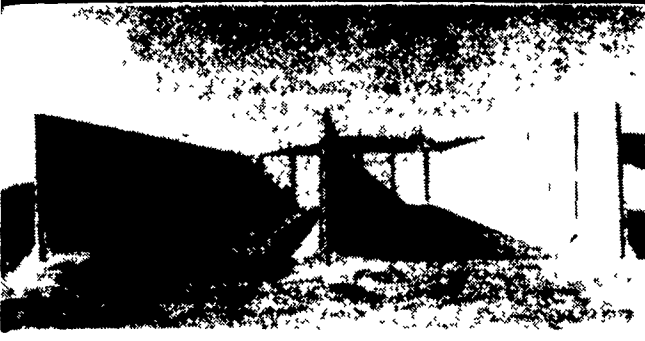


Solid Ways To Improve Your Farm

Consider The Many Advantages Of Concrete



PRE-CAST BUNKER SILOS-
"THE ECONOMICAL CHOICE"
STORAGE FOR ANY FORAGE
 Also Suitable For Grain Storage,
 And Practically Any Other Bulk
 Material.

- Outside Walls
- Center Walls
- Can Be Moved, Or Added To Later.
- 8'6" high
- 5'2" Wide
- 5000 P.S.I. Steel Reinforced Concrete
- Adaptable To Headgates Or Self-Feeders.
- Very Strong
- Can Be Used For Retaining Walls.
- Many Industrial Bulk Storage Uses.



"MANURE STORAGE SYSTEMS"

- Manure Storage Systems For The Small Herd - or The 400 Cow Herds And Larger.
- Systems Adaptable To Any Type Equipment
- SCS Approved

- Circular Tanks Poured-In-Place Above Ground - In Ground - Or Uneven Backfill.

- Pre-Cast Concrete panels Delivered And Set On Your Prepared Site.

The Sollenberger Pre-Cast Bunker Silo Panel Is Designed To Be Free-Standing. With The Tongue and Groove Edges, It Can Be Coated With Mastic & Bolted Together To Give An Air-Tight Smooth Wall That's Easy To Pack And "Keeps Feed Good." Delivered And Set On Your Prepared Gravel Base.

CONVENTIONAL SILOS



Since forage quality is so important to today's dairy farmers, it is very important to consider factors that might improve that quality.

Many farmers are finding that an upright silo is a good investment because of increased feed value of haylage. Samples of wilted hay from University forage analysis programs are running 3.5-4 percentage points higher in crude protein than the average hay sample.

There is no better upright silo than a poured Sollenberger Silo! The strong, smooth walls reflect heat so that your forage protein doesn't suffer from heat damage.

You will appreciate the quality of a Sollenberger Silo, and "your cows will just love you" because of the high quality feed.

A Sollenberger Silo keeps feed good, and unloads easily, at the 50%-58% moisture level.

- Solid 6" Poured Concrete Walls
- Horizontal and Vertical Reinforcing Steel (Exceeds ISA Standards)
- Concrete Chute - Poured with wall
- Redwood Doors - Large 24" x 32"
- Fill Pipe
- Outside Galvanized Ladder With Safety Cage
- Many Extras To Reduce Maintenance Costs For Many Years.

Top Unloading
 16'x72'
 Leon VanLieshout
 Albion, NY

"BOTTOM UNLOADING" FORAGE & GRAIN SILOS

- Laidig 43-For High Moisture Shelled Corn - High Moisture Ground Ear Corn - And Other Grains
- Laidig 98 - For Grains And Forages
- Laidig 198 - For Those Big Silos And Tough Unloading Jobs.
- ✓ Smooth 6" Poured Concrete Walls
- ✓ Sure-Seal Filling System Opens And Closes From The Ground -
- ✓ Safety Rail Around The Poured Concrete Roof.
- ✓ Enclosed Gooseneck
- ✓ Many Other Features



24'x75' 20'x80'
 Groland Farm - The Groves
 Shippensburg, PA

Don't Delay Too Long!
 Our Schedule For 1987 Is
 Rapidly Filling Up.

INDUSTRIAL SILOS

Common Uses:
 Wood Chips • Sawdust • Bark
 • Sand & Aggregates • Coal
 • Grains • Meals • Plastic
 • Water & Liquids • Any Flowable Materials

- Advantages:**
- Designed according to your specific needs by registered, professional engineers
 - Lower construction cost
 - Standard 6" steel-reinforced, poured concrete walls
 - Smooth, leak proof walls
 - Maintenance free
 - Concrete wall reduces product freezing in winter and heating in summer
 - Lower fire insurance costs



PRE-CAST CONCRETE FEED BUNKS

You Spend A Lot Of Time And Money Producing And Storing Your Good Feed Crops. Don't Just "Get By" With A Feeding Bunk That Wastes Feed Or Is About Worn Out. Your Best Choice For A Feed Bunk Is Pre-Cast Concrete.



SLANT BACK J BUNK

H-BUNK

Let Us Know Your Needs. We Can Deliver From Our Large Inventory And Set On Your Prepared Site. OR: We Can Load On Your Truck To Help Save On Freight Costs. We Have Several Sizes And Styles To Choose From, Plus Metal Posts, For Cable, Which Can Be Bolted To The Bunk To Keep Cattle Out.



Sollenberger Silos Corp.

A Nitterhouse Company
 Box N Chambersburg, PA 17201 [717] 264-9588

SINCE BEFORE 1910

Sollenberger Silos Corp.
 Box N, Chambersburg, PA 17201

Name _____
 Address _____
 City/State _____
 Zip _____ Phone _____
 Best Time To Call _____

Please send information on:

- 1. Bottom Unloading Concrete Silos
- 2. Top Unloading Concrete Silos
- 3. Upright Bunker Silos
- 4. Manure Pits
- 5. Feed Bunk
- 6. Cattleguards
- 7. Hog Slats
- 8. Industrial Silos/Tanks

For Silos
 Call
 Bob Francis
 717-532-6848 - Evenings -

For Manure Systems &
 Pre-Cast Products
 Call Mike Hair
 717-263-0792