

**EXCELLENT IH 1440 COMBINE**  
 Later model, low hours, priced right.  
**M & R EQUIPMENT INC.**  
 New Park, PA  
 717-993-2511

**IH TRACTOR SALVAGE PARTS**  
 Savings to 50% & More  
**BATES CORPORATION**  
 14th AND FIR RD., BOURBON, IN 46504  
**PARTS DISMANTLED CLEANED & READY FOR SHIPMENT**  
**WE SHIP UPS, TRUCK, BUS**  
 FOR THOSE HARD-TO-FIND & DISCONTINUED ITEMS  
 Call the Parts Specialists: 219-342-2955

**TORQUE AMPLIFIERS, ETC.**  
 Serving Customers Coast to Coast.  
 Complete TA assemblies for 706 1586 are priced at \$595 and come with a Dana Co Heavy Duty Sprag instead of the usual IH sprag. The Dana sprag is guaranteed for 2 years against failure. Sprag kits (includes sprag gear Dana sprag and piston carrier) and all items for rebuilding your own TA are available to qualified persons. Ramps and carriers for the older style TA's (as in SMTA, 340 560) are priced at \$150 each and carry a 90 day guarantee. We have all the parts needed to rebuild your TA in stock at prices that will save you money. We also have a shop available for complete TA installation. Or, you may split your own tractor and bring the center housing to us, which we can rebuild while you wait (approx 4-6 hrs). We also stock New and Rebuilt Water Pumps, Dynlife Clutches Pressure Plates and PTO Drive Gears (Spline fit into pressure plates) for most IH tractors and combines.

We are in need of TA & clutch cores for rebuilding purposes. If you have not returned your cores, please do so or call us for pickup.  
 Dealers: We are paying cash for cores. If you have quantity, we will pick up.

Dealer Discounts Available



**LEAMAN TRACTOR PARTS**

Box 250  
 Willow Street, PA 17584  
 717-464-2874

**USED COMBINES**

1984 MF 850 Hydro with 9115 Floating 15 Ft. Grain Head and 1163 Corn Head	\$58,000
1982 MF 850 Gear Drive	\$29,000
1981 MF 850 Hydro	\$34,000
1980 MF 550 Hydro	\$15,000
1980 MF 750 Gear Drive	\$24,000
1979 MF 550 Hydro	\$18,000
1978 MF 760 Hydro	\$17,000
1978 MF 760 Hydro	\$15,000
1978 MF 750 Hydro	\$16,000
1977 MF 760 Hydro	\$18,000
1977 MF 760 Hydro	\$19,000
1977 Gleaner "M"	\$16,000
1976 MF 760 Hydro	\$15,000
1976 MF 760 Hydro	\$16,000
1975 MF 750 Gear Drive	\$12,000
1975 MF 750 Hydro	\$14,000
1974 MF 760 Hydro	\$12,000
1974 MF 750 Hydro	\$8,500
1972 MF 510 Gear Drive	\$6,500
1969 MF 300 Gas	\$4,000
1969 MF 300 Gas	\$2,700
1969 MF 410 Diesel	\$5,000
1966 MF 510 Diesel	\$2,500
1969 John Deere 6600	\$4,500
1975 IH 615 Hydro	\$4,500
Like New 1144 Corn Head	\$5,500
1163 Corn Head	\$5,900
JD 215 Flex Head	\$4,800

**USED EQUIPMENT**

Tye 10 Ft. No-Till Grain Drill	\$9,000
MF 724 260 Bu. Manure Spreader	\$6,100
Glenco 12 Ft. Transport Disc	\$6,200
Glenco 9 Tooth Soil Saver	\$5,900
Glenco 7 Tooth Soil Saver	\$4,900
MF 351 1 1/2 ft. Soil Finisher	\$6,100
Landoll 10 ft. Soil Finisher	\$3,200
Danuser Post Drive	\$1,650
Danuser Post Hole Digger	\$640
Danuser Wood Splitter	\$780
MF 880 Hyd. Reset 6-16 Plow	\$4,650
MF 345 Spring Reset 3-16 Plow	\$2,500
MF 82 Spring Trip Plow	\$1,200
MF 41 3 pt. Sickle Bar Mower	\$2,400
MF 925 Haybine	\$1,500
EZ Trail 6 Ton Running Gear	\$550
EZ 475 Bu. Self Unloading Grain Cart	\$6,400
Demo Myer 8' Snow Blade To Fit Farm Tractor	
MF 66 Spring Trip Plow	\$450
MF 820 Hyd. 19 ft. Wing Disc	\$8,500
MF 233 10 ft. Disc Harrow	\$4,100
NH 479 Haybine	\$1,200
MF 124 Baler	\$3,200
MF 120 Baler	\$1,200
MF 124 Baler	\$1,500
MF 260 Harvester w/2 Row Corn Head	\$2,500
New Perkins 354 Turbo Engine Will Fit Ford L700 Truck	\$3,700

**DEMO & RENTAL TRACTORS**

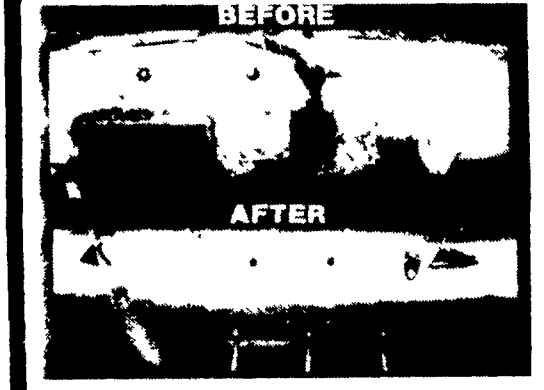
MF 67 <del>SOLD</del> P.	\$19,700
MF 290, 65 HP.	\$14,800
MF 270, 55 HP.	\$13,900
MF 25 <del>SOLD</del> P.	\$10,800
MF 10 <del>SOLD</del> D, 32 HP.	\$9,800
MF 10 <del>SOLD</del> H.P.	\$5,400
MF 1010, 16 HP.	\$4,900

**USED TRACTORS**

MF 1155 w/cab	\$8,700
MF 1080	\$5,500
MF 250	\$8,500

**We Are Offering The Following Machines At A Low Rate Of 4.9% Finance Charge AND No Finance Charge Until 9/1/87 OR A Cash Discount**  
 1980 Uni System, Only 1200 Hrs.

801 4 Wheel Drive Unit	\$26,000
818 Grain Combine	\$6,000
840 Feeder House	\$2,000
844N 4 Row 30" Corn Head	\$4,500
767 Harvester	\$3,300
774 4 Row 30" Harvester Head	\$2,900
766 Hay Pick Up	\$1,000
	<b>\$45,700</b>
1980 760 Combine	\$37,000
1984 850 Combine	\$34,000
1979 550 Combine	\$18,000



**SCHMIDT "HEAVY DUTY REBUILT TABLE AUGER"**  
 Get Your Table Auger Repaired For Your Combine. Replace Complete Section. Same As New. All Makes And Models. Why Buy New, Get Your Auger Repaired SAVE!!!  
 Call Now For Appointment And Price Quotation To Have Your Auger Repaired

**MF Massey Ferguson**  
**M.M. WEAVER & SONS, INC.**  
 Leola, PA 17540 (717) 656-2321  
 Located: 4 miles West of New Holland on Route 23, 1 1/2 miles Northeast of Leola on the North Groffdale Road, 1 mile on the right, opposite Groffdale Mennonite Church.

**WE'VE MOVED!**  
 Now Open At Our **NEW LOCATION**  
 School Road - 1/2 Mile West Off Route 501 In Bethel, Pa.  
 ★ Watch For "Grand Opening" Coming Soon!

<b>TRACTORS</b>	<b>HARVESTING EQUIPMENT</b>	<b>HAY EQUIPMENT</b>
<ul style="list-style-type: none"> <li>Case 430</li> <li>Case 1030</li> <li>Case 1070</li> <li>White 2-105 Tractor</li> <li>David Brown 990 w/Loader</li> <li>David Brown 1200</li> <li>Ford Jubilee</li> <li>Farmall H w/Loader</li> <li>AC 5050 w/Loader</li> </ul>	<ul style="list-style-type: none"> <li>Hesston 2000-100 Harvester</li> <li>Hesston 2000-150 Harvester</li> <li>NI Unisystem, 702 Diesel, 710 Combine &amp; 760 Harvester</li> <li>NI 709 Uni-System</li> <li>NI 315 Sheller</li> <li>NI 737 Husking Bed</li> <li>NI 838 Husking Bed</li> <li>NI 767 Super Chopper</li> <li>NI 323 1-Row Corn-picker</li> <li>NI 325 12 Row Husking Bed</li> <li>NH 717 Harvester</li> <li>Gehl 800 Harvester</li> <li>Gehl 1200 Harvester w/pickup and 2-row cornhead</li> </ul>	<ul style="list-style-type: none"> <li>IH 1190 Windrower</li> <li>NH 469 Windrower</li> <li>NH 479 Windrower</li> <li>Hesston PT 10</li> <li>Hesston 1010 Windrower</li> <li>2 Bale Thrower Wagons</li> <li>Case Hay Rake</li> <li>NI 456 Round Baler</li> <li>NI 484 Round Baler</li> </ul>
<b>LOADERS</b>	<b>TILLAGE</b>	<b>MISCELLANEOUS</b>
<ul style="list-style-type: none"> <li>Case 580B Loader</li> <li>Case 1816B Skid Loader</li> <li>Case 1845 Diesel</li> <li>Case 1737 Loader</li> <li>Case 450 Crawler Dozer</li> </ul>	<ul style="list-style-type: none"> <li>IH 3-16 Plow, Auto. Reset</li> <li>IH 370 Disc, 10 Ft.</li> <li>Int. 2-Bot. Trailer Plow</li> <li>Case Disc Harrow, 10'</li> <li>Case Field Cultivator</li> <li>Oliver 22' Disk</li> <li>Oliver Disk</li> <li>Used Cultipacker</li> <li>15 Ft. Cultimulcher</li> </ul>	<ul style="list-style-type: none"> <li>Martin Equalizer</li> <li>King Wise 32' Elevator</li> <li>Smoker 24 Ft. Elevator</li> <li>Gehl 99 Blower</li> <li>IH 56 Blower</li> <li>Int. 56 4-Row Planter</li> <li>MF 33 Grain Drill</li> <li>IH No. 10 13-Disc Drill</li> <li>4-Row Cole Corn Planter</li> <li>6 Used Spreaders</li> <li>Scavenger 1263 Manure Spreader</li> <li>Scavenger 1678 Manure Spreader</li> <li>NI 218 Spreader</li> <li>NI 224 Spreader</li> <li>IH 595 Spreader</li> <li>NH 679 Spreader</li> <li>Weaverline Cart, 24 Bushel</li> <li>Weaverline Cart, 30 Bushel</li> <li>Century 500 Gal. Sprayer</li> </ul>
<b>HESSTON FARM EQUIPMENT</b>	<b>Case</b>	<b>NEW IDEA</b>
	<b>NEW SPECIAL NEW IDEA 404 WHEEL RAKE \$1,250</b>	<b>Heavy Duty Tubular MARTIN'S GATES 20% OFF</b>
<b>ZIMMERMAN'S FARM SERVICE</b> 1/2 Mile West Off Rt. 501 On School Road, Bethel, PA. Phone 717-933-4114		

**3 SILOS AND UNLOADERS**

**WARNING, ALL SILO OWNERS**  
 Check Your Silo For Bad Staves or Rotted Concrete From Corn Juice. Also Check Plaster, Unloader Cables, Unloaders, Etc.  
 If You Have A Problem - Don't Fill It - Get It Fixed, Or Check Your Insurance Policy.  
 A Silo Is A Building That Needs Maintenance To Stay There  
 This Public Service Message Courtesy Of:  
**Lancaster Silo Co., Inc.**  
 2008 Horseshoe Road  
 Lancaster, Pa. 17601  
 717/299-3721