

# THE OLD FARMER'S ALMANAC

MAY 4-10, 1987

Be wary, temperatures vary.

First quarter of the moon May 5 (Tues.) John T. Scopes was arrested May 5, 1925 for teaching the theory of evolution. The Hindenburg exploded and burned at Lakehurst, N.J., May 6, 1937. Average length of days for the week, 14 hours 18 minutes. America's first transcontinental railway was completed May 10, 1869. Mother's Day May 10. *An hour in the morning is worth two in the evening.*



**Ask the Old Farmer:** Can you tell me if the Flea Market is so popular here in Connecticut was a New England innovation? Where and how did it start? E. V. Darien Conn. *It started in France -- in places selling second-hand clothing!*

**Home Hints:** Basil is said to ward off mosquitoes and flies. Try growing some around your patio.

## OLD FARMER'S WEATHER FORECAST

**New England:** Week begins clear and warm midweek showers, end of week clear skies and very warm temperatures.  
**Greater New York-New Jersey:** Beginning of week clear and unseasonably warm mid through end of week partly cloudy and very warm.  
**Middle Atlantic Coastal:** Beginning of week clear with unseasonably warm temperatures, cool temperatures with heavy thunderstorms light east mid through end of week.

(All Rights Reserved Yankee Publishing Incorporated Dublin, NH 03444)

### Penns Valley Livestock

Centre Hall, Pa. Tuesday, April 28

Report supplied by Auction

Beef Cows: Utility and Commercial 46.00-51.50; Cutters 42.00-45.50; Canners 39.00-41.00; Shells 35.50.

Heifers: Standard 50.00-54.00; Commercial 44.00-46.50.

Steers: Choice 61.50-63.00; Good 55.00-59.50; Standard 51.00-55.00.

Bulls: Good 55.00-59.50; Standard 51.00-54.00.

Feeder Cattle: 300-500 lbs. large frame 55.00-70.00; 300-500 lbs. small frame 49.00-62.00; 500-700 lbs. large frame 51.00-64.00; 500-700 lbs. small frame 50.00-61.00.

Veal Calves: Choice 88.00-95.00; Good 75.00-86.00; Standard 65.00-71.00; Utility 56.00-64.00.

Farm Calves: Bulls 95.00-118.00; Heifers 100.00-134.00.

Hogs: 51.00-52.50.

Sows: 43.75-46.00.

Boars: 36.00-38.50.

Shoats 25-30 lbs. per head 29.00-40.00; 30-35 lbs. per head 35.00-48.00; 35-50 lbs. per head 50.00-60.00.

Lambs: 55.00-59.00.

Sheep: 12.00-19.00.

Goats per head: 10.00-18.00.

### Valley Livestock

Athens, Pa.

Monday, Apr. 27, 1987

Report supplied by auction

Holstein Hfr. Calves 85.00-160.00.

Veal Calves 65.00-79.00.

Vealer Bull Calves 80.00-116.00.

Slaughter Calves 50.00-62.00.

Grassers & Feeders 40.00-60.00.

Lambs 50.00-97.00.

Sheep 15.00-31.00.

Hogs, 200 to 250 47.00-51.50.

Sows 39.00-42.00.

Boars 30.00-34.50.

Pigs, each 20.00-39.00.

Heifers 42.00-48.75.

Steers 45.00-54.50.

Steers, feeder 48.00-65.00.

Bulls 47.00-56.75.

Cows, utility 44.00-49.25.

Cows, fat 42.00-45.00.

Cows, medium 37.00-40.00.

Cows, poor or small 30.00-37.00.

Cattle Market very active.

Calf Market steady.

Ponies each to 87.50.

Goats each 15.00-36.00.

Remarks: Demand real good for heifer calves.

Feeder Sale 1st Monday of Each Month.

Dairy Sale 3rd Thursday of Each Month.

### Farmers Livestock Auction

Duncansville, Pa.

Mon., Apr. 27, 1987

Report supplied by auction

CATTLE 287. STEERS: H.

Choice & Prime 66.25-68.50; Choice

63.50-65.75; Good 57.50-62.75;

Standard 45.00-56.50.

HEIFERS: Choice 63.50-65.25;

Good 49.00-60.75.

COWS: Utility & Commercial

46.00-50.25; Cutters 44.00-47.75;

Canner & Low Cutter 39.25-43.75.

BULLOCKS: Good & Choice

57.00-60.25.

BULLS: Yield Grade No. 1 52.00-

57.25.

FEEDER CATTLE: Steers

Good 62.00-75.00, Standard 52.50-

61.50; Bulls Good 60.00-68.50,

Standard 48.50-59.50. Heifers Good

60.00-67.50, Standard 55.00-58.50.

CALVES 325. Prime 92.50-104.00;

Choice 82.00-91.00; Good 68.50-

81.50; Standard & Good 58.50-67.50;

90-110 lbs. 60.00-72.50; 65-90 lbs.

50.00-64.50; Holstein Bulls 90-130

lbs. 82.50-124.50; Holstein Heifers

90-130 lbs. 84.00-122.50.

HOGS 174. US No. 1-2 53.00-54.25;

US No. 1-3 52.00-53.25.

SOWS: US No. 1-3 41.00-44.75.

Boars 36.00-41.50.

FEEDER PIGS 18. US No. 1-3 20-

35 lbs. 30.00-41.00 per head; No. 1-3

35-50 lbs. 42.00-53.00 per head.

SHEEP 38. Choice 92.00-95.50;

Good 80.00-84.50; Sl. Ewes 10.00-

29.50; 20 Goats 10.00-34.50 per head.

HAY 16 Loads 60.00-155.00 per

ton.

### Grantsville Livestock

Grantsville, Maryland

Saturday, Apr. 25, 1987

Large: 33-50; Medium: 30-38.

HOGS: Top Barrows & Gilts

52.00-53.00; Heavy Butcher 51.50-

53.00; Light Butcher 42.00-52.50;

Butcher Sows 40.00-45.00; Feeder

Shoats 30.00-48.50.

VEAL: Good 75.00-92.00;

Standard 65.00-74.00; Utility 48.00-

59.00; Bull 70.00-112.00.

SHEEP & LAMBS: Good 85.00-

92.00; Utility 75.00-80.00; Culls

58.00-62.00; Slaughter Ewes 20.00-

28.00.

SLAUGHTER CATTLE: Steers:

Good 60.50-66.50; Standard 55.00-

58.50; Utility 48.00-52.00.

HEIFERS: Good 59.00-63.85;

Standard 50.00-58.00; Utility 40.00-

48.00.

COWS: Commercial 42.00-47.00;

Utility 38.00-40.00; Canner & Cutter

32.00-35.00.

BULLS: Commercial & Good

49.00-54.50; Cutter & Utility 42.00-

47.00.

STOCK-FEEDER CATTLE:

Yearling Steers: Good 62.00-68.50;

Medium 55.00-60.00; Inferior &

Common 45.00-52.00.

STEER CALVES: Good 75.00-

86.00; Medium 58.00-70.00; Inferior

& Common 48.00-54.00.

HEIFER CALVES: Good 65.00-

74.00; Medium 52.00-58.00; Inferior

& Common 40.00-48.00.

### Frederick Livestock

Monday, Apr. 27, 1987

BUTCHER COWS: Very active,

2.00 higher. Good 45.00-50.00;

Standard & Utility 39.00-44.00;

Canners 33.00-38.00; Shelly 33.00

down.

BULLS: Good 52.00-55.00;

Medium 48.00-51.00; Steers Good

57.00-60.00; Heifers: Good 49.00-

53.00; Medium 45.00-48.00.

BUTCHER HOGS: 2.00 higher.

220-240 lbs. 52.00-52.75; 250-275 lbs.

47.00-51.50.

SOWS: 500-600 lbs. 44.00-46.25;

300-450 lbs. 42.00-44.00.

VEAL CALVES: Mostly steady

prices. Good-Choice 75.00-88.00;

Standard 65.00-74.00; Stocky &

Thin 55.00-64.00; Light Calves

53.00-58.00; Weak & Rough 52.00

down.

CALVES RETURNING TO

FARM: 3.00 higher, few beef cross

bulls 100.00-132.00.

HOLSTEIN HEIFERS: 90-120

lbs. 80.00-108.00.

HOLSTEIN BULLS: 85-95 lbs.

80.00-90.00; 100-115 lbs. 90.00-111.00.

STOCK CATTLE: Good run 2.00

under last week. Steers choice

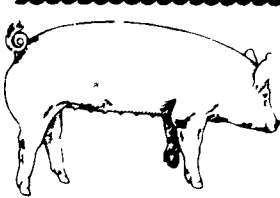
72.00-79.00; Good 64.00-71.00;

Medium 56.00-63.00. Heifers Choice

63.00-70.00; Good 55.00-62.00;

Medium 48.00-54.00; Bulls Choice

70.00-81.00; Good 60.00-69.00;



**EMERY'S BUYING STATION**

### OPEN TO RECEIVE YOUR MARKET HOGS

AT THE GREEN DRAGON MARKET  
 RD 4, EPHRATA, PA 17522  
 1 MILE NORTH OF EPHRATA  
 ON NORTH STATE STREET.

HOURS: MONDAY, TUESDAY, and  
 WEDNESDAY 7:00 A.M. to 11:30 A.M.

215-458-5677 Residence  
 717-733-9648 Office

215-458-5677 Residence  
 717-733-9648 Office

### YOU ARE PAID FOR YOUR HOGS IMMEDIATELY

Ken & Lois Emery, Proprietors

### Green Dragon Livestock Sales

Location: Ephrata RD 4. 1 mile N. on North State St., Ephrata.

### COWS COWS COWS SALE EVERY FRIDAY

Lots of good Northern Feeder & Stockers Slaughter Cows - Bull Steer, Veal-lamb

11:00 A.M.-Beef Sale 200-300 each week.  
 1:00 P.M.-Dairy Sale.  
 7:00 P.M.-Small Animal Sale.

For Special Sales and Herd Dispersals on farm or at our barn or other market information call: Office 717-733-2444, Home 717-838-4318.

**WALTER H. RISSER, Proprietor**

All out of state and new buyers must have cash or certified check or current letter of credit from bank.

Medium 52.00-59.00.

OPEN DAIRY HEIFERS: 50.00-

68.00.

PIGS & SHOATS: Steady prices.

By the head 20-30 lbs. 19.00-39.00;

40-60 lbs. 40.00-54.00.

### New Holland Sales Stables

New Holland Dairy

Wednesday, April 29, 1987

Report supplied by auction

Reported receipts of 75 cows, 39 heifers, and 2 bulls. Market stronger.

Load of PA fresh cows, 1100.00-

1175.00.

Load of PA fresh cows, 670.00-

1035.00.

Load of Canada fresh cows,

620.00-1460.00, springers 620.00-

1310.00.

Load of Canada fresh cows,

510.00-1170.00, springers 640.00-

1100.00.

Locally consigned cows 490.00-

935.00.

Springing heifers 470.00-850.00.

Purebred 925.00-1085.00.

Bulls 450.00-690.00.

### St. Louis Cattle, Hogs

Tuesday, April 28, 1987

CATTLE AND CALVES 100

TRADING ACTIVE ON LIGHT RECEIPTS

SLAUGHTER COWS FULLY STEADY TO 100

HIGHER SLAUGHTER BULLS FULLY STEADY

COWS BREAKING UTILITY 2 4 41 00-44 00

CUTTER AND BONING UTILITY 1 2 43 00-45 00

HIGH-YIELDING CUTTER AND BONING 1 2

45 00-46 00 FEW 47 00 CANNER AND LOW

CUTTER 1-2 38 00-41 00 SHE