

Public Auction Register

WED. MAY 6 - 4PM Antiques, HH, Tools, Train, Coins. 626 S. State St., Ephrata, PA. Terms by: Martha J. Andes, T. Glenn & Timothy G. Horst, Aucts.

WED. MAY 6 - 7PM Feeder Cattle. Four States' Livestock Sales, Hagerstown, MD.

THURS. MAY 7 - 1PM 2

Berks County Farms. Along Rt. 183 between and Bernville and Strausstown, Jefferson Twp., Berks Co., PA. Traveling on Rt. 1-78 between Allentown and Harrisburg turn off Exit 7 onto Rt. 183. For: Margaret A. Moser Schell, Dennis F. Wagner, Auct.

Guns & Gun Case, Tractor, Car, Boat & Equip., Tools. Fisherville Fire Co. Building in Fisherville, PA. Take Rt. 225 N. of Halifax approx. 4 mi., or Rt. 225 S. of Elizabethville approx. 5 mi. to sale. Lee Leitzel Estate and Mrs. Daniel Kinsinger, Edwin Shoop & David D. Deibler, Aucts.

Allegheny-Steuben Holstein Club. Kevin O'Brien, Sale Chairman. Gordon Wood Sale Mgr.

FRI. MAY 8 - 10AM D.S.T. Approx. 600-800 Hd. All Kinds of Heifers. Shady Lane Dairy Sales, Inc., Quarryville, PA. Glenn & David Fite, Owners.

FRI. MAY 8 - 10AM Farm Machinery, Tools, Bee Hives Colonies. For: Jackie Scholler, 813 Bridge Rd., Rt. 113 bet. Creamery & Rahns, Collegeville, PA. Sanford A. Alderfer, Inc.

FRI. MAY 8 - 11AM Farm Machinery, Dairy Eq.

Tikvah Farm, Columbia County Rt. 27A, 1 mi. N. of County Rt. 7, 4 mis. W. of Rt. 22, Copake, NY. D. Luther, Auct.

FRI. MAY 8 - 1PM Special Feeder Cattle Sale at Baltimore Livestock Market, Rts. 40 & 32, West Friendship, MD.

FRI. MAY 8 - 1:30PM State Graded Feeder Pig Sale. Grading 7:30 until 11:30AM. Carlisle Livestock Market, Inc., Exit 12 off I-81. 717-249-4511.

FRI. MAY 8 - 2PM Real Estate Red Lion, PA.

Chanceford Twp. Take Chapel Church Rd. off the Craley-New Bridgeville Rd. and come approx. 1/2 mi. to farm along Chapel Church Rd. Edna B. Reichard Estate. Jacob A. & Brain L. Gilbert, Aucts.

FRI. MAY 8 - 5PM Consignment Auction of New & Used Farm Eq. & Industrial Eq. to be held in our yard on the corners of Rt. 38 & 38B, Newark Valley, NY, 19 mi. W. of Binghamton, 7 mis. N. of Owego. Goodrich Auct. Service.

FRI. MAY 8 - 7PM All Registered Holstein, 40 Cows, 4 Bred Heifers, 7 Calves, DHIA, Enjoyment Farms. 814-926-3669.

FRI. MAY 8 - 7PM 12E Dairy Cattle at Art Kling's Perry Co., on Rt. 74, 1E mis. N. of Carlisle, 2 1/2 mis. NE of Landisburg PA. Bill McCulloch Farm Owner. Kling's Auct. Serv

SAT. MAY 9 - 9AM Real Estate, Personal Property of the late Ward Klinefelter and Mrs. Gladys Klinefelter of Loganton, RD, approx. 1 1/2 mis. W. of Tylersville, PA, Clinton Co. Earl Weaver, Auct.

SAT. MAY 9 - 9AM Farm Tractors, Power & Hand Tools, Antiques, HH. Along Clay St., Mountville, PA, West Hempfield Twp., Lanc. Co., PA. By: Mrs. George F. Hohenwarter. Howard Shaub, Auct.

FARMERSVILLE AUCTION

TUESDAY, MAY 5, 1987
12:00 Noon

In Farmersville, 3 mi. east of Brownstown, Lanc. Co., Pa.

From 12:00 noon to 3:00 P.M. We will be selling groceries. At 3:00 P.M. we will be starting a regular sale as usual.

WE SELL ON COMMISSION

Call **JOHN J. RUTT**
(717) 354-5095

Commission Rates

Any item over \$100 - 10%

Any item under \$100 - 15%

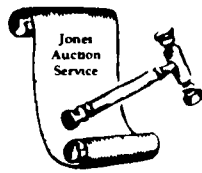
Pay out night of sale.

No Buyers Premium!

Consignments being accepted for our Memorial Day Antique Sale.

Auctioneer: Larry E. Rutt

AU-2455-L



Public Auction

Snyder County Farmette
Sat., May 23, 1987

Located 4 mile southwest of Port Trevorton, Pa. Union Twp. 3 acres more or less with 4 bedrm. 2 1/2 story frame dwelling plus numerous out buildings. Located in Mennonite neighborhood close to schools and church. Terms: 10% down bal. in 30 days.

For more details call 717-837-3850

Personal Property Cash

Owner

MRS. PETER J. (Mary Alice) WATTS

Mark J. Jones Auctioneering Service

Ph. 717-286-0052 Lic. #AU1595-L

PUBLIC SALE

Of Antiques, Oak Furniture, H.H. Goods, Glassware, Tin Toys & 56 Buick Special 4 D 77,000 Miles.

SATURDAY, MAY 9, 1987

9:00 A.M.

Located at Chestnut St., Bainbridge, Pa. Route 441 Between Marietta & Middletown.

Collected items. Toys sold at 11:00 & car 12:00. No out of state checks.

Sale By

ALAN A. BRUCKART

Harold (Abe) Shaffner Auct.

829-L

653-5689

Food Stand

Martin's 16th Annual SPRING AUCTION

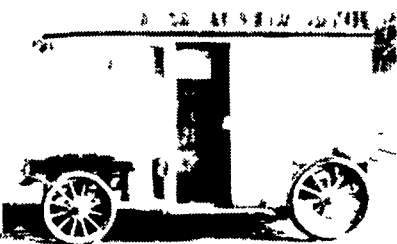
of CARRIAGES, SLEIGHS & ANTIQUES

WEDNESDAY, THURSDAY, FRIDAY & SATURDAY

MAY 13, 14, 15 & 16, 1987

Located at Martins Sales Pavilion, Two Miles East of Intercourse, on Route 340. Lancaster County, Pennsylvania.

Starting at 7:00 PM on Wednesday, this gigantic event will include 5000 to 6000 items during the 3 1/2 days including many more articles of interest than can be listed in this ad. The perfect opportunity to acquire rare collectibles for interior decorating, store & restaurant displays, private collections, gifts & many other unique purposes. The amount & quality must be seen to be appreciated. Plan now to attend & be prepared to return home with more articles than originally intended to buy.



Milk Delivery Wagon

Antiques include: shoe shine stand with seating for three persons & a marble step; Cretor's table top popcorn machine; very old appliqued "Sword & Shield" quilt; restored player piano by Becker Bros. of N.Y.; spinning wheels; oak antique furniture; refinished Victorian settee & matching chair; roll top desk & chair; general store collectibles; advertising prints; paper mache, fisherman adv. for Scotts Emulsion; children's toys; etc.

Carriage & wagon parts including wheels, poles, shafts, seats, etc; prim. & blacksmith tools; wagon jacks; tie weights; sev. water cooled, gas engines; runing gears; sev. old wooden broom makers; h.d. farm machinery; dog treadmill & the list goes on and on.



Harness Makers Horse



Omnibus

Also, new livery apparel & English riding boots; new saddles, bridles & parts; new sets of harness & harness parts; used harness in good cond.; carriage lamps; appointments including wicker; holly whips; rosettes; horse & pony blankets; antique silver spurs; collars & harnes; E & J Co. railroad tail lamps; strings of bells; harness makers bench; horse hide rug; carriage makers axle dye set; branding irons; carriage wrenches (some adjustable); medicine b/t; asst. bits; prints & pictures. Also harness makers horse; perambulators; miniature sleighs & wagons; wooden carousel giraffe; carousel horses & flat bed, utility trailer.

Items of special interest:

Two ladies, black Hudson seal, full length coats; ladies racoon coat, full length; two mens racoon coats w/half lining & pocket opening for access to trousers pockets; small hurdy-gurdy; signed bronze statue on top of marble clock; two silver mounted parade outfits; John Wayne American painted bronze sculpture.

Approx. 300 horse drawn carriages, coaches & sleighs including: Restored park drag; Landaulet by Brewster & Co.; restored Stanhope Phaeton by Brewster & Co.; restored Brewster brougham; park break; chaise; curtain rockaway possibly made by Brewster & Co.; restored Yellowstone Park coach; Abbott & Downing stage coach (repro); Brewster coupe brougham; new vis-a-vis; depot wagon by w. Rogers of Phila; commercial wagonette; panel boot Victoria from Mus. of Trans., Boston; Irish tub cart; ice wagon; hunting & sporting vehicles; pleasure carts & 4-wheel conveyances; other commercial wagons; 2, 4 & 6 pass. surreys & sleighs; farm wagons; to name a few of the many fine, restored & orig. cond. vehicles consigned to this spectacular event.



Three Seat Democrat

TERMS: CASH, CERTIFIED CHECKS OR TRAVELERS CHECKS. Personal or business checks will be accepted only with a CURRENT bank letter of GUARANTEED PAYMENT, payable to Martin Auctioneers, Inc. The letter must be presented when registering for a buyer's number. All purchases must be paid by the end of each auction day before merchandise will be released.

Please Contact Our Office For Additional Information



Martin Auctioneers, Inc.

P.O. BOX 477
INTERCOURSE, PA 17534

Larry L. and Paul Z. Martin, Jr.
717/768-8108
PA-AU-001137-L
CA-C-879