

New Wilmington Livestock Auction

New Wilmington, Pa.
Monday, April 20, 1987
 Report Supplied by PDA
CATTLE 298...PDA. Compared with last Monday's market: Slaughter cows .50 to \$1 higher. Choice sl. steers 62.75-65.75, one 67.25, Good 58.00-62.00, Standard 50.75-56.75. Few Choice sl. heifers 60-62.50, few low yielding 55.00-59.00, few Good 53.25-54.25, Standard 46.50-51.00. Breaking Utility & Commercial sl. cows 44.00-47.50, Cutter & Bon. Utility 41.00-46.00, Canner & Low Cutter 35.75-41.50, Shells down to 31.00. Few Yield Grade No. 1, 1255-1840 lbs. sl. bulls 53.00-55, few No. 2 1100-1895 lbs. 45.00-48.50. Feeder Cattle: Medium & Large Frame No. 1, 430-680 lbs. steers 59.50-66.50, 720-945 lbs. 51.00-61.50, Med. & Large #2, 345-675 lbs. 54.50-62.00, Large Frame No. 2 335-595 lbs. Holsteins 51.00-56.00. Medium & Large Frame No. 1, 300-500 lbs. heifers 58.00-69.50, 505-700 lbs. 51-60.00, Med. & Large #2, 425-655 lbs. 45.00-54.50.
CALVES 266... Two Prime vealers 104.00 & 106.00, few Choice 92.00-99, Good 76.00-87, Standard and Good 90-130 lbs. 60.00-67, 65-85 lbs. 50.00-60, Utility 50-60 lbs. 40.00-44.00. Farm Calves: Holstein Bulls 85-130 lbs. 86.00-130, few down 69.00. Hols. Heifers 90-125 lbs. 77.50-110.00. Beef Cross Bulls and Heifers 60-110 lbs. 60.00-100.00.
HOGS 403... Barrows and gilts about steady. US No. 1-2 230-255 lbs. barrows and gilts 49.50-50.10, 62 head 51.50, 1-3 220-260 lbs. 48.35-50, 2-3 220-285 lbs. 47-48.50, 1-3 205-215 lbs. 47.00-47.85. Sows fully steady. US No. 1-3 400-745 lbs. sows 40.00-47.00, 275-360 lbs. 30.00-39.50. Boars 36.75-40.50.
FEEDER PIGS 2... No Market Test.
SHEEP 52... Few Choice and

Prime 25-32 lbs. spring lambs 90.00-108, 45-65 lbs. 80.00-93, 80-100 lbs. 87.00-100.00. Slaughter ewes 12.00-28.00.
GOATS 21... Large 25.00-41, Medium 15.00-27.00, Kids 6.00-25.00 — all per head.

Eighty-Four Livestock Auction

Eighty-Four, Pa.
Monday, April 20, 1987
 Report Supplied by PDA
CATTLE 293...PDA. Compared with last Monday's market: Slaughter cows .50 to \$1 lower. Few Choice sl. steers 61.00-63.25, few Good 57-61.50, Standard 50.00-56.50, few Utility 47.00-48.75. Few Choice sl. heifers 59-60.00, few Good 52.00-57, few Standard 47.00-51.50, Utility 44.00-46.50. Breaking Utility & Commercial sl. cows 43.00-46.75, one 47.25, Cutter & Bon. Utility 40.00-44.00, Canner & Low Cutter 35-40.50, Shells down to 34.00. Two Choice sl. bullocks 58.00 & 62.00. Yield Grade No. 1, 1000-2130 lbs. sl. bulls 50-58.75, few No. 2, 900-1200 lbs. 46.00-49.00. Feeder Cattle: Medium & Large Frame No. 1, 300-420 lbs. steers 70.00-90.00, Large Frame No. 1 600-750 lbs. 60.00-63.00. Medium and Large Frame No. 1, 300-400 lbs. heifers 61.00-76.00.
CALVES 199... Few Choice vealers 91.00-105, few Good 81.00-92, Standard and Good 90-120 lbs. 54.00-65, 60-85 lbs. 46.00-56, few Utility 50-90 lbs. 35.00-42.00. Farm Calves: Holstein bulls 90-130 lbs. 70.00-107.50.
HOGS 114... Barrows and gilts .50 to \$1 higher. US No. 1-2 215-250 lbs. barrows and gilts 50.70-51.40, 1-3 220-245 lbs. 50.00-50.80, lot 2-3 225 lbs. 49.00, few 2-4 260-300 lbs. 45.00-48.50, lot 1-3 189 lbs. 43.75. US No. 1-3 300-600 lbs. sows 43-45.00, 2-3 350-650 lbs. 40-42.50. Few Boars 30.00-36.00.

FEEDER PIGS 0... No Market Test.

Test.

SHEEP 20... Few High Choice & Prime 45-75 lbs. spring sl. lambs 110.00-130.00. Few Choice 75-85 lbs. 95.00-100.00. Few Slaughter sheep 20.00-26.00.

GOATS 47... Large 30.00-40.00, Medium 20.00-32.00, few Kids 15.00-20.00 — all per head.

Slaughter Calves 55.00-65.00.
 Grassers & Feeders 40.00-52.00.
 Lambs 50.00-110.00.
 Sheep 18.00-29.00.
 Hogs, 200 to 250 47.00-51.00.
 Sows 37.00-43.00.
 Boars 33.00-35.00.
 Pigs, each 25.00-52.00.
 Heifers 41.00-49.75.
 Steers 44.00-54.50.
 Steers, feeder 50.00-60.00.
 Bulls 47.00-51.75.
 Cows, utility 44.00-49.00.
 Cows, fat 42.00-44.00.

Cows, medium 38.00-42.00.
 Cows, poor or small 28.00-37.00.
 Cattle Market steady.
 Calf Market higher.
 Horses each to 380.00.
 Ponies each to 40.00.
 Goats each 20.00-49.00.
 Hay 50.00 per ton.
 Remarks: Calf market is higher.
 Feeder Sale 1st Monday of Each Month.
 Dairy Sale 3rd Thursday of Each Month.

Valley Livestock

Athens, Pa.
Monday, Apr. 20, 1987
 Report supplied by auction
 Holstein Hfr. Calves 75.00-142.50.
 Veal Calves 65.00-95.00.
 Vealer Bull Calves 80.00-110.00.

F & S OF VIRGINIA HAY AUCTION
 NEW MARKET, VA

EVERY TUESDAY, AT 11:30 A.M.

Open to everyone to buy & sell.

Drought Stricken area in the heart of the Shenandoah Valley Horse Country, Dairy & Beef Cattle Country. 3% Commission will be charged to the sellers.

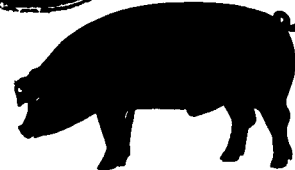
Auction will be conducted at the F & S Auto Auction, located on Rt. 11 North, 2 miles North of New Market, VA and 3 miles South of Mount Jackson, VA.

Our policy is cash, certified check or bank approved letter.

For more information call:
 703-740-8005 or 703-298-9187.



GWALTNEY of SMITHFIELD, LTD.



RECEIVING HOGS:

LANCASTER COUNTY FARMERS

MONDAYS: McCoy's Branch Office, Bareville
WEDNESDAYS: (Next to Bawells Butcher Shop)
& FRIDAYS: on Butler Rd. 717-656-9668

TUESDAYS: B & R Cattle
THURSDAYS: Marietta
 717-426-3258

YORK COUNTY FARMERS

MONDAYS: Stewartstown
 717-993-2564

TUESDAYS: Thomasville
 717-792-2248 or 9836

Contact for information:
 Ed Herrmann, 717-284-3203
 or Charlie Kauffman, 215-593-5674
 Future forward contracts available

IDEAL LEAF TOBACCO CO.

Joe Irving

I will continue to buy 609 Tobacco even though all the auctions are closed. I will be able to buy your entire crop of tobacco and pay top prices for your best grade. Thank you for your support.

Contact
Ideal Leaf Tobacco Company
 at
717-295-9346 or 717-299-3001

WANTED !!!

150 - 250 Farrow to Finish Swine Complexes to produce Breeding Stock

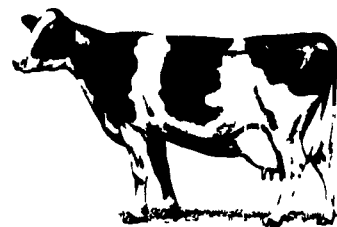
1. New facilities preferred
2. Independent or contract agreement
3. Would consider leasing new facility
4. Bonus paid on boars and gilts sold
5. If now in production- must depopulate
6. Prefer York, Adams, Franklin, Cumberland Lebanon, or Berks, PA counties and also Northern Maryland.

If you want to raise quality breeding stock and be rewarded for it - CALL

EAST COAST HOG SERVICE

35 N Cedar St. Lititz, PA 17543
717-626-6566
 (Monday thru Friday 8 AM to 5 PM)

Depend On FRESHSTART D & H Dry Cow & Heifer Feed To Make Your Dry Cows Pay



1. We Custom Blend Our Dry Cow Feed To Meet Your Needs.
2. FRESHSTART D & H Helps Avoid Metabolic Problems That Rob You Of Profits.
3. We Have Been Doing Dry Cow Nutrition Programs Since The 1940's. The Experience Pays Off For You.

Quality Products, Quality People



KEYSTONE MILLS
 —Serving Agriculture— Since 1894—

R.D. 3
 Ephrata, PA 17522
 (717) 354-4616

1975 Route 336
 Romulus, NY 14541
 (315) 549-2578

* Trademark Ralston Purina Company