

HAY MARKETS



Pa. Grain

Monday, April 6, 1987
 Report supplied by PDA
COMPARED WITH LAST MONDAY'S MARKET FOR SOUTHEASTERN, CENTRAL AND SOUTH CENTRAL PA.: Corn, Barley, and Soybeans mostly steady; Wheat unevenly steady; Oats steady, instances .10 lower; Ear Corn steady, instances weaker.

Southeastern Pennsylvania

Corn No. 2-y range 1.55-1.80, average 1.68; *Contract for Harvest 1.65-1.84; @Wheat No. 2 range 2.40-3.31, mostly 2.15-3.10, average 2.90, *Contract for Harvest 2.55-2.84; Barley No. 3 range 1.45-1.66, few reported 1.35, average 1.51, *Contract for Harvest 1.10-1.30; Oats No. 2 range 1.55-1.86, average 1.73, *Contract for Harvest .75-1.00; Soybeans No. 1 range 4.80-4.99, average 4.87, *Contract for Harvest 4.60-4.77; *Gr. Sorghum #2 range 1.55, average 1.55; *+Buckwheat *Contract for Harvest 8.40; #Ear Corn range 40.00-60.00, average 50.46.

Central Pennsylvania

Corn No. 2-y range 1.60-1.75, average 1.66; @Wheat No. 2 range 2.35-3.10, average 2.69; Barley No. 3 range 1.20-1.45, average 1.36; Oats No. 2 range 1.40-1.70, average 1.58; Soybeans No. 1 range 4.40-4.90, average 4.66; *Gr. Sorghum #2 range 1.40, average 1.40; #Ear Corn range 42.00-55.00, average 48.80.

South Central Pennsylvania

Corn No. 2-y range 1.65-1.85, average 1.73; @Wheat No. 2 2.30-2.80, average 2.55; Barley No. 3 range 1.20-1.65, average 1.45; Oats No. 2 1.55-1.75, average 1.70; #Ear Corn range 50.00-65.00, average 55.78.

Western Pennsylvania

Corn No. 2-y range 1.47-2.00, average 1.75; @Wheat No. 2 range 2.10-2.45, average 2.32; Oats No. 2 range 1.35-1.55, few reported 1.80, average 1.49; #Ear Corn range 50.00-55.00, average 52.50.

Southeastern, Central & South Central Summary

Corn No. 2-y range 1.60-1.80, average 1.68; @Wheat No. 2-y

range 2.40-3.10, average 2.75; Barley No. 3 range 1.30-1.65, average 1.45; Oats No. 2 range 1.45-1.80, average 1.66; Soybeans No. 1 range 4.60-4.99, average 4.77; #Ear Corn range 42.00-60.00, average 51.44.

Month Ago

Corn No. 2-y range 1.70; @Wheat No. 2-y range 2.71; Barley No. 3 range 1.48; Oats No. 2 range 1.68; Soybeans No. 1 range 4.68; #Ear Corn range 52.78.

Year Ago

Corn No. 2-y average 2.51; @Wheat No. 2-y average 3.09; Barley No. 3 average 1.69; Oats No. 2 average 1.20; Soybeans No. 1 average 5.00; #Ear Corn average 63.94.

Regional Hay

April 6, 1987
 Eastern, Pa.
 On-Farm Sales

HAY & STRAW MARKET FOR EASTERN PA. (All Hay No. 2 and better prices paid by dealers at the farm and per ton.) Hay & Straw steady, instances weaker.

Alfalfa 85.00-120.00, few 135.00; Mixed Hay 60.00-100.00; Timothy

60.00-100.00; Straw 60.00-85.00; Mulch 35.00-50.00.

Lancaster Co.
 Auctions

SUMMARY OF LANCASTER CO. HAY AUCTIONS For Week Ending 4/3. PRICES PER TON: LOADS: 430 Hay, 68 Straw, and 29 Ear Corn.

Alfalfa 110.00-170.00; Mixed Hay 85.00-154.00; Timothy 91.00-139.00; Straw 88.00-130.00; Ear Corn 56.00-66.00.

Central Pa.
 Hay Auctions

SUMMARY OF CENTRAL PA. HAY AUCTIONS For Week Ending 4/3. PRICES PER TON: LOADS: 184 Hay, 19 Straw, and 5 Ear Corn.

Alfalfa 90.00-161.00; Mixed Hay 60.00-122.50; Timothy 62.00-97.50; Straw 65.00-101.00; Ear Corn 55.00-65.00.

Chambersburg Hay

Chambersburg, PA
Thursday, April 9, 1987
 Report Supplied by Auction
 23 loads Hay. Alfalfa, 109.00-138.00; Mixed Hay, 101.00-140.00.

Green Dragon Hay

Ephrata, Pa.
Friday, April 3, 1987
 Report Supplied by Auction
 135 loads.
 Mixed Hay, 51.00-170.00; Alfalfa, 82.00-167.00; Clover, 85.00; Timothy, 74.00-139.00; Orchard Grass, 85.00-108.00; Straw, 34.00-136.00; Corn, 57.00-66.00; Corn Fodder, 66.00; Oats, 2.10-2.50 bu.

New Holland Hay

New Holland, PA
Monday, April 6
 Report Supplied by Auction
 164 loads.
 Alfalfa, 100.00-200.00; Mixed Hay, 74.00-165.00; Timothy, 90.00-95.00; Orchard Grass, 102.00-112.00; Straw, 72.00-142.00; Ear Corn, 60.00-67.00; Oats, 2.20 bu.

Four States Hay

Hagerstown, Md.
Wednesday, April 8, 1987
 Report supplied by auction
 8 loads.
 Alfalfa 132.00-156.00; Clover/Alfalfa 124.00; Timothy 110.00; Mixed 98.00-105.00, 1.85 bale.

48% Soybean Meal, **\$200.60**

Distillers Grains, **\$141.00**

Per Ton — Delivered
EVEN LOWER PRICES FOR LARGER QUANTITIES.

Buy up to 11 tons and save more! No extra charge to blend these ingredients

NOTE We can sell for less because we sell only to people who pay promptly

WALKER COMPANY

Gap, PA 17527

717-442-4169 (Collect)

LOUIS LYONS & SON

Consign your cattle and hogs, feeder pigs & calves to Louis Lyons & Son. They offer choice service, excellent sorting & marketing of your livestock.

Charles Diller, Manager
 Phone 394-7915
 Burnell Siegrist - Buyer & Seller
 Phone 717-626-8653

Experienced Personnel

Immediate Weighing

HERE TO STAY!

MAKE 1987 THE YEAR TO GET ACQUAINTED WITH NEW HOLLAND SALES STABLES, INC. - THE ACTION AUCTION

MONDAY

FAT HOGS



EARLY BIRD HOG SALE

7:30 AM
 For Your Protection Your Hogs Must Be Identified

10:00 AM

HORSES MULES



11:00 AM

HAY STRAW GRAIN



1:30 PM BEEF SALE CALF, SHEEP, GOATS



WEDNESDAY

11:00 A.M.



HEIFERS, BULLS

NEW HOLLAND SALES STABLES, Inc.

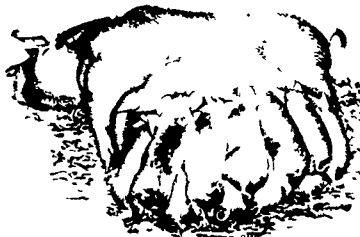
12 Miles East of Lancaster on Route 23, New Holland, Penna

The Action Auction
 717-354-4341

Mgr. - Abe Diffenbach - 717-393-4464
 Norman Kolb - 717-397-5538

Field Representatives
 Alan Diffenbach 717-656-9806
 Luke Eberly 215-267-6608 - 738-1865

WEDNESDAY - 1:30 P.M. FEEDER PIG SALE



We endeavor to keep our barns cleaner than yours. State graded until 12 Noon

THURSDAY

10:00 AM

BULLS -

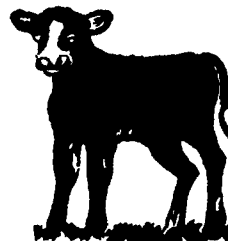


STEERS - BEEF COWS



2:30 P.M.

CALVES



SHEEP GOATS



**Market your livestock thru New Holland Sales, your neighbor does
 Pick-up your check before you leave**