

Philadelphia Vegetable

Thursday, April 9, 1987

ASPARAGUS SLIGHTLY LOWER CALIF 30-lb ctn & crt jbo 23 00-24 00 mos 24 00 few 26 00 lge 22 00-24 00 mos 23 00 few 26 00 std 22 00-23 00 Long Green jbo 25 00 lge 22 00-24 00 std few 21 00-22 00 MEXICO 30-lb crt exlge & lge 24 00

BEANS-GREEN SUPPLIES LIGHT FLA various bu containers Round Green type Handpicked 18 00 some 20 00 -BEETS TEX ctn bchd 12s 5 00-6 00 few 4 50 24s 9 00-10 00 topped 25-lb film bag 4 00-5 00 FLA 4/5 bucrts topped 7 00 NJ bucrts topped 7 00

BROCCOLI ABOUT STEADY CALIF ctn bchd 14s 17 00-19 00 mos 17 00-18 00 18s 17 00-18 00 one lot high as 20 00 FLA ctn bchd 14s 17 00

CABBAGE ABOUT STEADY 1-3/4 bucrts & crt medium Green unless otherwise stated FLA 5 50-6 50 mos 6-6 50 Savoy 7 00 Red 9 00-10 00 CALIF Red 9 00 ARIZ Red 9-9 50 TEX 5 50 Savoy 7 00-8 00 Red 10 00 fair appear 7 00

CARROTS ABOUT STEADY 48-1 lb film bags in film sacks CALIF med-lge 9 50-10 00 one label 11 00 FLA med 7 50-8 50 50-lb sacks loose jumbo CALIF 9 00-10 00 mos 9-9 50 FLA 7 50 ctn bchd 24s CALIF 10 50

CAULIFLOWER SLIGHTLY HIGHER ctn film wrpd CALIF 12s 19 00-20 00 ARIZ 9s one lot 16 00 12s one lot 17 00 16s 16 00-18 00 mos 17 00 FLA 16s 15 00-16 00 WASH 12s 19 00

CELERY ABOUT STEADY CALIF ctns 2 doz 12 50-13 00 one label 15 00 2-1/2 doz 13 50-14 50 one label 15 00 3 doz 12 00 FLA crt & ctn 2-1/2 doz 10 00-10 50 few 11 00 film wrpd 12 00 3 doz 9 00-10 00 Hearts ctn film wrpd 24s 12 00

CHINESE CABBAGE FLA celery crts 8 00-9 00 CALIF 50-lb ctn Bok Choy 12 00-13 00

CORN FLA wirebound crt approx 4-1/2 doz Yellow 10 00-11 00 mos 10 50 White no supplies

CUCUMBERS ABOUT STEADY 1-1/9 bucrts & ctn waxed med unless otherwise stated FLA 14 00-15 00 fair qual 8 00-10 00 sml 12 00 MEXICO poor cond 1 00-2 00 HAITI ord cond 3 00-7 00 fair qual & cond 3 00-7 00 sml ord cond 3 00-7 00

EGGPLANT SUPPLIES LIGHT FLA 1 1/9 bucrts fair qual 10 00-12 00

ENDIVE SLIGHTLY HIGHER FLA 1-1/9 bucrts 6-6 50 mos 6 50

ESCAROLE SLIGHTLY HIGHER FLA 1-1/9 bucrts 6-6 50

GREENS ABOUT STEADY crates approximately 1-1/2 bu bchd unless otherwise stated GA Collards 6-6 50 mos 6 00 Mustard, Turnip Tops & Rape 6 00 Kale 6 50-7 00 NJ Kale 5 50-6 00 1-1/9 bucrts Broccoli Rabe too few sales to quote Dandelion 1/2

buks 6 00-7 00 NC Collard, Kale & Rape 6 00 SC Collard 6 00 TEX 24s Collards, Mustard, Turnip Tops & Kale 6 00 CALIF 20-lb ctn Broccoli Rabe loose one label 16 00-17 00

LEES FLA & CALIF ctn bchd 12s 9 00 NJ crt bchd 12s 8 00-9 00 MEXICO ctn bchd 12s 9 00

LETTUCE ICEBERG ABOUT STEADY ctn 24s unless otherwise stated CALIF 8 00-9 00 few 9 50 fair qual low as 7 00 fair cond 6 50 few hgr ARIZ 8 00-9 00 mos 8 50 few 9 50 fair low as 7 00 film wrpd 10 00 30s 8-8 50 ROMAINE LOWER CALIF 24s ctn 12 00-14 00 few hgr & lwr crt 15 00-16 00 few hgr FLA ctn 24s 8-8 50 BIG BOSTON CALIF ctn 24s 11 00-12 50 FLA ctn 24s 8 00 BIBB SUPPLIES INSUFFICIENT TO QUOTE LEAF CALIF ctn 24s 15 00-17 00 mos 16 00 Red 15 00-17 00 ARIZ ctn 24s including Red 15 00-16 00 FLA 1 1/9 bucrts 7 50-8 00

OKRA SUPPLIES INSUFFICIENT TO QUOTE

ONIONS-GREEN STEADY MEXICO ctn bchd 48s 5 50-7 00 mos 6 50-7 00 few 5 25

PARSLEY ABOUT STEADY bunched 5 dozen Curly unless otherwise stated FLA crt 7 00-8 00 TEX ctn 8 50 fair appear 7 00 Plain fair appear 7 00 CALIF ctn 10 00 MEXICO ctn 8 50-9 00

PEAS-GREEN SUPPLIES INSUFFICIENT TO QUOTE

PEAS-SOUTHERN NO SUPPLIES

PEAS-SUGAR LOWER 10-lb crts & ctns per lb CALIF 1 90 GUATEMALA 1 80-2 00 some low as 1 50 Sugar snap 2 00 MEXICO 1 80

PEPPERS SLIGHTLY LOWER 1-1/9 bucrts & ctns Calif Wonder type Green unless otherwise stated FLA exlge 20 00 lge 19 00-20 00 med 16 00-17 00 few 18 00 sml 10 00-12 00 mos 10 00 very sml 7 00-9 00 Mixed Red med 7 00 Red med & sml 10 00

RADISHES SLIGHTLY HIGHER FLA ctns Red 30-6 oz film bags 4 00 few 4 50 14-1 lb film bags few 4 50 CALIF ctn Red bchd 24s 6 50 MEXICO ctn Red bchd 24s 5 00-6 00 LD

SPINACH SLIGHTLY LOWER Savoy type NJ bucrts 7 50 NC 1 1/4 bucrts 6 50-7 00 flat type CALIF ctn bchd 24s 6 50-8 00

SQUASH SUPPLIES INSUFFICIENT TO QUOTE

SWEET POTATOES ABOUT STEADY 50-lb ctn Jewel type cured unless otherwise stated NC 16 00-16 50 mos 16 00 fair appear 14 00 ord qual 8 00 lge 12 00 DE fair appear 10 00 CALIF 40-lb ctn uncured fair appear 10 00

TOMATOES ABOUT STEADY 25-lb ctn Pink to Light Red US Comb or better unless otherwise stated SALES BY REPACKERS FLA 5x6s 13 50 6x6s 11 50 6x7s 9 50 SALES BY OTHERS FLA 5x6s 11 00-12 00 mos 11 50-12 00 few 12 50 6x6s 9 00-10 50 few 11 00 6x7s 7 75 fair qual 5x6s 9 00-11 00 6x6s 8 00-9 00 mos 8 00 few 9 50-10 00 few low as 7 00 6x7s 6-6 50 mos 6 00 CHERRY TYPE 12-1 pint flats FLA 20 00 MEXICO 20 00

RADISHES ABOUT STEADY carton Red 30-6 ounce film bags FL 4-450*

SPINACH ABOUT STEADY Savoy type TX bushel baskets 700-800 carton bunched 24s 9-950 flat type CA carton bunched 24s 800*

SQUASH SUPPLIES LIGHT FL 1/2 bushel carton Zucchini & Yellow Straightneck Supplies insufficient to quote MEXICO lugs Zucchini small-medium one lot 10 00-12 00 medium one lot 600-700*

SWEET POTATOES 50-lb carton Jewel type cured NC 13 00-14 00*

TOMATOES ABOUT STEADY 25-lb cartons Pink to Light Red US combination grade or better unless otherwise stated Sales by Repackers FL one lot 5x6s 11 00 6x6s 900 Sales by Others FL 5x6s 11 00 6x6s 700-800 fair quality 5x6s few 10 00 6x6s 650-700 MEXICO 2-layer flat 4x5s 900 5x5s 700-800 5x6s 600-700 3-layer lugs 6x6s 700 Cherry Type 12-1 pint flats MEXICO 900*

TURNIPS topped NJ 25-lb mesh sacks medium 450*

lbs. 51.00-58.00.

CALVES 317...Choice vealers 90.00-102, few Good 71.00-87, Standard and Good 120-135 lbs. 65.00-77, 90-120 lbs. 54.00-64, 65-85 lbs. 41.00-56, Utility 50-70 lbs. 20.00-32.00. Farm Calves: Holstein Bulls 90-135 lbs. 68.00-83, Hols. Heifers 80-110 lbs. 62.00-80.00.

HOGS 523...Barrows and gilts mostly .75 lower. US No. 1-2 235-250 lbs. 48.75-49.25, lot (61 head) 49.75, 1-3 215-265 lbs. 47-48.75, 2-3 220-265 lbs. 44.85-47.60, 1-3 200-215 lbs. 43.00-47.00. Sows \$2 to \$3 higher. US No. 1-3 340-665 lbs. sows 40.50-46.50, few 2-3 380-535 lbs. 35-38.25. Boars 33.00-40.00.

FEEDER PIGS 10...Few US No. 1-3 40-60 lbs. feeder pigs 25.00-35.00 - all per head.

SHEEP 273...One Small Lot High Choice and Prime 28 lbs. spring lambs 137.50, 35-45 lbs. 115.00-127, 45-55 lbs. 100.00-120, 60-80 lbs. 84.00-101, 85-105 lbs. 82.00-88, mixed Good & Choice 45-60 lbs. 80.00-100.00. Slaughter ewes 20.00-31.00.

GOATS 21...Medium 28.00-43.00, Kids 10.00-25.00 - all per head.

Utility & Commercial sl. cows 43.00-46, few 46.50, Cutter & Boning Utility 40.00-44, Canner & Low Cutter 34-40.50, Shells down to 31.00. Couple Choice sl. bullocks 58&58.35. Yield Grade No. 1, 1100-2100 lbs. sl. bulls 47.00-56.50. Feeder Cattle: Few Medium Frame No. 1, 350-600 lbs. steers 52.00-56.00. Medium Frame No. 1, 350-680 lbs. heifers 48.00-56.00.

CALVES 104...Few Good vealers 66.00-70, Standard and Good 90-120 lbs. 53.00-64, 60-85 lbs. 40.00-53, few Utility 50-80 lbs. 18.00-30.00. Farm Calves: Holstein Bulls 90-125 lbs. 65.00-80.00.

HOGS 225...Barrows and gilts \$1.50 to \$2 higher. US No. 1-2 220-250 lbs. 51.50-52.50, lot 52.85, 1-3 215-260 lbs. 50.50-51.60, 2-3 210-255 lbs. 48.50-50.00. Few US No. 1-3 300-500 lbs. sows 42.00-46, 2-3 400-550 lbs. 39.00-43.00.

FEEDER PIGS 0...No market test.

SHEEP 24...Choice 38-50 lbs. spring sl. lambs 105.00-125.00. Few Slaughter sheep 23.00-40.00.

GOATS 2...Kids 20.00&28.00 - per head.

New Wilmington Livestock

New Wilmington, Pa. Monday, April 6, 1987

Report Supplied by PDA

CATTLE 205...PDA. Compared with last Monday's market: Slaughter cows mostly \$1 lower. Choice sl. steers 61.00-66.50, few Good 57.25-60, Good & Choice holsteins 54-57.25, few Standard 53.00-56.75. Few Choice sl. heifers 60.75-62.50, one 65.25, few Good 54-56.25, few Standard 45-49.75. Breaking Utility & Commercial sl. cows 43.00-46, Cutter & Bon. Utility 39.50-44.50, Canner & Low Cutter 35.00-40, Shells down to 32.00. Few Standard sl. bullocks 49.00-49.25. One Yield Grade No. 1, 1960 lbs. sl. bull 52.50, few No. 2 1160-1490 lbs. 46-48.75. Feeder Cattle: Few Medium & Large Frame No. 1, 775-945 lbs. steers 52.00-55.00. Few Medium Frame No. 1, 660-800 lbs. heifers 47.50-50.50, few #2 330-410

Mercer Livestock Auction

Mercer, Pa.

Tuesday, April 7, 1987

Report Supplied by PDA

CATTLE 304...PDA...Compared with last Tuesday's market: Slaughter Steers \$1.50 to \$2 higher; Cows .50 to \$1 lower. Few High Choice sl. steers 66.50-68, Choice 61.00-67, few yield grade #2, 67.50, Good 57-61.10, Standard 50.50-57.10. Few Choice sl. heifers 58.50-64, Good 55.00-59, Standard 47.50-53.50, few Utility 44.00-47.00. Breaking

East Coast Carlot Report

Thursday, April 9, 1987

COMPARED TO WEDNESDAY'S CLOSE TRADING SLOW EARLY FOR VEAL CHOICE AND PRIME SPECIAL FED VEAL GENERALLY STEADY IN NARROW TEST, NO SALES REPORTED FOR INSHIPPED COMPARED TO LAST WEEK CHOICE AND PRIME LAMB FULLY STEADY VEAL CARCASS-HIDE ON CHOICE AND PRIME (SPECIAL FED) 175 HEAD

220-280 LBS 160 00-163 00. STEADY 3 00 HIGHER

GOOD AND CHOICE BONING TYPE HIDE ON 75 HEAD

NORTHEASTERN SUPPLIERS

65-75 LBS 90 00-92 00. 2 00 LOWER

55-64 LBS 88 00-90 00

45-54 LBS 86 00-88 00

35-44 LBS 84 00-86 00

34 LBS DOWN 82 00-84 00



SOMETHING TO GROW ABOUT... LOW CLASSIFIED RATES WITH EXCELLENT RESULTS!

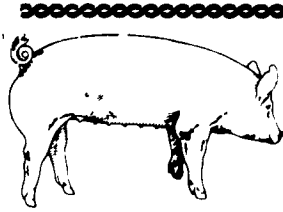
SPECIAL

65 Head of Feeder Cattle (400-700 lb.)

Tuesday, April 14, 1987

1 p.m.

Vintage Sales Stables Inc., Paradise, PA. 717-442-4181



EMERY'S BUYING STATION

OPEN TO RECEIVE YOUR MARKET HOGS

AT THE GREEN DRAGON MARKET RD 4, EPHRATA, PA 17522 1 MILE NORTH OF EPHRATA ON NORTH STATE STREET.

HOURS: MONDAY, TUESDAY, and WEDNESDAY 7:00 A.M. to 11:30 A.M. 215-458-5677 Residence 717-733-9648 Office

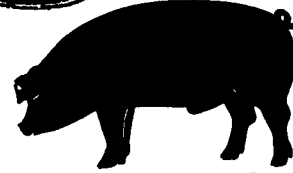
215-458-5677 Residence 717-733-9648 Office

YOU ARE PAID FOR YOUR HOGS IMMEDIATELY

Ken & Lois Emery, Proprietors



GWALTNEY of SMITHFIELD, LTD.



RECEIVING HOGS: LANCASTER COUNTY FARMERS

MONDAYS: McCoy's Branch Office, Bareville WEDNESDAYS: (Next to Bawells Butcher Shop) & FRIDAYS: on Butler Rd. 717-656-9668

TUESDAYS: B & R Cattle THURSDAYS: Marietta 717-426-3258

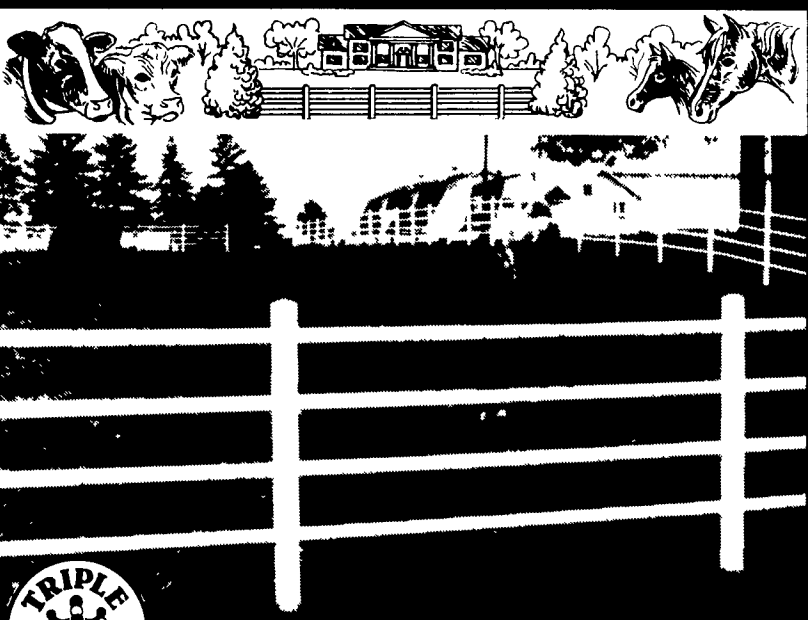
YORK COUNTY FARMERS

MONDAYS: Stewartstown 717-993-2564

TUESDAYS: Thomasville 717-792-2248 or 9836

Contact for information:

Ed Herrmann, 717-284-3203 or Charlie Kauffman, 215-593-5674 Future forward contracts available



A Beautiful, maintenance-free fence designed for safety

BEAUTY - can transform your farm into a showplace SAFETY - no sharp edges, "elastic action" rails, won't split and shatter like wood, protects your animals MAINTENANCE-FREE - never paint or treat fence again! DURABLE - impact resistant, long worry-free service SELF-CLEANING - Hi-Polymer compound cleans itself NON-TOXIC - National Sanitation Federation approved

Get full information about TRIPLE-CROWN™ tubular Hi-Polymer fence now Just call or inquire today

COMPLETE SYSTEMS, EQUIPMENT, SALES, INSTALLATION, SERVICE FOR CATTLE, HOGS AND POULTRY.

We Welcome Your Inquiries - Call Or Write



RD 4, East Farmersville Rd., Ephrata, PA 17522

(717) 354-6520

HOURS Mon-Fri 7 30 to 5 00



2020 Horse Shoe Rd., Lancaster, PA Ph. 717-397-0038

SPECIALIZING IN FLUID FERTILIZER ATTENTION ALFALFA GROWERS!

Over 5000 Acres of Alfalfa Hydro Seeded By Our Experienced Applicators With Modern Flotation Equipment.

Reserve your seed early to be assured of the Alfalfa of your choice.

ALFALFA SEEDS AVAILABLE BIG TEN - MAGNUM + - EDGE ARROW - ARMOR & Many Others