

Westminster Livestock

Small Animals, Eggs, Produce
 Tuesday, March 17, 1987
 All Prices Per Head
 Crates Sold 196.
 DUCKS: 3.50-4.75.
 GEESE: 4.00-5.50.
 PIGEONS: 1.50-3.75.
 GUINEAS: 5.00-5.50.
 DOVES: 2.50-3.10.
 CHICKENS: Large 3.00-4.75;
 Med. 1.50-3.00; Small \$1.50 Down.
 TURKEYS: 17.00-19.00.

RABBITS: Large Does \$3.50-7.50; Med. \$2-6; Small \$1.75-2.25; Angora \$3-6.
 Eggs 530 doz. All Prices Per Dozen.

Jumbo Brown .83-.92; Extra Large Brown .55-.80; Large Brown .50-.55. Medium Brown .35.
 Jumbo White .72-.74; Extra Large White .52-.71; Large White .37-.51; Medium White .31-.33; Small White .25.

PRODUCE
 Special Easter Sale Saturday, Apr. 11, 1987.

Rabbits: Poultry Eggs 10 A.M.
 Lambs & Goats: 12 Noon.

New Holland Horses

New Holland Sales Stables
 New Holland, PA
 Monday, Mar. 23, 1987
 Report supplied by auction
 Registered receipts of 226 head of horses, mules and ponies.
 Market: Steady.

Local

Better Horses: 650.00-975.00.
 Driving Horses: 300.00-585.00.
 Riding Horses: 200.00-525.00.
 Lightweight Killers: 175.00-300.00.
 Heavyweight Killers: 350.00-470.00.
 Mare Ponies: 30.00-75.00.
 Colts: 10.00-20.00.
 Gelding Ponies: 30.00-75.00.
 Larger Ponies: 100.00-200.00.

Carlisle Livestock

Carlisle, Pa.
 Tuesday, Mar. 24, 1987
 Report Supplied by Auction
CATTLE: Steers: Active 1.00 higher. Choice 61.00-63.60; Good 58.25-60.50; Medium 55.85 & Down. Choice Holsteins- 55.00-58.00; Medium-Good Holsteins 48.00-52.50. Heifers: Active 1.00 higher. Choice 58.50-60.75; Good 52.25-57.25; Medium 46.75-51.00. Cows: Strong demand 1.00 higher. High yield 44.50-46.60 couple to 50.35; Good 42.00-44.00; Medium 40.00-41.85; Big Middle 39.10-42.75; Shelly 38.50 & Down. FAT Bulls: 2.00 higher; Good 55.10-57.85; Medium 50.00-51.10.
FEEDER CATTLE: Next Tuesday will be our 2nd special spring Feeder Cattle Sale beginning at 7:00 P.M. Steers 300-550 lb. Choice 66.00-74.00; Good 59.00-65.00; 600-850 lb. Good 64.00-68.00. Heifers (all weights) Choice 60.00-

65.00; Good 55.50-59.00; Bulls (all weights) Choice 60.00-72.00; Good 51.00-59.00; Medium 46.00-50.00.
VEAL CALVES: Choice 75.00-85.00; Good 65.00-74.00; Medium 55.00-64.00; Light 48.00-54.00 weak 47.00 Down. Farm Bulls 70.00-91.00; Farm Heifers 65.00-90.00.
HOGS: Barrows & Gilts: Good run. US No. 1-3 210-250 lbs. 47.60-49.00; over 260 lb. 44.00-46.10; (all weights) 2 & 3's 40.00-47.00.
SOWS: Over 450 lb. 39.00-42.00; under 450 38.75-41.00, couple to 46.50; 2&3's 37.00 & down. Boars: Heavy 35.00-35.75; Light 43.00-46.00.

FEEDER PIGS: (by the hd) 15-20 lbs. 20.00-25.00; 30-40 lbs. 42.00-52.00; 45-67 lbs. 52.00-63.00.
SHEEP: Lambs: mostly steady on good run. Choice 90.00-122.50; Medium-Good 72.50-89.00. EWES: 20.00-30.00. Goats (Lg) 45.00-49.00 (hd) Sm./Med. 22.50-43.00.
 Sale every Tues. 7:00 P.M.
 Livestock 5:30 P.M. Rabbits, Poultry & Eggs.

Westminster Livestock Auction

Hagerstown, Md.
 Tuesday, March 24, 1987
 Report supplied by auction
SLAUGHTER COWS: Good run steady prices. High Yield 45.00-46.50, 1-50; Utility 40.00-44.50; Canners 37.00-42.00; Shelly 37.00-Down. Bulls: Good 1000-1100 lb.

49.00-50.25; Fed Steers: Few good to 54.75. Fed Heifers- Low Choice 800-950 lbs. to 53.00. Veal Calves Good & Choice 76.00-90.00; Standard 67.00-72.00; Killers 80-100 lb. 48.00-56.00; Weak/Rough 45.00 down. Farm Calves- Holstein Bulls \$20.00 lower. 95-120 lbs. 60.00-69.00; Beef cross calves 90-110 lbs. 56.00-66.00. Holstein Heifers- Steady. 100-140 lbs. 65.00-83.00. Butcher Hogs good run 25 cents lower. US #1&2 47.75-48.00; 215-240 lb. 1&3 45.00-47.00; 240-260 lb. 1 lot 44.25. Sows Large run steady prices. 350-475 lb. 38.00-41.00; 500-650 lb. 39.00-42.00. Boars 400-850 lb. 33.00-35.00.

STOCK CATTLE: 100 head. Prices steady. Steers- 300-500 lb. good 62.00-73.00; Medium 55.00-61.00; 700-850 lbs. 48.00-58.00; 850 lbs.-up 52.00-62.00; Few Holsteins cross all wts. 46.00-55.00. Heifers- 300-500 lbs. Choice 57.00-62.00, some to 69.00; 500-700 lbs. Good to Choice 54.00-62.00; Medium 45.00-53.00 700-850 lbs. Good 47.00-53.00. Bulls- 300-500 lbs. 60.70 few to 75.00; 500-700 lbs. Good to 63.00; Medium 42.00-45.00. Lambs Good demand. Choice 100-115 lbs. 78.00-86.00; Choice 60-90 lbs. 87.00-92.00; Good to 78.00 Choice 45-55 lb. 120.00-

130.00; Yearlings 44.00-50.00. Sheep 38 head, 20.00-33.00. Goats 35 head. Large 50.00-66.00; Medium 40.00-50.00; Fat kids 35.00-44.00; Small kids 20.00 down. Pigs and Shoats 75 head, \$5.00 higher. By the head 20-30 lbs. 39.00-40.00; 35-50 lbs. 43.00-45.00; 60-90 lbs. 48.00-52.00. By the lb. 80-100 lb. 49.00-56.00; 130-150 lbs. 40.00-42.00; stock boars 195-250 lbs. 34.00-35.50. 1 at 56.00; Two 40.00-43.00. Two 35.00-36.00.

Next week March 31, Special Feeder Cattle Sale at 7 p.m. Next Pig Sale will be April 3 at 1:30 p.m.

Joliet Weekly

Thursday, Mar. 28, 1987
 Report supplied by USDA
 Slaughter steers and heifers sold 2.00, instances 3.00 higher on Monday but not tested in later week trading. Receipts about 450 this week, 500 a week ago, and 622 a year ago.
SLAUGHTER STEERS: Choice 2-4 1150-1350 lbs. 62.00-64.00, load 64.50 and load Wednesday 65.75.
SLAUGHTER HEIFERS: Choice 2-4 900-1075 lbs. 61.50-63.00.

Make Hardy Brand® your hybrid.



Make every kernel count.

On the Lawrence County, Pa., dairy farm of Tom McConahy Sr. and Jr., Hardy Brand hybrids have been part of the summer landscape for the past 20 years. And the father-son team likes the view.

"It's always nice and green and it stands heavy," Tom Jr. said. "Some people have said, 'My gosh, I never saw corn like that.'"

The McConahys plant their 300 acres of corn exclusively with Hardy Brand, using 301XS and 370XS for ear corn and the new 760XS for silage. They figure their shelled corn yield equivalent at 125 to 140 bushels per acre.

In addition to performing well in the field, Hardy Brand continues to do the job after the harvest, according to Tom Jr. "Hardy corn dries down good," he said. "And one crib of corn was so clean for husking . . . that shows the quality of the crop."

The bottom line for the McConahys is the performance of the 160 cows and 100 head of young stock in the barns.

"If we don't get a good yield from our corn, then they don't eat," Tom Sr. said. "So far, they've been eating well."



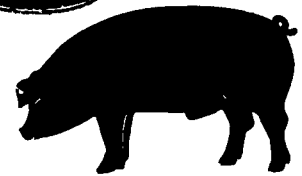
Hardy Brand Hybrid Corns are varieties for these times, when reduced acreage and slimmer profit margins are your big concerns. We've built a strong reputation on our outstanding yields, superior standability and high disease tolerance. Get the best return on your investment. Go with Hardy Brand!



Beachley-Hardy Seed Company
 P.O. Box 336 / Camp Hill, PA 17011 / (717) 737-4529



GWALTNEY of SMITHFIELD, LTD.



RECEIVING HOGS: LANCASTER COUNTY FARMERS

MONDAYS: McCoy's Branch Office, Bareville
 WEDNESDAYS: (Next to Bawells Butcher Shop)
 & FRIDAYS: on Butler Rd. 717-656-9668

TUESDAYS: B & R Cattle
 THURSDAYS: Marietta
 717-426-3258

YORK COUNTY FARMERS

MONDAYS: Stewartstown
 717-993-2564

TUESDAYS: Thomasville
 717-792-2248 or 9836

Contact for information:
 Ed Herrmann, 717-284-3203
 or Charlie Kauffman, 215-593-5674
 Future forward contracts available

FRIDAY, APRIL 10 ON THE FARM MONTHLY BRED GILT SALE

1:00 P.M.

Sale To Start Promptly Every 4 Weeks

- BLIZZARD DATE -
 Following Tuesday 1 P.M.

Located 18 miles south of Lancaster, Pa., 6 miles south of Quarryville, take Rt. 272 to Little Britain, turn north, follow Little Britain Road to Jackson Road, right. 2nd farm, OR take Rt. 222, out of Quarryville to Cedar Hill Road to Little Britain Road to Jackson Road, left. Watch for sale arrows.

50 to 60 Head WHITE DIAMOND GILTS

Here Now a new cross again.
 Large White & Landrace, first generation true F-1 gilts.
 Parent stock originated from Lieske Bros. Minnesota. Very productive in litter size and feed conversion.

Vaccinated for Lepto, Erysipias, Rhinitis, E'Coll, Pasteueralla

Hand mated with Breeding Dates

Local Truck Available
 No Hogs Sold On Commission

JOHN B. STOLTZFUS
 R.D. 1, Kirkwood, Pa.
 Abe Diffenbach, Auctioneer AU225L

NEXT SALE DATE MAY 8, 1:00 P.M.