

Lampeter Strasburg FFA Chapter Holds Annual Banquet

LAMPETER — Members of the Lampeter Strasburg FFA chapter and their parents took time out from their busy schedules March 12 to honor chapter members who earned awards during the year.

The annual banquet was held at the Lampeter Firehall. This year's star chapter farmers are Mona Becker, Robert Rush and Andy Groff. The star greenhand is Brian Weldy.

Receiving greenhand degrees were: Jeffrey Hollinger, Larra Lewis, Clinton Probst, Robert Kloefer, Lenny Weitzel, Brian Weldy, Luke Becker, Jeff Clare, Jay Harnish and Scott Breneman.

Earning recognition at the West Lampeter Fair were: Mona Becker, Scott Breneman, Robert Devonshire, Andrew Groff, Mike Hall, Jay Harnish, Jeff Hollinger, James Richards, Robert Rush, and Jackie Schrage.

Citrus sale winners are Robert Rush, Brian Weldy, Mike Hall, Denise Mills and James Richards. Honored for their success in the creed contest were Jay Harnish, Bob Kloefer, Luke Becker, Jeff (Turn to Page B26)

FREE WATCHES... FREE WATCHES... FREE WATCHES

ARMSTRONG FARM MUSCLE



All Orders Over \$250 Delivered Free To Your Farm! (Orders Under \$250... Only A Small Extra Fee)

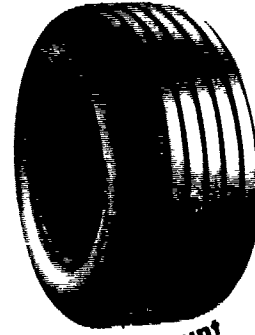


March Specials!

STOP & SEE US (Rt. 230 West of Mt. Joy, Pa.)

Ask About Free Digital Watch And Special Installation Offers!

WAGON TIRES



Special Discount \$5.00 OFF These Prices

26 1200x12 4 Ply	\$49 00
8 51x14 6 Ply	\$41 00
9 5Lx14 6 Ply	\$44 00
9 5Lx14 8 Ply	\$49 50
9 5Lx15 6 Ply	\$42 00
9 5Lx15 8 Ply	\$44 00
11Lx14 6 Ply	\$49 00
11Lx15 6 Ply	\$43 00
11Lx15 8 Ply	\$47 00
11Lx15 10 Ply	\$80 00
1000x15 8 Ply	\$80 00
11Lx15 8 Ply Tubeless	\$50 00
11Lx16 8 Ply	\$58 00
11Lx16 10 Ply Tubeless	\$74 00
12 5Lx15 10 Ply	\$75 00
12 5Lx16 14 Ply	\$85 00
12 5Lx15 12 Ply	\$87 00
14Lx16 1 12 Ply	\$140 00
16 5Lx16 1 10 Ply Tubeless	\$160 00
25x7 50x15 4 Ply Tubeless	\$44 00
25x7 50x15 6 Ply Tubeless	\$49 00
27x9 50x15 4 Ply Tubeless	\$53 00
27x9 50x15 6 Ply Tubeless	\$60 00
27x9 50x15 8 Ply Tubeless	\$65 00
31x13 50x15 6 Ply Tubeless	\$88 00
31x13 50x15 8 Ply Tubeless	\$99 00

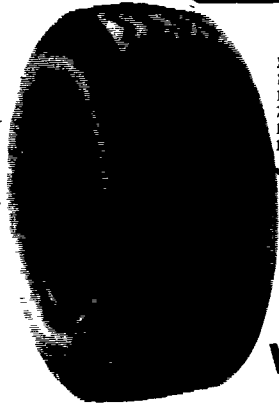
WAGON TIRES SHIPPED UPS - NO CHARGE!

We Install Tires On Your Farm
• Centre Hall • Williamsport
• Sunbury • Allentown
• North Penna. • New Jersey
• Northern Maryland

Ask About Our 4 Year Guarantee On Rear Tires Strongest In The Country

FREE MOUNTING ON Super Hi-Power Lug Radials

14 9R28 10 Ply	\$325 00
16 9R28 10 Ply	\$399 00
18 4R34 6 Ply	\$399 00
16R38 6 Ply	\$429 00
18 4R38 6 Ply	\$459 00
18 4R38 8 Ply	\$489 00
18 4R38 8 Ply	\$449 00
18 4R26 10 Ply	\$639 00
20R34 8 Ply	\$649 00
20 8R38 8 Ply	\$649 00
20 8R38 10 Ply	\$699 00



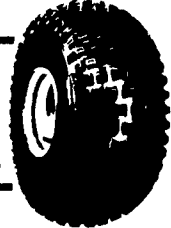
CONTRACTOR F-3

11Lx15 8 Ply	\$80 00
11Lx16 8 Ply	\$92 00
11Lx16 10 Ply	\$98 00
750 800x16 10 Ply	\$80 00
11Lx16 12 Ply	\$130 00
145 75 16 1 10 Ply	\$225 00

Ask About FREE DIGITAL WATCH OFFER

3 WHEELER TIRES

22x11 00 8	\$38 01
25x12 9	\$54 71
18x950 8	\$30 65



FRONT TRACTOR Shipped UPS - No Charge!

★ 3-RIB ★

400 12	\$22 00
400 15	\$24 00
400 19 4 Ply	\$29 00
500 15	\$31 00
550 16 4 Ply	\$33 00
550 16 6 Ply	\$36 00
600 14 6 Ply	\$52 00
600 16 4 Ply	\$37 00
600 16 6 Ply	\$41 00
650 16 6 Ply	\$42 00
75L 15 6 Ply	\$50 00
750 16 8 Ply	\$54 00
750 15 6 Ply	\$50 00
750 18 6 Ply	\$64 00
750 20 6 Ply	\$77 00
9 5L 15 6 Ply	\$55 00
9 5L 15 8 Ply	\$60 00
10 00 16 6 Ply	\$80 00
11Lx16 8 Ply	\$75 00
1100 16 8 Ply	\$110 00
14L 16 1 8 Ply	\$160 00

Ask About FREE DIGITAL WATCH OFFER!



★ 4-RIB ★

11L 15 8 Ply	\$80 00
10 00 16 6 Ply	\$80 00
10 00 16 (TL) 6 Ply	\$95 00
10 00 16 (TL) 8 Ply	\$106 00
11 00 16 6 Ply	\$108 00
11 00 16 (TL) 6 Ply	\$110 00
11 00 16 8 Ply	\$108 00
11 00 16 (TL) 8 Ply	\$123 00
14L 16 1 (TL) 6 Ply	\$180 00
14L 16 1 8 Ply	\$164 00
16 5L 16 1 (TL) 8 Ply	\$250 00

★ 5-RIB ★

1100x16 12 Ply Tubetype	\$135 00
1100x16 12 Ply Tubeless	\$150 00



Ask About Free Digital Watch Offer During March!



SKID LOADER TIRES

570x12 4 Ply	\$40 00
23 850x12 4 Ply	\$47 00
27 850x15 4 Ply	\$51 00
27 850x15 6 Ply	\$65 00
27 1050x15 6 Ply	\$70 00
700x15 6 Ply	\$65 00
750x15 6 Ply	\$68 00
10 16 5 6 Ply	\$80 00
12 16 5 8 Ply	\$120 00
Steel Shield	
10 16 5 6 Ply	\$95 00

Above Tires Shipped To You FREE

ARMSTRONG FARM TIRES

Hi Power Lug

11 2x24 4 Ply	\$106 00
11 2x24 6 Ply	\$125 00
14 9x24 4 Ply	\$161 00
14 9x24 6 Ply	\$172 00
14 9x24 8 Ply	\$200 00
16 9x24 6 Ply	\$200 00
16 9x24 8 Ply	\$220 00
14 9x26 6 Ply	\$180 00
18 4x26 6 Ply	\$247 00
23 1x26 8 Ply	\$525 00
11 2x28 4 Ply	\$120 00
12 4x28 4 Ply	\$137 00
13 6x26 4 Ply	\$150 00
13 6x26 6 Ply	\$165 00
13 6x26 8 Ply	\$195 00
14 9x28 4 Ply	\$165 00
14 9x28 6 Ply	\$185 00
16 9x28 6 Ply	\$225 00
16 9x28 8 Ply	\$245 00
16 9x30 6 Ply	\$240 00
18 4x28 6 Ply	\$300 00
18 4x30 6 Ply	\$270 00
23 1x30 8 Ply	\$650 00
24 5x32 10 Ply	\$775 00
16 9x34 6 Ply	\$270 00
18 4x34 6 Ply	\$310 00
18 4x34 8 Ply	\$335 00
20 8x34 6 Ply	\$479 00
20 8x34 8 Ply	\$510 00
23 1x26 10 Ply	\$600 00
23 1x34 8 Ply	\$689 00
11 2x38 4 Ply	\$147 00
12 4x38 4 Ply	\$175 00
13 6x38 4 Ply	\$185 00
13 6x38 6 Ply	\$205 00
14 9x38 6 Ply	\$224 00
15 5x38 6 Ply	\$235 00
15 5x38 8 Ply	\$260 00
16 9x38 6 Ply	\$295 00
16 9x38 8 Ply	\$325 00
18 4x38 6 Ply	\$340 00
18 4x38 8 Ply	\$380 00
20 8x38 8 Ply	\$520 00

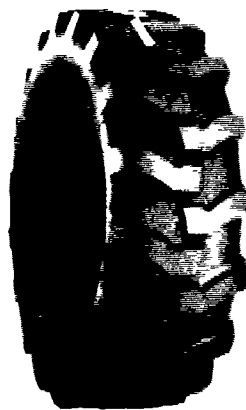
Special Installation Fee During March - Call For Quote!

ARMSTRONG

★ TUBELESS ★

16 9x24 8 Ply	\$265 00
16 9x24 10 Ply	\$330 00
17 5Lx24 6 Ply	\$245 00
17 5x24 8 Ply	\$270 00
15 5x25 12 Ply	\$310 00
17 5x25 12 Ply	\$440 00
19 5Lx24 10 Ply	\$390 00
19 5Lx24 12 Ply	\$430 00
12Lx24 12 Ply	\$500 00
20 5x25 12 Ply	\$643 00
23 5x25 12 Ply	\$960 00
23 5x25 16 Ply	\$1 000 00

Loader-Dozer



ARMSTRONG

★ TUBE TYPE ★

14 9x24 6 Ply	\$200 00
14 9x24 8 Ply	\$220 00
16 9x24 6 Ply	\$220 00
16 9x24 8 Ply	\$235 00
16 9x24 10 Ply	\$280 00
17 5Lx24 8 Ply	\$240 00
16 9x28 8 Ply	\$260 00
18 4x28 10 Ply	\$340 00
20 5x25 12 Ply	\$340 00
23 5x25 16 Ply	Call For Quote
1300x24 10 Ply	\$225 00
1300x24 12 Ply	\$245 00
1400x24 10 Ply	\$255 00
1400x24 12 Ply	\$280 00

ARMSTRONG

WANTED!

Full or Part-Time Tire REPRESENTATIVE - Applicants Should Reside In Eastern Pa. - Call or Write

Small Rear Farm Tires

750x20 4 Ply	\$59 95
750x24 4 Ply	\$64 95
8 3x24 4 Ply	\$82 00
9 5x24 4 Ply	\$92 00
11 2x34 4 Ply	\$142 00
11 2x36 4 Ply	\$144 00
12 4x34 4 Ply	\$123 00
12 4x36 4 Ply	\$175 00
13 4x36 6 Ply	\$200 00

Route 230 West

MUMMAU TIRE

Serving Farmers In Penna. New Jersey Northern Maryland and Delaware

Out Of State 717-653-1260 In Penna. 1-800-222-1729

Mt. Joy, PA

Free Digital Watch For Every 2 Tires Ordered During March!

