

### NATIONAL DAIRY COW SALE INDEX

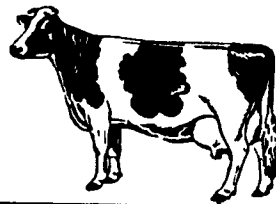
© 1987 Lancaster Farming Newspaper

This sale index can help dairymen place a value on the dairy cows in their own herds. Breed organization sales and private dispersal sales reported in Lancaster Farming are included in the dollar averages.

	Ayrshire	Brown Swiss	Guernsey	Jersey
Year to date:				
Nation	889	1099	1141	947
Pennsylvania	832	950	569	1019
Four previous weeks:				
Nation	—	—	—	781
Four previous weeks				
+/- year to date:	—	—	—	166 lower

	Holstein	Red and White	Milking Shorthorn
Year to date:			
Nation	2126	1825	850
Pennsylvania	2066	2837	922
Four previous weeks:			
Nation	2097	—	—
Four previous weeks			
+/- year to date:	29 higher	—	—

## Major Dairy Sales And Dispersals Nationwide



Reports from six sales for the week of March 10 to 17 averaged \$1,301 on 451 head. The top prices ranged from \$2,050 to \$5,600. The sales were held in Missouri, Virginia, Wisconsin and New York. Here is a brief look at the results of these sales

**GUERNSEY**  
The LYONS FARMS COMPLETE DISPERSAL held in Missouri averaged \$942 on 99 head. This number includes all the animals to go through the sale ring, from aged cows to a 3-day-old calf.

Topping the sale at \$2,700 were two daughters of Big Tex.

The first cow to sell at this price was a VG-88 5 year old. She produced a top record as a 2 year

old of 12,450 pounds of milk, 534 pounds of fat, and 438 pounds of protein in 365 days. The sale topper averaged 1,700 pounds of milk over herd mates. She was due at sale time to Wistar Deacon.

Her dam was a Housleys Dari Fayvor daughter. The next dam classified Very Good and produced a lifetime record over 178,000 milk and just under 9,000 fat.

The second cow to sell for the top price of the sale was a VG-87 3 year old. Her current Mature Equivalent record stands at 16,230 milk and 620 fat with a Cow Index of plus \$61. She posted a herd mate deviation of plus 6,800 milk. She was bred to Fayette to calve in June.

Her dam, classified VG-88 and sired by Fauver Hill Wis Domino,

produced five records which averaged 3,200 milk over herd mates. She produced a top record of 15,400 milk with a 4.4 test in 309 days.

Merv Leffler auctioneered the sale. The Guernsey Marketing Service managed the sale.

### HOLSTEIN

The VIRGINIA HOLSTEIN ASSOCIATION SPRING SALE averaged \$1,158 on 75 lots.

Two lots sold for the top price of \$2,050.

A 2-year-old, sired by Valiant, was the first animal to sell for \$2,050. Fresh on Jan. 9, she was producing 50 pounds of milk a day.

Her dam, an 85-point Pete daughter, produced a high record of 28,500 milk and 964 fat in 365 days.

The second cow to sell for \$2,050 was a 3 year old daughter of Glendell Arlinda Chief. Classified at 81 points as a 2 year old, she completed a first-calf lactation of 14,450 milk and 516 fat in 295 days. Fresh in December 1986, her current lactation stands at 3,046 milk and 145 fat in 56 days.

Her dam is an 86-point Pete (Turn to Page A39)

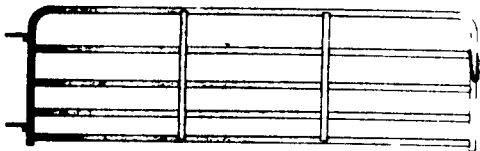
# EMHERR SPRING VALUES

## Dedicated To Serving The Farmer



### 5 BAR TUBULAR CATTLE GATES

Heavy duty, designed for your toughest areas - feedlots, crowding pens, sale barns. Will withstand abuse from your heaviest animals.



10 Ft.	12 Ft.	14 Ft.	16 Ft.
No. 400507	No. 400509	No. 400511	No. 400513
<b>\$29.65</b>	<b>\$32.55</b>	<b>\$38.95</b>	<b>\$40.95</b>



### 52" 10 LINE CATTLE PANEL

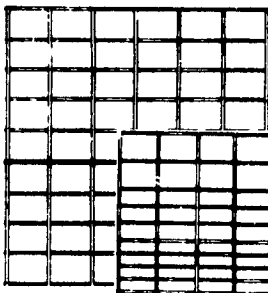
Full 1/4" galvanized wire, to withstand the beating of livestock confinement. No. 335069

**\$14.39**

### 34" HOG PANEL

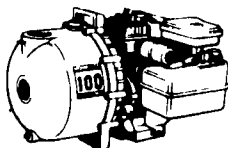
1/4" galvanized wire, 2" spacing at bottom stay wires, 4" center and 6" top. No. 335055

**\$13.15**



### HOMELITE ALL PURPOSE TRANSFER PUMPS

- Model  
• AP 215, 1 1/2" 3 H.P., 100 G.P.M. - 6,000 G.P.H.  
• AP 220, 2" 3 H.P., 140 G.P.M. - 8,400 G.P.H.



YOUR CHOICE ..... **\$179.95**

## TILLAGE BONANZA



O.E.M. Tillage Comes With Bolts & Nuts

### Long Wear Rock Shares:

14"	16"	18"
<b>\$7.49 ea.</b>	<b>\$8.49 ea.</b>	<b>\$9.49 ea.</b>

### Disc Blades

Precision Sharp Edge

Diameter	Gauge	Sale Price
18"	11	7.99
18"	9	8.99
20"	9	10.99
20"	7	13.99
22"	7	17.99
24"	1/4"	29.99

Shins: all in stock  
Now Only **\$5.99 ea.**



### Moldboards: IHC, JD

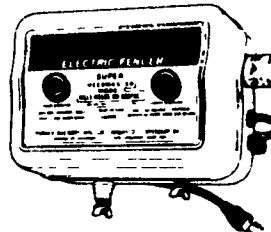
14" .....	<b>\$38.99 ea.</b>
16" .....	<b>\$41.99 ea.</b>

### Twisted Chisel Spikes

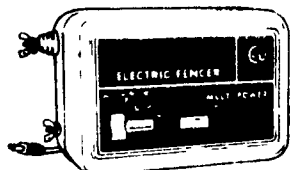
3" x 1/2" x 23" Right-Left  
**\$6.79 ea.**

## RANGEMASTER SOLID STATE FENCER

**\$41.19**



## WEED CONTROL ELECTRIC FENCER



**\$37.99**

### 17 GA. ELECTRIC FENCE WIRE

Ideal for changeable containment needs or additional security for existing systems.

1/4 Mile **\$6.39**    1/2 Mile **\$11.79**

ELECTRIC FENCE POSTS 49¢



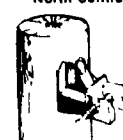
Where in earth could you use



## DRAINAGE PIPES

- Wet Spots
- Curing Erosion Problems
- Poor Yielding Crops
- Hillside Seeps
- Terrace Drainage
- Root Development
- Water Table Control

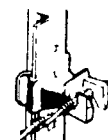
## REDSNAPR INSULATORS



Wood Post No. WP-25N  
**\$1.49**



Round Post No. RP-25N  
**\$1.99**



T Post No. TP-25N  
**\$2.29**



Gate Handle No. PG-10  
**79¢**

PRICES EFFECTIVE TILL MARCH 28

# EMHERR

Farm & Home

RD #1 - Rt. 272 So.  
Willow Street, Pa. 17584  
Ph: 717-464-3321 or  
Toll Free In PA  
800-732-0053

Your One Stop  
Hardware -  
Farm Supply  
Store

## TRUCK LOAD SALE

"We will not be undersold in tanks"

### RUGGED POLYETHYLENE

HORIZONTAL AND

VERTICAL

STORAGE

TANKS

Super Saver

Prices



Gal.	Sale Price	Gal.	Sale Price
110 Horizontal	... \$89.99	550 Vertical	... \$249.99
200 Horizontal	... \$112.69	1050 Vertical	... \$309.95
300 Horizontal	... \$131.69	1250 Vertical	... \$329.95
500 Horizontal	... \$226.59	1550 Vertical	... \$359.95
500 Vertical	... \$259.99	2200 Vertical	... \$699.00

Many Other Size Tanks Available  
Plus Fertilizer Solution Hose, Ball Valves, Quick Couplers.

### All Milk 20/20

50 lb. Bag

**\$29.99**

### High Energy Replacer

20/20

50 lb. Bag

**\$21.99**



### Milk Replacer 24/10

50 lb. Bag

**\$14.99**

### Lamvita Milk Replacer 24/30

25 lb. Bag

**\$11.99**

### Top Calf Calf Starter

50 lb. Bag

**\$5.19**

### HEAT LAMPS

125W & 250W

Clear

**\$1.19 Ea.**

