

# Dairy and Livestock Sales

## Public Auction Register

Closing Date Monday 5 00 P M  
of each week's publication

SAT. APR. 4 - 9AM Farm Mach., Tools, HH. Dorrnsite, RD. approx. 7 mis. off Rt. 225 at Red cross, via Rebusk & Greenbriar toward Leck Kill. Turn N. toward Line Mountain, at auction directional sign, for 1 mi. Raymond & Edna Keim, Owner. Seiler & Wirt Aucts.

SAT. APR. 4 - 9AM Spring Consignment Sale at Penns Valley Livestock Auction, Centre Hall, PA. At the intersection of Rt. 45 & 144.

SAT. APR. 4 - 9AM Thrid Annual Consignment Auction on the Gratz Fairgrounds, Gratz, Dauphin Co., PA. Mervin W. Adams Auct. Sale Serv.

SAT. APR. 4 - 9AM Farm

Equip., Furniture, Antiques, 15 Hd. Beef Cattle. Located approx. 4 mis. SE of Taneytown, Carroll Co., MD, OR 7 1/2 mis. W. of Westminster, MD, at 1330 Baust Church Rd. Paul A. Rodkey, Sr., Owner. Calvin L. Amoss, Auct.

SAT. APR. 4 - 9:30AM Public Auction New & Used Farm, Industrial, & Lawn & Garden Equip Marshall Machinery, Inc., Rt. 652, 5 miles east of Honesdale, Wayne Co., PA. 717-729-7117.

SAT. APR. 4 - 9:30AM Farm Machinery Dispersal Sale of Farm Mach. 6 mis. SE of Stewartstown via Rt. 851 turn on Davis Rd. and proceed 1 1/2 mis. to sale; near New Park southern York Co., PA. By order of: Mr. & Mrs. James H. Bisker, Owners. Charles W. & David W. Shrodes, Aucts.

SAT. APR. 4 - 9:30AM 2 Tractors, Farm Mach. Mifflin Co., turn W. off Rt.

322 at Burnham, PA, (Holiday Inn) exit, 3/4 mi. to Winding Lane. Donald L. Baker, Owner. Mark Glick, Auct.

SAT. APR. 4 - 10AM Real Estate, Antiques, Collectibles. 4307 Fritchey St., Hbg., PA. Directly behind Port's Pancake Restaurant at Rt. 22 & Colonial Rd. Estate of Cora Weeber. Kerry Pae Aucts.

SAT. APR. 4 - 10AM Farm Mach., Antiques, HH. RD1, Port Trevorton, PA. Annabelle Hinkle, Owner.

Longacre & Lauver Auctioneering.

SAT. APR. 4 - 10AM 160 Acre Farm, Machinery, HH, Antiques. Morrisons Cove, New Enterprise, Bedford Co., PA. Mary Hull Estate. Fred Kensing, Auct.

SAT. APR. 4 - 10AM Real Estate, Farm Eq. Between Preston, MD, on Rt. 16, approx. 5 mis. from Preston, MD. Corner of Blink Horn Rd. and Rt. 16. Nelson & Jeanette Dolby, Owner. A. Curtis Andrew Auct. Inc.

SAT. APR. 4 - 10AM Farm Eq., HH, Antiques. Lanc. Co., PA. From Washington Boro take 441 S. to Blue Rock Rd., turn left and follow to sale. Benjamin &

Anna Eshbach, Owners. Melvin Sensenig & Nevin Martin, Aucts.

SAT. APR. 4 - 10AM Farm Machinery. 1 mis. W. of Trappe, 3 mis. E. of Royersford Exit of Rt. 422, corner of Ritterhouse & Hess Rds. 10 mis. W. of Norristown, 9 mis. E. of Pottstown. By: Clay C. & Mildred Hess.

Hess & Moyer, Aucts.

SAT. APR. 4 - 10:30AM Farm, Dairy & Feeding Eq. Clearview Farm, 6 mis. S. of Somerset or 1 mi. N. of New Centerville along Rt. 281. Somerset Co. Vera & Robert Huston, Owners. Luce Auctioneers.

SAT. APR. 4 - 10:30AM Farm Eq. Near Bethel, PA, just N. of I-78. For: Gilbert

Berkenbine. Ralph W. Zettlemoyer Auct. Co., Inc.

SAT. APR. 4 - 10:30AM Farm Mach. & Dairy Eq. Rowlandsville Rd., Conowingo, MD, 1/2 mi. from intersection of Rt. 222 and US Rt. 1, first farm on right. For: Alfred & Ida Workman. George L. Gibney, Auct.

# SPRING SELECT CONSIGNMENT SALE

by  
**National Equine Center & Livestock Corp.**  
at  
**SADDLE VALLEY FARM**  
RD #3, Bangor, Pennsylvania 18013

for  
• National Show Horses • Arabians • Morgans  
• American Saddlebreds

Fine Selection of Performance & Breeding Stock

80 Chev. Dually Crew Cab w/Six-Horse Gooseneck Trailer - Ex. Cond.  
**SATURDAY, MARCH 28, 1987 - 12:00 NOON**

Saddle Valley Farm offers  
Beautiful Sales Facility • Support Services • Easy Access to Metro Areas

Nationally known auction team:  
Walt Robertson, Lexington, KY - Auct. AU-2445-L  
Bill Carrington, Knoxville, TN - Pedigree Reader

For information call:  
**Saddle Valley Farm**  
Jean Monaghan  
RD #3, Bangor, PA 18013  
215-588-8713 or  
215-588-8200



**DIRECTIONS TO SADDLE VALLEY FARM:** Rte 78 to Easton, PA to Rte 611 N 8 mi to Martins Creek, traffic light, 2 mi north on Martins Creek Rd - follow Martins Creek Rd to Saddle Valley Farm sign on left. Turn at sign - follow road to sale barn **FROM WEST:** Rte 80 to Rte 33, Bartonsville, PA (near Stroudsburg, PA). S on Rte 33, to first Wind Gap Exit, south from exit to Rte 512, Rte 512 East to Bangor, PA Rte 191 S to Ackermanville, PA At Ackermanville, bear left. Follow road to small bridge. Bear right approx 1/2 mi. Take next left turn - follow road to sale barn

## 250-350 HEAD SPECIAL HORSE SALE WORK HORSES-MULES & DRIVING HORSES

FRIDAY EVE., APRIL 10, 1987

AT NEW HOLLAND SALES STABLES, INC.

12 Miles East of Lancaster, Pa. just off Rt. 23, New Holland, Pa.



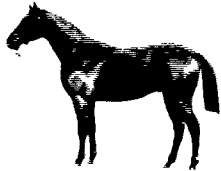
Horses Hitched At 12:00 Noon  
Tack 6:00 P.M. Sale 7:00 P.M.

- \* 2 Load Work Horses, Mules and Driving Horses consigned by Ward Wright.
- \* 1 Load Work and Driving Horses consigned by Bub Leonard.
- \* 1 Load Driving Horses consigned by Clayton Waterbury.
- \* 1 Load Driving Horses consigned by Jonas Beiler.
- \* 1 Load Driving Horses consigned by Reuben G. Stoltzfus.
- \* 1 Load Driving Horses consigned by Elam B. Stoltzfus.
- \* 1 Load Saddlebred Driving Horses consigned by Christ Stoltzfus.
- \* 1 Load Mules and Work Horses consigned by Norman Kolb.

Plus many more consigned by sale time.

For more information contact:  
Abe Diefenbach, Mgr. Norman Kolb  
717-354-4341 717-397-5538  
NEXT HORSE SALE MAY 1  
7:00 P.M.

## 4TH ANNUAL HAFLINGER PONY AND DRAFT PONY AUCTION



Saturday, April 11, 1987

For more information call Calvin "Tink" Brown 616-673-3753 or Susan Joe Casey 616-945-9398.

All Consignments Welcome  
Pony and Horse Tack, Horse Machinery And Equipment Sell at 9 A.M.

Haflinger Ponies & Draft Type Sell at 11:00 A.M.

Regular horse sale follows  
Trucking available

Lake Odessa Livestock Auction  
Lake Odessa, Mi. 48849  
616-374-8213

## PUBLIC AUCTION



MODERN FARM EQUIPMENT  
TUESDAY, MARCH 31, 1987  
at 12 Noon

(9 miles N. of Fogelsville), approx. 4 miles N. of Fogelsville turn West onto road toward Kempton for approx. 4 miles, turn S. in the Village of Lynnville, past the Church & the Rex farm onto dirt road to next farm, Weisenberg Twp., Lehigh Co. Pa.

TRACTORS: Int. 674 diesel w/wf, 3 pt., etc, 1236 hrs.; JD model G. tractor.

COMBINE: MF 300 w/11' grain head.

TILLAGE: JD 2-14' trl pl; AC 2300- 10' transport disc; JD 9' single roll cultipacker (new).

PLANTING: MF #424-18 dbl disc grain drill w/fert & grass seed attach, (new never used); JD 3 pt. tool bar w/two row 24-B unit c planter.

HAYING: NH 404 hay crusher; Ford 3 pt. 5 bar rack; Case 230 pto baler; 2-four wheel farm trailers; NH 24' bale elev.

MISC.: NI 323 one r c husker; JD 3 pt. #43 pto c sheller; NI 12-A manure spreader; Dearborn 3 pt. ground scoop; 3 pt. 6' blade; 3 pt. weed sprayer; 3 pt. two r culti; 16' alum elev; 500 lb platform scale; 10' CT water trough; Master B 125 portable heater

ANTIQUE: Lackawanna 54" high pot belly stove

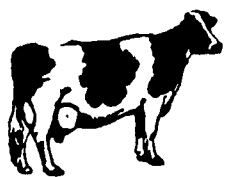
TRUCK: 1952 Int. L-130, dump truck, one ton chassis w/9 1/2' stake body.

NOTE: Above mentioned equip. in nice condition, selling because of sickness in the family. Be on time not many small items.

FOR:  
**RAY AND EVELYN HERMAN**

Conducted by  
Ralph W. Zettlemoyer Auction Co. Inc.  
(215) 395-8084  
Pa. License AU-001809-L

## Mark and Margie Taft



## HOLSTEIN MILKING HERD DISPERSAL

FRIDAY, MARCH 27, 1987

12:00 NOON SHARP!

Campbell, (Steuben Co.) New York

Sale to be held at the farm on the Dee Road. From Rte. 17 Expressway Exit 41 at Campbell, take Rte. 333 west about 2 miles, turn right onto Knowles Road and follow about 2 1/2 miles.

Preparing for a vacation, the Taft's will sell their milking herd. Those of you who attended their sale in 1985 know the quality of cattle the Tafts have!

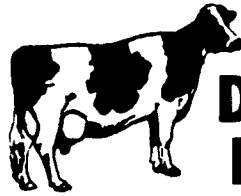
Selling will be 53 Interested tested, all first and second calf mature holsteins. These are big, productive, young freestall housed cattle that are milked in a stall barn with locking head gates. These cows are predominately from Eastern breeding and bred to top line Eastern sires. Cattle are in excellent herd health! Many cows are recently fresh, due soon, or bred for summer freshening. Quality cattle that will adapt to any type of milking operation! Pregnancy examined, shot for shipping fever and interstate ready! Trucking will be available! Lunch at sale site!

Terms: Cash or honorable check sale day! Proper ID required!

Owned by  
**MARK AND MARGIE TAFT**  
607-527-4562

Auction conducted by  
PIRRUNG AUCTIONEERS, INC.  
Wayland, New York 716-728-2520

## FARM MACHINERY & DAIRY HERD DISPERSAL



FRIDAY, APRIL 3, 1987

9:00 A.M. Sharp

Located in Franklin Co., (Path Valley) off route 75 at Dry Run Post Office, Dry Run, PA. Go South on Dry Run Road approximately 1 1/4 miles to farm.

### FARM MACHINERY - 9:00 A.M.

Case 2290 Diesel Tractor, cab, power shift; David Brown 1210 Diesel Tractor with Bush-Hog Quick-tach Front-end Loader; A.C. Model E Gleaner Combine with 10 foot Grain Head & Model 2E 2-row Corn Head, wide; Lenz 9-tooth 3 point Chisel Plow; I.H. 700 4-bottom Auto-reset Plow; Hesston 2000-150 Forage Harvester, 2-row wide & 2-row narrow corn heads; 6 foot Pickup Grass Head; Hesston 1091 Mower Conditioner; N.H. 56 Hay Rake; 2 Bale King 18 foot Pipe Bale Wagons; N.H. 24 foot Elevator; J.D. 16A Flail Chopper; N.I. 213 3-beater Manure Spreader; Arts Way 425 Grinder Mixer; Lely 3 point Fertilizer Spreader; M.F. 3 point 2-row Cultivator; Grove Forage Box for Parts; 1971 Ford F250 4-wheel Drive Pickup; Case 970 Diesel Tractor, cab; A.C. WD 45 Gas Tractor; Ford 4000 Gas Tractor with 3 point Plow & 3 point Harrow; J.D. 7000 Maxi Merge Corn Planter with No-till Attachment; N.I. No. 325 Narrow-row Corn Picker; Athens-Rhino 13 Foot Disc; Dunham 12 Foot Cultipacker; Ford 12 Foot Spring Tooth Harrow; 2 I.H. 110 Forage Wagons, both on 12 ton tandem axle wagons; Grove Wagon with 16 Foot Forage Box; I.H. No. 56 Forage Blower; Kools Forage Blower; N.H. 275 Baler with thrower; I.H. 230 3 point Mower; Little Giant 34 Foot Elevator with pto attachments; J.D. F.B.B. 15 Disc Grain Drill; I.H. 1150 Grinder Mixer; 2 Gravity Bin Wagons, 200 bushel & 165 bushel; Garber Seed Easy pto Seeder; 6 foot Rotary Mower, 3 point; Flat Wagon on N.H. running gear; 1959 International 1-ton Dump Truck; Some Shop Tools & Small Items off wagon.

### 90 - HOLSTEINS - 90

Selling at 12:00 Noon

Consisting of approximately 60 cows in milk, 12 fresh in December & January, 12 to freshen in February & March; 20 cows will be springing by sale date, balance in different stages of lactation.

15 Heifers bred from 4 to 8 months.

This is a good, uddered, young herd - producing well. Some A-I Breeding and very top registered bulls have been used here for years. All Calfhood Vaccinated - Certified & Accredited - Vet Checked for Pregnancy - Vaccinated for Shipping Fever Complex - Catalogs Day of Sale.

Sale By



Landisburg, Pa. Lic #500  
717 789-3883

Owners:  
**KENNETH S. DOYLE**  
**EDITH G. DOYLE**  
**P. MIKE DOYLE**  
17800 Dry Run Road  
Dry Run, PA  
(717) 349-2539

Lunch Stand Reserved  
Not Responsible for Accidents  
I.D. Required for Bidder's No.