



# Livestock market and auction news

## Virginia Cattle

Richmond, Virginia  
Northern, Va.  
Thurs., March 5 to  
Wed., March 11, 1987  
Report Supplied by VDA

Head Count: 10,289  
Trend: Steady to 1.50 higher.  
STEERS: Medium 1 300-500 lbs. 73.00-85.00; 500-700 lbs. 63.00-77.50; 700-1000 lbs. 62.00-74.25. Large 1 300-500 lbs. 68.50-77.50; 500-700 lbs. 68.50-77.50; 700-1000 lbs. 67.00-69.00. Small 1 300-500 lbs. 61.00-71.00; 500-700 lbs. 60.00-70.00; 700-1000 lbs. 65.00.  
HEIFERS: Medium 1 300-500 lbs. 57.50-68.25; 500-700 lbs. 55.00-64.50; 700-900 lbs. 53.00-60.25. Large 1 300-500 lbs. 60.00-67.00; 500-700 lbs. 60.00-65.00; 700-900 lbs. 59.00-60.50; Small 1 300-500 lbs. 50.00-60.00; 500-700 lbs. 50.00-60.00; 700-900 lbs. 48.00-53.00.  
South & Southwest Va.  
STEERS: Medium 1 300-500 lbs.

63.00-86.00; 500-700 lbs. 64.25-77.00; 700-900 lbs. 54.00-67.00. Large 1 300-500 lbs. 74.00-85.50; 500-700 lbs. 65.00-75.50; 700-900 lbs. 56.00-65.50. Small 1 300-500 lbs. 68.00-80.00; 500-700 lbs. 58.00-68.50.

HEIFERS: Medium 1 300-500 lbs. 62.00-73.00; 500-700 lbs. 53.00-63.75; 700-900 lbs. 50.00-59.00. Large 1 300-500 lbs. 60.00-73.50; 500-700 lbs. 55.50-64.25; 700-900 lbs. 54.00-58.00. Small 1 300-500 lbs. 53.00-66.00; 500-700 lbs. 58.00-61.50.

## Virginia Weekly Livestock

Thursday, March 12, 1987

MARKETS IN REVIEW; MARCH 5-11, 1987  
VIRGINIA FEEDER CATTLE PRICES WERE STEADY TO \$1.50 HIGHER AS SLAUGHTER CATTLE AND FEEDER CATTLE IN THE MIDWEST WERE UNEVEN \$2.00 LOWER TO \$1.50 HIGHER BEEF CARCASS PRICES WERE LOWER EARLY BUT GAINED UP TO \$1.00 BY THE CLOSE. ON TUESDAY THE BOXED BEEF CUT-OUT VALUE REACHED \$96.27/CWT. THIS WAS \$2.53 LOWER THAN LAST WEEK BEEF PRODUCTION LAST WEEK WAS UP 5 PERCENT FROM THE PREVIOUS WEEK AND 7 PERCENT ABOVE A YEAR AGO WHEN AVERAGE WEIGHTS WERE 11

LBS. HEAVIER. VEAL AND CALF PRICES AT VIRGINIA AUCTIONS FOLLOWED EAST COAST CARCASS PRICES MOSTLY STEADY TO \$2.00 LOWER SLAUGHTER LAST WEEK WAS 1 PERCENT ABOVE THE PREVIOUS WEEK BUT 10 PERCENT BELOW A YEAR AGO AND AVERAGE WEIGHTS WERE ONLY 4 LBS. HEAVIER LAMBS PRICES IN VIRGINIA AUCTIONS WERE STEADY TO \$3.00 HIGHER WHILE MIDWEST PRICES HELD STEADY TO \$1.00 HIGHER. EAST COAST CARCASS PRICES RANGED STEADY TO \$4.00 LOWER SLAUGHTER LAST WEEK WAS DOWN 3 PERCENT FROM THE PREVIOUS WEEK AND 15 PERCENT BELOW THE SAME WEEK OF 1986 AVERAGE WEIGHTS WERE ABOUT UNCHANGED. HOG PRICES IN VIRGINIA AUCTIONS WERE UNEVEN - \$1.00 LOWER TO 50 CENT HIGHER WHILE MIDWEST PRICES WERE STEADY TO \$1.50 HIGHER. PORK PRODUCT PRICES WERE STEADY TO \$5.00 HIGHER PORK PRODUCTION WAS 1 PERCENT ABOVE THE PREVIOUS WEEK BUT 3 PERCENT BELOW A YEAR AGO AS AVERAGE WEIGHTS WERE 5 LBS HEAVIER THE RICHMOND HOG MARKET CLOSED \$1.00 HIGHER THAN LAST WEDNESDAY WITH BARROWS AND GILTS 1-4, 220-250 LBS AT \$46.00-46.50/CWT TOTAL RECEIPTS FOR THE WEEK 250 HEAD THE SOUTHEAST VIRGINIA HOG MARKET CLOSED \$1.50 HIGHER THAN LAST WEDNESDAY WITH BARROWS AND GILTS 1-4, 220-250 LBS AT \$46.50-47.00/CWT TOTAL RECEIPTS FOR THE WEEK 11,145 HEAD HARRISONBURG, LYNCHBURG, AND TAPPANNOCK HOG PRICES WERE 50 CENT HIGHER THAN LAST WEDNESDAY AT \$44.50-46.50/CWT SOWS RANGED FROM \$34.00-38.00/CWT AND BOARS WERE \$28.00/CWT PRICE RANGES FOR VIRGINIA AUCTIONS SLAUGHTER CATTLE CHOICE

STEERS 2-3 1000-1300 LBS 56.00-62.25 CHOICE STEERS 2-3 1300 LBS & OVER 56.25-62.10 CHOICE HEIFERS 2-3 900-1100 LBS 55.00-58.00 CHOICE HEIFERS 2-3 1100 LBS & OVER 53.50-60.50 UTILITY & COMMERCIAL COWS 33.75-47.00 BULLS - 1-2 900-1300 LBS 44.00-56.00 FEW 39.75 1-2 1300-160 LBS 44.00-51.00; 1-2 1600 LBS & OVER 42.50-55.00 SLAUGHTER CALVES AND VEALERS VEALERS - HIGH CHOICE AND PRIME 100-250 LBS 78.00-87.00 FEW 69.00 GOOD AND CHOICE 100-250 LBS 68.50-74.00 CALVES - GOOD AND CHOICE 250-500 LBS 56.50-69.00 SLAUGHTER LAMBS HIGH CHOICE AND PRIME 95-125 LBS 76.00-82.25; SPRING 85.50-86.00 SLAUGHTER HOGS - US 2-4 200-250 LBS 43.50-47.50 SOWS US 1-3 300-500 LBS 35.00-44.75, 500 LB & OVER 38.75-43.25 FEEDER CATTLE STEERS, MEDIUM 1 300-500 LBS 73.00-86.00 FEW 63.00 500-700 LBS 62.00-74.00 FEW 77.00 HEIFERS, MEDIUM 1 300-500 LBS 62.00-73.00 FEW 55.00 500-700 LBS 50.00-64.50

## Shenandoah Valley Livestock

Harrisonburg, Va.  
Sat., Mar. 7, 1987

Report supplied by auction  
FEEDER CATTLE TREND: Steady. All other weights steady - 1.50 higher. STEERS: M&L-1 200-300 lbs. 73.00-80.00; 300-500 lbs. 67.00-79.50, 1 lot 83.00; 500-700 lbs. 65.00-73.50; 700-1000 lbs. 58.00-65.75; Holstein 300-1000 lbs. 48.75-55.25. S-L&M&L-2 300-500 lbs. 63.00-70.00; 500-700 lbs. 60.00-65.00.  
FEEDER BULLS: M&L-1 300-500 lbs. 64.50-72.00; 500-700 lbs. 57.00-64.25. S-L&M&L-2 300-500 lbs. 63.25-70.50.  
HEIFERS: Steady - 2.50 higher. M&L-1 300-500 lbs. 63.00-68.00; 500-700 lbs. 56.50-64.00; 700-1000 lbs. 53.00-59.25. S-L&M&L-2 300-500 lbs. 58.00-60.50; 500-700 lbs. 48.00-55.50.  
STOCK COWS: Baby Calves: Small & Medium 40.00-90.00; Large 94.00-100.00.  
SLAUGHTER COWS TREND: 2.00 Lower. Utility & Commercial 2-4 36.50-42.50; Canner & Cutters 1-3 31.25-35.50.  
SLAUGHTER BULLS 1&2: 44.00-48.00.  
LAMBS: Blue O High Choice & Prime Spring 85.50 - Woolled 81.50; Feeder Lambs Choice 73.00; Slaughter Ewes 20.50-33.00.  
HOGS: US 1-3 200-240 lbs. 45.00; Sows 1-3 39.00-43.00.  
SLAUGHTER CALVES: Good & Choice 59.00-65.00.

## Carlisle Livestock

Carlisle, Pa.  
Tuesday, Mar. 10, 1987

Report Supplied by Auction  
CATTLE: Steers: Good run; mostly steady & active; No high choice & prime offered; Good 55.00-59.00; Medium 50.00-54.50; Good Choice Holsteins 50.75-55.75; Medium Holsteins 44.00-49.00. Heifers- mostly steady Choice 58.25-59.00; Good 51.00-57.00; Medium 45.75-50.25. Cows- Large run with strong demand; High Yield 44.00-45.75, couple to 50.00; Good 41.00-43.75; Medium 38.00-40.75; Big Middle 36.00-41.50; Shelly 35.00 & Down. Fat bulls: good run; Medium-Good 47.50-51.00.

FEEDER CATTLE: Next Tues. March 17 will be the first special spring feeder cattle sale beginning at 7:00 p.m. Steers (400-850 lb.) Good 54.00-58.00; Medium 48.50-53.00. Heifers (all weights) active 1.00 higher. Good 52.00-58.50; Medium 45.50-51.00. Bulls (all weights) mostly steady. Good 53.50-58.00; Couple medium 50.00 & down.

VEAL CALVES: Mostly Steady. Choice 85.00-97.00; Good 65.00-84.00; Medium 50.00-64.00; Light/Weak 49.00 & Down; Farm Bulls 80.00-108.00.  
HOGS: Barrows & Gilts: 1.00 higher. US No. 1-3 210-250 lbs. 45.50-46.50; over 260 lb. 41.50-44.00; Under 200 38.75-43.50; 2&3's 43.85-45.00.  
SOWS: Over 450 lb. 39.25-42.25; under 450 38.00-40.75; 2 & 3's 32.00-37.00; Boars: Heavy 34.00-34.75; Light 39.00-45.00.

FEEDER PIGS: (by the hd) (25-35 lbs. 32.00-39.00); (40-55 lbs. 47.00-53.00).

SHEEP: Lambs: Strong demand esp. for 60-75 lb. lambs. Choice 96.00-120.00; Good 82.50-89.00. EWES mostly 24.00-32.00. Goats Sm./Med. 28.00-48.00.  
Sale Every Tuesday Evening 7:00 P.M. For Livestock; 5:30 P.M. For Rabbits, Poultry & Eggs.

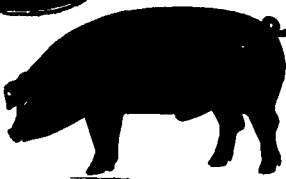
## PENNSYLVANIA LIVESTOCK AUCTION FOR SALE

23,000 s.f. metal, covered livestock area on 3 acres. 12 docks with 1 loading shoot. Sales area consists of 18 ft. wide auction block with concrete floors and a 250 seat arena. Attached 2 story, block building houses business offices, apartment and restaurant. CALL FOR FURTHER DETAILS:

ANDREW A. SPATARO, SR.  
COLDWELL BANKER-BOB YOST, INC.  
2525 EASTERN BOULEVARD,  
2nd FLOOR  
YORK, PA 17402  
(717) 755-1580



GWALTNEY of SMITHFIELD, LTD.



### RECEIVING HOGS:

### LANCASTER COUNTY FARMERS

MONDAYS: McCoy's Branch Office, Bareville  
WEDNESDAYS: (Next to Bawells Butcher Shop)  
& FRIDAYS: on Butler Rd. 717-656-9668

TUESDAYS: B & R Cattle  
THURSDAYS: Marietta  
717-426-3258

### YORK COUNTY FARMERS

MONDAYS: Stewartstown  
717-993-2564

TUESDAYS: Thomasville  
717-792-2248 or 9836  
Contact for information:

Ed Herrmann, 717-284-3203  
or Charlie Kauffman, 215-593-5674  
Future forward contracts available

## IT STIRS THE IMAGINATION...

If You've Looked at Your Lagoon Wondering How It Can Be Emptied, You've Probably Imagined Money Floating Away. You Should Be Imagining A Manure Management System To Handle Your Needs Without Costing You A Fortune.

At US Agri-Systems You'll Find The Manure Management System That Stirs Your Imagination Into Reality. State Of The Art Equipment Backed By Years Of Experience In The Manure Management Business. Many Of Your Neighbors Have Already Found US AGRI-SYSTEMS To Be The Leader In Manure Management Without Breaking The Budget. Call Them Today TOLL FREE 1-800-222-2948.

## Seeking Profits In Commodities Trading?

- Hedging
- Speculating
- Managed Account
- Commodity Options

Call Forney Longenecker,  
Commodities Investment Executive,  
At (717) 295-8914

SHEARSON  
LEHMAN BROTHERS  
29 E. King St.  
Lancaster, PA 17603



## ATTENTION BUTCHERS!

Bullocks For Sale  
Ready For Slaughter  
No Drugs or Hormones used.  
Hauling Available

Thorpe Farms  
Call  
215-862-2650 or  
215-493-4900

## OUR BUSINESS IS SERVICE TO FARMERS

Let us help you build a successful marketing program!

Call:

717-761-2740  
800-382-1356



## Grains & Livestock

- Forward Contracting
- Hedging Services

CFS

PFA COMMODITY FUTURES SERVICE, INC.

## SWINE PRODUCTION SALES AND SERVICE

Feeding Programs  
And Services To  
Meet Your Individual  
Needs

Computerized  
Record Keeping  
System

Grain Purchasing  
And Exchange

Developing Individual  
Financial Programs

Supplying Farm Fresh  
Feeder Pigs

Marketing and Hedging  
Services

Marketing of Genesis  
Breeding Stock



Quality Products And Services - Working For YOU

419 West High Street  
Elizabethtown, PA 17022

Elizabethtown  
(717) 367-1525

PA Toll Free  
1-800-468-5524

Shippensburg  
(717) 532-7845