

Ammonium Sulfate Can Improve Herbicide Performance

NEW YORK, N.Y. — For more consistent weed control from Landmaster and Roundup herbicides, weed specialists are advising growers to add ammonium sulfate to their tank mixes this spring. "Ammonium sulfate can counteract the effects of unfavorable weather conditions, which tend to make weeds more tolerant to herbicides," says Dr. Fred Roeth, weeds specialist with the South Central Research and Extension Center of the University of Nebraska. Roeth explains that ammonium sulfate improves the absorption of glyphosate, the active ingredient in Landmaster and Roundup herbicides. "When weather conditions are at extremes — hot and dry or cool and cloudy — ammonium sulfate can make a big difference in your weed control," he says.

At the North Platte experiment station, for example, addition of ammonium sulfate to Landmaster herbicide improved control of barnyardgrass by 68 to 76 percent. Landmaster alone controlled 12 percent of barnyardgrass, while Landmaster with two percent ammonium sulfate controlled 80 percent, and Landmaster with four percent ammonium sulfate controlled 88 percent.

In field trials conducted by Monsanto, addition of ammonium sulfate to Roundup herbicide improved control of annual grasses by up to 25 percent and improved control of annual broadleaves by up to 10 percent.

"As your weather conditions vary in either direction, your ammonium sulfate will have a greater effect," says Dr. Neal Hageman, product development associate with Monsanto. "It all

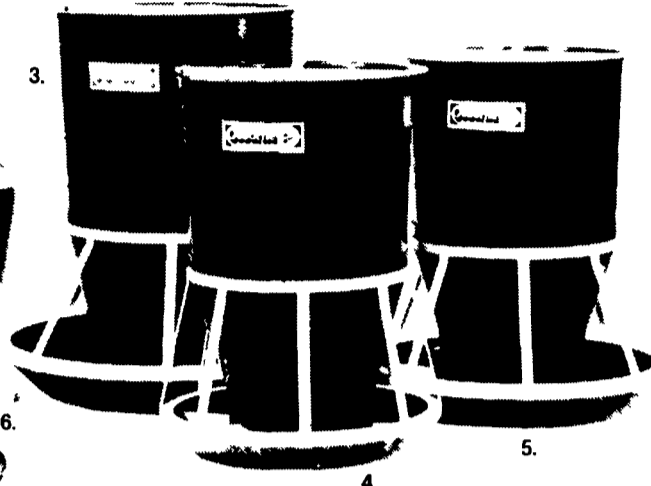
(Turn to Page D32)



HOG FEEDERS

FOR EVERY CONFINEMENT OPERATION

1. B310-1 GAL. CREEP FEEDER
2. RN4-1 BU. NURSERY FEEDER
3. RF1-7.5 BU. HOG FEEDER
4. RN1-4.5 BU. NURSERY FEEDER
5. RF2-4.5 BU HOG FEEDER
6. RN3-3 BU NURSERY FEEDER



TEST PROVEN: THE BIG WHEEL -
Most Efficient Feeder, No Feed Waste

From Farrowing Crate to Market!



TRI-COUNTY
CONFINEMENT SYSTEMS, INC.

608 E. Evergreen Rd
Lebanon, PA 17042

PH: **717-274-3488**
Hours:
Mon.-Fri. 7:00 to 4:30

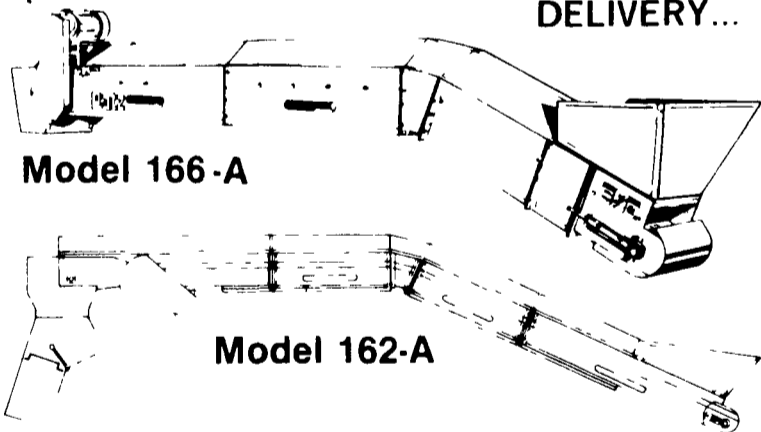
Patz

- CONVEYORS
- BELT FEEDERS
- REPLACEMENT CHAINS

Rugged And Reliable

CONVEYORS

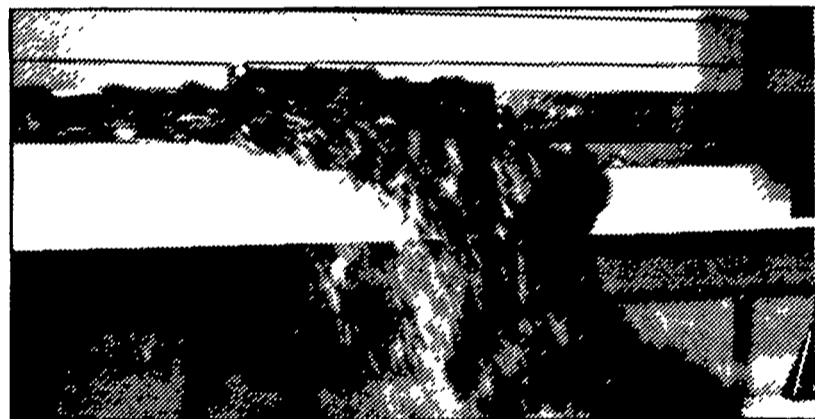
BIG
CAPACITY...
FAST
DELIVERY...



Model 166-A

Model 162-A

Built rugged for efficient, high-volume feed handling. Economical chain-and-flite action moves feed smoothly without sifting or separating.



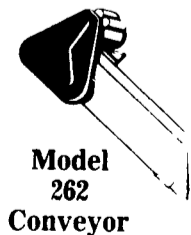
Patz BELT FEEDER

For fast, reliable, feeding plus...
easy maintenance and low investment.

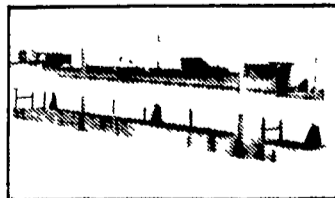
- High Volume
- Simplicity Plus
- Continuous-drive Plow
- Installs Quickly
- Mounts Left or Right Side, or Ceiling
- One Motor — No Reversing Switches

New Low Cost Conveyor

- High capacity.
- Lengths: Up to 25 feet.
- All-belt drive for low maintenance.
- Galvanized steel, all bolted construction.
- Detachable steel chain with steel-braced 2 1/2 in. rubber flites.
- Replaceable bolt-in conveyor pans.
- Options: hopper, spouts, diverter, support brackets



Model 262
Conveyor



MODEL 2120
BELT FEEDER

Multi-lot feeding with easy maintenance and low investment

- Center mount, side mount, or ceiling mount for in-barn manger feeding
- Feed any lot from convenient control panel
- Installs Quickly
- High Volume
- Simplicity Plus

CONTACT YOUR NEAREST PATZ DEALER

ALEXANDRIA MAX ISENBERG 814-669-4027	BELLEVILLE MILLER-LAKE inc. 717-935-2335	ELLIOTTSBURG CARL R. BAER 717-582-2648	LEBANON AUTOMATIC FARM SYSTEMS 717-274-5333	PIPERSVILLE MOYER FARM SERVICE 215-766-8675	SHIPPENSBURG CRIDER FARM SUPPLY 717-532-2196	HAGERSTOWN, MD TRI-STATE FARM AUTOMATION 301-790-3698	POUND, WI PATZ SALES, INC. 414-897-2251
DALLY LONGACRE ELECTRIC 215-845-2261	CAMP HILL JOHN JONES 717-737-5737	HAMBURG SHARTLESBURG FARM SERVICE 215-488-1025	McALLISTERVILLE DIEM FARM SYSTEMS 717-463-2606	QUARRYVILLE UNICORN FARM SERVICE JAMES E. LANDIS 717-786-4158	FOREST HILL, MD LESTER EDWARDS 301-838-5971 301-879-1930	KENNEDYVILLE, MD PINDER SERVICE CO. 301-348-5263	DISTRIGT MANAGER Dennis Skibo 717-664-2333