

Maryland Holstein Breeders

(Continued from Page B18)
 year-old division. His cow, Slatedale Levi's Little Luck, produced a 305 day fat corrected milk record of 23,189 pounds of

milk to garner the award. Michael Iager took home the Del-Myr Farm award for the 3-year-old division. His cow, Maple Lawn Sexation Pinky,

produced a FCM record of 27,811 pounds.

The 4-year-old award, sponsored by Brookledge Farm, went to Samuel Davis. Chestnuts Rorae Joann completed a record of 26,530 milk and 1,006 fat with a FCM of

27,787 to win the award for Davis.

Coldsprings Flacon Kudu, owned by Ian Hoff, produced the highest 5-year-old record to garner the Blue-Bell Dairy award for her owner. She recorded a 305 day FCM lactation of 27,117 pounds.

A 6-year-old cow won the 6-year-old and over division with a FCM record of 27,204 milk. Richard Bender owns the Milkmaster daughter and received the Md Sunset View Farm award.

(Turn to Page B20)

FREE WATCHES... FREE WATCHES... FREE WATCHES

ARMSTRONG FARM MUSCLE



All Orders Over \$250 Delivered Free To Your Farm! (Orders Under \$250... Only A Small Extra Fee)

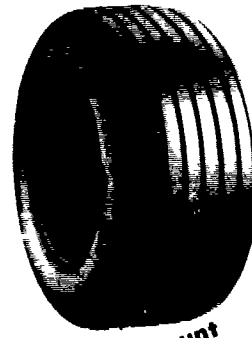


March Specials!

STOP & SEE US (Rt. 230 West of Mt. Joy, Pa.)

Ask About Free Digital Watch And Special Installation Offers!

WAGON TIRES



Special Discount \$5.00 OFF These Prices

| | |
|----------------------------|----------|
| 26 1200x12 4 Ply | \$49 00 |
| 8 51x14 6 Ply | \$41 00 |
| 9 5Lx14 6 Ply | \$44 00 |
| 9 5Lx14 8 Ply | \$49 50 |
| 9 5Lx15 6 Ply | \$42 00 |
| 9 5Lx15 8 Ply | \$44 00 |
| 9 5Lx15 10 Ply | \$49 00 |
| 11Lx15 6 Ply | \$43 00 |
| 11Lx15 8 Ply | \$47 00 |
| 11Lx15 10 Ply | \$80 00 |
| 1000x15 8 Ply | \$80 00 |
| 11Lx15 8 Ply Tubeless | \$50 00 |
| 11Lx16 8 Ply | \$58 00 |
| 11Lx16 10 Ply Tubeless | \$74 00 |
| 12 5Lx15 10 Ply | \$75 00 |
| 12 5Lx16 14 Ply | \$85 00 |
| 12 5Lx15 12 Ply | \$87 00 |
| 14Lx16 1 12 Ply | \$140 00 |
| 16 5Lx16 1 10 Ply Tubeless | \$160 00 |
| 25x7 50x15 4 Ply Tubeless | \$44 00 |
| 25x7 50x15 6 Ply Tubeless | \$49 00 |
| 27x9 50x15 4 Ply Tubeless | \$53 00 |
| 27x9 50x15 6 Ply Tubeless | \$60 00 |
| 27x9 50x15 8 Ply Tubeless | \$65 00 |
| 31x13 50x15 6 Ply Tubeless | \$88 00 |
| 31x13 50x15 8 Ply Tubeless | \$99 00 |

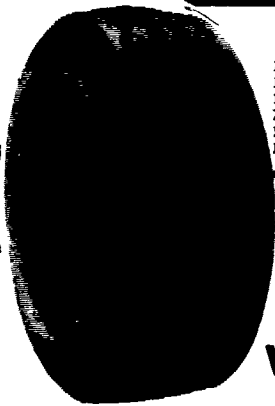
WAGON TIRES SHIPPED UPS - NO CHARGE!

We Install Tires On Your Farm
 • Centre Hall • Williamsport
 • Sunbury • Allentown
 • North Penna. • New Jersey
 • Northern Maryland

Ask About Our 4 Year Guarantee On Rear Tires Strongest In The Country

FREE MOUNTING ON Super Hi-Power Lug Radials

| | |
|----------------|----------|
| 14 9R28 10 Ply | \$325 00 |
| 16 9R28 10 Ply | \$399 00 |
| 18 4R34 6 Ply | \$399 00 |
| 16R38 6 Ply | \$429 00 |
| 18 4R38 6 Ply | \$459 00 |
| 18 4R38 8 Ply | \$489 00 |
| 18 4R26 10 Ply | \$449 00 |
| 20R34 8 Ply | \$639 00 |
| 20 8R38 8 Ply | \$649 00 |
| 20 8R38 10 Ply | \$699 00 |



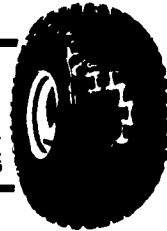
CONTRACTOR F-3

| | |
|--------------------|----------|
| 11Lx15 8 Ply | \$80 00 |
| 11Lx16 8 Ply | \$92 00 |
| 11Lx16 10 Ply | \$98 00 |
| 750 800x16 10 Ply | \$80 00 |
| 11Lx16 12 Ply | \$130 00 |
| 145 75 16 1 10 Ply | \$225 00 |

Ask About FREE DIGITAL WATCH OFFER

3 WHEELER TIRES

| | |
|------------|---------|
| 22x11 00 8 | \$38 01 |
| 25x12 9 | \$54 71 |
| 18x950 8 | \$30 65 |



ARMSTRONG FARM TIRES Hi Power Lug

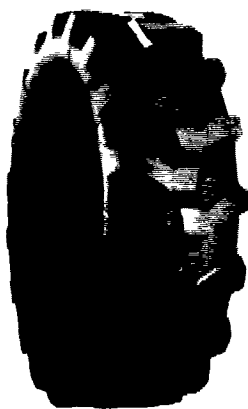


| | |
|----------------|----------|
| 11 2x24 4 Ply | \$106 00 |
| 11 2x24 6 Ply | \$125 00 |
| 14 9x24 4 Ply | \$161 00 |
| 14 9x24 6 Ply | \$172 00 |
| 14 9x24 8 Ply | \$200 00 |
| 16 9x24 6 Ply | \$200 00 |
| 16 9x24 8 Ply | \$220 00 |
| 14 9x26 6 Ply | \$180 00 |
| 18 4x26 6 Ply | \$247 00 |
| 23 1x26 8 Ply | \$525 00 |
| 11 2x28 4 Ply | \$120 00 |
| 12 4x28 4 Ply | \$137 00 |
| 13 6x28 4 Ply | \$150 00 |
| 13 6x28 6 Ply | \$165 00 |
| 13 6x28 8 Ply | \$195 00 |
| 14 9x28 4 Ply | \$165 00 |
| 14 9x28 6 Ply | \$185 00 |
| 16 9x28 6 Ply | \$225 00 |
| 16 9x28 8 Ply | \$245 00 |
| 16 9x30 6 Ply | \$240 00 |
| 18 4x28 6 Ply | \$300 00 |
| 18 4x30 6 Ply | \$270 00 |
| 23 1x30 8 Ply | \$650 00 |
| 24 5x32 10 Ply | \$775 00 |
| 16 9x34 6 Ply | \$270 00 |
| 18 4x34 6 Ply | \$310 00 |
| 18 4x34 8 Ply | \$335 00 |
| 20 8x34 6 Ply | \$479 00 |
| 20 8x34 8 Ply | \$510 00 |
| 23 1x26 10 Ply | \$600 00 |
| 23 1x34 8 Ply | \$689 00 |
| 11 2x38 4 Ply | \$147 00 |
| 12 4x38 4 Ply | \$175 00 |
| 13 6x38 4 Ply | \$185 00 |
| 13 6x38 6 Ply | \$205 00 |
| 14 9x38 6 Ply | \$224 00 |
| 15 5x38 6 Ply | \$235 00 |
| 15 5x38 8 Ply | \$260 00 |
| 16 9x38 6 Ply | \$295 00 |
| 16 9x38 8 Ply | \$325 00 |
| 18 4x38 6 Ply | \$340 00 |
| 18 4x38 8 Ply | \$380 00 |
| 20 8x38 8 Ply | \$520 00 |

Special Installation Fee During March - Call For Quote!

ARMSTRONG

Loader-Dozer



| | |
|-----------------|------------|
| ★ TUBELESS ★ | |
| 16 9x24 8 Ply | \$265 00 |
| 16 9x24 10 Ply | \$330 00 |
| 17 5Lx24 6 Ply | \$245 00 |
| 17 5Lx24 8 Ply | \$270 00 |
| 15 5x25 12 Ply | \$310 00 |
| 17 5x25 12 Ply | \$440 00 |
| 19 5Lx24 10 Ply | \$390 00 |
| 19 5Lx24 12 Ply | \$430 00 |
| 12Lx24 12 Ply | \$500 00 |
| 20 5x25 12 Ply | \$643 00 |
| 23 5x25 12 Ply | \$960 00 |
| 23 5x25 16 Ply | \$1 000 00 |

ARMSTRONG

| | |
|----------------|----------------|
| ★ TUBE TYPE ★ | |
| 14 9x24 6 Ply | \$200 00 |
| 14 9x24 8 Ply | \$220 00 |
| 16 9x24 6 Ply | \$220 00 |
| 16 9x24 8 Ply | \$235 00 |
| 16 9x24 10 Ply | \$280 00 |
| 17 5Lx24 8 Ply | \$240 00 |
| 16 9x28 8 Ply | \$260 00 |
| 18 4x28 10 Ply | \$340 00 |
| 20 5x25 12 Ply | Call For Quote |
| 23 5x25 16 Ply | \$225 00 |
| 1300x24 10 Ply | \$245 00 |
| 1300x24 12 Ply | \$255 00 |
| 1400x24 10 Ply | \$255 00 |
| 1400x24 12 Ply | \$280 00 |

ARMSTRONG

FRONT TRACTOR Shipped UPS - No Charge!

★ 3-RIB ★

| | |
|----------------|----------|
| 400 12 | \$22 00 |
| 400 15 | \$24 00 |
| 400 19 4 Ply | \$29 00 |
| 500 15 | \$31 00 |
| 550 16 4 Ply | \$33 00 |
| 550 16 6 Ply | \$36 00 |
| 600 14 6 Ply | \$52 00 |
| 600 16 4 Ply | \$37 00 |
| 600 16 6 Ply | \$41 00 |
| 650 16 6 Ply | \$42 00 |
| 75L 15 6 Ply | \$50 00 |
| 75L 16 8 Ply | \$54 00 |
| 750 15 6 Ply | \$50 00 |
| 750 18 6 Ply | \$64 00 |
| 750 20 6 Ply | \$77 00 |
| 9 5L 15 6 Ply | \$55 00 |
| 9 5L 15 8 Ply | \$60 00 |
| 10 00 16 6 Ply | \$80 00 |
| 11Lx15 8 Ply | \$75 00 |
| 1100 16 8 Ply | \$110 00 |
| 14L 16 1 8 Ply | \$160 00 |

★ 4-RIB ★

| | |
|----------------------|----------|
| 11L 15 8 Ply | \$80 00 |
| 10 00 16 6 Ply | \$80 00 |
| 10 00 16(TL) 6 Ply | \$95 00 |
| 10 00 16(TL) 8 Ply | \$106 00 |
| 11 00 16 6 Ply | \$108 00 |
| 11 00 16(TL) 6 Ply | \$110 00 |
| 11 00 16 8 Ply | \$108 00 |
| 11 00 16(TL) 8 Ply | \$123 00 |
| 14L 16 1(TL) 6 Ply | \$180 00 |
| 14L 16 1 8 Ply | \$164 00 |
| 16 5L 16 1(TL) 8 Ply | \$250 00 |

★ 5-RIB ★

| | |
|-------------------------|----------|
| 1100x16 12 Ply Tubetype | \$135 00 |
| 1100x16 12 Ply Tubeless | \$150 00 |

Ask About Free Digital Watch Offer During March!



SKID LOADER TIRES

| | |
|------------------|----------|
| 570x12 4 Ply | \$40 00 |
| 23 850x12 4 Ply | \$47 00 |
| 27 850x15 4 Ply | \$51 00 |
| 27 850x15 6 Ply | \$65 00 |
| 27 1050x15 6 Ply | \$70 00 |
| 700x15 6 Ply | \$65 00 |
| 750x15 6 Ply | \$68 00 |
| 10 16 5 6 Ply | \$80 00 |
| 12 16 5 8 Ply | \$120 00 |
| Steel Shield | |
| 10 16 5 6 Ply | \$95 00 |

Above Tires Shipped To You FREE



ARMSTRONG

| | |
|-----------------|----------|
| 8 3x24 | \$100 00 |
| 9 5x24 | \$112 00 |
| 14 9x24 6 Ply | \$200 00 |
| 16 9x24 6 Ply | \$210 00 |
| 18 4x16 1 6 Ply | \$245 00 |
| 18 4x26 6 Ply | \$360 00 |
| 13 6x28 6 Ply | \$225 00 |

USED GRASS TIRES IN STOCK!



Ask About FREE DIGITAL WATCH OFFER During March!



Free Digital Watch For Every 2 Tires Ordered During March!



Small Rear Farm Tires

| | |
|---------------|----------|
| 750x20 4 Ply | \$59 95 |
| 750x24 4 Ply | \$64 95 |
| 8 3x24 4 Ply | \$82 00 |
| 9 5x24 4 Ply | \$92 00 |
| 11 2x34 4 Ply | \$142 00 |
| 11 2x36 4 Ply | \$144 00 |
| 12 4x24 4 Ply | \$123 00 |
| 12 4x36 4 Ply | \$175 00 |
| 13 9x36 6 Ply | \$200 00 |

Route 230 West

MUMMAU TIRE

Serving Farmers In Penna. New Jersey Northern Maryland and Delaware

Out Of State 717-653-1260 In Penna. 1-800-222-1729

Mt. Joy PA