

Greencastle Livestock

Greencastle, Pa.

Monday, Feb. 23, 1987

CATTLE 506. SLAUGHTER STEERS: Choice & Prime 61.50-64.75, few to 66.10; Good & Choice 57.00-62.50; Good & Choice - Holstein 49.00-55.50, few to 57.00; Standard & Good - Holstein 44.50-55.50.

SLAUGHTER HEIFERS: Choice 59.00-63.50; Good & Choice 55.00-61.00; Standard & Good 48.00-55.50.

COWS: Utility & Commercial 41.50-46.50, few to 48.00; Cutter & Boning Utility 40.00-46.00, few to 46.85; Canner & Low Cutter 40.50 & down.

BULLS - ALL WEIGHTS: Yield Grade 1 50.00-55.50, few to 57.25; Yield Grade 2 46.50-51.75.

STOCKER CATTLE - ALL WEIGHTS. Steers - Medium & Good 60.00-77.00; Heifers - Medium & Good 54.00-62.00; Bulls - Medium & Good 50.00-64.00; Steers - Holstein 45.00-52.00.

CALVES 421. Good & Choice - 125 to 250 pounds 75.00-100.00; Medium & Good - 125 to 250 pounds 60.00-75.00; Medium & Good - 80 to 120 pounds 58.00-70.00; Light & Cull - all weights 60.00 & down; Holstein Bulls - return to farm up to 120.00; Holstein Heifers - return to farm up to 115.00.

LAMBS, SHEEP & GOATS 26. Choice Lambs 86.00; Medium & Good Lambs 70.00-80.00; Light & Cull Lambs None Offered; Sheep, Ewes & Bucks 30.00-35.00; Goats - all sizes (by head) 15.00-40.00.

HOGS 124. No. 1-3 Butcher Hogs - 190-225 pounds 47.50-48.00; No. 1-3 Butcher Hogs - 225-250 pounds None Offered; No. 1-3 Butcher Hogs - 250-300 pounds 45.75-48.75; Good Butcher Sows - 400 pounds down 43.00-47.00; Good Butcher Sows - 400 pounds up 41.00-46.00; Heavy Boars - over 300 pounds 35.00-36.25; Pigs-all sizes (by head) 34.00-52.00.

Sale every Monday afternoon at 3:30 p.m.; Hay & straw sale every Monday at 1:00 p.m.

35 loads.
Alfalfa 120.00-153.00/ton.
Mixed 85.00-115.00/ton.
Timothy 76.00-110.00/ton.
Straw 76.00-90.00/ton.

Penns Valley Livestock

Centre Hall, Pa.

Tuesday, Feb. 24

Report supplied by Auction

Beef Cows: Utility and Commercial 41.50-46.00; Cutters 37.00-41.00; Canners 33.00-36.50; Shells 30.00.

Heifers: Good 54.00-59.50; Standard 50.00-52.00; Commercial 44.00-48.00.

Steers: Choice 56.50-57.50; Good 52.00-55.00; Standard 49.00-51.00.

Bulls: Good 49.00-51.50.
Feeder Cattle: 300-500 lbs. large frame 46.00-53.00; 300-500 lbs. small frame 45.00-51.00; 500-700 lbs. large frame 47.00-50.00; 500-700 lbs. small frame 44.00-49.00.

Veal Calves: Choice 75.00-88.00; Good 61.00-74.00; Standard 52.00-60.00; Utility 45.00-50.00.

Farm Calves: Bulls 1.00-1.31; Heifers .60-1.00.

Hogs: 45.50-49.00.
Sows: 41.50-43.00.
Boars: 37.00-40.00.
Sheep: 22.00-24.00.
Goats per head: 28.00-54.00.

Carlisle Livestock

Carlisle, Pa.

Tuesday, Feb. 24, 1987

Report Supplied by Auction

CATTLE: Active 1.00 higher. Choice Holsteins 55.75-57.75; Good Holsteins 50.00-55.00; Medium Holsteins 41.75-49.50. Heifers: Steady Good 56.00-58.25; Holsteins 48.75 & Down. Cows: Strong Demand! 1.00-1.50 higher. High Yield 41.00-46.00; Good 41.00-43.75; Few Big Middle 38.50-42.50; Couple Shelly 38.00 & Down. **FAT Bulls:** Steady. Good 50.00-53.25.

FEEDER CATTLE: First special spring feeder cattle sale will be on Tuesday, March 17th 7:00 p.m. Steers 500-850 lbs. mostly Hosteins offered. Medium-Good 50.00-56.00; Culls 43.00-49.00. Bulls (all weights) Good 57.00-65.00.

VEAL CALVES: Active! Strong demand for farm bulls. Choice 80.00-96.00; Good 65.00-79.00; Medium 51.00-64.00; Light/weak 50.00 & Down; Farm Bulls 85.00-124.00; Farm Heifers 70.00-80.00.

HOGS: Barrows & Gilts good run 2.00 lower. 210-250 lbs. 46.75-48.00; over 260 lb. 45.50-49.00; Under 200 40.25-45.00.

SOWS: Over 450 lb. 40.75-44.00; under 450 43.75-45.00 2 & 3/2 39.00 & Down. Boars: Heavy 35.25-35.50.

FEEDER PIGS (by the Hd) 20 lbs. 22.00; 25-40 lbs. 38.00-43.00; 45-55 lbs. 45.00-60.00.

SHEEP: Lambs: Strong Demand! 3.00-5.00 higher (strongest demand for 60 to 75 lbs.) Choice 86.00-102.00; Good 67.00-80.00. **EWES** 23.00-35.00.

Next State Graded Feeder Pig Sale: Friday, March 13th 1:30 p.m.

Grantsville Livestock

Grantsville, Maryland

Saturday, Feb. 21, 1987

Large: 40-50; Medium: 35-40.

HOGS: Top Barrows & Gilts 47.00-48.50; Heavy Butcher 45.00-48.00; Light Butcher 40.00-47.50; Butcher Sows 35.00-42.50; Feeder Shoats 20.00-43.00.

VEAL: Good 70.00-89.00; Standard 50.00-65.00; Utility 35.00-45.00; Bull 90.00-113.00.

SHEEP & LAMBS: Good 65.00-72.00; Utility 60.00-62.50; Slaughter Ewes 20.00-30.00.

SLAUGHTER CATTLE: Steers: Good 58.00-60.00; Standard 52.00-55.00; Utility 45.00-50.00.

HEIFERS: Good 53.00-60.00; Standard 50.00-52.00; Utility 40.00-45.00.

COWS: Commercial 40.00-47.00; Utility 36.00-38.00; Canner & Cutter 30.00-35.00.

BULLS: Commercial & Good 43.00-51.00; Cutter & Utility 40.50-42.00.

STOCK-FEEDER CATTLE: Yearling Steers: Good 62.00-68.50; Medium 50.00-55.00.

STEER CALVES: Good 65.00-72.50; Medium 52.00-60.00.

HEIFER CALVES: Good 55.00-63.75; Medium 42.00-52.00.

Kish Valley Buying Station

Belleville, Pa.

Wednesday, Feb. 25, 1987

STEERS: Choice 56.50-58.00; Good & Choice 54.00-56.00.

HEIFERS: Good 43.50-47.00; Standard 41.50-43.00.

BEEF COWS: Utility & Commercial 40.00-43.50; Cutter & Boning Utility 37.00-39.50; Canner & Low Cutters 33.00-36.50; Shells

down to 29.00.

BULLS: 1,392 lbs. to 2,014 lbs. 46.00-48.50.

CALVES: Standard & Good 38.00-66.00.

FRM CALVES HOL. BULLS: 90 lbs. to 130 lbs. .85-1.00.

HOGS: 210-250 lbs. 44.75-46.00; 190-270 lbs. 43.00-44.50.

SOWS: 300-400 lbs. 36.50-37.50; 500 lbs. up 37.00-38.50.

BOARS: 33.00-37.00.

F & S OF VIRGINIA HAY AUCTION

NEW MARKET, VA

EVERY TUESDAY, AT 11:30 A.M.

Open to everyone to buy & sell.

Drought Stricken area in the heart of the Shenandoah Valley Horse Country, Dairy & Beef Cattle Country. 3% Commission will be charged to the sellers.

Auction will be conducted at the F & S Auto Auction, located on Rt. 11 North, 2 miles North of New Market, VA and 3 miles South of Mount Jackson, VA.

Our policy is cash, certified check or bank approved letter.

For more information call: 703-740-8005 or 703-298-9187.

Seeking Profits In Commodities Trading?

- Hedging
- Speculating
- Managed Account
- Commodity Options

Call Forney Longenecker, Commodities Investment Executive, At (717) 295-8914

SHEARSON LEHMAN BROTHERS
29 E. King St.
Lancaster, PA 17603



NEW PRODUCTS HAVE ARRIVED!

START SMART FOR PIG PROFITS

MILK REPLACER

* Baby Pig Milk Replacer

PRE-STARTER

- * Hi-Octane Hi-Milk Pig Pellets
- * Hi-Octane Baby Pig Chow

STARTERS

- * Hi-Octane Pig Starter 28-56
- * Pig Starter 4-4-4
- * Pig Startena



Let Us Prove Our Starter Program And Earn Your Business!

FEEDS THAT FIT THE WAY YOU OPERATE.

Quality Products, Quality People



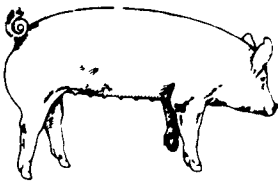
KEYSTONE MILLS

—Serving Agriculture—Since 1894—

R.D. 3
Ephrata, PA 17522
(717) 354-4616

1975 Route 336
Romulus, NY 14541
(315) 549-2578

* Trademark Ralston Purina Company



EMERY'S BUYING STATION

OPEN TO RECEIVE YOUR MARKET HOGS AT THE GREEN DRAGON MARKET RD 4, EPHRATA, PA 17522 1 MILE NORTH OF EPHRATA ON NORTH STATE STREET.

HOURS: MONDAY, TUESDAY, and WEDNESDAY 7:00 A.M. to 11:30 A.M.
215-458-5677 Residence
717-733-9648 Office

215-458-5677 Residence
717-733-9648 Office

YOU ARE PAID FOR YOUR HOGS IMMEDIATELY

Ken & Lois Emery, Proprietors

HAY & STRAW SALE

12:00 Noon
Every Wednesday
Westend of Avondale at the intersection of Baltimore Pike and Route 41.

Harvey Z. Martin
215-268-3604 (Office)
215-445-5303 (Residence)

KING'S AUCTION

KIRKWOOD

Hay, Straw and Grain Auction EVERY TUESDAY

12:00
Located Rt 472 5 miles south of Quarryville or 6 miles north of Oxford at Shaub's Auction House

Lloyd H. Kreider
Auctioneer
AU-000513L

No out of state checks ALL TRUCKERS AND FARMERS WELCOME

