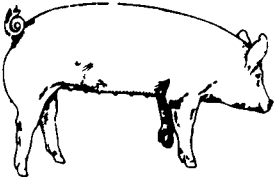


**Green Dragon Hay**  
Ephrata, Pa.  
Friday, Feb. 13, 1987  
Report Supplied by Auction

165 loads.  
Mixed Hay, 76.00-161.00; Alfalfa,  
86.00-162.00; Orchard Grass, 86.00-  
120.00; Timothy, 80.00-130.00.

Clover, 93.00; Straw, 78.00-  
122.00; Corn, 63.00-74.00; Oats, 1.70-  
1.95 bu.



**EMERY'S  
BUYING  
STATION**

**OPEN TO RECEIVE  
YOUR MARKET HOGS**

**AT THE GREEN DRAGON MARKET  
RD 4, EPHRATA, PA 17522  
1 MILE NORTH OF EPHRATA  
ON NORTH STATE STREET.**

**HOURS: MONDAY, TUESDAY, and  
WEDNESDAY 7:00 A.M. to 11:30 A.M.  
215-458-5677 Residence  
717-733-9648 Office**

**215-458-5677 Residence  
717-733-9648 Office**

**YOU ARE PAID FOR YOUR  
HOGS IMMEDIATELY**

Ken & Lois Emery, Proprietors

**Green Dragon  
Livestock Sales**



Location: Ephrata RD 4. 1  
mile N. on North State St.,  
Ephrata.

**COWS COWS COWS  
SALE EVERY FRIDAY**

Lots of good Northern Feeder  
& Stockers. Slaughter Cows  
- Bull Steer, Veal-lamb.

**11:00 A.M.-Beef Sale 200-300 each week.  
1:00 P.M.-Dairy Sale.  
7:00 P.M.-Small Animal Sale.**

For Special Sales and Herd Dispersals  
on farm or at our barn or other market  
information call: Office 717-733-2444,  
Home 717-838-4318.

**WALTER H. RISSER, Proprietor**  
All out of state and new buyers must have  
cash or certified check or current letter of  
credit from bank.

**National Grain  
Summary**

Wednesday, February 18, 1987

WHEAT MARKETS MIXED, DOWN 1/4 CENTS  
TO UP 3 CENTS PER BUSHEL AS EXPORT TRADE  
EXPANDED CORN MARKETS DULL AND  
MOSTLY 1 CENT LOWER SOYBEAN MARKETS  
UNCHANGED TO 3 CENTS PER BUSHEL LOWER  
WITH LOWER SOYBEAN MEAL AND OIL  
FUTURES MARKETS DEPRESSING PRICES  
GRAIN PAYMENT IN KIND CERTIFICATES  
STRONGER AND TRADING AS HIGH AS 110% OF  
FACE VALUE

WHEAT KANSAS CITY 2 76-2 77 UNCH + 1  
3 29-3 31 MINNEAPOLIS 3 11 1/4 1/4 3 86  
PORTLAND 3 06-3 08 + 3 3 75-3 76SAS CITY  
4 70-4 75 - 2 5 27 MINNEAPOLIS 4 69 1/4 UNCH  
5 18 1/4 SO IOWA UNCH UNCH 5 33-5 36 C ILL  
PROCESSORS 4 82 1/2-4 88 1/2 - 3 5 29 1/2-5 38  
1/2

\*KANSAS CITY, U.S. NO 1 HARD RED WINTER  
WHEAT, ORDINARY PROTEIN MINNEAPOLIS,  
U.S. NO 1 DARK NORTHERN SPRING WHEAT,  
14% PROTEIN, PORTLAND NO 1 SOFT WHITE  
WHEAT, AND ST LOUIS, NO 2 SOFT RED  
WINTER WHEAT

GRAIN FUTURES CLOSE  
KANSAS CITY WHEAT 2 68 1/4 + 1/4 3 16 1/2  
MINNEAPOLIS WHEAT 2 73 1/4 1/4 3 36  
CHICAGO WHEAT 2 77 + 1/4 3 26  
CORN 1 44 1/4 - 1 2 39 1/4  
SOYBEANS 4 85 1/4 2 5 21 1/4  
EXPORT PRICES BARGE OR RAIL, GULF  
DELIVERY

NO 1 HARD RED WINTER WHEAT ORDINARY  
PROTEIN 3 04 1/4-3 05 1/4 + 1 1/4 + 1 1/4 NO 1  
SOFT RED WINTER WHEAT 3 12 3 14 UNCH 1  
NO 2 YELLOW CORN 1 60 1/4-1 63 1/4 3/4 +  
1/4 NO 2 YELLOW SORGHUM 2 98-3 05 2 + 2  
NO 2 YELLOW SOYBEANS 5 05-5 06 1/4 2 3/4  
3

**King's Hay**

Kirkwood, Pa.

Tuesday, Feb. 17, 1987

Report supplied by Auction

64 loads.  
Alfalfa, 94.00-188.00, mostly 120-  
152; Alfalfa Mix, 81-150; Mixed  
Hay, 84-138; Timothy and Timothy  
Mix, 96-130; 16 loads straw, 102-  
138; Wood 30-50/load.

**Dewart Hay**

Dewart, PA.

Monday, Feb. 16, 1987

Report Supplied by Auction

38 loads Hay, 51.00-106.00; 9 loads  
Straw, 78.00-89.00; 28 loads Wood,  
27.00-71.00 ld.; Corn, 55.00.

**Four States Hay**

Hagerstown, Md.

Wednesday, Feb. 18, 1987

Report supplied by auction

16 loads.  
Alfalfa: Fancy 125.00-152.00;  
Good 100.00-120.00; Medium, 92.00.  
Timothy: 93.00-131.00.  
Mixed Medium: 60.00-76.00.  
Straw: 74.00

**Frederick Co.  
Hay**

Buckeystown, Md.

Thursday, Feb. 19, 1987

Report Supplied by Auction

111 loads. Market about steady  
on all grades Hay and Straw.  
Demand good.

Alfalfa, 6 fancy, 146.00-167.00, 12  
fair to good, 117.00-142.00, 2 big  
bales, some damaged, 50.00-75.00;  
Alfalfa Mix, 16 fair to good, 102.00-  
160.00.

Timothy, 9 good or better, 117.00-  
135.00; 4 fair, some damaged,  
82.00-100.00; Timothy and Clover, 6  
fair to good, 104.00-131.00.

Mixed Hay, 20 fair to good, some  
damaged, 69.00-132.00; Straw, 18  
bright, 87.00-120.00, 2 dark, 50.00-  
70.00.

Firewood, 7 hardwood, 50.00-  
83.00; 1 load Slabwood, 26.00 cord.

Oats, 2.05 bu.; Round Locust  
Posts, 2.25 ea.

**New Holland Hay**

New Holland, PA

Monday, Feb. 16

Report Supplied by Auction

312 loads.  
Alfalfa, 73.00-171.00; Mixed Hay,  
66.00-150.00; Timothy, 52.00-134.00;  
Clover, 96.00-118.00; Orchard  
Grass, 82.00-115.00; Straw, 72.50-  
126.00; Ear Corn, 66.00-73.00; Oats,  
1.95 bushel.

**Kansas Hay**

St. Joseph, Mo.

Monday, February 16, 1987

LIGHT RAIN AND SNOW THIS WEEK, GOOD  
DEMAND FOR DAIRY AND HORSE HAY  
HOWEVER SUPPLY LIMITED OTHER SUPPLIES  
ADEQUATE PREMIUM QUALITY BALED  
ALFALFA OUT OF BARN 70 00-80 00 PER TON  
GOOD TO PREMIUM QUALITY 60 00-70 00. GOOD  
QUALITY OUTSIDE STACKED 45 00-55 00.  
LOOSE STACKED 35 00-40 00 WITH CHOPPED  
AND LOCAL DELIVERY TO FEED YARDS 52 00-  
57 00 FAIR TO GOOD QUALITY GRINDING HAY  
INCLUDING SMALL AND BIG ROUND BALES  
25 00-35 00 PER TON SUN CURED ALFALFA  
PELLETS 15% PROTEIN 74 00-78 00 PER TON  
SOUTHWEST KANSAS, GARDEN CITY AREA  
MOST SALES UNCHANGED FROM LAST WEEKS  
TRADING LIGHT RAIN AND SNOW BENEFITTED  
HAY TRADING GOOD QUALITY LOOSE  
STACKED ALFALFA HAY 45 00-50 00 PER TON  
CHOPPED AND LOCAL DELIVERY 55 00- 60 00  
PER TON SUN CURED ALFALFA PELLETS 15%  
PROTEIN 78 00  
SOUTHEAST KANSAS LIGHT RAIN, IM  
PROVED DEMAND PRICES STEADY GOOD  
QUALITY BALED PRAIRIE HAY 40 00-45 00 PER  
TON LARGE SQUARE BALES 45 00-50 00 PER  
TON GOOD QUALITY BALED ALFALFA OUT OF  
BARN 50 00-60 00 PER TON. SOME PREMIUM  
QUALITY DAIRY HAY 60 00-70 00 PER TON  
DEHYDRATED ALFALFA PELLETS 17% PROTEIN  
94 00 PER TON

**THE GOOEY BUSTERS**

Who Are You Going To Call When Your Lagoon Is Full Of  
Immovable Solids? Who Are You Going To Call When Your  
Equipment Isn't Capable Of Handling Your Manure Mangement  
Needs? Who Are You Going To Call When You're Uncertain If The  
Free Advice And Free Money Available Will Solve Your  
Problems?

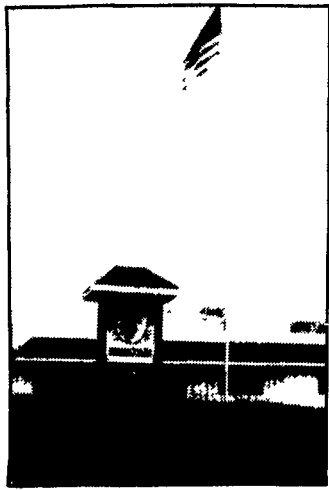
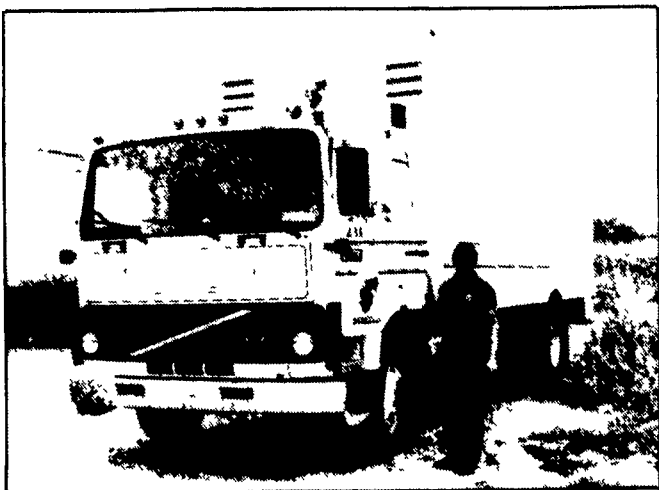
You're Going To Call THE GOOEY BUSTERS At US Agri-Systems.

At US AGRI-SYSTEMS You'll Find State Of The Art Equipment  
And People With The Knowledge And Experience To Handle Your  
Gooey Problems. Call US Agri-Systems And Get Rid Of The Gooey.  
1-800-222-2948

**MELHORN SALES, SERVICE,  
TRUCKING CO.**

1010 W. Main St., Mount Joy, PA 17522

**LOCAL DEKALB HATCHERY TEAM**



Four nearby locations capable of large volumes to fill  
your orders in 1 to 2 consecutive days utilizing  
professional people and state of the art equipment.  
This provides you with fast, efficient service  
that results in a top quality chick.

The only full service company, in this area, to handle the total  
needs of the poultrymen.

For More Information Phone:  
**717-653-1102**

Monday - Friday 8:30 AM - 4:00 PM



**Seeking Profits In  
Commodities Trading?**

- Hedging
- Speculating
- Managed Account
- Commodity Options

Call Forney Longenecker,  
Commodities Investment Executive,  
At (717) 295-8914

**SHEARSON  
LEHMAN BROTHERS**  
29 E. King St.  
Lancaster, PA 17603



**D & H Cattle  
Transport**

Local and Long  
Distance Hauling  
With A 24 Ft  
Gooseneck Trailer

Call Don At  
**717/284-2580**  
Lancaster, Pa

**ATTENTION  
CATTLE PRODUCERS:**

On Feb. 4, 1987 you could have guaranteed  
over \$60.00/cwt. for June delivery.

Would this price guarantee you a profit?  
If so, why speculate?!!

CALL US FOR UPDATED  
FORWARD CONTRACT  
QUOTES

717-761-2740  
800-382-1356



**CFS**

PFA COMMODITY FUTURES SERVICE, INC.