

HAY MARKETS



Pa. Grain

Monday, Feb. 9, 1987
Report supplied by PDA
COMPARED WITH LAST TUESDAY'S MARKET FOR SOUTHEASTERN, CENTRAL AND SOUTH CENTRAL PA.: Corn mostly steady to .5 lower; Wheat fully steady; Barley, Soybeans, and Ear Corn steady to strong, Oats mostly steady to .15 higher.

Southeastern Pennsylvania

Corn No. 2-y range 1.65-1.90, average 1.77; *Contract for Harvest 1.70-1.84; @Wheat No. 2 range 2.68-3.10, few reported 3.33, average 2.91; *Contract for Harvest 2.55-2.77; Barley No. 3 range 1.30-1.65, average 1.51; *Contract for Harvest 1.30; Oats No. 2 range 1.55-1.90, average 1.73; *Contract for Harvest 1.30; Soybeans No. 1 range 4.62-5.00, average 4.84; *Contract for Harvest 4.60-4.85; *Gr. Sorghum #2 range 1.70, average 1.70; #Ear Corn range 45.00-65.00, average 52.09.

Central Pennsylvania

Corn No. 2-y range 1.70-1.90, average 1.79; @Wheat No. 2 range 2.35-3.00, average 2.62; Barley No. 3 range 1.25-1.45, average 1.37; Oats No. 2 range 1.35-1.75, few reported 1.20, average 1.48;

Soybeans No. 1 range 4.40-4.90, average 4.66; *Gr. Sorghum #2 range 1.50, average 1.50; #Ear Corn range 47.00-50.00, average 50.00.

South Central Pennsylvania

Corn No. 2-y range 1.70-1.95, average 1.79; @Wheat No. 2 2.30-2.50, few reported 2.70, average 2.44; Barley No. 3 range 1.35-1.65, few reported 1.20, average 1.43; Oats No. 2 1.45-1.75, average 1.61; #Ear Corn range 50.00-65.00, average 56.57.

Western Pennsylvania

Corn No. 2-y range 1.57-2.00, average 1.81; @Wheat No. 2 range 2.10-2.40, average 2.27; Oats No. 2 range 1.25-1.65, average 1.38; #Ear Corn range 40.00-54.00, average 46.00.

Southeastern, Central & South Central Summary

Corn No. 2-y range 1.70-1.90, average 1.78; @Wheat No. 2-y range 2.35-3.10, average 2.69; Barley No. 3 range 1.30-1.65, average 1.45; Oats No. 2 range 1.35-1.85, average 1.59; Soybeans No. 1 range 4.60-5.00, average 4.77; #Ear Corn range 45.00-65.00, average 52.46.

Month Ago

Corn No. 2-y range 1.78; @Wheat No. 2-y range 2.68; Barley No. 3

range 1.40; Oats No. 2 range 1.39; Soybeans No. 1 range 4.68; #Ear Corn range 48.75.

Year Ago

Corn No. 2-y average 2.53; @Wheat No. 2-y average 3.05; Barley No. 3 average 1.69; Oats No. 2 average 1.20; Soybeans No. 1 average 4.93; #Ear Corn average 62.47.

Regional Hay

Feb. 9, 1987
Eastern, Pa.
On-Farm Sales

HAY & STRAW MARKET FOR EASTERN PA. (All Hay No. 2 and better prices paid by dealers at the farm and per ton.) Hay & Straw steady, spots \$5 higher.

Alfalfa 90.00-125.00; Mixed Hay 80.00-100.00; Timothy 80.00-100.00; Straw 75.00-95.00; Mulch 30.00-50.00.

Lancaster Co. Auctions

SUMMARY OF LANCASTER CO. HAY AUCTIONS For Week Ending 2/6. PRICES PER TON: LOADS: 429 Hay, 211 Straw, and 23 Ear Corn.

Alfalfa 91.00-164.00; Mixed Hay 85.00-154.00; Timothy 90.00-138.00; Straw 94.00-144.00; Ear Corn 53.00-72.00.

Central Pa. Hay Auctions

SUMMARY OF CENTRAL PA. HAY AUCTIONS For Week Ending 2/6. PRICES PER TON: LOADS: 215 Hay, 44 Straw, and 7 Ear Corn. Alfalfa 81.00-141.00; Mixed Hay 60.00-121.00; Timothy 66.00-110.00; Straw 67.50-112.50; Ear Corn 56.00-67.50.

Leinbach's Hay

Shippensburg, PA
Feb. 7 & 10, 1987

Report supplied by Auction
107 loads.

Alfalfa, 86.00-160.00; Mixed Hay, 68.00-135.00; Timothy, 83.00-117.00; Brome, 73.00-123.00; Orchard Grass, 76.00-115.00; Clover, 80.00; Straw, 67.50-105.00; Oats, 2.85 bu.; Wood, 25.00-32.00 pick-up ld.

Green Dragon Hay

Ephrata, Pa.
Friday, Feb. 6, 1987

Report Supplied by Auction
233 loads.

Mixed Hay, 72.00-150.00; Alfalfa, 71.00-188.00; Timothy, 77.00-128.00; Clover, 82.00-85.00; Orchard Grass, 90.00; Straw, 83.00-130.00; Corn, 57.00-67.00. Wood, 60.00 ld.; Oats, 1.80-2.10 bu.

Chambersburg Hay

Chambersburg, PA

Thursday, Feb. 12, 1987
Report Supplied by Auction

18 loads. Alfalfa, 2nd cutting, 94.00-116.00; Mixed Hay, 85.00-94.00; Straw Oats, 70.00-76.00; Wood, 30.00 ld.

King's Hay

Kirkwood, Pa.

Tuesday, Feb. 10, 1987
Report supplied by Auction

95 loads. Alfalfa, 76.00-163.00, 1 ld. round, wet bale, 53.00; Alfalfa Mix, 101.00-148.00; Mixed Hay, 87.00-146.00; Timothy and Timothy Mix, 99.00-116.00.

Clover and Clover Mix, 91.00-115.00; Grassy Mix Hay, 110.00-130.00; 31 loads Straw, Wheat and Barley, 101.00-114.00.

Oats and Rye Straw, 75.00-92.00; Bean Stalks, 78.00; Corn Fodder, 95.00; Ear Corn, 66.00; Firewood, 30.00 and 55.00 ld.

Dewart Hay

Dewart, PA.

Monday, Feb. 9, 1987

Report Supplied by Auction
31 loads Hay, 63.00-115.00; 4 loads Straw, 77.00-101.00; 24 loads Wood, 25.00-66.00 ld.; 3 loads Corn, 56.00-59.00.

LOUIS LYONS & SON

Consign your cattle and hogs, feeder pigs & calves to Louis Lyons & Son. They offer choice service, excellent sorting & marketing of your livestock.

Charles Diller, Manager
Phone 394-7915

Burnell Siegrist - Buyer & Seller
Phone 717-626-8653

Experienced Personnel

Immediate Weighing

48% Soybean Meal, **\$211.50**

Distillers Grains, **\$154.00**

Per Ton — Delivered
EVEN LOWER PRICES FOR LARGER QUANTITIES.

Buy up to 11 tons and save more! No extra charge to blend these ingredients

NOTE We can sell for less because we sell only to people who pay promptly

WALKER COMPANY

Gap, PA 17527

717-442-4169 (Collect)

NEW HOLLAND SALES STABLES, INC. - THE ACTION AUCTION

MONDAY

FAT HOGS



EARLY BIRD HOG SALE

7:30 AM
For Your Protection Your Hogs Must Be Identified

10:00 AM

HORSES MULES



11:00 AM



HAY STRAW GRAIN



1:30 PM BEEF SALE CALF, SHEEP, GOATS

WEDNESDAY

11:00 A.M.

DAIRY COWS



HEIFERS, BULLS

NEW HOLLAND SALES STABLES, Inc.

12 Miles East of Lancaster on Route 23, New Holland, Penna

The Action Auction
717-354-4341

Mgr - Abe Diffenbach - 717-393-4464
Norman Kolb - 717-397-5538

Field Representatives
Alan Diffenbach 717-656-9806
Luke Eberly 215-267-6608 - 738-1865

WEDNESDAY - 1:30 P.M. FEEDER PIG SALE



We endeavor to keep our barns cleaner than yours. State graded until 12 Noon

THURSDAY

10:00 AM

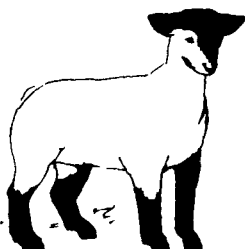
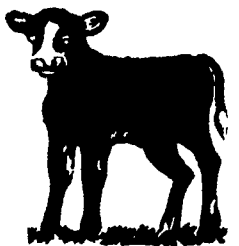
BULLS -



STEERS - BEEF COWS

2:30 P.M.

CALVES



SHEEP GOATS

**Market your livestock thru New Holland Sales, your neighbor does
Pick-up your check before you leave**