

Westminster Livestock Auction

Hagerstown, Md.
Tuesday, Feb. 10, 1987

Report supplied by auction

SLAUGHTER COWS: \$1 lower. Cows High Yield 42.00-43.00, 1 to 45.00; Utility 37.0-42.00; Canners 35.00-39.00; Shelly 34.00-Down. Bulls Good to 50.00; Standard 40.00-45.00. Fed Steers Steady; Low Choice 1100-1300 lbs. 56.00-58.00; Good 52.00-56.00. Holsteins Choice 54.75; Standard 40.00-45.00. Fed Heifers Good 800-900 lbs. 51.00-52.00. Veal Calves Good 200-300 lbs. 65.00-75.00; Stock/Thin 30.00-45.00; Killers 80-100 lb. 47.00-52.00; Weak/Rough 40.00-Down. Farm Calves Beef Cross 80-120 lbs. 52.00-66.00. Holstein Bulls 100-130 lbs. 80.00-106.00; 85-95 lbs. 55.00-97.00. Holstein Heifers 95-130 lbs. 64.00-80.00. Butcher Hogs Steady on good run. US #1&3 215-240 lb. 49.00-50.25; 195-210 lb. 47.00-49.00. Sows 300-500 lbs. 40.00-46.00; 500-600 lbs. 41.00-44.25. Boars 400-650 lbs. 34.50-35.25.

STOCK CATTLE: Strong demand, \$5 higher. Steers 400-600 lbs. Good 67.00-71.00. Heifers 300-500 lbs. Good 54.00-58.00; 500-700 lbs. Good 52.00-54.00, Medium 45.00-50.00; 700-950 lbs. Holstein 45.00-50.00. Bulls 400-600 lbs. Good 58.00-62.00, 1 950 lbs. 45.00. Lambs Steady. Few Choice 85-120 lbs. 74.00-80.00. Sheep 17 head; 24.00-31.00. Goats 38 head. Large 45.00-56.00; Medium 35.00-45.00; Small 20.00-35.00. Pigs & Shoats 120 head. By the head: 30-50 lbs. 30.00-44.00; 60-90 lbs. 48.00-50.00; 101 lbs. 59.00. By the lb.: 110-150 lbs. 40.00-49.00; 150-190 lbs. 41.00-45.00. Boars 150-200 lbs. 35.00-41.00; 200-325 lbs. 35.00-39.50.

Next Feeder Pig Sale Friday, Feb. 20.

Four States Livestock

Hagerstown, Md.
Wednesday, Feb. 11

Report supplied by Auction

SLAUGHTER: Fed Steers, \$1 lower; Choice to Prime 61.00-65.00; Good to Choice 55.00-60.00; Medium 48.00-54.00. Heifers Choice 55.00-60.00; Good 50.00-54.00; Medium 45.00-49.00. Cows Good run, steady prices; High Yield 40.00-42.00; Average 37.00-39.00; Big Middle 33.00-36.00; Fatty Herf. 32.00-35.00; Shelly 31.00 down. Fat bulls \$1 higher; Good 47.00-52.00; Medium 43.00-46.00.

VEAL CALVES: \$2 higher; Choice 75.00-80.00; Good 65.00-74.00; Medium 58.00-64.00; Farm Hfrs. 53.00-66.00; Farm Bulls 85.00-109.00; Light calves 44.00-52.00; Weak calves 43.00 down.

LAMBS: Steady; Choice & Good 76.00-79.00; Medium 69.00-75.00.

STEERS: \$1-\$2 higher; 300-550 lb. Choice 63.00-69.00; Good 56.00-62.00; Medium 50.00-55.00; Culls 49.00 down. Steers 600-850 lb. Choice 60.00-63.00; Good 55.00-59.00; Medium 50.00-54.00. Heifers (all weights) Choice 53.00-58.00; Good 48.00-52.00; Medium 42.00-

47.00. Open Dairy Hfrs. 55.00-59.00. Springing Heifers \$470.00-775.00.

PIGS, HD.: Light run, steady prices. 20-40 lb. 25.00-35.00. Shoats by lb. 42.00-49.00. Sl. Hogs steady prices; 210-240 lbs. 50.00-52.00; 260-280 lbs. 48.00-51.00; 190-205 lbs. 47.00-48.50; 290-325 lbs. 41.25-44.00. Sows 500-585 lbs. 41.75-47.00. Bulls Choice 59.00-63.50; Good 53.00-58.00; Medium 46.00-52.00.

Special Feeder Cattle Sales Mar. 11, 25; Apr. 8, 22; May 26.

Peoria Cattle

Thursday, Feb. 12, 1987
Report Supplied by USDA

Compared with last week slaughter steers sold steady to 1.00 lower, holstein steers 1.50 lower. Slaughter heifers closed mostly 1.00 to 2.00 lower. Cows closed 1.00 to 2.00 lower. Bulls 4.00 to 5.00 higher. Bulk of supply Monday with not enough receipts balance of week for a market test. Supply mainly good to average choice slaughter steers and heifers with 9% cows. Estimated receipts this week about 1300 a compared with actual receipts of 1471 a week ago and 1069 a year ago.

SLAUGHTER STEERS: Choice 2-4, mostly 1050-1300 lbs. 59.00-61.50, two part loads 61.75-62.00; 975-1050 lbs. 58.00-60.00. Mixed good and choice 2-3 1000-1200 lbs. 57.00-59.00. Good 2-3 900-1100 lbs. 55.00-58.00. Load good and choice 2-3 holsteins 1235 lbs. 53.00.

SLAUGHTER HEIFERS: Choice 2-4, mostly 950-1200 lbs. 57.50-58.50. Load 59.50-59.75; 875-950 lbs. 56.00-57.50. Mixed good and choice 2-3 900-1100 lbs. 55.00-57.00. Good 2-3 800-1000 lbs. 53.00-56.00.

COWS: Breaking utility 2-3 38.00-42.50. Cutter and boning utility 1-2 37.00-40.00, few high dressing 40.00-41.50. Canner and low cutter 34.00-37.00.

BULLS: YG 1-2 1500-2000 lbs. 49.00-53.00, few thin 45.00.

Valley Livestock

Athens, Pa.

Monday, Feb. 9, 1987

Report supplied by auction

Holstein Hfr. Calves to 94.00. Veal Calves 51.00-91.00. Vealer Bull Calves to 116.00. Slaughter Calves 53.00-64.00. Grassers & Feeders 32.50-43.00. Lambs 68.00-77.00. Sheep 32.00-40.00. Hogs, 200 to 250 46.00-49.00. Sows 32.50-39.50. Boars 35.50-38.50. Pigs each 19.50-40.00. Heifers 42.50-48.75. Bulls 38.50-50.25. Cows, utility 40.00-43.00. Cows, fat 39.00-40.50. Cows, medium 35.00-39.75. Cows, poor or small 24.00-36.75. Cattle Market steady. Calf Market steady. Ponies 70.00. Goats each 23.00-62.00. Feeder Sale 1st Monday of Each Month. Dairy Sale 3rd Thursday of Each Month.

Joliet Weekly

Thursday, Feb. 12, 1987

Report supplied by USDA

Sales this week 350; last week 518; a year ago 609. Trading slow.

Slaughter steers and heifers weak 57.50-60.00.

to 1.00 lower.

SLAUGHTER STEERS: Choice 2-4 1150-1250# 61.00-62.00; Mixed Good and Choice 2-3 1050-1250#

SLAUGHTER HEIFERS: Choice 2-4 1000-1100# 60.00-61.00; Mixed good and choice 2-3 900-1100# 56.00-59.00.

Green Dragon Livestock Sales



Location: Ephrata RD 4. 1 mile N. on North State St., Ephrata.

COWS COWS COWS SALE EVERY FRIDAY

Lots of good Northern Feeder & Stockers. Slaughter Cows - Bull Steer, Veal-lamb.

11:00 A.M.-Beef Sale 200-300 each week.

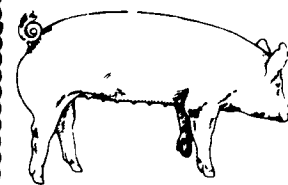
1:00 P.M.-Dairy Sale.

7:00 P.M.-Small Animal Sale.

For Special Sales and Herd Dispersals on farm or at our barn or other market information call: Office 717-733-2444, Home 717-838-4318.

WALTER H. RISSER, Proprietor

All out of state and new buyers must have cash or certified check or current letter of credit from bank.



EMERY'S BUYING STATION

OPEN TO RECEIVE YOUR MARKET HOGS

AT THE GREEN DRAGON MARKET RD 4, EPHRATA, PA 17522 1 MILE NORTH OF EPHRATA ON NORTH STATE STREET.

HOURS: MONDAY, TUESDAY, and WEDNESDAY 7:00 A.M. to 11:30 A.M.

215-458-5677 Residence

717-733-9648 Office

215-458-5677 Residence

717-733-9648 Office

YOU ARE PAID FOR YOUR HOGS IMMEDIATELY

Ken & Lois Emery, Proprietors

WHAT WILL TOMORROW BRING...

You have had few choices to sell your crop this year. However, one choice has stood above the rest. The auction warehouses have supported you - now it is your turn to support them.

Auction warehouses have worked hard to push price & create demand for your crop. Through phone calls, samples, and even purchasing tobacco - the auction warehouses have stood beside you to provide the best market available. The auction system proved to be the only market for you in December & January and will continue to be the strength of the marketing season.

If you want a competitive market that will work for you today, as well as, in the future - you must support the auction system now. If you contract your tobacco on the farm, you are eliminating your chances of a higher priced market. If you are promised to be "caught up" to the auction market - you know there is more money available for your crop.

Your decision in the coming weeks will determine what kind of tobacco marketing system you wish to have in the future. Are you willing to sell your entire crop on one man's opinion or do you want a competitive auction to maximize your receipts.

Due To An Apparant Increase In Demand The Following Sales Schedule Will Be Used For The Week Of February 16.

ATTENTION SALES SCHEDULE

Monday, 9 a.m. P.T.A. - Intercourse
1 p.m. P.T.A. - Quarryville

Tuesday, 9 a.m. - Garden Spot
1 p.m. - Paradise

Wednesday, 9 a.m. P.T.A. - Quarryville

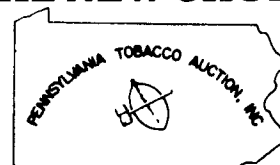
Thursday, 9 a.m. Garden Spot
1 p.m. Paradise

Keystone Tobacco Marketing Group

"THE NEW CHOICE"



717-687-0990 or 717-299-3001



717-768-7100 - Intercourse
717-786-8500 - Quarryville



Garden Spot Tobacco Auction 717-354-6934

LEESPORT FARMER'S MARKET, INC.

North end of Leesport, PA

Turn East off Route 61

"WHERE FRIENDS MEET"

BERKS COUNTY'S ONLY WEEKLY CATTLE & SWINE AUCTION - WEDNESDAY AT 1 P.M.



FARMER'S MARKET Every Wednesday, 10 A.M. TO 9 P.M.

Garden Fresh Fruits & Vegetables - Bakery Fresh Cakes, Pies and Buns - Butcher Fresh Meats & Cheese - Sporting Goods - Clothing - Furniture - Jewelry - Used Items & Collectibles.

PHONE: 215-926-1307

BILL WEIST & WOODY WEIST, MGRS.

