



We Ship UPS

MESSICK FARM EQUIPMENT, INC.

Rheems Exit, Rt. 283

Elizabethtown, PA

SERVING THE FARMER FOR 35 YEARS

It Pays To Buy From A Company Whose Business Is Sales AND SERVICE

(717) 367-1319

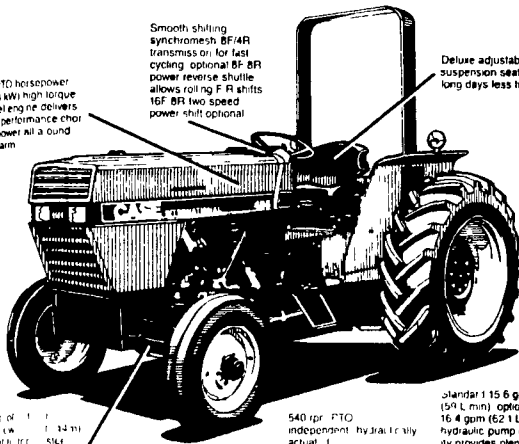
Toll Free In PA:

1-800-222-3373

Warren Spickler

Home: 653-4560

The New Case IH 485 Low Profile
Any Way You Look At It... You See
More Tractor



Smooth shifting
synchronesh BF4R
transmission for fast
cycling optional BF 8R
power reverse shuttle
allows rolling F R shifts
16F 8R two speed
power shift optional

Deluxe adjustable
suspension seat makes
long days less tiring

540 PTO
independent hydraulic
actual 1

Standard 11.5 Gpm
(59 L/min) optional
16.4 Gpm (62 L/min)
hydraulic pump capacity
provides plenty of
hydraulic power to
steering brakes
3 point hitch and
remotes

Ask us for a demonstration
Call For Prices

OPEN HOUSE

Feb. 18, 19, 20, 21

Look For Full Details In
Sun. C Of Next Week's Paper

Featuring The Following...

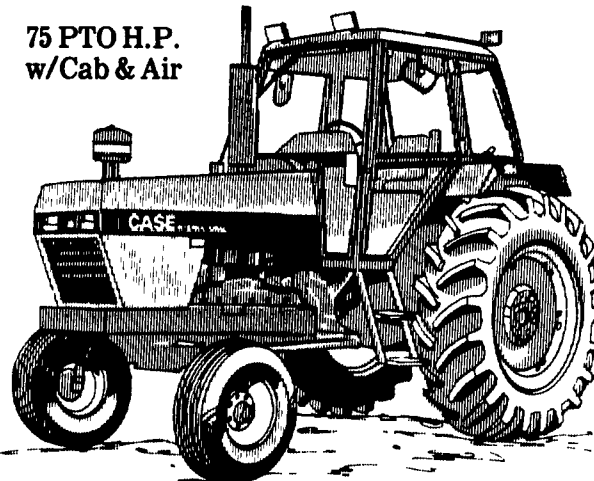
Wed., Feb. 18th, 12 Noon-
John Collins, Indianapolis,
Indiana - Discussing Nuts &
Bolts - Believe It! 89¢/lb.

Thurs., Feb. 19th, 11:00 A.M.
Our First—1987 Ag Review

Fri., Feb. 20th, 12 Noon-
Bill Shull, General Battery,
Toledo, Ohio - Excellent Speaker
Don't Miss It!

You've Never Seen So Much In A
Tractor Until You've Seen The
CASE IH 1494 TRACTOR

75 PTO H.P.
w/Cab & Air



Also In Stock:
Case IH 1594 4WD
w/Cab & Air

GOOD CLEAN USED EQUIPMENT

HAY & FORAGE

- IH 555 Forage Harvester w/Cornhead & Pickup
- NH 770 Harvester w/2 Row Cornhead & Pickup Attachment
- IH 56 Blower
- NH 320 Baler w/70 Thresher
- NH 258 Rake w/Dolly Wheels, Used 1 Season
- NH 880 w/Pickup Attachment
- IH #40 Shredder 4 Row
- NH 2 Row Snapper 30 Rows
- IH 37 Baler
- NH 269 Baler w/Thresher
- New Idea Wheel Rake
- IH 225 SP Mower Conditioner
- Gehl 99 Twin Blower

Excellent Condition

- NH 489 Haybine
- Woods Model 208 Rotary Cutter
- NH 67 Baler w/Chute
- MF Model 1560 Round Baler
- NH 24' Elevator
- Little Giant Elevator Like New

PLANTING & SEEDING

- IH 400 Planter, 6 Row, w/Dry Fert
- AC Grain Drill

MISC.

- Cab Year-A Round Fits 56 Series Tractors \$795
- 500 Gal PK Sprayer Trailing Model

TILLAGE

- 9 Tooth Glencoe Soil Saver
- JD KBA 10 Ft Transport Disk Harrow
- IH 370 Disk, 12 Ft
- IH 700 Plow, 4 Bottom 16" Semi-Mt
- Case 8 Ft Disc Harrow
- IH 710 5 Bottom Auto Reset Plow
- 12" Pittsburgh Disk Harrow

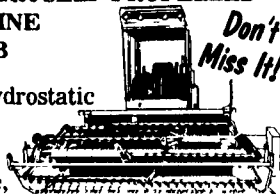
SPREADERS & GRINDER MIXERS

- NH 791 Hydraulic Headgate
- Tandem Axle Starline Tank Spreader, Excellent

NH 1495 SELF-PROPELLED

HAYBINE
W/CAB

Air, Hydrostatic Drive, Diesel Engine, Excellent Condition, 142 Hrs.



Don't Miss It!

SKID LOADERS

- NH 519 w/Hyd Endgate
- NI 10 Ton Tandem Axle, Hyd Gate Top Beater, Ex Cond
- NH 790 Spreader w/Hyd Endgate & Splash Guard 10 Ton Real Nice
- NH 352 Grinder Mixer
- NH L775 Skid Loader w/66" Bucket & Backhoe
- NH L775D Loader Deutz Diesel w/Bucket Only \$8,950
- Case 1830 Skid Loader, Good Condition Hydrostatic Drive

TRACTORS

- IH 184 Cub Lo-Boy w/Mower
- Farmall H w/Loader
- Farmall 350 Fast Hitch
- Farmall 300
- Case IH 684D 4WD, 162 Hrs.

- IH 464 Gas, 960 Hrs., Like New
- IH 966 w/Cab, Ex. Condition
- Cockshutt Tractor, Model 30, Nice
- IH 966 3 Pt. w/20.8x38 Rear Tires, Ex. Cond.

GLENCOE SOIL FINISHER

12 Ft.

Like New

It's A Disc, Field Cultivator & Finisher All

In One

\$3,995

ATTENTION FARMERS: If Parts Are Needed After Hours To Keep You Going, Call Jay Gainer, Our Parts Mgr. At Home 653-2238.



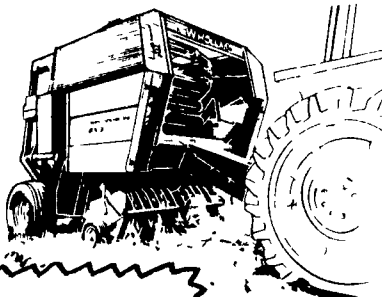
LOOK FOR OUR OPEN HOUSE

Food, Fun, Fellowship, Special Events, Bargains Galore!

N.H. 853 ROUND BALER

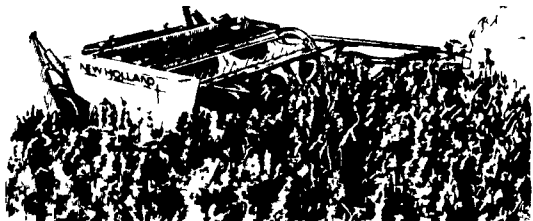
Featuring Exclusive Memory-Wrap®

Picture Perfect Bales



BUY NOW
CASH REBATE...\$1025

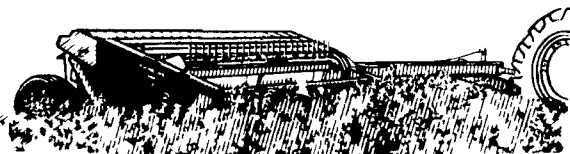
N.H. 472 MOWER-CONDITIONER



Seven-Foot Machine, No Plugging, Less Down Time.

CASH REBATE...\$635

N.H. 489 HAYBINE



Farmers' #1 Choice

CASH REBATE...\$730

Our Biggest & Best Sales Days/Open House Ever
MORE SAVINGS

Plus

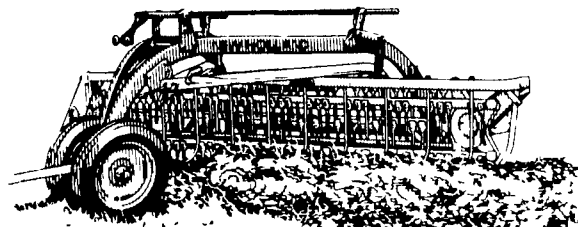
Featuring our 1st 1987 Ag Review

DON'T MISS IT

FEBRUARY 1987						
S	M	T	W	T	F	S
1	2	3	4	5	6	7
8	9	10	11	12	13	14
15	16	17	18	19	20	21
22	23	24	25	26	27	28
-	-	-	-	-	-	-

N.H. 256 RAKE

The Leader In Performance



CASH REBATE...\$225

NH MODEL 304

The side-delivery manure spreader that does it all



The new Model 304 side-delivery slurry or pen manure spreader-clean hauling and fast, efficient unloading. And the "304" is built for years of reliable service

CASH REBATE...\$325

GUARANTEED USED EQUIPMENT

Like New, Selling At Wholesale Prices

- NH 1495 S.P. Haybine w/Cab, Air, Diesel Engine, Hyd. Drive, Only 161 Hrs
- NH 326 Baler w/70 Thresher, Hydroformatic Bale Tension
- NH 276 Baler & Thresher
- NH 791 Spreader w/Hyd. Endgate
- NH 258 Rake w/Dolly Wheels
- NH 489 Haybine
- N.I. Spreader, 10 Ton, Tandem Axle, Hydraulic Endgate, Top Beater
- N.H. L775 Skid Steer Loaders (One Gas, One Diesel)
- NH 1495 S.P. Haybine, Cab & Air, 12 Ft. Head, \$18,500

MESSICK FARM EQUIPMENT, INC.

RHEEMS EXIT — RT. 283, ELIZABETHTOWN, PA

PHONE: 717-367-1319, 653-8867

TOLL FREE IN PA. 1-800-222-3373

WARREN SPICKLER — HOME 653-4560

★ WE SHIP UPS

