

THE OLD FARMER'S ALMANAC

FEB. 9-15, 1987

By now you're used to winter's abuse.

Abraham Lincoln born in Hardin Co. Ky., Feb. 12, 1809. National Association for the Advancement of Colored People established Feb. 12, 1909. Average length of days for the week 10 hours, 27 minutes. Boston Latin School founded Feb. 13, 1635. Full moon Feb. 13 (Fri). St. Valentine's Day Feb. 14. Lovers, travelers, and poets will all give money to be heard.



Ask the Old Farmer. When I was a child we had a product that was used to fill scratches on wooden surfaces. A putty knife was heated, then touched to this object, which looked like a caramel stick. Can you tell me if it is still available? P.B. Escoheag, R.I.
What you're talking about is stick shellac, which comes in different colors for different woods. You can use a soldering iron to melt it into a scratch or use a knife as you describe. Woodcraft supply stores usually still carry it.

Home Hints: Lightly sandpaper the soles of new shoes to make them less slippery.

OLD FARMER'S WEATHER FORECAST

New England: Week begins clear and cold, midweek turning cold with light snow, end of week snowstorm.
Greater New York-New Jersey: Week begins sunny and mild, midweek cloudy and cold, end of week snowstorm.
Middle Atlantic Coastal: Week begins sunny and warm, midweek cloudy and cold, end of week showers possible with cold temperatures.
Southwest Desert: Week begins sunny and pleasant, midweek rainy, end of week clear and cold.
Pacific Northwest: Week begins with rain, midweek clear and mild, end of week rain, sunny north.
California: Beginning of week clear and warm, midweek rainy and cold, end of week sunny and mild.

(All Rights Reserved Yankee Publishing Incorporated Dublin, NH 03444)

Carlisle Livestock

Carlisle, Pa.

Tuesday, Feb. 3, 1987

Report Supplied by Auction

CATTLE: Steers: Strong demand! Fully Steady. Low Choice 59.50-61.50; Good 54.00-59.00; Medium 47.50-53.50; Good & Choice Holsteins 51.00-54.25; Medium Holsteins 42.50-47.50. Heifers: Very Active! 2.00 Higher. Choice 60.00-63.00; Medium 46.75-50.00; Good 52.50-57.75; Holsteins to 57.50. Cows: Strong Demand! 1.00 Higher On Good Run. High Yield 44.00-47.00; Good 40.00-43.85; Big Middle 37.00-42.60; Shelly 36.00 & Down. FAT Bulls: 1.00 Higher On Good Run. Good 49.50-53.50; Medium 42.00-48.00.

FEEDER CATTLE: Feeder Steers (400-750 lb.) Demand Stronger! Choice 60.00-67.00; Medium 51.00-54.00; Good 55.00-59.00. Feeder Bulls (all weights) Very Active. Choice 64.00-75.00; Medium 48.00-54.00; Good 55.50-59.00. Feeder Heifers (all weights) Active 1.00 Higher. Choice 51.00-55.50; Medium 43.00-46.00; Good 47.00-50.00.

VEAL CALVES: Choice 80.00-101.00; Medium 50.00-64.00; Farm Bulls 80.00-106.00; Good 65.00-79.00; Light 45.00-49.00, Weak 44.00

& Down; Farm Heifers To 82.00.

HOGS: Barrows & Gilts 1.00 Higher on Good Run. (US No. 1-3) 210-250 lbs. 50.25-52.25; 2&3's (all weights) 42.25-48.00.

SOWS: Heavy 1.00 higher, Light 4.00 lower. Over 450 lb. 42.25-44.25; under 450 41.50-45.00; 2&3's 35.25-40.00. Boars 30.00-35.00.

FEEDER PIGS (by the hd.) (15-20 lbs. 18.00-21.00); (30-35 lbs. 39.00-44.00); (40-55 lbs. 49.00-51.00); (60-80 lbs. 52.00-59.00).

SHEEP: Lambs: Strong Demand! 2.00 to 4.00 higher. Choice 93.00-99.00; Good 75.00-89.00; Medium 62.00-73.00. EWES: Mostly 32.00-34.00; Goats: (Lg) 50.00-60.00.

Sale every Tuesday evening beginning at 6:00 p.m. Pig Sale Fri. Feb. 13 1:30 p.m.

Next State Graded Feeder Pig Sale will be on Friday, Feb. 13th 1:30 p.m. (Grading 7:30 until 11:30 a.m.).

The First Special Spring Feeder Cattle sale will be on Tuesday, March 17th 7:00 p.m. If you have cattle for this sale we will be glad to advertise them for you in this report. Please let us know by the first of March.

Other Special Feeder Cattle Sales will be held on Tuesday, March 31, April 14, April 28 and May 12th. All these sales begin at 7:00 p.m.

The Easter Lamb & Goat sale

will be held on Friday, April 10th at 12:30 P.M. Rabbits and Poultry sale starts at 10:00 A.M. Gates open at 8:00 A.M.

Penns Valley Livestock

Centre Hall, Pa. Tuesday, Feb. 3

Report supplied by Auction
Beef Cows: Utility and Commercial 40.50-45.25; Cutters 37.50-39.75; Canners 34.00-36.75; Shells 31.25.

Heifers: Commercial 45.00-49.50.

Steers: Standard 42.50-51.00.

Bulls: Standard 44.50-46.50.

Feeder Cattle: 300-500 lbs. large frame 50.00-62.00; 300-500 lbs. small frame 44.00-53.00; 500-700 lbs. large frame 50.00-56.00; 500-700 lbs. small frame 45.00-50.00.

Veal Calves: Choice 78.00-91.00; Good 60.00-74.00; Standard 50.00-57.00; Utility 41.00-49.00.

Farm Calves: Bulls 85.00-110.00; Heifers 60.00-70.00.

Hogs: 51.00-53.50.

Sows: 42.50-43.75.

Boars: 35.25-37.00.

Shoats: 25-30 lbs. per head 17.00-24.00; 30-35 lbs. per head 25.00-32.00; 35-50 lbs. per head 33.00-40.00.

ATTENTION CATTLE PRODUCERS:

On Feb. 4, 1987 you could have guaranteed over \$60.00/cwt. for June delivery.

Would this price guarantee you a profit? If so, why speculate?!!

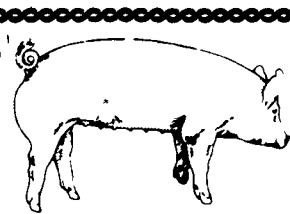
CALL US FOR UPDATED FORWARD CONTRACT QUOTES

717-761-2740
800-382-1356



CFS

PFA COMMODITY FUTURES SERVICE, INC.



EMERY'S BUYING STATION

OPEN TO RECEIVE YOUR MARKET HOGS

AT THE GREEN DRAGON MARKET RD 4, EPHRATA, PA 17522 1 MILE NORTH OF EPHRATA ON NORTH STATE STREET.

HOURS: MONDAY, TUESDAY, and WEDNESDAY 7:00 A.M. to 11:30 A.M.
215-458-5677 Residence
717-733-9648 Office

215-458-5677 Residence
717-733-9648 Office

YOU ARE PAID FOR YOUR HOGS IMMEDIATELY

Ken & Lois Emery, Proprietors

Green Dragon Livestock Sales

Location: Ephrata RD 4. 1 mile N. on North State St., Ephrata.

COWS COWS COWS SALE EVERY FRIDAY

Lots of good Northern Feeder & Stockers. Slaughter Cows - Bull Steer, Veal-lamb.

11:00 A.M.-Beef Sale 200-300 each week.
1:00 P.M.-Dairy Sale.
7:00 P.M.-Small Animal Sale.

For Special Sales and Herd Dispersals on farm or at our barn or other market information call: Office 717-733-2444, Home 717-838-4318.

WALTER H. RISSER, Proprietor

All out of state and new buyers must have cash or certified check or current letter of credit from bank.



Be Wise... Check our prices before you buy!!

SPRAY MATERIALS

We will deliver in the Delmarva area.

- | | | |
|------------------|------------|-------------|
| * ATRAZINE | * BLADEX | * EXTRAZINE |
| * DUAL | * BANVEL | * LORSBAN |
| * LASSO | * LOROX | * FURADAN |
| * SUTAZINE | * PARAQUAT | * COUNTER |
| * ROUND UP | * PRINCEP | * DYFONATE |
| * LASSO-ATRAZINE | | ETC. |

SAVE ON BULK HERBICIDES

- BICEP • LASSO-ATRAZINE • PROWL
- EXTRAZINE • DUAL • BLADEX

MELVIN R. WEAVER

2213 Leabrook Road, Lancaster, PA 17601
Ph: 717-569-6576 or 898-8354

ATTENTION TOBACCO FARMERS!!



Sale Times To Continue Each Tuesday at 1:00 P.M.
Next Sale - Tuesday, Feb. 10 - 1 P.M.
Sales to Continue Each Tuesday Thereafter At 1 P.M.

Receiving Tobacco Monday thru Fridays
7 a.m. to 5 p.m.

We strongly recommend that you farmers attend tobacco sales so that you can better judge what the market is doing. It's important for you to take time to market your tobacco after all the time you took to produce it.

For update on market, feel free to call, we will answer your questions the best we can.

Member:



Keystone Tobacco Marketing Group

"THE NEW CHOICE"

717-687-0990 or
717-299-3001

AY-000024-L

PARADISE TOBACCO SALES
Paradise, PA 17562