

**TRUCKS AND TRAILERS**

1986 Ford Bronco "Ed Bauer Edition", Power Windows, Tilt, Cruise, 351 HO, Looks, Runs And Drives Like New... <b>CALL FOR DETAILS</b>	1977 Jeep Wagoneer, V8, Auto, Power Steering, Power Brakes, Air, Cruise... <b>SPECIAL \$3,995</b>	1978 Ford F250 Trailer Special, 8 Ft. Box, V8, Auto., PS, PB, Air, One-Of-A-Kind... <b>\$6,495</b>	1978 Ford F150 Lariat Pickup, 4x4, V8, PS, Auto., Tilt, Cruise - Truck Is Perfect...With Cap... <b>\$7,495</b>
1985 Ford F250 4x4 Super Cab, XLT, 460V8, Bedliner, Power Windows, Tilt, Cruise, Stereo, Loaded... <b>\$14,995</b>	1985 Bronco XLT, 351 HO, Air, Auto., Tilt, Cruise, P. Windows, AM-FM Stereo Cassette... <b>\$14,995</b>	1982 Ford F250, V8, Auto, PS, PB, AM-FM, With Cap... <b>\$7,995</b>	1986 El Camino SS, V8, Auto., Air, Power Windows, Tilt, Cruise, AM-FM Stereo Cassette, 4,600 Miles... <b>\$12,995</b>
1979 Chevy K10, 4x4, Auto., PS, PB, V8, Dual Tanks, Runs on LP or Reg. Gas. Need Driving Range? - This Is It!!!!... <b>\$6,995</b>	1986 AMC Jeep Cherokee Pioneer, V6, Auto., PS, PB, Air, AM-FM Stereo Cassette, Roof Rack and Much More. 8,600 Orig. Miles... <b>\$14,995</b>	1985 Ford Bronco, 4x4, 2 Tone Paint, Auto., PS, PB, Air, AM-FM Stereo, Must See - Like New... <b>\$13,495</b>	1986 Ford F250, 2x4, XLT, Lariat, 460 V8, Auto., Air, Tilt, Cruise, Loaded... <b>MUST SEE</b>
1984 Chevy K10, 4x4, V8, Auto., PS, PB, Short Bed, Gold Beauty... <b>\$10,995</b>	<ul style="list-style-type: none"> <li>• 2x4's, 4x4's, Pickups, Vans, Suburbans, Broncos Blazers, Jeeps...From \$995!</li> <li>• 24 Month, 24,000 Mile Limited Warranty Available</li> <li>• Reconditioned, Inspected And Ready To Go!</li> <li>• Many More Not Listed - We May Have What You're Looking For - Call Our "800" Number</li> </ul>		1984 Ford Bronco, XLT, 351 H.O., Auto., Air, Power Windows, Tilt, Cruise, Loaded... <b>\$13,995</b>

6 Month, 6,000 Mile Limited Warranty On All Listed Vehicles \*

★ **100 USED TRUCKS IN STOCK AT ALL TIMES!** ★

\* Unless Specified Otherwise

**CALL TOLL FREE 1-800-362-7655**

OPEN 9 to 9 Mon to Fri.; 9 to 5 Sat.

**RHODES Oldsmobile**

SALES - SERVICE - LEASING

Rt 663 & Swamp Pike.

GILBERTSVILLE 215-327-3000

AREA'S LARGEST NON-FRANCHISED NEW & USED TRUCK DEALER



New 454 & 427 heavy duty Chev. truck motors complete. 717-762-7940

Rears for sale. Front rear 38-DS Eaton 433 ratio, front and back Rockwell SQHD, 4:44 ratio, 134 C White 411 ratio with housing if wanted or will separate 20 inch spoke and other miscellaneous truck parts. Call 717-862-3466.

Tandem cutoff rubber block suspension, 34,000, 4.11 Eaton rears, double frame; '72 Int. 1700 4x4, 345 V-8, cab/chassis, 26,000 gross, 23,050 miles. 717-924-3132.

Tool box & rack combination, for small pickup, like new. Half Price, \$550. 215-488-7155

TRUCK PARTS FOR SALE: Mack 237, Detroit 6V92T, V653, V671, 318, 671, 353, 371 Cummins 350 Big Cam. 270, 185, Super 250 plus others. Gas engines Ford, Chev., Int., GMC, Dodge & 200 Reo. Many other truck parts. WANTED: Trucks & Parts. Call 215-944-9871. Day or Nite.

Truck bed, cattle w/roof, Bellville, 12' wooden ramp back & sides, very good condition. 717-432-9704

Truck bed, 20' stake body w/4' sides, \$600. 301-273-7747

**1983 Timpfe Reefer**  
44'x13'4" stainless front and rear, aluminum buds, radials, slider, side door, Super NWD30, light weight, excellent condition.

**717-653-1085**  
**717-653-5935**

**28' aluminum dump trailer,**  
Trailco, 10.00x20 tires, very clean,  
**\$9,600**

**26' aluminum dump trailer,**  
Trailco, 10.00x20 tires, very clean,  
**\$7,300**

Both trailers in excellent condition,  
ready for road.  
**717-532-8363**

**TRAILERS FOR SALE**

Four 40' Flats  
Gindy 40x13.6 Van  
45x13.4 Open Top  
8500 Gal. Alum. Tank Trailer  
45x13.6 Insulated Storage Trailer  
Tire Chains to fit most big trucks

**KEEN'S**  
**717-626-5420**

**36 REAL ESTATE**

Wanted To Rent: Dairy Farm, preferably Southern Lancaster Co. 717-548-3355

FARM: 90A, approx. 60A tillable, ground includes ranch style house, barn, pig pen, chicken house, corn crib, wooded area. All buildings in good condition. Located along Rt. 104, 5 mis. off Rt. 11 & 15. 717-539-8950 or 539-8436.

FARM FOR SALE: 410 acres, 330 tillable acres, 2 houses, 2 barns, with a pond for recreation. 2 houses, 2 barns \$450,000. 80 cows, 40 heifers, equipment. Will separate land. If interested call 717-549-5755. Bradford Co.

Farm for sale by owner, Juniata Co. 94 Level Acres; 85 tillable; 54 free stalls, dairy or beef; 16x65 silo; 500 gal. bulk tank, 44' bunk feeder; 14 stall pipeline; 9 room house. Close to Mifflintown, near Rt. 322. 717-436-2255.

BERKS CO., PA: North Berks location, 76 acres w/65 acres tillable, large 5 bay bank barn, 3 bed, 2 bath home w/new kitchen, close to Interstate. \$149,000 J.W. Monaghan Realtors, Bill Mountz 215-775-2900

BRADFORD CO.: 450 ac. Dairy Farm. In profitable operation. Stocked & equip., \$380,000. Bare \$275,000. Millard Real Estate, New Albany, PA 717-363-2482.

Will work for investors in acquisitions of commercial corn belt farms. 20 Years experience representing major insurance company in agricultural investments. H B Omness, PO Box 603, Lima, Ohio 45802 419-991-8734

YATES COUNTY, NEW YORK Crop farm for sale North of Penn Yan 315 acres, remodeled farm house, barns. Terms available to qualified buyer. Owner wants action. \$229,000. 105A Century 21 Four Seasons, Penn Yan. 315-536-7456

For Sale: 96 acre beef, hog farm, farrowing house w/raised decks, barn to feed 50 steers, 12x55 silo. 7 room house, plus outbuildings. More Land For Rent Available. Snyder Co. 717-374-2250

FREE CATALOG! Describing numerous PA farms, camps, acreage, cottages, homes and businesses. Write Dept. LF, WEST REAL ESTATE AGENCY, INC., 5528 William Flynn Highway, Gibsonia, PA 15044. 412-443-1200, IN PA 1-800-922-1235.

Franklin County: 200 acres in Path Valley, 1/2 tillable, balance in woods and pasture, USDA corn, wheat, barley base. No buildings. Priced to sell by owner. 717-249-5005.

If you're looking for a farm, land or have any other real estate needs, you'll find what you want in the Real Estate classifieds. 717-394-3047 or 717-626-1164.

Northwest Pennsylvania, Meadville Woodcock Dam area. 163 acres wooded and open, water well in, all mineral rights. Owner financing. \$650/acre 216-442-8131.

Potter Co., Ulysses, PA. 290+ Acre dairy farm, modern 100 cow & free stall parlor complex, 3 Harvestore silos, 2 heifer barns, manure storage, large house, productive land. Buildings worth asking price. Call for details. 814-848-7478.

Repossessed homes from Gov't from \$1.00 plus repairs/taxes. Throughout PA/Nationwide! Also tax properties. 216-453-3000, Ext. H4827.

TOMPKINS COUNTY, NEW YORK. Free stall-parlor dairy for sale. Can milk up to 130, plus room for dry cows and YS. Turnkey operation. Nice 10RM house. Call owner at 607-838-3318 after 8PM.

Union Township, Snyder County, Pa, approx 45 miles North of Harrisburg, 115 + acres, 4 BR house, dairy bank barn with large milk-house, machine shed and outbuildings. Call 717-374-1657 or 717-374-6321

FOR RENT: Dairy Farm, Chester Co., 130 acres, house, milking parlor, free stalls, 3 silos, 1 is a Harvestore. 215-593-6315

FOR SALE: 100A farm in Adams Co. 70+ acres being farmed, stream, pasture, woodland, 6 mis. N. Gettysburg, 5 minutes from US 15. 3BR 1 1/2 baths, washhouse with shower. Barn, other outbuildings. Hard Road. 717-677-7057.

FOR SALE: Farm 200 acres, 60 tillable. Borders Susquehanna River. Home and large barn. Along Rt. 147 near Dalmatia, PA. North'd Co. \$750 per acre 717-692-3616.

FOR SALE IN LEWIS COUNTY, NY: 385 acre (180 tillable) dairy farm. Barn has 19 stations with 89 on pipeline. Three silos. Two bulk tanks. Village water. No house. \$102,000 firm. Call St. Lawrence National Bank 315-376-6556. Financing available to qualified buyer.

FOR SALE OR LEASE: Complete modern dairy in South Mississippi. 300 acres, 150 tillable. Flush system, free stalls, silo, double four side opener milking parlor, calf barns. Large southern home, completely modern. Year round grazing. Ready to operate. Plain people in area. 215-488-1020.

For Sale: 100 acres, Historic stone & frame house, barn & other outbuildings. Stream & water close to house, approx. 25A open land, balance wood, and pasture land. \$275,000. Franklin Co., Pa. Robert F. Crider, Realtor. 717-264-8528

For Sale: 51A farm, 40A tillable, 2 miles North of Martindale. For information call: 215-445-4893. Reuben Brubaker, RD3, Frys Rd, Ephrata, Pa. 17522 Lanc. Co.

For Sale: 72 acre Dairy Farm in Northern Bedford Co. House & modern barn w/31 tie stalls, pipeline milker, bulk tank, 3 silos, gutter cleaner & meadow w/stream. For more information call 814-793-2872

Farmland For Rent: 35-40 acres, Engleside area. Call 717-299-9646 after 6 p.m.

FOR RENT: 50 acre dairy farm, near Quarryville. House provided. 717-786-3494

**CHRISTIAN M. MOSEMAN**  
Real Estate Broker  
**UNION CO.**

120 Acre dairy, 2 1/2 story clean dwelling, 3 BRs, modern conveniences, new dairy barn, 52 tie stalls milking room for 10 w/pipeline, silo 16x45 w/unloader, storage shed 30x60, calf shed 20x30

**BERKS CO.**

113 Acre General Farm west of Womelsdorf along Rt 422 2 1/2 story limestone dwelling, two family with modern conveniences, bank barn 36x80, 12x60 stave silo, double implement shed corn crib, limestone soil, 95 acres tillable

**FRANKLIN CO.**

365 Acre General, Path Valley 4 BR dwelling, hot water coal & wood heat 200 acres tillable, 50 pasture 115 wooded

**LEBANON CO.**

60 Acre Hog & Dairy, log 2 story dwelling, stream in meadow

94 Acre Dairy, 2 1/2 story stone & log two family dwelling, 32 stanchions, 65 acres tillable, pasture with some woods

30 Acre farmette, Fredericksburg frame 2 1/2 story dwelling, 3 BRs, modern conveniences, frame barn block building 30x30, 10 acres wooded, 20 tillable, meadow w/stream quiet secluded area

79 Acre general farm N of Lebanon 5 Rooms on 1st floor w/bath 4 rooms on 2nd w/bath Downstairs like new condition, oil HW heat frame bank barn

152 Acre dairy 2 1/2 story dwelling 5 BRs 1 1/2 baths central oil heat 80 free stalls milking parlor 6 stall Herringbone 2 bulk feed bins 600 gal bulk milk tank garage & work shop, 100 acre tillable 52 pasture w/stream some wooded

**CUMBERLAND CO**

Near Shippensburg 112 acre dairy 2 1/2 story dwelling 4 BR w/modern conveniences oil & wood furnace new dairy barn 35 tie stalls gutter cleaner Berg silo with Clay unloader shop 26x40 garage 12x75 grain bin 30x40 heifer barn & wagon shed

160 Acre dairy 1 BR house fireplace insert for woodstove bank barn with dairy 12 Stanchions 20x70 silo with Jamesway unloader pipeline 10x50 silo w/Badger unloader 110 acre tillable 15 wood-pasture w/stream

182 General farm near Shippensburg 4 BR dwelling w/modern conveniences Large frame bank barn 176 acres tillable

**CHRISTIAN M. MOSEMAN**  
734 Main St., Akron, PA 17501

**PH: 717-859-1004**  
24 Hour Service

**ASSUMABLE 5% MORTGAGE**

200 acre "turn-key" dairy operation with 60x80 stanchion barn, 24x48 corn barn, 36x50 and a 36x60 implement barn; two pole barns, 32x48 and 24x24; attached to the main dairy barn, 12x35 and a 20x60 silo. 147 tillable productive loam soil. Large stone house with a new roof and kitchen. Located just outside of Mifflintown. Priced at just \$1,345.00 per acre. Call Jeff at 717-786-2131 or 717-548-2469.

**YORK COUNTY**

128 acre farm with 110 tillable acres Spring, pond, bank barn, implement shed with truck scales in very good condition. 2 1/2 story, 4 bedroom home with 2,000 square feet of living space at the end of a long paved lane. \$255,000. Call 717-786-2131.

**HIGH PROFIT FEEDS**

18 acres along State Route 624 offers top of the line machinery. Plenty of bulk storage & bagging equipment, trucks, and existing market. Currently operating below capacity Good existing accounts w/opportunity for growth. Convenient to Maryland & Pennsylvania. Call 717-464-4700.

**\$220,000**

for this long term poultry breeder. Contract yields \$25,000 per year or more and produce income exceeds \$20,000. All buildings are in very good condition. Call 717-464-4700.

**Century 21**  
**AMERICAN HERITAGE**

**717-786-2131**  
**717-464-4700**  
**717-393-9700**

**NORMAND ENTERPRISES, INC.**

P.O. Box 391, Biglerville, PA 17307

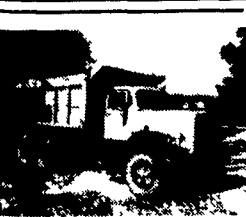
Days

**717-677-6148**

Eves. & Weekends:

**717-790-9108**

"USED TRUCK SALES & SERVICE"



**1967 WHITE TANDEM DUMP**

477 Gas, 5 & 3 Trans., P/S, 10x20, 14' Steel Dump, 58,000 GVW

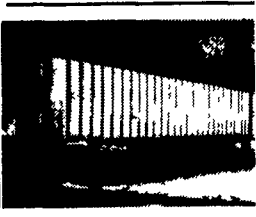
**\$4,900**



**1966 FORD C600 FLAT DUMP**

292 Gas, 5 & 2 Trans., 21,000 GVW, 14' Flat w/4' Sides, Runs Good!

**\$2,900**



**2 - 45' GINDY VAN TRAILERS**

Good Cond., Can Be Used For Storage Or Over-The-Road

**\$1,900 ea**