

Chester Co. DHIA

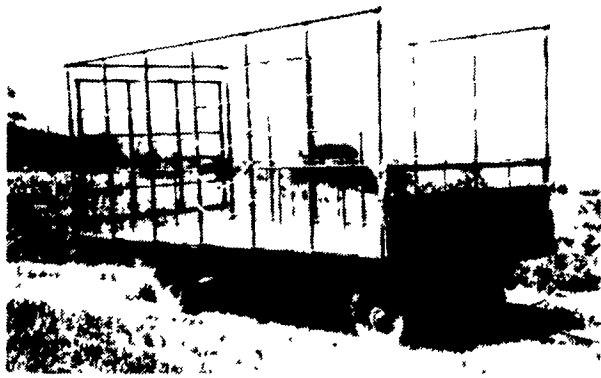
(Continued from Page E4)

Kulp Bros	3	6-10	300	22,767	4 3	986
277	3	3-1	305	21,857	4 1	893
1	3	5-3	291	18,644	4 6	858
334	3	7 1	305	23,416	4 2	975
David & Dawn Windle	3	6-4	305	20,438	4 8	971
Chief	3	8 4	305	27,150	3 6	969
Dennis Bush	3	4-3	292	21,809	4 0	867
281	3	5-9	305	27,402	3 5	962
Swan View	3	0-0	305	23,230	4 1	958
Joy	3	4-2	305	24,768	3 4	833
Darla	3	7 7	305	22,455	3 6	819
Round Top Farm	3	4-6	305	22,907	4 1	947
69	3	4-6	305	23,783	3 9	938
Jesse E Lair	3	4-6	305	26,290	3 2	840
Ell	3	2 2	305	20,319	4 1	832
Lissie	3	5-6	305	21,435	3 9	829
Petty	3	4 2	305	23,557	4 0	935
Walmore	3	8 6	305	23,910	3 9	928
286	3	3 4	305	20,416	4 3	874
Landis S Reid	3	3 4	305	20,426	4 2	864
55	3	6 2	305	24,031	3 6	859
65	3	5 4	305	23,896	3 9	921
133	3	4 11	305	23,744	3 9	915
25	3					
J Elvin Ranck	3					
Pretty	3					
John S Stoltzfus	3					
Rosita	3					
Lila 152	3					
Page 150	3					
Lorna 58	3					
Wilmer L Hostetter	3					
Venus	3					
Paul Martin	3					
50	3					

Vernon Guest & son	3	7-8	266	22,073	4 1	914
Clara	3	7-6	293	20,229	4 2	848
Effie	3					
Donald Hostetter Jr	3	3-5	305	24,252	3 8	913
Drumer 4	3	6-2	305	22,259	3 8	854
Supreme	3					
Arthur & Dwane Hershey	3	11 11	305	24,414	3 7	911
Alice 9	3					
Paul M Snader	3	5 0	305	22,023	4 1	906
140	3					
Mark & Melody Stoltzfus	3	3-1	305	23,737	3 8	904
Vickie	3	4-6	305	24,443	3 7	900
Franchise	3	3-4	305	21,348	4 1	876
Mary	3	4-1	305	22,084	3 9	853
Pearl	3					
High Point Acres	3	5-3	305	22,800	3 9	896
Lorraine	3					
Timbervue Farm	3	5-5	305	19,334	4 6	889
Pride 33	3					
Bright Meadows	3	3-0	305	24,807	3 6	886
Best	3	6-2	288	23,720	3 6	863
30	3	3-1	305	21,998	3 8	834
Sue	3	3-2	305	21,578	3 7	806
Styx	3	3-2	305	23,351	3 4	800
Step	3					
Dennis Bush	3	5 7	305	24,622	3 6	882
81	3					
Mrs. John B Hannum	3D	3-2	305	26,259	3 3	876
232	3	5-3	305	25,346	3 4	854
287	3					
Chris & Ches Stoltzfus	3	6-4	305	23,909	3 7	875
Melody	3	4 3	305	21,505	4 0	858
Hart	3					
Floyd Miller & Sons	3	4-10	294	21,020	4 2	874
41	3	5-4	305	21,297	4 1	869
16	3					
Harold R Kulp	3	6 3	305	21,623	4 0	871
Lira	3	5 2	305	22,027	3 7	806
Ajax	3					

Jade	3	4-2	305	20,865	3 8	802
Samuel K Stoltzfus	3	4-10	305	25,836	3 3	858
Easter	3	6-5	299	23,282	3 7	856
Benjamin K Kauffman	3	4-3	305	23,290	3 6	850
Orono	3	4-6	292	17,759	4 8	845
Donald L Kauffman	3	3-5	305	24,296	3 5	844
Luster	3	6-6	305	23,536	3 6	843
Elk Spring Farm	3	2-2	305	19,072	4 4	843
94	3	5-2	305	25,134	3 3	841
William L Stoltzfus	3	6-6	305	17,445	4 8	841
Reba	3	5-8	305	19,444	4 2	808
David K Stoltzfus	3	5 2	305	23,497	3 6	839
43	3	7 3	305	20,379	4 1	834
46	3	8-3	302	23,098	3 6	833
Norman Laffey	3	4-6	283	20,048	4 1	831
202	1	5-8	305	21,162	3 9	827
Lloyd Mast & Sons	3	5 11	305	21,846	3 8	826
212	1					
238	1					
Rothenberger Bros	3	6 6	305	27,214	3 0	829
19	3	6-0	305	20,559	4 0	829
George Strutynski	3	4 4	305	21,719	3 8	828
35	3					
Calvin & Tim Kurtz	3	3 11	305	22,600	3 7	826
3	3					
Ardrossan Farms	3	4 3	305	19,320	4 3	824
S-Ivana	1	3 1	305	23,956	3 4	820
P-Bunny	1	6 10	305	21,370	3 8	820
Jgladys	1	8 0	305	24,227	3 4	819
Robert E Pepple	3	4 5	305	23,681	3 5	819
86	3	7 6	305	22,231	3 7	813
Richard Hoover	3	6 5	305	24,505	3 3	812
81	3	4 5	305	22,930	3 5	812
Ken & Marilyn Umble	3	6 2	305	19,406	4 2	812
Regina	3	5 7	305	24,047	3 3	804
Roy & Ruth Ann Bender	3	4 7	305	22,671	3 5	803
Pepper	3	5 11	305	23,950	3 3	801
Landhope Farms	3					
342	3					
Daniel R Stoltzfus	3					
Ora	3					
Jonas Emanuel King	3					
Peg E	3					
J Elmer Lapp	3					
Naomi	3					
Sam & Marian Stoltzfus	3					
135	3					
Hoopes T Yarnall	3					
37G	3					
Leon D Kurtz	3					
E Holly	3					
David Bartram	3					
772	3					
Amos J Stoltzfus	3					
Penny	3					
Paul Smoker	3					
110	3					
Amos K Kauffman	3					
Barbie	3					
Misty Octoraro Farm	3					
Mindy	3					

BEST BUY of the YEAR



- 6" Steel Main Beam
- 2" Vertical Tubing Drilled so that the 1" Horizontal tubing extends Full Length of Wagon
- Front-Side and Rear Loading and Unloading
- 2x8 Pressure Treated Lumber Floor
- 2x6 Oak Cross Beams
- Beds are 8' wide, available in 16, 18 or 21' lengths. Racks are 90" high.
- NEW FEATURE: 6" Channel across back for pushing wagon without damaging bed.

FOR FURTHER INFORMATION, CALL YOUR LOCAL DEALER:

LOST CREEK IMPLEMENT
Oakland Mill, PA
717-463-2161

MELROSE FARM SERVICE
Greencastle, PA
717-597-3138

KELLER BROS.
Lebanon, PA
717-949-6501

DUNKLE & GREIB
Mill Hall, PA
717-726-3115

WALTER G. COALE, INC.
Churchville, MD
301-734-7722

TOBIAS EQUIPMENT CO., INC.
Halifax, PA
717-362-3132

NORTHEAST DISTRIBUTING
West Clifford, Pa.
717-222-9020

VALLEY IMPLEMENT SALES
Harrisonburg, VA
703-434-9961

CHAMBERSBURG FARM SUPPLY
Chambersburg, PA
717-264-3533

OXFORD GREENLINE, INC.
Oxford, PA
215-932-2753

PAUL SHOVER'S, INC.
Loysville, PA
717-789-3117

A.B.C. GROFF
New Holland, PA
717-354-4731

CARLISLE FARM SERVICE
Carlisle, PA
77-243-4419

CLARK'S FARM SUPPLY
Williamsport, PA
717-494-0060

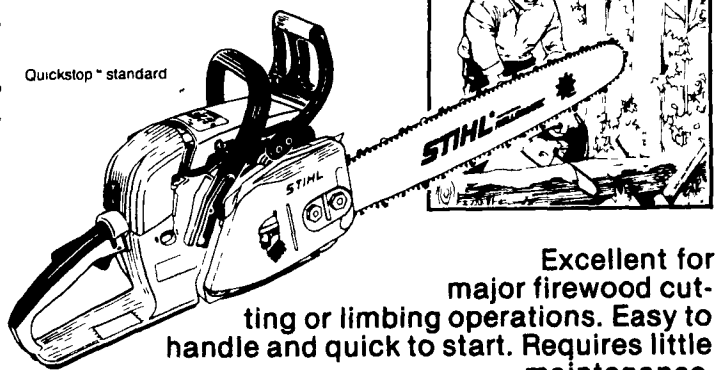
Manufactured By

CLW MANUFACTURING, INC.

R.D. #2, Box 8
Newburg, Pa. 17240
717-423-6794

MILK AMERICA'S HEALTH KICK

Put a Boss to Work for You!



Excellent for major firewood cutting or limbing operations. Easy to handle and quick to start. Requires little maintenance.

You can own the Wood Boss™ for the price of a regular saw. See it today.

028 WOOD BOSS 16" SAW

Reg. \$359.95 **SAVE \$60.00** **\$299.95**

LIMITED SUPPLY

A & B SALES & SERVICE GAP POWER EQUIPMENT
2 Miles South of Rt. 23 Along 772 Thru Monterey - RD 1 Ronks, PA
Corner of Rt. 30 & Rt. 897 Gap, PA
Phone 717-442-8970

HOLLINGER'S LAWN & GARDEN EQUIP.
1755 W Main St., (Loc. on Rt. 322) Ephrata, PA 717-738-1131

MARTIN HARDWARE & EQUIPMENT CO.
Rt. 501 1 1/2 Miles South of Schaefferstown, PA
Phone 717-949-6817

SHARTLESVILLE FARM SERVICE
RD #1 Box 1392 Hamburg, PA
Phone 215-488 1025

EBLING LAWN & GARDEN SERVICE
698 E Lincoln Ave Myerstown, PA 717 866-6720



NUMBER ONE WORLDWIDE