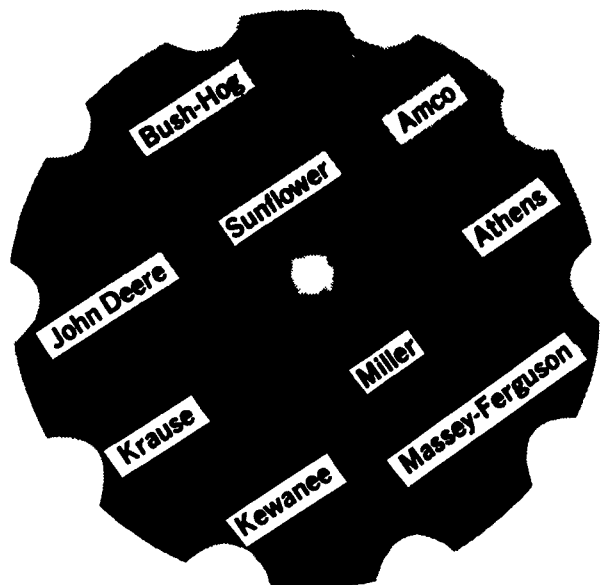
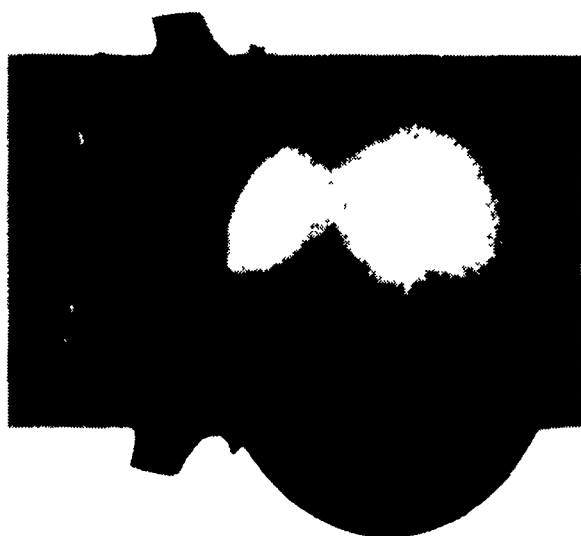


# THE SAVING PLACE

## DISK BLADES AND PARTS



**60% Tougher  
20% Longer  
Wearing**

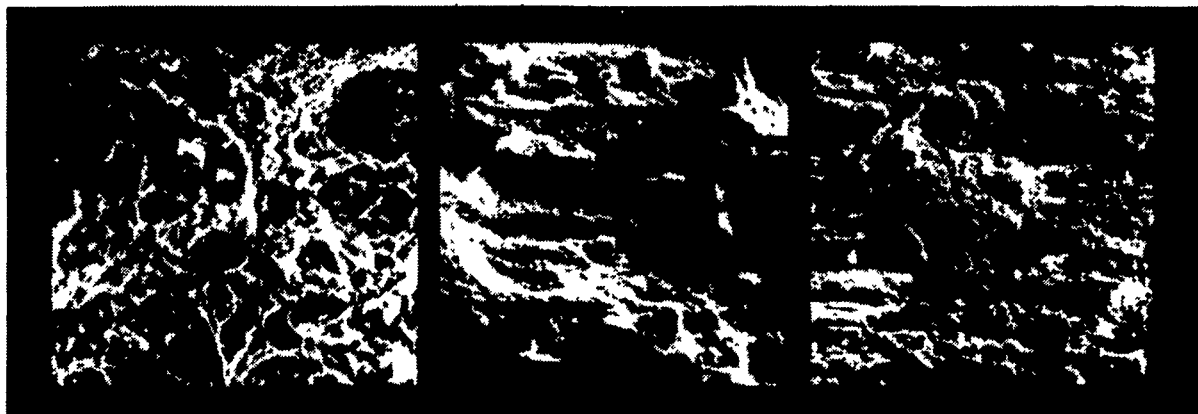


• 22", 6 Ga.

**\$16.78**

• 20", 7 Ga.

**\$13.14**



### Straight-rolled conventional steel blade

When the blade is straight-rolled, sulfides become elongated stringers. The blade tends to fracture easily when subjected to stress.

### Cross-rolled blades

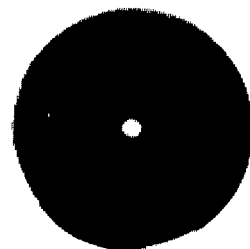
Cross-rolling flattens sulfide stringers in length and width in the same plane as the blade. This reduces strength throughout the steel. Blades tend to split edgewise like the two sheaves of a pulley.

### Earth Metal blades

Special additives keep sulfide inclusions in globular form during rolling. There are no sulfide stringers for fracture paths to follow. This virtually eliminates directional failures in Case International Earth Metal blades. Our 22-inch 5.0 mm blades average 11% thicker than the 22-inch, 4.5 mm disks sold by most competitors. Similar extra thickness for long wear life applies to other sizes as well.

• 24", 5/16-1 1/4 Rd.

**\$33.66**



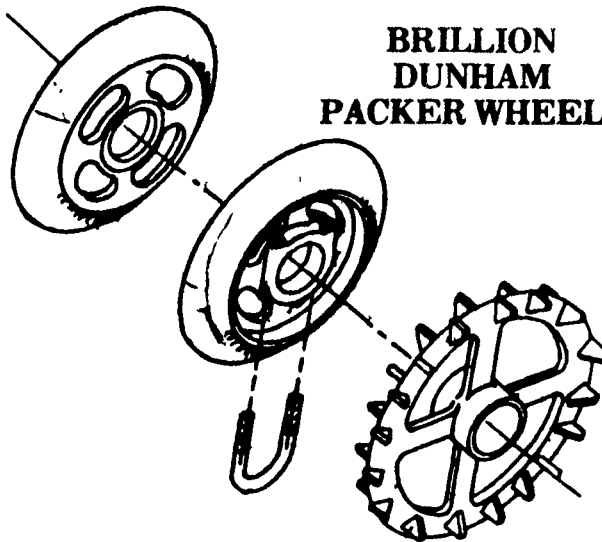
**20" PLOW  
COULTER**

**\$18.00**

**Rebuild  
Your  
Harrow  
NOW!**



**BRILLION  
DUNHAM  
PACKER WHEELS**

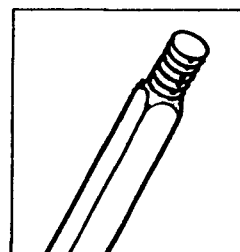
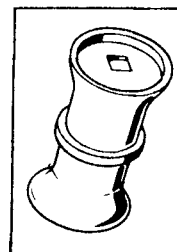


### DISK HARROW PARTS

**\$13.25**

BEARINGS

SPACERTUBES



SPOOLS

DISK AXLES

**CASE IH  
KRAUSE  
JOHN DEERE**