

**MAILBOX MARKET WANTED**

Clean milk cans and milk can cooler. 717-653-8247.  
 Hesston used 5530 round baler Cash buyer for right price Susq. Co. After 9PM, 717-278-2535.  
 Mennonite carriage, two seated, good condition. Also pony harness. 717-354-9357 or 354-5691.  
 Tillable acreage to rent in or near Myerstown area. Lebanon Co 717-866-4107  
 Landscaping attachment for tractor, 3PTH, preferably Gill or similar Model 72". Lanc Co. 717-627-2864.  
 Experienced assistant farm manager seeking position on swine or beef operation available immediately. Centre Co. 814-355-0312.  
 GM 6.2 dsl. engine with or without turbo 400 trans., low miles. Monmouth Co., NJ. 609-259-7492.  
 Top beater 679 NH spreader. 717-354-7922.  
 Case 400 gas motor head. 215-598-7546. Bucks Co.

Old mason jars, crocks, kitchenware, farm tools, fire extinguishers, lightning rods, lanterns, etc. Henry Cross, Highway 79, Morganville, NJ. 07751.  
 Elec. motor, 5 h.p., 1750 RPM, single phase; 350 Chev. or GMC truck engine. 717-442-8822 Eves.  
 Steam traction engine, in running condition, for tractor collector in New Hampshire. Call or write: G. Carr, RD1, Box 547A, Northwood, NH. 03261 603-942-7773 Collect.  
 Australian Kelpie stock dog, any age from working background. New Castle Co. 302-836-1732 or 834-0802.  
 I want to buy old fabrics--wool, cotton, also old quilt patches. Box 21, Lititz, PA 17543. Lanc. Co. 717-626-7854.  
 Young farmer needs 30 holsteins to establish a herd April 1. Huntingdon Co. 814-669-4672 or 669-4672.  
 Old Toy Trains, any condition. Warren, NJ. After 7PM, 201-475-5901.

Chianina Bull Calves, unpolled, up to 9 months old. Gary Gaylord, Rt.1, Box 37A, Rensselaer Falls, NY. 13680.  
 1 acre residential building lot in Southeastern Berks Co. 215-327-1863  
 6.3 Chev. dsl. motor. Snyder Co. 717-658-7168  
 Local oats and orchard mixed hay for horses. Lanc. Co. 717-664-2187  
 Used truck transmission, any kind. Also go cart. Lanc. Co. 717-626-8912  
 Steel wheels for skid loader. Franklin Co. 717-532-3278  
 I need an old 977 Caterpillar for parts or a pump. Bucks Co. 215-536-3906 Eves. 215-536-4850 Days. Ask For Bob.  
 18 can SS milk cooler. Also good milk cans. Abie S. Renno, RD2, Box 304, Mifflintown, Pa. 17059.  
 Open buggy, in good condition. Isaac Z. King, Box 142, Rebersburg, Pa. 16872.  
 Used church benches, at least 14 1/2' long. 301-475-5171. No Sunday Calls.

AC 600 no-till corn planter, 4 or 2 row. Hunterdon Co., NJ, 201-735-8497.  
 Three point snow blower. Would prefer 8' or 9' double auger. Lanc. Co. 717-768-8586.  
 Bathtub 4 1/2' and 26" or smaller. Smaller than the standard size. Lanc. Co. 717-687-6906.  
 270 cal. rifle w/4x12 scope. Must be in good shape. Lanc. Co. 717-354-9939.  
 Chipper or chipper shredder, 3" chipping capacity. Berks Co. 215-562-3523.  
 8"x10' extension auger for NH grinder mixer. Carroll Co. 301-756-2087  
 Chains for 16.9x24, 13.6x28, tires 10x28, 4 ply, 16.9x24, 8 ply. Chester Co. 215-363-7355  
 Consignment items for Schuylkill Co. Fair Auction, Sat., March 14, 9 a.m. Rt. 61 Schuylkill Haven. Call Kutz Farm Equipment. 717-345-4882  
 3 pt., 6' disk for JD 40, good shape. York Co. 717-456-5858  
 Used stave silo, in good condition. Lanc. Co. 717-859-3228  
 AC D10 or D12, good condition. Also 3 pth snow blower. Sch. Co. 717-467-2609 after 6 p.m.  
 Full time work for semi truck w/40' flat trailer, will haul anywhere. Bedford Co. 814-623-5477

Old farm tractor and construction equip. sales literature; old equipment dealers' signs. Bruce Kibort, RD2, Box 79, Elmer, NJ 08318. 609-358-7468.  
 Livestock scale. John M. Heberling, Jefferson Co., 814-371-2289  
 K5 Int. and D30 Int. Fortson tractor w/tool box, fenders. 717-369-2216.  
 PTO assembly for Massey Harris Pony or Pacer MH Model 16. Dauphin Co. 717-599-5068.  
 Used shallow well jet pump with pressure tank. Lanc. Co. 717-656-9594.  
 Loading auger for 1150 IH grinder mixer or whole mixer for parts, auger must be in working condition. Lanc. Co. 215-445-5182.  
 Onan 2 cylinder gas engine equipped with battery starter, any condition. Berks Co. 215-987-6758.  
 Farmall A or SA for parts or use. Northumberland Co. Ask for Jake, 717-524-2473.  
 Tree Planter. Columbia Co. 717-458-4955.  
 Int. H or M, WF tractor in good condition; 110 or 115, 7' side mount mower. Mon. Co. 201-741-8109.  
 Salvaging old loghouses, large barns, farmhouses; from theatres, funeral homes, etc.; processing decorative architectural elements. Longanecker. 7-9PM, 717-334-0249.

New or used storm front market wagon, and/or spring wagon, state price and condition. All replies answered. T. Holliday, Rt. 4, Box 244, Waynesboro, TN 38485.  
 Old used pine lumber from barn, house, etc. Must be in good condition. No white paint. Lanc. Co. 215-445-6231.  
 Attic Flooring and Log Houses 717-626-4520  
 Walk in cooler or refrigerated truck body. Also looking for breeding age heifers. John L. Stoltzfus, Box 212-A, Atglen, Pa 19310.

For Rent: 50 acre farm, for cattle and hog fattening, silo and feeder. Mt. Joy Township, Pa. 717-626-5397  
 Will be at Elias Beilers Sale, Feb. 27th. Can bring special orders along. Will have some McCormick Deering parts there. Ben Kinsinger, RD1, Box 234A, Meyersdale, Pa. 15552.  
 Make It Milk! Support RCMA, use our stable, live in our house, large lawn & garden, silo too. Chester Co. 215-593-6390.  
 Lost 24" grinder mixer screen in New Holland area. 717-523-7331.  
 Horse collars repaired and sold. John S. Stoltzfus, Sr., Christiana, PA, Coopersville.  
 We adopt and/or buy exotic animals: Deer, Pygmy Goats, Elk, Buffalo, Leopards, Cougars, Peafowl, etc. Berks, 215-374-2114.

**MAILBOX MARKET NOTICE**

House For Rent: Beginning March 1st. No electricity. Apply to Reuben K. Lantz, 405 Musser School Rd., Gordonville, Pa. 17529. Lanc. Co.  
 At Stud: American Saddlebred, Vanity's Kalarama Rex, Proven Sire, \$500. Horses For Sale. Manor View Acres. 717-872-5321.  
 ATTENTION SPINNERS! Quality rambouillet fleeces available in March. Lanc. Co. 717-397-5005.  
 Chair caning done; pressed in and porch chairs. Half mile south Leamon Place, Rt. 30. David E. Fisher, 96 Quarry Rd., Paradise, PA 17562.

**CRANE FOR RENT**  
 Need A Lift? Try Us!

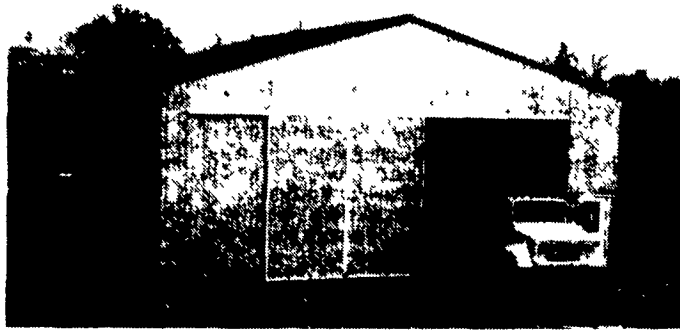


**12 1/2 Ton Crane For Rent w/Operator**  
 Do you have a small job that doesn't warrant a large crane?  
 Check Our Prices!

**COCALICO EQUIPMENT CO.**  
 Farm Drainage & Excavating  
 RD #4, Box 317 Denver, PA 17517  
 (215) 267-3808 (717) 738-3794

**STOLTZFUS BUILDERS**

Honey Brook, PA



**We Specialize In Pole And Frame Buildings**  
 CALL US FOR AN ESTIMATE

(215) 273-9812

(215) 273-3456

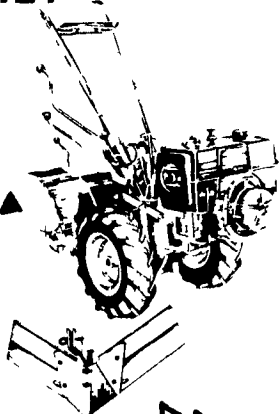
**Pre-Season TROY-BILT® ROTO TILLER**

**SALE!**

**BIG 10% DISCOUNT**

FREE Hiller-Furrower, too (\$59.00 retail value)

- Complete stock of all Models & Attachments!
- Generous Trade-In Allowances!
- Financing arranged!
- Free Demonstrations daily from (fill in)
- Factory-authorized Sales & Service!



Truckload Of 1987 Models Have Arrived

Your Authorized **TROY-BILT** Dealer



**Hollinger's**

Lawn & Garden Equipment

Financing Available



**THREE CONVENIENT LOCATIONS:**

- 1755 W. Main St., Ephrata, PA 17522 ..... (717) 738-1131 Located on Rt. 322
- 1515 Chocolate Ave., Hershey, PA 17033 ..... (717) 533-4060
- 2274 New Holland Pk., Lancaster, PA 17601 ..... (717) 656-2710

C.B. HOOBER & SON, INC.  
 Intercourse, PA  
 (717) 768-8231



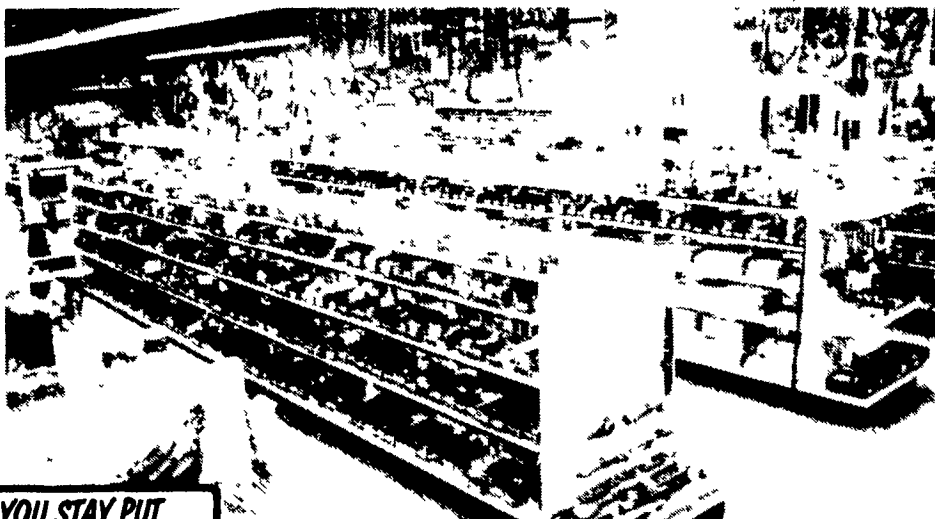
HOOBER EQUIPMENT, INC.  
 Middletown, DE  
 (302) 378-9555

TWO LOCATIONS

*The Saving Place*

**WE SHIP PARTS DAILY**

Via UPS - PPSH - BUS - AIR FREIGHT, ETC.



**YOU STAY PUT**

Pick Up Your Phone And Place Your Parts Order With Us

**CALL US...**  
*It Could Be We Have It*



Authorized UPS Station