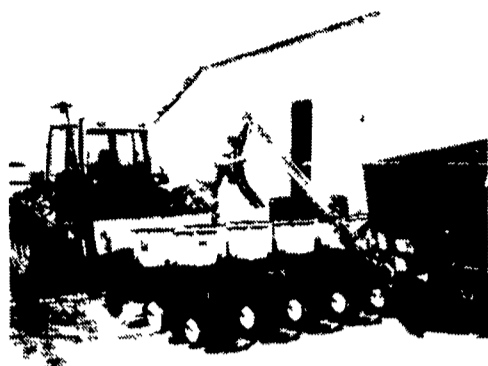


Winter Have You In A Deep Freeze? WARM UP WITH BINKLEY & HURST BROS., INC. DISCOUNT PRICES!

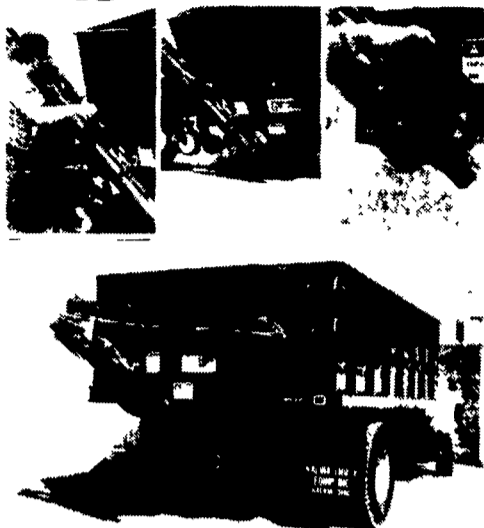
SAVE \$\$\$ By BUYING YOUR FERTILIZER IN BULK By Using This Attachment And Your Truck

HYDRAULIC TRUCK AUGER
12 Ft. Folding



\$645.00

OR PULL THIS GRAVITY BIN BEHIND



YOUR PICKUP WITH AN AUGER ATTACHMENT

To Handle Your
Fertilizer And
Small Grain,
The Easy Way!

\$517.00

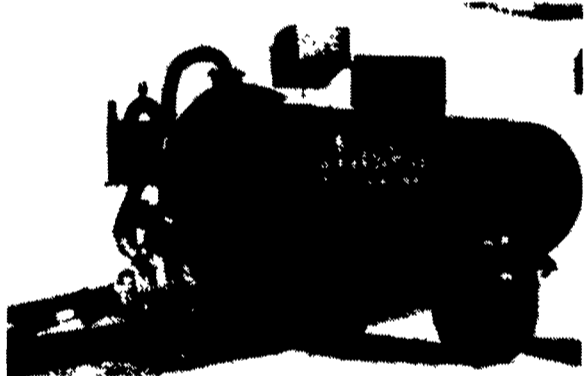


Filling Planter Hoppers

NOTICE

ALL BRAND NEW HUSKY 1500 GAL. VACUUM SPREADER

Features 5 Year
Unconditional
Axle Warranty

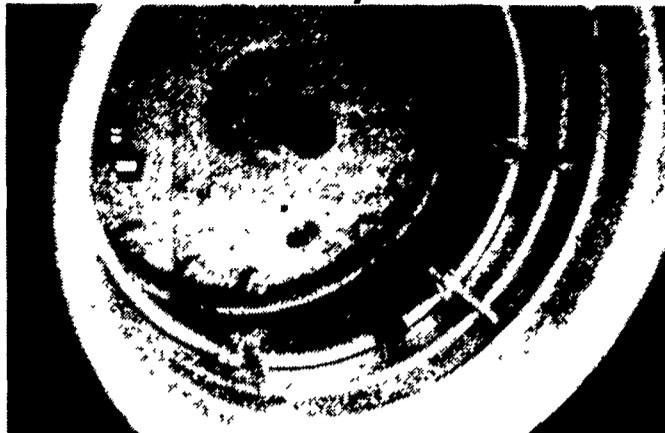


- 6 MM Tank w/Dished Ends
- New Tanker Lined Inside Against Rust w/Special Coating
- Fully Baffled
- Access Hatch
- Level Sight Gauge
- 6" Fill Port w/Brass Valve
- 6" Vac. Hose
- Secondary Moisture Trap
- Positive Float Shut-off

- Vacuum Pump Supplied w/High Heat Vanes
- Hydraulic Operated 6" Brass Valve For Rear Discharge
- Adjustable Spread Pattern

**SPECIAL
\$5,575**

CIRCOLOC®: The Open Center Dual



Unverferth's Circoloc system ties the dual wheel to your tractor's original wheel with snap-on simplicity, but incredible strength.

If you're like most farmers, your operations can benefit from a dual wheel system which easily converts back and forth from single wheels. For such flexibility, open center dual wheels are the answer.

And only one open center system combines such flexibility with functional stability: the world-wide patented Circoloc open center system.

The Circoloc concept not only allows for quick, easy installation and removal of dual wheels, but also provides a hook-up as solid and carefree as your original tractor wheel.

The secret to the Circoloc system is the effectiveness of the Circoloc clamp and ring assemblies. The ring is continuously welded onto the dual rim for a tight bond. The clamps then bite tightly onto the ring, and thread to hooks which run through eyelets on the original tractor wheel.

Circoloc open center systems are available in two types: snap-on or economy models. Snap-on duals are tightened by snapping down handles on the clamps. Economy Circoloc clamps are tightened by threading a nut onto the hook threads.



The secret to Circoloc is the effectiveness of the clamp and ring assemblies.

We Have Huge Inventory In Stock - Get Ready For Spring Now!

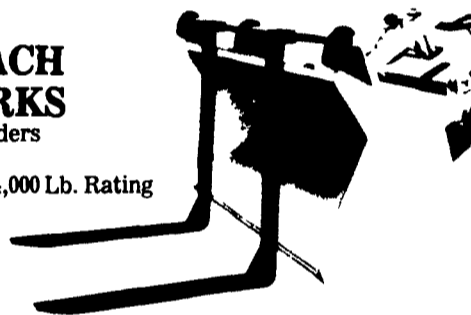
NEW QUICK-ATTACH PALLET FORKS

For Your Bucket Loaders

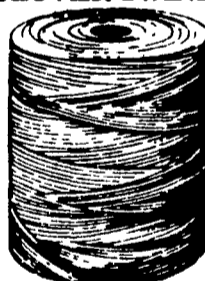
ONE SET IN STOCK

4,000 Lb. Rating

ONLY
\$585.00
Call Us For
Your Needs

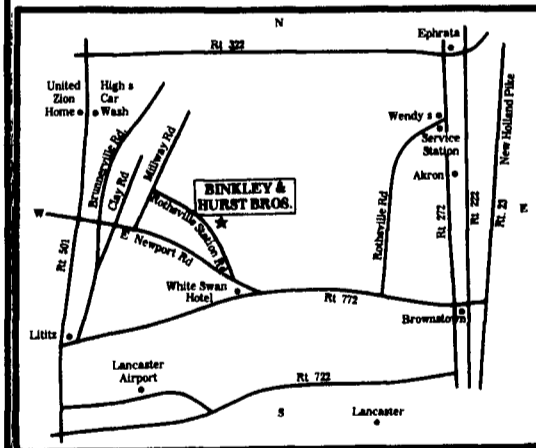


Just Arrived... CLOVER TWINE



• 7,200 • 9,000
• 10,000

Order Now At Our
Special Trailerload
Prices



SEE US FOR YOUR LATE MODEL CONSTRUCTION EQUIPMENT NEEDS - THE PRICES ARE RIGHT!

- Case 450 Crawler Loader, 1980, w/4-in-1 Bucket
- Case 855C Crawler Loader, 1984, w/4-in-1 Bucket
- (3) Case 580E Tractor Loader Backhoes, 1984 w/Open ROPS
- (2) Case 1845 B Skid Loaders, 1984
- John Deere 310 Tractor Loader Backhoe, 1985, w/Open ROPS
- Case 580 E Tractor Loader Backhoe w/Cab, Mech. Front Wheel Drive, 1984
- Case 1835 Skid Loader, Diesel
- Case 1690 Farm Tractor w/Power Shift, Low Hrs.
- Pettybone "Super 6" Forklift, All Wheel Drive
- (3) Ford F800 Diesel Box Dump Trucks, Single Axle
- D3 Cat 6-Way Dozer
- Case 1830 Gas Unloader, Late 1979 Model w/ROPS Cage, Approx. 1075 Hrs., Good Paint, UT 1205, Loaded \$5,960
- Save \$3,000 Case 586D Diesel Forklift w/21' Mast, 6,000 Lb. Capacity, Approx. 500 Hrs., Side Shifter, Like New, Was \$24,800
SPECIAL... You Haul Away For Only \$21,800
- 1980 Case Model 850B Crawler Loader, ROPS, Brush Sweeps w/G.P. Bucket w/Teeth, Good Paint, Good Pads, Good UC, Pins & Bushings - 50%, SN 7079648, Tag No. UT1193 \$27,900

- Case W11 Articulated Payloader w/Rops, Approx. 50 HP, 2402 Hrs. Only \$14,800
- Case 855C Crawler Loader w/4 In 1 Bucket, Low Hrs. \$34,800
- Case 450B Crawler w/4 in 1 Bucket, 1980 Model
- Case 580E, frops, Canopy, Tractor Loader Backhoe, 2 Wheel Drive, Low Hrs.
- IH 260A Loader Backhoe Tractor
- Case 580D All Wheel Drive Loader Backhoe, Low Hrs. . . Priced Right
- John Deere 455D Crawler Loader w/Low, Low Hrs.
- Case 580C, Cab, 1978 Model \$14,800
- John Deere 555A Crawler Loader w/Ripper
- 1984 1845 B Diesel Unloader..... Priced Right!
- Case 30" Trenching Bucket

**BINKLEY & HURST
BROS. INC.**

SALES PARTS SERVICE

133 Rothsville Station Rd.
Lititz, PA 17543
Located 1/2 Mile North of Rothsville
(717) 626-4705

Hours Mon-Fri 7 AM - 5 PM.
Sat 7 AM - 11:30 AM
Sun Closed - Lord's Day