



# Livestock market and auction news

## Shenandoah Valley Livestock

Harrisonburg, Va.  
Sat., Jan. 24, 1987

Report supplied by auction  
**FEEDER CATTLE TREND:**  
**STEERS:** M&L-1 300-500 lbs. 1 Lot at 62.50; 500-700 lbs. Few 58.75-63.00; 700-1000 lbs. Few 52.75-55.75.  
**HEIFERS:** M&L-1 300-500 lbs. Few 55.50-56.50; 500-700 lbs. Few

54.00-55.75; 700-1000 lbs. 1 Lot at 55.75.  
**STOCK COWS:** Baby Calves: Small & Medium 35.00-75.00, Large 95.00-114.00.  
**SLAUGHTER COWS TREND:** Utility & Commercial 2-4 37.00-42.00.  
**SLAUGHTER BULLS:** 1&2 1 at 48.75.  
**HOGS:** Sows 1-3 50.00.

## Virginia Cattle

Richmond, Virginia  
Northern, Va.  
Thurs., Jan. 22 to  
Wed., Jan. 23, 1987

Report Supplied by VDA  
No livestock sale due to snowstorm.

## Mercer Livestock Auction

Mercer, Pa.  
Tuesday, January 27, 1987

Report Supplied by PDA  
CATTLE 210...PDA. Compared with last Tuesday's market:

Slaughter Steers mostly steady; Cows .50 to \$1 higher. Choice sl. steers 56.00-61, one 61.80, Good 53-56.50, Standard 47-53.50, few Utility 41.00-45.00. Few Choice sl. heifers 55-56.50, Good 50-54.75, Standard 44.50-50, Utility 40.00-45.00. Breaking Utility and Commercial sl. cows 40.50-45.25, one 47.75, Cutter and Boning Utility 38.00-42, Canner and Low Cutter 35-38.25, Shells down to 28.00. Yield Grade No. 1 1100-2000 lbs. sl. bulls 45-51.50, No. 2 1000-1300 lbs. 41-44.50. Feeder Cattle: Few Medium Frame No. 1, 400-750 lbs. steers 49.00-58.00. Medium Frame No. 1, 270-640 lbs. heifers 46-54.50. Medium & Large Frame No. 1, 500-700 lbs. bulls 50.00-57.00.

51.00.  
**FEEDER CATTLE:** Steers Good 53.50-55.00, Standard 48.25-51.50; Bulls Good 47.50-52.25, Standard 45.50-48.00; Heifers Good 47.50-53.25, Standard 43.50-47.50.

**CALVES 389.** Prime 90.25-98.50; Choice 85.50-93.00; Good 75.50-82.50; Standard & Good 60.50-74.00; 90-110 lbs. 55.50-64.00; 65-90 lbs. 42.50-54.00; Holstein Bulls 90-125 lbs. 95.00-119.00; Holstein Heifers 90-120 lbs. 55.50-65.50.

**HOGS 106.** US No. 1-2 49.50-50.25; US No. 1-3 47.50-48.00.

**SOWS:** US No. 1-3 41.50-44.00. Boars 33.50-35.00.

**FEEDER PIGS 34.** US No. 1-3 20-35 lbs. 30.00-37.00 per head; No. 1-3 35-50 lbs. 38.00-43.00 per head.

**SHEEP 6.** Choice 74.50-81.50; Sl. Ewes 28.00-31.00; 1 Goats \$4.00 per head.

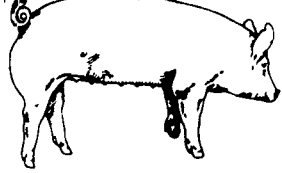
Hay 7 loads 71.00 to 116.00 per ton; Straw 3 loads 70.00 to 72.00 per ton.

## Valley Livestock

Athens, Pa.

Monday, Jan. 26, 1987

Report supplied by auction  
Holstein Hfr. Calves to 69.00.  
Veal Calves 70.00-79.00.  
Vealer Bull Calves 80.00-119.00.  
Slaughter Calves 50.00-60.00.  
Grassers & Feeders 34.00-45.00.  
Lambs 70.00-140.00.  
Sheep 25.00-35.00.  
Hogs, 200 to 250 45.00-52.00.  
Sows 36.00-45.00.  
Boars 34.00-42.00.  
Pigs each none.  
Heifers 36.00-45.50.  
Steers none.  
Steers, feeder 36.00-50.00.  
Bulls 44.00-51.00.  
Cows, utility 38.00-42.00, top 44.25.  
Cows, fat 38.00-43.00.  
Cows, medium 36.00-38.00.  
Cows, poor or small 28.00-35.00.  
Cattle Market steady.  
Calf Market steady.  
Horses each small 90.00.  
Ponies each small 80.00.  
Goats each 25.00-40.00.  
Remarks: Real active market.



## EMERY'S BUYING STATION

### OPEN TO RECEIVE YOUR MARKET HOGS

AT THE GREEN DRAGON MARKET  
RD 4, EPHRATA, PA 17522  
1 MILE NORTH OF EPHRATA  
ON NORTH STATE STREET.

HOURS: MONDAY, TUESDAY, and  
WEDNESDAY 7:00 A.M. to 11:30 A.M.  
215-458-5677 Residence  
717-733-9648 Office

215-458-5677 Residence  
717-733-9648 Office

YOU ARE PAID FOR YOUR  
HOGS IMMEDIATELY

Ken & Lois Emery, Proprietors

## Green Dragon Livestock Sales



Location: Ephrata RD 4. 1 mile N. on North State St., Ephrata.

### COWS COWS COWS SALE EVERY FRIDAY

Lots of good Northern Feeder & Stockers. Slaughter Cows - Bull Steer, Veal-lamb.

11:00 A.M. - Beef Sale 200-300 each week.  
1:00 P.M. - Dairy Sale.  
7:00 P.M. - Small Animal Sale.

For Special Sales and Herd Dispersals on farm or at our barn or other market information call: Office 717-733-2444, Home 717-838-4318.

**WALTER H. RISSER, Proprietor**

All out of state and new buyers must have cash or certified check or current letter of credit from bank.

## ATTENTION FARMERS

The New Way To Market Your Livestock

**HATFIELD PACKING CO. AND MOYER PACKING CO.**  
Will Receive Hogs Will Receive Cattle

At The

**BLAIR-BEDFORD BUYING STATION**  
RD 1 Martinsburg, Pa

**MONDAYS** - Hogs 8 AM to 11:30 AM  
Cattle & Calves 8 AM to 3 PM

**THURSDAYS** - Cattle & Calves  
8 AM to 3 PM

- No commission or yardage fees deducted from check
- Livestock weighed and paid for immediately
- You may call our office sale day for prices

**DALE R. HOOVER - Owner**

Business 814-793-3077  
Residence 814-793-2657



## ATTENTION FARMERS

**EVERY MONDAY HATFIELD PACKING CO. and MOYER PACKING CO.**

Will Receive Your Hogs and Cattle at the  
**DANVILLE LIVESTOCK MARKET**

RD 4, Danville, PA

- We will receive your hogs from 8 AM to 12 Noon every Monday. Your hogs will be weighed and paid for immediately.
- We will also accept your sows & boars.
- Your cattle will be received from 12:30 to 5 P.M. We will either pay you for your cattle immediately or you may sell them dressed weight.
- There will not be a commission or yardage fee deducted from your check.
- You may call our office Monday morning and we will be able to tell you the base price for hogs for the day.

**MELVIN M. LEHMAN - Owner**  
Danville Buying Station

Phone: 717-275-2880

## LIVESTOCK HAULING

**Dependable Service**  
6 Possum Bottom Tractors and Trailers  
Call Anytime

Vintage Sales Stables, Inc.  
L. Robert Frame Manager

Office 717-442-4181  
Office & Home: 215-458-5060  
Office & Home: 215-458-8518

## D & H Cattle Transport

Local and Long Distance Hauling  
With A 24 Ft Gooseneck Trailer

Call Don At  
717/284-2580  
Lancaster, Pa

## SWINE PRODUCTION SALES AND SERVICE

Complete Feeding Programs and Services

Feeding Programs to Meet Your Individual Needs

Computerized Record Keeping System

Providing Veterinarian Service

PA. Toll Free  
1-800-468-5524



419 W. High Street  
Elizabethtown, PA  
17022

Supplying Farm Fresh Feeder Pigs

Marketing and Hedging Services

Marketing of Genesis Breeding Stock

Developing Individual Financial Programs

Direct Dial  
(717) 367-1525

## ATTENTION CATTLE PRODUCERS:

On Jan. 28, 1987 you could have guaranteed \$60.00/cwt. for April delivery.

Would this price guarantee you a profit?  
If so, why speculate?!!

CALL US FOR UPDATED FORWARD CONTRACT QUOTES

717-761-2740

800-382-1356



**CFS**

PFA COMMODITY FUTURES SERVICE, INC.