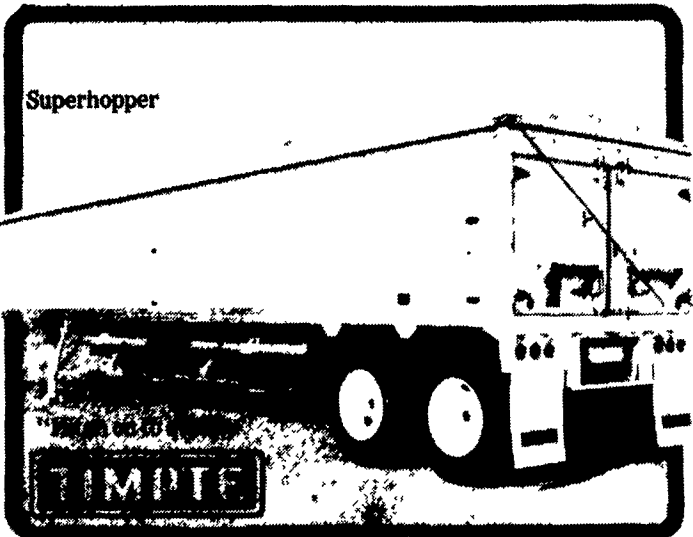




**BUY A 1987
TIMPTE
LIGHTWEIGHT
GRAIN HOPPER
NOW**



Got Grain? Then get the trailer that is Timpte tough... the Super Hopper. It's not only built to take it...it's also built to cut fuel costs. The Super Hopper is lightweight and aero-dynamically designed to reduce wind drag. When there's grain to be hauled, Timpte does the haulin' best and pulls a lot easier than the rest.

**New
Timpte,
42'8" x 65" Sides,
Hopper Bottom
In
Stock**

USED HOPPERS FOR SALE

- 1984 w/42'x65" Sides, Steel Cressant Grain Hopper
- 1970 w/40'x48" Wood Sides, Trailmobile Level Floor

M.H. EBY, INC.
Box 127, Blue Ball, PA 17506 (717) 354-4971



**ALUMINUM
GRAIN BODIES**



Got Grain To Move? Considering A New Body To Move It? Why Not Check Out The Features Of An Eby "Built To Last" Grain Body. Then You Be The Judge. I Think You'll Agree With Hundreds Of Other Satisfied Owners, An Eby Body Is Not Just A Purchase, It's An Investment!

CHECK OUR FEATURES:

- **Weight-** 20-30% less than steel and wood construction
- **Maintenance-** aluminum construction won't rust, requires no painting
- **Durability-** built "Eby tough", heavy structurals, new aerodynamic side posts and aluminum floor and sides.

*If It's Aluminum
And Hauls Agriculture Products
It Must Be From Eby*

M.H. EBY, INC.
Box 127, Blue Ball, PA 17506 (717) 354-4971

35

**TRUCKS
AND
TRAILERS**

18' grain dump, white tilt cab, 33,000 GVW, air brakes. 717-546-8422.

1953 3/4 ton Willys pick-up truck w/7' snowplow, asking \$800. 7' Snowplow off farm tractor, has new edge, asking \$250. Chester Co. 215-469-9591.

1959 M.R.S. pulling tractor, 335 Cummins dsl., Allison auto. trans., 29.5x29 rear tires, was used to tow blimps for navy. Kept indoors, low hrs. Sell or trade. Service records available. Very powerful. 201-938-3342 after 6.

1962 Dodge 16' flatbed, 19,500 GVW, 50,000 original miles, \$1500, excellent condition, good rubber, good farm truck. Call 215-267-5400, 7 a.m. to 5 p.m.

1967 Diamond T dump truck, good shape, excellent backhoe truck. 301-658-6923 days, 301-836-9564 eves.

1968 Ford F-600, 5+2, with or without Omaha 20' body. Make good hay truck. 814-793-2339

1970 Int. tandem axle w/Prentice loader, rebuilt 270 Cummins engine, 22' bed. 215-255-4075.

WANTED: Late '70 Freightliner COE, cab or cab & chassis. Call after 9 a.m. 717-687-9077

WANTED: Used dump bodies: sizes 7x9, 7x10, 7x14 or 7x17 1/2. Fair to good condition. 717-273-7269 anytime.

Western Stow 1 ton roller, hydrostatic drive, excellent condition, \$2,000. 215-488-7155

Mark VII - Pickups - Broncos - Bronco II - Stake Body - Crew Cab -

SHEEHY FORD LINCOLN MERCURY INC.
For All Your Farming Transportation Needs Through The F800 Series

BRONCOS DIESEL PICKUPS CHASSIS CAB CARGO VANS 4x4 RANGERS PICKUPS
BRONCO II SUPER CAB CREW CAB STAKE BODY BOX VANS XLT CUSTOM VANS

SHEEHY HOTLINE 717-272-7671

Unless This Emblem Is On Your Car Or Truck You Probably Paid Too Much



9-9 Daily
9-5 Sat.
717-272-7671

SHEEHY LEBANON

Parts Dept. Open
Daily 8-5
Sat. 8-12
717-273-8168 *

20th & Cumberland St., Lebanon

FINANCING STARTING AT

3.9%

On Rangers & Bronco II's

Rebate\$ Up To **\$600⁰⁰**

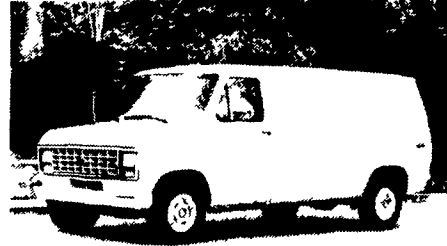
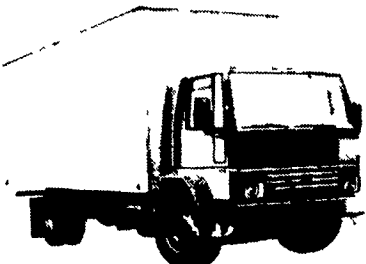
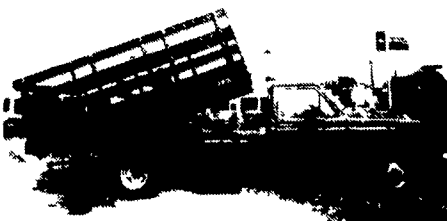
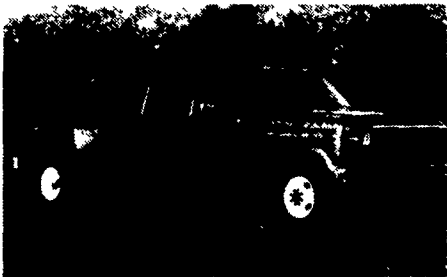
UP TO

3.9% + Up To \$600⁰⁰

Cash On

Escorts, Lynx, Tempo & Topaz

* Parts Hot Line 800-227-0272



Custom Vans

XLT

Grand Marquis

Marquis

Lynx

Topaz

Diesel Pickups

Mustang

T Bird

Tempo - Cougar - Continental - Town Car - 4x4 - Box Van - Rangers -