

## Public Auction Register

Closing Date Monday 5 00 P M  
of each week's publication

SAT. APR. 4 - Show 8:30AM; Auct. 5PM. Farm Toy Auction, Show & Sale at New Holland, PA. Fire Hall. Sponsored by: Liberty Fire Co. Dale Stoltzfus & Dave Nolt, Aucts.

SAT. APR. 4 - 9:30AM Farm Machinery Dispersal Sale of Farm Mach. 6 mis. SE of Stewartstown via Rt. 851 turn on Davis Rd. and proceed 1 1/2 mis. to sale; near New Park southern York Co., PA. By order of: Mr. & Mrs. James H. Bisker, Owners. Charles W. & David W. Shrodes, Aucts.

FRI. APR. 10 - RPM Farms Annual Spring Sale. Located Beavertown, PA. Snyder Co., U.S. Rt. 522.

FRI. APR. 10 - 7PM Horse Sale. New Holland Sales Stables, Inc., New Holland, PA. Abe Diefenbach, Manager.

SAT. APR. 11 - 9AM Wolgemuth Auct. Service Annual All Day Farm Eq. Sale. Tractors, Farm Eq., Tools, Lawn & Garden, anything sold on commission. Located 4 mis. W of Manheim, Lanc. Co., PA. Along Valley Rd., just off Hosler Rd., 10 min. from Rt. 283 at Manheim Exit. Bob Wolgemuth Sales Manager, 717-665-6684.

FRI. APR. 17 - 6:30PM Consignment Sale of Feeder Pigs & Feeder Cattle. Keister's Mid-

deburg Auct. Sales, Inc., Rt. 522, 3 mis. E. of Middleburg, PA, 5 mis. W. of Selinsgrove, PA. Don & Walt Keister, Owners.

SAT. APR. 18 - New Danville Mennonite School. J. Everett Kreider, Auct.

MON. AND TUES. APR. 20-21 - 2-Day Public Sale of Farm Equipment, Tractors, & Parts. Clyde E. Keener Estate. 1531 Manheim Pike, Lancaster, Pa. Wolgemuth & Rentzel Auctioneers.

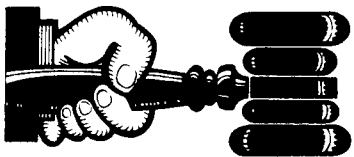
TUES. APR. 21 - 7PM Feeder Pig Show & Sale. New Holland Sales Stables, Inc., New Holland, PA. Abe Diefenbach, Manager.

FRI. APR. 24 - 9AM Farm Eq New Holland Sales Stables, Inc., New Holland, PA. Abe Diefenbach, Manager.

FRI. APR. 24 - 6PM Reg. and Grade Heifers, all ages At the Belleville Livestock Mkt., Belleville, PA.

### NOTICE

To assure that your Public Sale appears in the Public Sale Section we must have your advertisement by 4 P.M. Tuesday of each week's publication.



## AUCTIONEER'S DIRECTORY

General Auctioneers - Specializing In Liquidation of Personal Property, Equipment, Antiques, Real Estate

# Reist Auctioneers

Alfred G. Reist  
1050 Eden Road  
Lancaster,  
PA 17601

Licensed • Bonded  
Lancaster 717-569-2079  
Evenings/Lititz  
717-627-8008

## PROFESSIONAL Auctioneering

PAULE MARTIN JOHN D STAUFFER  
R.D. 1, Box 553 217 Andrea Dr.  
Stevens, Pa 17578 Lititz, Pa. 17543

Complete Auction Service We assist you and advise you from the planning stages of your auction to the completion of your auction

For A Consultation In Your Home Call  
Paul (717) 733 3511 — John (717) 665-5099  
Licensed and Bonded



KREIDER & KLINE AUCTIONEERS

COMPLETE PROFESSIONAL AUCTION SERVICE  
REAL ESTATE — FARMS & RESIDENTIAL  
PERSONAL PROPERTY — ANTIQUES —  
FARM STOCK SALES — LIQUIDATIONS

RANDAL V. KLINE  
AUCTIONEER REALTOR  
717 733 1006  
717 569 8701

LLOYD H. KREIDER  
AUCTIONEER  
717 786 3394

ROY E. GOOD, JR.  
RD 1 BOX 151 A  
DENVER PA 17517  
215 445 4309

SAT. APR. 25 - 8:30AM Tack; 10:30AM Horses. Keister's Middleburg Auct. Sales, Inc., Rt. 522, 3 mis. E. of Middleburg, PA, 5 mis. W. of Selinsgrove, PA. Don & Walt Keister, Owners.

SAT. APR. 25 - Consignment Sale of Farm Machinery & Lawn Eq. New Park, York Co. J. Everett Kreider, Auct.

SAT. APR. 25 - Geet Ministries Benefit Sale. Steve Petersheim & Steve Jr., Aucts.

MON. APR. 27 - Farmersville Eq. Co., Farmersville, PA, Annual Spring Consignment Auction. Paul E. Martin & John D. Stauffer, Aucts.

**SALE EVERY TUESDAY**  
Graded Sale  
1st Tuesday each month  
2 P.M.  
Horse Auction  
2nd Saturday each month  
1 P.M.

**FAUQUIER LIVESTOCK EXCHANGE**

Marshall, Va.  
703-364-1566

DEALER IN ALL KINDS OF LIVESTOCK

Also Crippled & Down Cattle

**MARLIN S. IRWIN**

Quarryville, PA  
PH 717-786-3016

## PUBLIC AUCTION

44 HIGHLY PRODUCTIVE HOLSTEIN COWS, BRED & OPEN HEIFERS, REG. BULL, FARM MACHINERY, HOUSEHOLD GOODS, 12x60 MOBILE HOME

TUESDAY, FEB. 17, 1987  
9 A.M.

Located From Strasburg traffic light go South on May Post Office Rd. 4 Miles, turn East on Springville Rd. Approx. 1 Mile to sale.

TERMS BY

DANIEL F. & HANNAH B. KING

Auctioneers Conducting Sale:  
Lloyd Kreider, AU000513L,  
Randal Kline, Roy Good, Gary Shirk  
717-786-3394

Kreider & Kline Auctioneers

## PUBLIC AUCTION

HEIFERS- MULES-  
MACHINERY- FEED  
FRIDAY, FEB., 6, 1987  
AT 10:00 A.M.

Located In Centre Co., 4 Miles East Of Rebersburg, Pa., Along Route 192.

6 MULES

Team bay mules 8 and 9 yrs. old, team bay mules 11 and 12 yrs. old, and team sorrels 11 and 12 yrs. old. Harness for 6 mules, collars, bridles, lines, etc.

27 GRADE HOLSTEIN HEIFERS

11 bred heifers well grown w/good size, 16 yearlings to started heifers. All raised on this farm. Sired by A.B.S. bulls and out of good herd which is averaging over 60 lbs. per day at the present time.

T.B. AND BANGS TESTED.

DAIRY EQUIPMENT AND FEED

Lister 12 H.P. dsl. engine, 3 H.P. compressor, Milkeper 500 gals. tank, gas water heater, 3 Westfalia milker units (will be used one week after sale), Bender auto. washer, double S.S. tubs, 2 S.S. strainers, etc., round metal hay feeder, 2500 bales hay, 18x30 ft. corn silage and approx. 3,000 bu. ear corn.

FARM MACHINERY

N.I. no. 206 manure spreader, 2 auto. turn carts, N.I. no. 323 corn picker, N.H. 268 hayliner baler w/motor, N.H. mower and N.I. crimper combination, A.C. power unit w/clutch, N.I. rola bar rake, Pequea tedder, Mulkey 30 ft. elevator, 2 flat wagons, WhiteHorse 2-12 in. hyd. reset plow used 1 yr., Smoker corn stalk chopper, single and double trees, misc. farm items and wagon items.

Terms- CASH

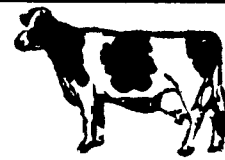
**AMOS AND REBECCA KING**

Star Route  
Rebersburg, Pa.  
Mark Glick- Auctioneer  
Reedsville, Pa.  
AU-349-L

LUNCH

## Dairy and Livestock Sales

**NEW HOLLAND SALES STABLES, INC.**



Located 12 Miles East of Lancaster, Pa., just off Rt. 23, New Holland.

**SPECIAL DAIRY SALE CONSIGNMENTS**  
For  
**WEDNESDAY, FEBRUARY 4th, 1987**  
Heifer Sale Starts At 11:00 A.M.

1 LOAD PUREBRED AND GRADE CANADIAN COWS, FRESH AND SPRINGERS, CONSIGNED BY BRIAN DAWSON.

- 1 load fresh and springer cows consigned by Norman and David Kolb.
- 1 load fresh and springer cows consigned by Merle Brenneman.
- 1 load fresh and springer cows consigned by Marvin Eshleman.
- 1 load fresh and springer cows consigned by Raymond Smucker.
- 1 load fresh and springer cows consigned by H.D. Matz.
- 1 load fresh cows consigned by Dale Hostetter.
- 1 load fresh cows consigned by Alfred Albright.

For More Information Contact:

Abe Diefenbach  
717-354-4341

Norman Kolb  
717-397-5538

## PUBLIC SALE

SATURDAY, FEB. 21, 1987

9:00 A.M.

Located 1 1/2 miles north of Quarryville, six miles south of Strasburg. Between Stoney Hill Road and Carmargo Road, along Stone Road, Eden Twp. Lanc. Co. Penna.

LIVESTOCK

42 HEAD OF HOLSTEIN DAIRY CATTLE  
#36 HEAD REG AND GRADE  
HOLSTEIN DAIRY COWS

Owner Sampler test 365 da. 14990+.

Several cows recently fresh, many close springers.

15 HEAD OF HOLSTEIN HEIFERS

From two months to breeding age.

30 day T.B. AND Blood test. Stock bull from registered animals.

One pair of 5 and 6 year old sorrel horses.

One pair of 6 and 7 year old Red Roan horses.

Two sorrel mares One black mule All Good Workers

FARM EQUIPMENT

New Holland #273 Baler; Stoltzfus 2-bottom 12" plow with Hyd. system; International #56 4-row corn planter with 12 volt Daytona Hyd System; New Idea #272 Cutditioner with 50 h.p. Leroy gas engine; New Idea Crimper with 4 cye. Wisconsin engine.

McD P.T.O. corn binder with loader; McD ground driven corn binder; McD #7 ensilage cutter in good condition; Campbell sprayer with 16 row boom; New Idea transplanter, in good condition.

McD #9 grass mower; New Idea side rake; Zimmerman steel wheel wagon and bed; New Idea steel wheel wagon and box; Two fore-trucks with auto-turn; John Deere 3-section spring harrow; New Holland #202 manure spreader; McD 28 side harrow; steel roller McD riding cultivator; Side loading tobacco ladders on gears.

Two wheel breaking cart; Minnich tobacco press; 3000 tobacco lath; tobacco shears and spears; log chains; forks; shovels; Eight sets of front gears; collars; lines; bridles; 3'x16' concrete pipe; 1,2,3,4,5,6,7, horse hitches.

50 TON OF EAR CORN---

100 TON OF CORN ENSILAGE

DAIRYING EQUIPMENT— Three Bou-matic milking units; Magnetic inflations Pulsation control units; Scheuter dumping station; Bender Washer.

L40 Lombardina Diesel; Winco 3000 Watt generator; Bou-matic Pump; Vacuum pump stainless steel twin tubs.

Two feed carts; 20 head-lock stauchions 100' of litter carrier track with switch.

Semen 1 Penn State Star; 1 Glen Valley Star; 3 Whittier Farms Apollo Rocket; 2 Ca-lil Standout Cavalier; 1 Zion View Amys Grand Fortune.

**LEVI S. AND ANNA MAE GLICK, Owners**

Sale at 9:00 A.M.

Diefenbach's Auctioneers 225L

LUNCH AVAILABLE