

Public Auction Register

Closing Date Monday 5 00 P M
 of each week's publication

SAT. MAR. 14 - 9:30AM
 Farm Machinery, Feed, Laying Hens, Antiques, Butchering Eq., Guns, Chester Co., PA. 2 mis. N. of Oxford. From Rt. 10 go W. on Union School Rd., next to Rt. 1. S. entrance, second farm on left. Chester & Iva Hawkins, Owners. Steve Peterheim & Steve, Jr. Aucts

SAT. MAR. 14 - 10:30AM
 1976 Chevy 3/4 ton truck w/8' Eby Cattle Bed, Farm Mach. HH. Take Rt. 222 through Quarryville past Presbyterian Home W. of cemetery along Scotland Rd. First big farm on right. By Clyde H. & Barbara M. Miller Kreider & Kline, Aucts.

SAT. MAR. 14 - 11AM
 Rising Sun, MD, Eastern Shore Show Case Registered Holstein Sale At Hunters Sale Barn. Bob Knutsen, Rising Sun, MD 21911.

SAT. MAR. 14 - 12 Noon
 Eastern National Heifer Calf Sale and PA "Angus On Parade" Sale. Ag Arena on the campus of PA State University, University Park, PA. Sponsored by: PA Angus Assoc. Col. Mike Jones & Col. Harry Bachman, Aucts.

SAT. MAR. 14 - 1PM Real Estate, Farm Machinery, Cattle, HH. Heart of Big Valley, Mifflin Co., Belleville area. Stephen W. & Bertha M. Zook, Owners. Daniel Zook, Mark Yoder, Aucts.

SAT. MAR. 14 - 2PM Real Estate. Located Water St. in Goodville, PA. George M. Reed, Owner. Nevin Martin & Lewis Groff, Aucts.

SAT. MAR. 14 - 2PM 76 Acre Farm. Located along Orchard Rd. in Brecknock Twp., Lanc. Co., PA. From Turnpike Exit 21 take Rt. 272 N. to Rt. 897, go S. 2nd road left, Gehmans School Rd., at Orchard Rd. turn right, 1st farm on left. Amzie L. & Suzanna Zimmerman, Owners. LeRoy S. Horst, Auct.

MON. MAR. 16 - Farm Eq. & Tools. Along Rt. 272 Adamstown, PA. For:

Willie D. Stober and Sons, Paul E. Martin & John D. Stauffer, Aucts.

MON. MAR. 16 - Farm Eq. Along Rt. 441, Marietta, PA. By: Robert Mowrer, Harold Shaffner, Auct.

TUES. MAR. 17 - York Co. Fairgrounds, York, PA. York-Adams Co. Calarama Sale. Sponsored by York & Adams Co. Holstein Club, Kling's Auct. Serv.

Dairy and Livestock Sales

THE INTERSTATE MILK PRODUCERS SALE

that was cancelled from January 23, rescheduled for **FEBRUARY 6** at the Solanco Fair Building.

Auctioneers: Kreider, Bucher & Heaps. AU 000512-L

250-350 HEAD SPECIAL HORSE SALE WORK HORSES-MULES & DRIVING HORSES

FRIDAY, FEBRUARY 6, 1987

AT NEW HOLLAND SALES STABLES, INC.

12 Miles East of Lancaster, Pa. just off Rt. 23, New Holland, Pa. Tack 9:00 A.M. Sale 10:00 A.M.



- * 2 Load Work Horses, Mules, and Driving Horses consigned by Ward Wright.
- * 1 Load Work and Driving Horses consigned by Bub Leonard.
- * 1 Load Driving Horses consigned by Clayton Waterbury.
- * 1 Load Driving Horses consigned by Jonas Beiler.
- * 1 Load Driving Horses consigned by Reuben G. Stoltzfus.
- * 1 Load Driving Horses consigned by Elam B. Stoltzfus.
- * 1 Load Saddlebred Driving Horses consigned by Christ Stoltzfus.
- * 2 Loads Top Mules and Work Horses consigned by Norman Kolb.

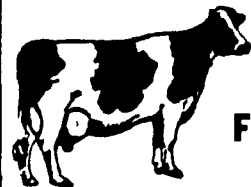
Plus many more consignments by sale time.

For more information contact:

Abe Diffenbach, Mgr. 717-354-4341 Norman Kolb 717-397-5538

NEXT HORSE SALE FEB. 20, 10:00 A.M.

SHORT NOTICE DAIRY CATTLE SALE



FRIDAY, FEBRUARY 6, 1987 11 A.M.

AT PENNS VALLEY LIVESTOCK AUCTION Centre Hall, PA

45 HEAD

25 Cows All Stages, 20 Heifers All Ages, Cattle Pregnancy & Vet Checked.

Other consignments welcomed before 9 a.m. on Friday.

For more information call Scott L. Yocum, 814-364-9096 or 814-466-3150.

Sale by **BENJAMIN NOVAK** Trustee in Bankruptcy for the Estate of Carolyn Green, FmHA, Roger Green

Terms: Cash or approved check

PUBLIC AUCTION

Discontinuing dairying, the undersigned will sell located near Union Bridge, MD or nine miles east of Frederick, MD on Route 26 to Libertytown, north on Route 75 eight miles to Union Bridge, MD, 3 1/2 miles on Route 75 north to Route 84, north to first farm on left. (One mile from New Windsor, MD on Route 75 south.)

SATURDAY, FEB. 14, 1987 at 11:00 A.M.

60 HEAD OF HOLSTEIN DAIRY CATTLE 60

Consisting of 30 head fresh since December 1, 11 head due to freshen in February and March; balance in different stages of lactation. Ten are first calf heifers, 17 second calf, 20 third calf.

This is a herd of good size cows with good udders, dairy character and production.

Bangs and TB tested within 30 days for interstate shipment.

CATTLE SALE HELD IN TENT LOADING CHUTE AVAILABLE

TWO TRACTORS AND MACHINERY

Int. 856 diesel tractor, W.F., power steering, fast hitch, dual hydraulics, 540 & 1000 P.T.O.; Massey Ferguson 180 diesel tractor, W.F., power steering, 3 pt. dual hydraulics; Int. 3/14 trip back fast hitch plow; Int. 350 transport disc; New Holland 256 rake; Woods 80 rotary mower; N.H. 36 ft. elevator with one HP motor; three pt. cement mixer; Fox 16 ft. silage wagon with tandem axle and roof; John Deere 216 chuck wagon; John Deere 125 chuck wagon; 20 ft. metal feeder wagon; New Holland 307 slurry tandem manure spreader, one year, like new; eight ft. pickup cap.

SILAGE

Twenty-four ft. corn silage in 26 ft. silo with unloader.

SALE ORDER: No small items—sale will start with machinery, silage, cattle.

TERMS: Cash—not responsible for accidents.

TRUMAN & HELMA THOMPSON

Phone (301) 775-7435

AUCTIONEER: Robert C. Mullendore

CLERK: C.L. Metz

—LUNCH RIGHTS RESERVED—

PENNSYLVANIA DRAFT HORSE & MULE ASSOCIATION SALE

February 19, 1987

Blizzard Date- February 20, 1987

Pennsylvania State Farm Show Building - Corner of Cameron and McClay Sts. Harrisburg, Pa.

Tack- 9:00 A.M.

Horses- 12:00 Noon

Terms- Tack and Draft Horse related items

10% with maximum commission \$50.00

Horses- \$30.00 to accompany consignment

If no sale- no refund.

6% commission-Maximum commission \$180.00

\$30.00 entry fee to be deducted from commission.

Cataloged Horses to sell first.

Will accept consignments up to 11:00 AM

February 19, 1987

Horses will be sold in order of consignment. Negative Coggins test and health papers within 6 months must accompany each horse, please have foal papers in order.

Note: Non-catalog consigners, we also have a demand for wagons and equipment, Fore cart will be available for hitching. You must give 4 days notice to assure a stall for your animal — if no notice is given you will have to sell off your truck.

CONTACT FOR HORSE SALE

Elmer D. Lapp

Box 97 RD#1

Kinzers, Pa. 17535

717-768-8177

Luke Bruckhart

RD#2 Box 100

Manheim, Pa. 17545

717-665-5198

FARM AUCTION

SATURDAY, FEB. 7, 1987

At 11:00 A.M.

Blizzard date Wednesday, Feb. 11, 1987

At 11:00 A.M.

Sale to be held at the former Frank Lent Farm on Route 49 between Gold and Coudersport, (Potter Co.), Pa.

45 Holstein Heifers 45

4 just Fresh sale day; 13 bred 6-8 mo. (9 vacc.); 10 ready to breed open (7 vacc.); 5 bred 2-3 mo. (3 vacc.); 12 10 mo. (2 Reg.); 1 18 mo. herd sire.

Pregnancy checked, shipping fever shots, interstate charts. All heifers home raised (unvaccinated) or bought from one herd (vaccinated). Dairy beef is considerably higher. Now is the time to take advantage of the higher milk and beef prices. All dehorned, no ringworm. Eating hay and corn silage and are stanchion trained.

Titled Vehicles

1979 C-20 flat bed pickup, 4 wheel drive, 350, automatic; 1985 Yamaha 490 dirt bike; 1979 Chevy Impala, 305 V-8 automatic; 1978 Chevy Van, auto, doesn't run.

Equipment

Farmall BN Tractor; Farmall 460 diesel, n f, 2 pt; Farmall 560 gas, n f; JD 24T baler w/3 yr. old hyd. kicker; Int 560 6 bottom semi-mount plow; Int. single beater spreader w/hyd gate and new T bar chain; JD 38 chopper w/2 row narrow head; J.D. 60 skid-steer loader w/bucket (forks sold separate); Ford 501 3 pt. mower; Badger unloading wagon on gear; J.D. 214 3 beater wagon on h.d. J.D. gear; NH 469 haybine; Gehl 600 chopper w 2 row wide corn & pickup head; JD 55 belt table blower; A-C pto blower; Int. rake; NH 275 kicker baler; NI 214 single beater pto spreader; J.D. elevator; drinking cups; No unlisted items.

Produce

Appx. 125 T second cutting alfalfa silage. NOTE: Rodney and Sally sold their dairy herd in May 1986. They are now completely dispersing their farm operation as both have outside employment. Be on time as there are no unlisted items.

TERMS: Cash or good 1 way check.

Lunch, heated tent

Owned by

MR. & MRS. RODNEY HERSHEY

Sale conducted by

Pirrung Auctioneers, Inc.

Wayland, N.Y. 14572

Ulysses, Pa.

716-728-2520 814-848-7421

Auctioneers License #1646

For information contact Jerry Pirrung

Sales Agent, 814-848-7421

PUBLIC SALE OF FARM MACHINERY

12 mi. South of Red Lion off Rte. 74 at Airville take Rte. 425 north about 2 mile to first crossroads turn right on Posey road to sale.

FRIDAY, FEBRUARY 13, 1987

12:00 NOON

4 TRACTORS

John Deere diesel 4020 WFE power shift dual hyd. outlets less than 400 hrs. since overhauled, side console.

John Deere 3020 diesel power shift WFE new rubber.

John Deere 730 diesel tricycle, direct start, good rubber, 3 pt. hitch.

John Deere 620 gas, good rubber, 3 pt. hitch w/New Idea loader.

John Deere 4 bottom semi mount plow, hyd. reset; J.D. 12 ft. roller harrow; J.D. 12 ft. R.W.A. disc trans.; Massey Harris offset disc; Athens 10 ft. heavy duty disc transport.

Gleaner F2 Corn & Soybean Special Combine Hyd. Drive, 13 Ft. Floating Grain Head, 200 Hrs.

JD 7000 cornplanter w/no till coulters, liquid fert., insecticide boxes & monitor, (38" row); JD 237 mounted corn picker w/irons for 3020.

5 hay rack wagons 8x8x16, 3-1065 J.D. gear w/extension tongues, 1 J.D. 1065 gear, 1 AC-6 ton wide track gear, 2 of the J.D. have flotation tires, w/rear and front end loading; John Deere 336 baler w/#30 thrower; New Idea 36 ft. elevator w/2 hp. motor; 3 gravity bin wagons JD 1065-965-953, Hill Bros. and EZ flow bins; J.D. Van Braunt 13 disc drill w/small seed box; New Holland 489 haybine; Pequea hay fluffer; 5 wheel hay rake (trailer); Co-op 16 disc traction lift drill w/small seed box steel wheels; 8 ft. double cultipacker; corn drag; 1 flat bed wagon, Central tractor field sprayer.

14 bales of baler twine; 6 bags seed corn 4 Agway & 2 Jaques; 5 hyd cylinder; 500 gal. gas tank w/pump; 200 gal. fuel tank w/pump; Farmall H for parts; 5 ton alfalfa hay, sawed cherry lumber (dry). Very few small items. Don't be late.

Terms by

BARRY JOHNSON

Phone 717-862-3833

Aucts.

J. Everett Kreider, Bucher, Heaps, AU000512L

Reason for sale, due to health conditions
 Lunch by Ladies of Pine Grove Church