

AUCTION

**STOVE MANUFACTURING PLANT
TUESDAY, FEB. 10, 1987**

10 A.M.

27 N. Washington St., Boyertown,
Rear of Schmoyers Home Center

EQUIPMENT & TOOLS: 1978 C.50 Chev. Stake Body Truck, 17,400 lbs. gross weight. Computer- Commodore Tractor Printer series 2020, CBM Floppy Disc Drive Model 8050, Keyboard & Screen 8032, Letter Quality Printer 8300 P. DeVilbiss Paint arrester type Spray Booth; Aro. Paint Dispenser & Mixer; Powermatic 4-spindle Drill Press; Allen 6-spindle Drill Press; 3 Powermatic air-powered Drill Presses; J.G.A. Spray Gun; 12 in. wide Band Saw; Radial Skill saw, 12 in.; 1/2 ton Chain Hoist; Miller Elec. Welder, S.R. 200; 2 welding Jigs; table model Bench Saw; Barrel Rolls; 2 portable Dayton Oil Heaters; Hydraulic Hand Lift; 15 sections 10 ft. Conveyor Rollers; Industrial Dollies; Industrial Storage Racks; 2 skids new stove bolts; skid stove Molds; hand Tools, Air Hoses, file cabinets, 4 Office Desks & Chairs, 3 water recycling Units, etc. Personal property of Cawley Stove Co.

Sold By
ORDER OF S.B.A.

Hess & Moyer, Aucts.

Conditions cash or approved check on day of sale.

Removal same day. Bring your Trucks!

489-7127 948-8050
HESS & MOYER
Au 409L AUCTIONEERS Au 642L
115 HESS ROAD • COLLEGEVILLE, PA 19426

Public Auction Register

PUBLIC AUCTION

**13 ACRE FARM
THURS., FEBRUARY 12, 1987
at 10:00 A.M.**

Located at north end of Bowmansville at junction of Rt. #625 and Lauchtown Road, Brecknock Twp., Lancaster County, Pa.

House

2 1/2 story, 1st floor has large new kitchen and dining area, family room and living room. 2nd floor has 3 bedrooms and full bath.

Barn

Frame bank barn with new metal roof, upper area used for hay & straw storage, lower area stable for approx. four horses and ten head of cattle, also several other out buildings, all buildings are in good condition.

Land

Approximately 13 acres all open ground no woodland. Approx. 8 acres tillable balance in meadow and building area. Terrain gentle slope. Zoning is Residential Medium. Water supply by well and pressure system. Public sewage.

Inspection anytime by appointment.

10% down day of sale, final settlement on or before March 28, 1987.

Elton Horning Farm Agency 215-286-0135

Terms by:
MAHLON & ADA HORNING

Elton Horning Auctioneer #000434

MON. FEB. 16 - 10AM
Four Tractors, Hi Lift, Trucks, Car, Orchard Eq. Paradise Orchards taking PA Rt. 234, 1 mi. E. of East Berlin, PA, or 9 mis. W. of York, PA, on Rt. 234, turn N. onto Canal Rd. go 1/4 mi. and turn onto Short Rd., first farm.

Hostetter Paradise Orchards, Owners. C. David Redding, Auct.

MON. FEB. 16 - 10:30AM
Complete Liquidation of the largest grower-packer of potatoes in New Jersey. J&B Potato and Grain Farms, Inc., Hightstown, Monmouth Co., New

Jersey, Owners. Pirrung Aucts., Inc.

TUES. FEB. 17 - 9AM
Holstein Cows, Heifers, Mules, Farm Machinery, HH. Located from Strasburg traffic light go S. on May Post Office Rd., 4 mis. turn E. on Springville Rd., approx. 1 mi. to sale. For: Daniel F. & Hanna B. King, Kreider & Kline Auct. Service.

TUES. FEB. 17 - 9:30AM
Farm Mach., Mules, HH. 1 mi. E. of Intercourse, PA. Samuel L. & Rebecca Esh, Owners. Steve Petersheim & Steve Jr., Aucts.

WED. FEB. 18 - 9:30AM
Farm Mach., Horses, HH. 1/2 mi. S. Vintage. Jacob S. & Rebecca H. Beiler, Owners. Steve Petersheim and Steve Jr., Aucts.

WED. FEB. 18 - 10AM
Modern Farm Eq. Located 3 mis. W. of Greencastle, PA. Mr. & Mrs. H. Eugene Lawson, Owners. Robert C. Mullendore, Auct.

THURS. FEB. 19 - Midrock Holsteins, Wm. G. Blose, Penn Laird, VA. (Near Harrisburg). 225 Reg. Holsteins. Ownby Auct. & Realty Co., Inc.

THURS. FEB. 19 9AM
Farm Equip. Located between Soudersburg & Paradise at 2969 Lincoln Hwy., Rt. 30, 8 miles East of Lancaster. Terms By: T.J. Wheary & Sons. Aucts: Robert E. & Jeffrey R. Martin & Blaine Rentzel.

THURS. FEB. 19 - 9AM PA
Draft Horse & Mule Association Sale. Pennsylvania State Farm Show Building, Corner of Cameron & McClay Sts., Harrisburg, PA.

THURS. FEB. 19 - 9:30AM
Longview Farms (Punk Bros.), Rt. 526, Imlaystown, NJ. Farm Mach., used on 1000 acre potatoe & grain farms. Sale by: Col. Fred R. Daniel Aucts., Inc.

THURS. FEB. 19 - 9:30AM
Horses, Mules, Dairy Eq. & Farm Machinery. Centre co., 1/4 mi. W. of Madisonburg, PA, turn S. off Rt. 192, 1st lane. Henry F. & Anna Beiler. Mark Glick, Auct.

THURS. FEB. 19 - 10:30AM
Six Tractors, Farm Equip. From Honey Brook take Rt. 322 east approx. 6 miles to Rt. 82, turn right proceed 1 mile to sale on left. From Rt. 30, take Rt. 82 north approx. 4 miles to sale on right. West Brandywine Twp., Chester Co., PA. Allen S and Alta W Hoover, owners Nevin Z. Martin & Lewis B. Groff, auctioneers.

THURS. & FRI. FEB 19 & 20 - Large Two Day Sale of Farm Eq., etc. at our place of business, 1 mi. E. of Marion, PA, off Rt. 81 Ralph W Horst, Manager

FRI FEB. 20 - Willowlyn Farms Inc, Catlett, VA Between Fredericksburg & Warrenton. 125 Reg. Holsteins. Ownby Auct & Realty Co., Inc

FRI FEB 20 - 9:30AM
Farm Eq. 1/2 mi S of Fogelsville, 8 mis. W of Allentown, PA For Joshua & Althea Grim Ralph W Zettlemoyer Auct. Co., Inc

FRI FEB 20 - 9AM
Horses, Cattle, Machinery, some Furniture, items for school 4 mis. W. of McClure, PA, turn N off Rt. 522 at the Mifflin/Snyder Co. Line Noah A. & Elizabeth Yoder Mark Glick, Auct

FRI. FEB 20 - 10AM
Horse Sale. New Holland Sales Stables, Inc., New Holland, PA. Abe Diefenbach, Manager

FRI FEB. 20 - 10AM Farm & Dairy Eq. Fred & Dorothy Black, Kings Hwy., 1 mi S of Swedesboro, NJ Cowtown Aucts., Inc

FRI FEB 20 - 6:30PM
Corn Sale Winterstown Fire Hall, York Co J Everett Kreider, Auct

SAT. FEB 21 - 320 Clay School Rd., Ephrata Selling Farm Equip & Tools for Mrs Paul H. Buchter. Paul E Martin, John D. Stauffer, Auctioneers

Public Auction

**Farm Machinery, Antiques,
Household Goods
Saturday, February 21, 1987
9 A.M.**

Location: Take Rt. 272 South of Lancaster 9 miles. Or 4 1/2 miles North of Buck, turn East on Pennsy Rd. 3/4 mile to sale.

Terms By
Ira T. & Mary H. Harnish

Auctioneers Conducting Sale:
Lloyd Kreider, AU000513L,
Randal Kline, Roy Good, Gary Shirk
717-786-3394

Kreider & Kline Auctioneers

MESSICK FARM EQUIPMENT Annual Consignment Auction

Thurs., March 5, 1987

Equipment you have no more need of, consign it to this public sale.

We will list it free if you bring it in before Feb. 23, Call (717) 367-1319, (717) 653-8867, 1-800-222-3373.

Sale Conducted By:
Raymond Miller's Auction Service
A0617L
717-653-8762

PUBLIC AUCTION

of
**Trucks - Tractors - Combine
Farm Equipment
SAT., FEBRUARY 7, 1987
11 A.M.**

LOCATION: Going from Clayton, De. to Massey, Md. on Rt. 40 turn right onto Rt. 7 at the electric power station. Third farm on right. The George Beck Farm.

TRACTORS & COMBINE

4230 diesel John Deere tractor with quadrangle 18.4x44 tires (3685 hrs.); 970 diesel Case Agri-King tractor with cab, air, power shift, 18.4x38 tires (2133 hrs.); 830 gas Case tractor with Dual Range drive & eagle hitch; M gas Farmall tractor w/loader; 1400 New Holland diesel combine w/cab, air, #960 13' cutter bar & #962 4 row wide corn head.

FARM EQUIPMENT

7000 J.D. conservation no-till 4 row planter w/dry fertilizer boxes & insecticide boxes & monitor, Int. #475 14' disc w/dual wheels (1 yr. old), 14' Brillion crowfoot packer, 14' Brillion solid wheel packer, transport wheels for packer, 6 row Brillion S Tyne cultivator, Case B-137 14' disc, Brillion 14' field cultivator, J.D. F-145 J.D. 5x16" plow, 10' Ferguson chisel plow w/buster bar, 5 bottom plow packer, 6"x25" grain auger on wheels, J.D. #737 Gyromor 14' rotary mower, J.D. 6' rotary mower on wheels, funnel body wagon, J.D. 14' fertilizer drill, Servis 7' 3ph blade, 275 skid tank, 110 gal. fuel tank & pump, 3ph lift boom, 18.4x34 duals, 16.8x28 duals.

TRUCKS

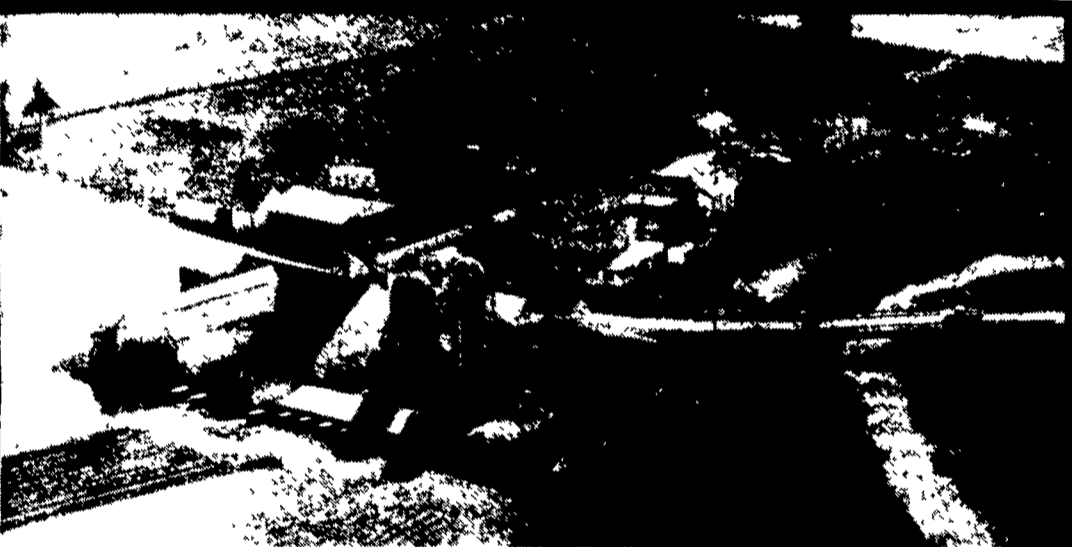
1966 Ford F-700 5 speed w/16' grain body; 1958 Chevy 4 speed 2 axle w/13' grain body; 1957 Ford 4 speed 2 axle w/14' grain body

No small items-So be on time for equipment
Terms: Cash or Approved Check

Owner
HARRY WALTON

Sales Mgr. & Auctioneers
C.T. SCUSE & SONS, INC.
302-653-7530

Lunch



Farm in the heart of Big Valley - Mifflin County - Belleville area.

**REAL ESTATE
to be offered in**

PUBLIC SALE

on SATURDAY, MARCH 14, 1987

at

MACHINERY SALE & HOUSEHOLD GOODS

of Stephen W. and Bertha M. Zook sale date, 1:00 P.M.

Farm consists of 2 barns, 3 houses, machine sheds, 2-car garage and land if not sold before above date.

Barn 1- 2 story w/20 Sho-Eze tie stalls, gutter cleaner, 2 1/2 in. stainless milk line, 5 units DeLaval milkers, 800 gal. Muller bulk tank, pre heater, water heater, etc. Feeding area consists of bunk feeder under roof for 60 head cattle, taper board feeder, also 3 silos w/unloaders, nearby, push button feeding.

Barn 2- Consists of 2 story structure w/large area for cattle of all sizes & ages, with lot of room below & above for feed storage, milking equipment may be offered separate from farm.

Houses all in good repair w/electricity, heat, bath, running mt. water w/1 acre of mountain ground where water supply comes from.

Land consists of total 79 acres- app. 50 acres of high fertility limestone ground, bal. pasture w/nice large trout stream running from one end to other. Total land app. 79 acres. Hard surface road between house & barn. Omesite around barn and cattle area. Farm zoned for agriculture and industry.

Please Note- There are many future possibilities for this farm in this special area. Must be seen to be appreciated.

TERMS OF SALE: 10% down - bal. day of settlement.

Real estate taxes pro-rated.

Seller pays all taxes until final settlement.

Owner reserves right to accept or reject any or all bids.

Final terms day of sale.

Owner selling due to ill health

STEPHEN W. & BERTHA M. ZOOK
Ph. 717-935-2886

Auctioneers:

Daniel P. Zook AU-1063L

Ph. 717-483-6791

Mark S. Yoder AU-1049L

Apprentice: John Rheem AU-1608L

A complete line of good farm machinery will be offered.