

MARSH MARKET FOR SALE

500 gal. galv. water pressure tank. Best Offer. JD KBA 28 disk. \$300 OBO. Lanc. Co. 215-445-5090.

Three cyl. Lister dsl., A1 shape, cyanoyd starter included 2400 354-4158. Contact David S. Lapp, Cider Mill Rd., Ephrata, PA 17522.

Star headliner seed, mulch plastic, potting soil pots, etc. M.M. Sauder, RR2, Box 2194, East Earl, PA 17519.

Dairy goats A.D.G.A. Nubians pedigrees' milk records to 3400 pounds. Bred does, bucks, stud service. Price bargaining. Gettysburg. 717-334-7993.

Motor home-Winnebago 26', 40,000 miles, sleeps 6, 110/gen., AC, good shape, lots of storage, everything. Northampton Co. 215-759-7190.

Last year's hay, first cutting alfalfa, .50 bale. 717-653-5630.

Mixed hay and timothy hay, no rain, wheat straw, by the bale or ton; Muscovy ducks. Dauphin Co. 717-533-6115 or 534-2229.

12 Peaked roof trusses, 34' long. \$35 ea. OBO. Lanc. Co. 717-665-9351.

7060 AC, 2400 hrs., new rubber. Will sell or trade for smaller tractor. Schuylkill Co. 717-998-9638.

Case 730D, good condition, 3 pt. dual remotes. Mont. Co. 215-933-4566 after 7PM.

Gleaner A 2R corn, 12' grain; JD 110' disk; JD 2R corn planter. Schuylkill Co. 717-648-9082.

IH 311, 3 pt. 3x14" F.H., \$275; field cultivator Brady 14' Tr.; Glenco 13', 3 pt., \$450; 4R rolling cultivator, exc., \$195. Berks. 215-944-7529.

5' sickle bar for AC B. Columbia Co. 717-784-6203 after 4PM.

Refrigerator compressor, new 1/2HP motor, 220 volts. Was on large deep freezer. \$225. 717-733-8554.

Hanging rabbit cages, flat wagons, 3 pt. rotary mower, locust walnut and oak trees, old house shutters. Lanc. 717-684-5352.

Hay mixed quality variable, 70 cents bale in quantities of 50 or more. State College, Centre Co. 814-234-1519.

Pair Firestone tires 800-16.5, 8 ply, like new; yearling heavy bread chickens, \$1 ea. Sch. Co. 717-345-3310.

1950 Borg Thorobred horse trailer, 2 horse, with 1950 Chevy fenders & tail lights, \$600. Chester Co. 215-274-8019.

Top buggy w/rubber & hyd. brake, good condition. \$850. Lanc. Co. 215-267-2128.

Three yr. old registered saddlebred mare. Best Offer. Safe and sound. I.S. Ebersol, 75 Hess Rd., Leola, PA 17540.

Woods 10' offset mower, \$750; grove wagon, \$250; MF 35 dsl. orchard, \$3,000; 3" irrigation pipe, \$25 ea. Adams Co. 717-677-6536.

Steel cement filled wheels and new magemeto for S-C Case. Eli S. King, 1245 Noble Rd., Christiana, PA 17509. Lanc. Co.

Truck bed, 17' long 8' wide, metal bottom, tractor chains, dump trailer, top link, heat houser. York Co. 717-244-3024.

Cunningham hay crimper in good working condition, \$400; 2 steel wheel wagons. Berks Co. 215-944-9973.

1970 Chev. Monte. Carlo for parts, 3SP man. trans., 350 eng. After 4PM, 717-776-7357. Cumb. Co.

Butler Oswalt 1830 ensilimixer trailer G.C., \$7,200; truck rims 9x22.5, \$10 ea. Franklin Co. 717-352-3534.

IH M, good condition, 12V, \$975; 10' spring tooth harrow, \$250; 16' Cardinal aluminum elevator, \$175. Newport, Perry Co. 717-567-9340.

incubator, small, 12-48 eggs, 25 watts, 20" diameter, almost new, \$30; Bolens snow blade, 54", excellent, \$100. Lanc. Co. 215-267-5696.

AC 200 with cab, excellent, \$6,500; Hesston 5800 round baler, make offer. Can deliver. Indiana Co. 412-783-6333.

1st cutting leafy alf/brome hay baled in May, \$100/ton; 2nd and 3rd cutting, \$110/ton. Snyder Co. 717-837-0265.

165 gal. gas tank w/pump, \$185; manure spreader on rubber, good cond., \$250. Col. Co. 717-925-2597 eves.

Fiberglass wallboard for milkhouses, farrowing houses; clear greenhouse fiberglass and corrugated siding, roofing. Berks. Luke Martin, 717-933-8541.

Horse trailer, 2 horse; flatbed trailer, tilt, 15" wheels, jack; plank floor. Berks. 215-582-4434.

3,000 lb. portable platform scale with load release lever, brass beam, \$350. Lanc. Co. 215-445-5898.

Fisher fireplace insert with blower, \$250; 279 NI cutditioner, good condition. Berks Co. 717-933-4831.

PA2-1 Petter, AC 2-1 Petter. Both in excl. cond. Snyder Co. Mornings 7:30 to 8 Mon. thru Fri., 717-374-2377.

1977 Skidoo 440 TnT Everist snowmobile in good condition, \$650. Perry Co. After 5PM, 717-789-4353.

Electric broom-making equipment, stitcher, winder and cleaner with motors. Adams Co. 717-624-8353.

8,000 gal. tank, good condition. Will Deliver, \$800. 40' trailer w/tomato sides, slider 671 Detroit dsl., complete. 717-933-8943.

NH 352 grinder mixer. York Co. 717-432-3338. No Sunday calls.

Straw: Clean and bright pickup at barn, or we can deliver. Lanc. Co. 717-684-8137.

JD 14T baler, good condition, barn kept, \$750. Adams Co. 717-677-7252.

252 Oliver disk, 12' cut, very good condition. \$1,000. Lanc. Co. 717-284-2444.

Rotary snow blower for 400 Series AC or Simplicity tractor. Sam size price, \$250. L.R. Warner, Sr., RR1, Box 92, Elliptsburg, PA 17024.

Pair mud snow tires, deep lug 700x15 LT on G.M. rims, \$80. Lanc. Co. 717-872-2300.

Tractor cab for 1755-1855 White pickup camper equip. with stove, heater, toilet, frig, sleeps 6. Lanc. Co. 717-354-9136.

Five holstein heifers, due soon, nice size. Franklin Co. 717-328-2971.

Used Winkler hot air furnace, low pressure burner with tank and extra burner, 85,000 BTU, \$275. Lanc. Co. 215-267-5096.

Amish buggy, good condition, \$600. J.B. Stoltzfus, Windy Top Rd., RR2, Box 142, Christiana, PA 17509.

Farm 200A, 60 tillable, borders Susquehanna River. Home, large barn, along Rt. 147 near Dalmatia, PA. North'd. Co. 717-692-3616.

1973 Int. cattle truck, 20' bed, wood body, 10.00x20 tires, air brakes, 72,000 miles, \$7,000. Snyder Co. 717-658-3360.

Rear chrome bumper and AM/FM radio for 1972 thru 1980 Int. Scout. Lanc. Co. 717-627-1364.

BANTAMS: 2 pair dark cornish, 2 pair white rock, 2 pair mottled rose comb show birds. All bantams, \$15 pair. York Co. 717-244-6078.

Clean clover seed, home grown, \$70 a bushel. Ber. Co. 215-683-3094.

Ford 5000 w/cab, 38" tires, like new, easy life since '72, \$4,950. Gar. Co., MD. 301-334-4030.

Ford 4000 w/loader, 1200 hrs., \$4,500; Ford 3PTH, 3 bottom plow, \$350; Ford 901 mower, \$300. York Co. 717-938-3056.

Quality hay, \$80 to \$95 per ton; also two riding horses, \$450 a piece. Perry Co. 717-789-4496.

AKC collie pups; sable and white and tay color. Ready to go Jan. 23. 717-374-4401.

CB450 Honda cycle, low mileage and good condition, \$350 OBO. Lanc. Co. 717-665-3865.

IH 656 dsl., WFE, 3PTH, good condition; 13.6x38 tractor chains. York Co. 717-229-2683.

fuel oil tank for above ground; AKC collie pup, male, AKC collie and pomeranian at stud. Lanc. Co. 717-733-8770.

Prizer coal range, warming closet hot water tank nickle trim, nice; McD 16 disk grain drill, steel wheels, good shape. Aaron Stoltzfus, Horsehoe Rd., Leola, PA 17540. Lanc. Co.

McCullock 1-71 chain saw, 24" bar, like new, \$100 OBO; Subran coal and wood stove, like new, \$225 OBO. 717-656-9548.

Hunting ground, Indiana Co. 100 acres good hunting timbered woods. Secluded, scenic, stream, \$80,000 negotiable. 412-479-2762.

75KW dsl. generator, plant on tandem trailer with self contained fuel tank, \$3,000. Gosperich. 301-793-0784 MD.

224 Silomatic 20' unloader with 7HP motor, 50' auger feeder with 5HP motor; Lancaster Level-Flo. Adams Co. 717-334-1824.

IH gravity dump wagon with rubber wheels or lawn and garden tractor, \$200. Cost \$500 New. Lebanon Co. 717-838-3943.

460 Farmall, gas, NFE, looks and runs well, good tires, \$2,300. Lanc. Co. 717-626-8912.

Farmec hay grain elevator, 36', \$700 or trade for 32' NH or Zimmerman. Lanc. Co. Omar F. Glick, Millwood Rd., Gap, PA 17527.

UKC registered coonhounds, four month female English, \$75; one yr. male walker, \$100. Lanc. Co. After 5:30PM, 717-859-2974.

Bushel crates, used, \$1.25 ea. 717-677-9794 or 677-6224.

Sawdust for bedding, crates, bulk bins, shredded bark, pallets. Lumber Mt. Valley Farms & Lumber, Biglerville, PA. 717-677-6166.

'73 jeep wagoner, 4WD, one owner, runs well, new tires, \$650. Montg. Co. 215-584-9022 eves.

45x85 barn T&G siding, 185 bu. gravity bin, 1968 Ford grain truck. Adams Co. 717-637-8045.

Sauder loader with dirt scoop, manual trip, good cond. Off Ford. \$75 cash. Leb. Co. 717-949-3988.

DELTA MACHINERY SPECIALS

- 34-410 10" Contractors Tablesaw \$699
- 33-890 12" Radial Arm Saw \$1,135
- DJ-20 8" Long Bed Jointer, 1 1/2 HP, 1 PH. \$1,100
- 43-375F H.D. Wood Shaper, 1/2-3/4 Spindles \$1,499
- 23-680 6" 1/4 HP Bench Grinder \$25
- 23-700 Wet-Dry Grinder \$120
- 50-180 1 HP Dust Collector \$375
- 34-790 RT40, 7 1/2 HP, 3 PH. 14" Table Saw \$3,300
- 34-763F 3 HP, 1 PH, 10" Unisaw \$1,500
- 17-900 1 1/2, 3/4 HP Drill Press \$225



BLUE BALL MACHINE CO., INC. INDUSTRIAL EQUIPMENT & SUPPLIES

Mon., Tues., Wed.,
Fri. 7:30-5:00;
Thurs. 7:30-9:00;
Sat. 7:30-11:30

P.O. Box 369 Blue Ball, PA 17506-0218

(717) 354-4478

WINTER DISCOUNTS

GRAIN STORAGE

NATURAL GRAIN DRYING

FEED BINS AUGERS

FLOORS

WET TANKS



DRYING FANS AND HEATERS



CALL NOW



automatic farm systems

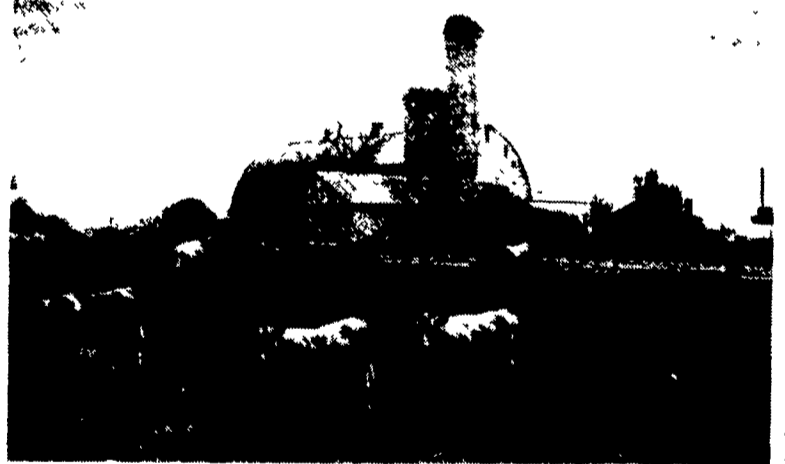
608 Evergreen Rd., Lebanon, PA 17042

(717) 274-5333

Check Our Low Prices Before You Buy

INCREASE YOUR INCOME

Bad water will lower your income



By removing nitrates, bacteria & sulfates from your water you will have a healthier herd. Acid in water increases herd health problems.

Reduce Reproduction Problems

Reduce Herd Health Problems

Produce More Milk

We can remove these nitrates, bacteria & sulfates and put your PH to near neutral.

Call Us Before You Buy
And See Our Many Happy Users

We have competitive prices.

OREGON WATER SALES

Leola, PA

717-656-8380

If no answer, call early in the morning or evenings.