

NJ Ag Preserve

(Continued from Page D3)

help the landowners take advantage of the capital gains exclusion of the income tax law that expired Dec. 31.

Hunterdon will seek reimbursement for half of its investment from the state.

First Preserves

Last year, Hunterdon County became one of the first in the state to buy permanent development rights to a farm when it paid \$143,505 to Ted and Susan Blew for the easements to their Franklin Township farm. Only Burlington County had purchased development rights earlier.

Now, another Delaware Township farm is being eyed for preservation. Appraisers are being assigned to establish the agricultural and development worth of a 122-acre grain farm belonging to Harry Michalenko.

Michalenko would be paid the

difference between the worth to farmers and the worth to developers.

More than 12,000 acres of the state's 900,000 acres of farmland have been enrolled in the program's eight-year preservation effort.

Landowners are not compensated for their agreement not to develop their land for eight years, but they do become eligible for soil and water conservation matching funds from the state when they enroll.

They are also assured protection under New Jersey's Right-to-Farm law and, in municipally-approved programs, are guaranteed that the zoning of their land won't be changed for 11 years from their date of entry into the program.

New Jersey's farmland preservation effort has endured three lean years, but as the curtain opens on its fourth, there are signs that activity is on the rise.

RACINE, Wisc. — Four full-color brochures describing each model of the Case IH 200 Series tractor line are now available. The two-page brochures highlight features of the under-40 hor-

sepower series. The compact, versatile tractors are designed to tackle a wide variety of smaller-scale applications with power and agility.

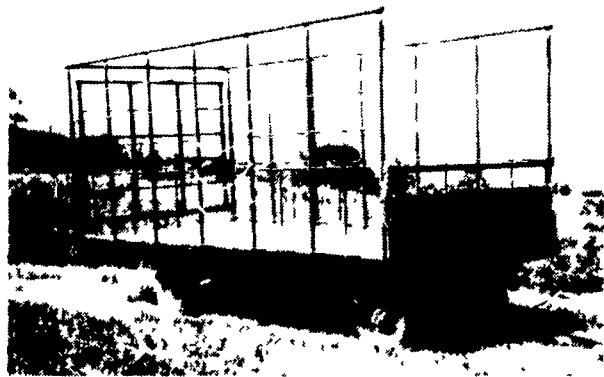
The four brochures entitled

"Model 235 Tractor," "Model 245 Tractor," "Model 255 Tractor," and "Model 275 Tractor" are available from Marketing Public Relations, Case IH, 700 State St., Racine, WI 53404.



SADDLE UP!
To Better Equipment...
Find It In Lancaster Farming's CLASSIFIEDS!

BEST BUY of the YEAR



- 6" Steel Main Beam
- 2" Vertical Tubing Drilled so that the 1" Horizontal tubing extends Full Length of Wagon
- Front-Side and Rear Loading and Unloading
- 2x8 Pressure Treated Lumber Floor
- 2x6 Oak Cross Beams
- Beds are 8' wide, available in 16, 18 or 21' lengths. Racks are 90" high.
- NEW FEATURE: 6" Channel across back for pushing wagon without damaging bed.

FOR FURTHER INFORMATION, CALL YOUR LOCAL DEALER:

LOST CREEK IMPLEMENT
Oakland Mill, PA
717-463-2161

MELROSE FARM SERVICE
Greencastle, PA
717-597-3138

KELLER BROS.
Lebanon, PA
717-949-6501

DUNKLE & GREIB
Mill Hall, PA
717-726-3115

WALTER G. COALE, INC.
Churchville, MD
301-734-7722

TOBIAS EQUIPMENT CO., INC.
Halifax, PA
717-362-3132

NORTHEAST DISTRIBUTING
West Clifford, Pa.
717-222-9020

VALLEY IMPLEMENT SALES
Harrisonburg, VA
703-434-9961

CHAMBERSBURG FARM SUPPLY
Chambersburg, PA
717-264-3533

OXFORD GREENLINE, INC.
Oxford, PA
215-932-2753

PAUL SHOVER'S, INC.
Loysville, PA
717-789-3117

A.B.C. GROFF
New Holland, PA
717-354-4731

CARLISLE FARM SERVICE
Carlisle, PA
77-243-4419

CLARK'S FARM SUPPLY
Williamsport, PA
717-494-0060

Manufactured By

CLW MANUFACTURING, INC.

R.D. #2, Box 8
Newburg, Pa. 17240
717-423-6794

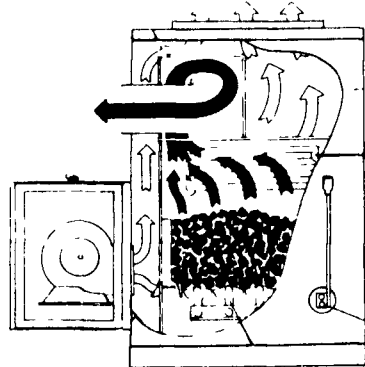
Info Available On Case IH Tractors

The four brochures entitled

"Model 235 Tractor," "Model 245 Tractor," "Model 255 Tractor," and "Model 275 Tractor" are available from Marketing Public Relations, Case IH, 700 State St., Racine, WI 53404.



WOOD - COAL - OIL HOT AIR FURNACES AND WOOD-COAL BOILERS



FEATURES:

- Harman grate system for ultimate wood/coal performance
- Automatic draft system
- Heavy steel plate construction
- Airtight cast-iron doors
- External shaker lever
- 3 speed --1000 cfm blower
- 5-yr. limited warranty (includes grates)
- Log Length 19", 23", & 27"
- Types of fuel: wood/coal (pea, nut, stove sizes)
- Option Available: Domestic Hot Water Coil

Wholesale To Heating & Plumbing Trade

WALTZ ENTERPRISES INC.

30 S. Hershey Ave.
(Bareville) Leola, PA 17540
(717) 656-6898

RD 1 Pleasant Valley Rd.
Cogan Station, PA 17728
(717) 998-2539

TREAT YOUR WATER SUPPLY AND INCREASE YOUR PROFIT



If your herd's water supply has high levels of nitrates, sulfates and/or bacteria your cows can not reach their full potential.

WE SPECIALIZE IN WATER TREATMENT ON DAIRY FARMS.

Our water conditioning methods reduce those robbing nitrates, sulfates, and bacterial to proper levels - resulting in improved herd Health - Milk Production - Butterfat.

YOU TEST THEIR FORAGE — WHY NOT THEIR WATER?

Contact us for information on our proven installations, and a test of your water supply.

MARTIN WATER CONDITIONING

740 E. Lincoln Ave.
Myerstown, Pa. 17067
717-866-7555

548 New Holland Ave.
Lancaster, Pa.
717-393-3612

Early Morning & Evenings Call
717-345-8795

