

Case IH Acquires Steiger

(Continued from Page A27)

expected to turn their attention inward reducing costly overhead, upgrading operations and streamlining manufacturing and production lines."

"There are four reasons why we at Case IH are optimistic. First, Case IH has gained market share in the under 40 horse power market. Also, industry wide sales of self-propelled combines, a big ticket item, are up and so is Case IH market share. Third, Case IH has increased market share in nearly every implement category in our product line. And fourthly,

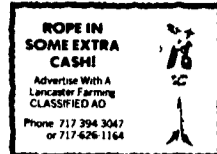
skid loader sales are up as is our market share."

"We are making investments today to keep our company and our dealers competitive in this business for years to come. We trimmed our inventory carrying costs by \$60 to \$80 million in the last two years."

"As a company, we are projecting a profit for 1986. That's a dramatic turn-around from the losses we experienced a year earlier. And some of our competitors are experiencing even this year."

"Our parent company, Tenneco,

plans an investment of over \$30 million in the Case IH manufacturing facilities and product line. We think that's a strong indication of our commitment to agriculture," Boyd said.



Open Breeding Cattle

(Continued from Page A36)

- Breeder's Herd**
- 1 Jesse Haas Best 5 Head
 - 1 Kent Fisher 2 Ray & Mary Grimes Premier Exhibitor Ray & Mary Grimes Premier Breeder Ray & Mary Grimes Limousin Show Heifers
 - Late Spring Calf
 - 1 Line Limousin, 2 Holly Ann McLaughlin Early Spring Calf
 - 1 McLaughlin, 2 Line Limousin 3 Pam Peffer Jr Calf
 - 1 Michael Clark 2 Brian D Miller 3 Clay Acres Limousin Farm Sr Calf
 - 1 Jeff Rose, 2 Tami Rose, 3 Edward Nicol Champion Heifer Calf Holly Ann McLaughlin Reserve Heifer Calf Line Limousin Late Summer Yrlg
 - 1 Brian Miller Early Summer Yrlg
 - 1 Michael Clark, 2 Clark 3 James E Fisher Jr Yrlg
 - 1 Jennifer Rose, 2 Michael Clark, 3 Clay Acres Sr Champion Heifer Jennifer Rose Reserve Champion Brian Miller Grand Champion Heifer Jennifer Rose

- Reserve Grand Champion**
- Brian Miller Limousin Bulls Early Spring Calf
 - 1 Line Limousin 2 Line Limousin, 3 Pam Peffer Jr Calf
 - 1 Clay Acres Winter Calf
 - 1 Line Limousin Champion Bull Calf Line Limousin Reserve Champion Bull Calf Line Limousin Summer Yrlg Bull
 - 1 Pam Peffer 2 J & J Farmers 3 Edward Nicol Late Jr Yrlg
 - 1 Line Limousin Jr Champion Bull Pam Peffer Reserve Jr Champion Line Limousin Grand Champion Bull Line Limousin Reserve Champion Bull Line Limousin Get of Sire
 - 1 Clay Acres Limousin Farm Premier Exhibitor Line Limousin Premier Breeder Line Limousin Simmental Show Heifers
 - Late Spring Calf
 - 1 Jay Stough 2 Kenneth Winebark and J & J 3 M N M Simmentals

- Early Spring Calf**
- 1 Sarah Messick, 2 Rolling Ridge Farms, 3 M N M Jr Calf
 - 1 Jamie Cowell 2 Rolling Ridge Farms, 3 Kenianne Rarick Sr Calf
 - 1 Kenianne Rarick Champion Heifer Calf Sarah Messick Reserve Champion Heifer Calf Jay Stough
 - Late Summer Yrlg
 - 1 Shoemaker & Whitney Hills Early Summer Yrlg
 - 1 Shoemakers Simmentals 2 M N M 3 Kenley Jo Myers
 - Late Jr Yrlg
 - 1 Rolling Ridge Farm, 2 Sarah Messick 3 Jamie Cowell Jr Yrlg
 - 1 Rolling Ridge Farm 2 Shoemakers Simmentals 3 G & J Valley Farms Sr Champion Heifer Rolling Ridge Farms Reserve Sr Champion Sarah Messick Grand Champion Heifer Reserve Grand Champion Simmental Bulls
 - Late Spring Calf
 - 1 John Myers 2 Willis Groff, 3 Peter Byrne Early Spring Calf
 - 1 Rolling Ridge Farms 2 Sarah Messick 3 Rolling Ridge Champion Bull Calf Rolling Ridge Farms Reserve Champion Bull Calf Sarah Messick Late Jr Yrlg Bull
 - 1 John Meyers Early Jr Yrlg
 - 1 Shoemaker/Whitney Hills Jr Champion Bull Shoemaker/Whitney Hills Reserve Jr Champion John Myers Grand Champion Bull Rolling Ridge Farms Reserve Champion Bull Sarah Messick Get of Sire Sarah Messick Premier Exhibitor Rolling Ridge Farms Premier Breeder Rolling Ridge Farms

Public Auction Register

Closing Date Monday 5:00 P M of each week's publication

JANUARY

Laura Breneman, Gary Fasnacht, Auct.

WED. JAN. 21 - 1PM 80 Head Grade Cows. SAT. JAN. 24 - 9:30AM Belleville Livestock Antiques, HH, Glassware, Market, Belleville, PA. 2 Kentuckys, Civil War Rifles. Redding Auct. Service, Rt. 34, 1/2 mi. N. of Gettysburg, bear right at Y (at car wash) and continue 2 mis. on Table Rock Rd. to auction site. Vinton R. Swayne, Reida Longanecker. C. David Redding, Auct.

FRI. JAN. 23 - 6:30PM Dutch Village Auction on Hummelstown-Mid-dletown Rd., Hum-melstown, PA. Take Vine Street Exit off Rt. 283. Gun related and other items from the collection of the late Victor Breneman. Selling for SAT. JAN. 24 - 10AM

Farm Mach., Feed, Dairy Eq., HH Goods. 802 Ashville Rd., Lancaster Co., Oxford, PA. From U.S. Rt. 1, take Nottingham Exit to Rt. 272 N. approx. 4 mis. to Pine Grove Rd. Take Pine Grove Rd. N. to Hart Rd.; left on Hart Rd. to 1st farm on right. From Quarryville, PA, take Rt. 472 S. approx. 6 mis. to Spruce Grove Rd.; right on Spruce Grove Rd. approx. 3 mis. to Ashville Rd.; left on Ashville Rd. 1/2 mi. to farm. Charles J. Wallace, Owner. Aberdeen Sales Co., Inc.

PUBLIC AUCTION

SURPLUS EQUIPMENT FOR BRAUN IRON WORKS WEDNESDAY, FEB. 4, 1987 9:30 A.M.

FORKLIFTS, ANTIQUE TRUCKS, METAL WORKING EQUIPMENT, TOOLS & SUPPLIES, 50' MOBILE HOME EXT.

Located at 443 Horsham Road Horsham, Penna. from Penna. turnpike exit 27 Willow Grove, use Rt. 611 north to Rt. 463 west. Auction is on left. "Land mark"! southeast corner Willow Grove Naval Air Station.

The following items Verson 8' press 45 ton cpy. SN 2079-2855, various forklifts include Hyster, Clarke and others, tigger, Del-Vane hyd. power units 30 h.p. 3 ph. Lodge-Shipley lathe, Cincinnati Horizontal grinder with Filmatic-SN4U2B1-17, Cardboard compactor, numerous welders including Miller SR40 Miller Thunderbolt 40 to 225 amp, Bernard, Marquette, Lincoln, Arico 225 Wasp AC welder Generator, Miller DC arc welder mdl. SR400, leads, Airco welding wire, aceteylene units, Keystone upright 3 h.p. air compressor, 8 h.p. cement mixer, clamps, vises, numerous air tools, Arbor press Ryerson Circle shear, drill presses, chain blocks, snap blocks, cable pulleys, pole jacks, Skil 736 roto hammer, NCGC02 heaters, acorn tables, C&M traveling hoist and controls, hoist trolleys, platform scale, work bench, rod bender, Oster bender, stencil cutter, foremans desk, heat sealing unit for packaging, space heater, gun burner, large truck tow bar, fuel pumps for portable tanks, dock plates, lockers, misc., electrical supplies, rigid pipe threader, general post hole digger, hardware, electric golf cart, air nailers, hyd. winch, water fountain, banding unit, tool boxes for pick up truck, older mdl. Chicago and Schram compressor, 1942 G.M.C. truck with coal body, 1946 4 wheel drive G.M.C. tractor with 10' snow plow also numerous items of value not listed.

Auction for BRAUN IRON WORKS Willow Grove, Pa. (215)657-8113

E.M. Murry Associates

10 S Broad St Lititz, PA 17543

Elmer Murry 626-2636 Richard Murry 626-8175 Professional Auctioneers Appraisers and Advisors Since 1953

AU-00648-L

2nd ANNUAL NEW & USED TRACTOR & EQUIPMENT AUCTION

At Keller Bros. Tractor Co., Buffalo Springs, Lebanon Co., PA Between Schaefferstown & Cornwall on Rt. 419

SATURDAY, FEB. 7th, 1987

10:00 A.M.

No Reserve, All Items Go To Highest Bidder

SEVERAL NEW KUBOTA LAWN & GARDEN TRACTORS

KUBOTA TRACTORS

New G3200, G4200 gear, G4200 Hydro; B6200 2WD; B6100 2WD; L305 DT w/blade & backhoe; L225 w/loader; L260.

FORD TRACTORS

4000 tricycle 8 speed, 4000 Industrial loader tractor, 961 tractor, 9N tractor.

USED OTHER TRACTORS

JD 2940 very good condition, 2 Farmall H tractors, 504 IH, Super C, JD 440 w/loader, Case loader tractor, 2WD Beaver Satoh, Farmall Cub w/cultivator.

USED WINDROWERS

PT10 Hesston, JD 1209 Mower Cond., Gehl 9', Several other used windrowers coming in.

BALERS

New Idea round baler, 275 New Holland square baler.

GRINDER MIXER

358 New Holland.

LAWN & GARDEN TRACTORS

317 JD w/mower, 112 JD, Craftsman 8HP, Walk behind sickle bar mower, IH Cub 100, JD 110, AC B212 blown engine, 5HP Snapper, Bolens 7HP, Wheelhorse 12 HP, Wheelhorse B80, Simplicity 12HP, White 12HP, Wheelhorse 8HP, IH Cub 108, Simplicity 7016, Ford 8HP blown engine, Dynamark 8HP, IH 125, Wheelhorse C-160, Wheelhorse 8HP, Jacobsen, Gibson, Bolens, Case 448 Roper w/loader & other attachments, economy, IH 126, most of these tractors have mover decks, several have snow blades or blowers. Very nice selection to choose from.

LAWN & GARDEN EQUIP.

Used Ariens rear tire tiller, Parker sweeper, Mighty Mac shredder, Toro mower, large selection of garage items, Coats tire changer, valve grinder, many many others. Very nice selection of plows & cultivators for lawn & garden tractors. New Kubota walk behind Rototillers, also several new Ford Rototillers.

Several new Ford walk behind mowers. New Demo YT 16 Ford yard tractor, 2- new Leinbaugh post hole diggers, 1- used Leinbaugh post hole digger, Several sets (used) rear tractor tires.

MISC. FARM EQUIP.

M&W Subsoiler 5 shank, Gehl flail chopper, JD flail chopper, Pequea tedder, New Idea wheel rake, Chevy tool truck, Ford 4 row corn planter, 2 Ford 2 row corn planters, several Sauder loaders, several used discs, several 1,2,3 & 4 bottom plows, used sickle bar mowers, 750 Herd seeder, Dearborne mower, 3pt. sprayer, McKormick plow, 6' IH disc, Ford 2 row cultivator 3pt., IH transport disc, rear 3pt. cranes, large selection of parts for 8 & 9N Fords.

Because Of Our Strong Sales In 1986 We Have A Large Selection Of Good Used Tractors & Equipment

SPEEDY CREDIT APPROVAL

By Filling This Form You Will Be Pre Approved To Purchase And Finance

Name _____
Address _____
Social Security # _____
Signature _____

For Faster Processing Please Mail Or Phone This Information Prior To Sale Date
On Sale Day Credit Approval Will Take About 15 Minutes

List is subject to change due to our day to day business

Auctioneer Harry Bachman AU 0000 33-L Phone # 717-867 1809



SINCE TRACTOR CO. 1921

R7 Lebanon Pa 17042 Rt 419 1 mile West of Schaefferstown Buffalo Springs Lebanon County 717-949-6501

Food Stand At Sale

Auctioneers Note All items go to the highest bidder Don't miss this sale