

Dairy and Livestock Sales

Public Auction Register

Closing Date Monday 5:00 P.M.
of each week's publication

FRI. MAR. 13 - Consignment Farm Machinery Auction at Keister's Middleburg Auction Sales, Inc., Rt. 522, 3 mis. E. of Middleburg, PA, 5 mis. W. of Selinsgrove, PA. Don &

Walt Keister, Owners.

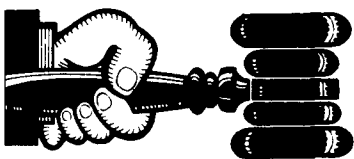
FRI. MAR. 13 - 9AM Farm Eq. New Holland Sales Stables, Inc., New Holland, PA. Abe Diefenbach, Manager.

DEALER IN ALL KINDS OF LIVESTOCK

Also Crippled & Down Cattle

MARLIN S. IRWIN

Quarryville, PA
PH: 717-786-3016



AUCTIONEER'S DIRECTORY

NOTICE

To assure that your Public Sale appears in the Public Sale Section we must have your advertisement by 4 P.M. Tuesday of each week's publication.

WOLGEMUTH AUCTIONEERS

R.D. #2 Manheim Pa

COMPLETE AUCTION SERVICE

CH
PH 717 665 5664
BOB
PH 717 665 6684
DENNIS
PH 717 627 0571

General Auctioneers - Specializing in Liquidation of Personal Property, Equipment, Antiques, Real Estate



Alfred G Reist
1050 Eden Road
Lancaster,
PA 17601

Licensed • Bonded
Lancaster 717-569-2079
Evenings/Lititz
717-627-8008

PROFESSIONAL Auctioneering

PAULE MARTIN
R D 1, Box 553
Stevens, Pa 17578

JOHN D STAUFFER
217 Andrea Dr.
Lititz, Pa 17543

Complete Auction Service We assist you and advise you from the planning stages of your auction to the completion of your auction

For A Consultation In Your Home Call
Paul (717) 733 3511 — John (717) 665-5099
Licensed and Bonded



COMPLETE PROFESSIONAL AUCTION SERVICE
REAL ESTATE — FARMS & RESIDENTIAL
PERSONAL PROPERTY — ANTIQUES —
FARM STOCK SALES — LIQUIDATIONS

RANDAL V. KLINE
AUCTIONEER REALTOR
717 733 1006
717 569 8701

LYOYD H. KREIDER
AUCTIONEER
717 786 3394

ROY E. GOOD, JR.

RD 1 BOX 151 A
DENVER PA 17517
215 445 4309

mi. E. of Marion, PA, off Rt. 81. Ralph W. Horst, Manager.

FRI. MAR. 27 - Real Estate & Farm Eq. 4 mis. N. of Fogelsville, Lehigh Co., PA. For: Joan & Dennis Dominick. Ralph W. Zettlemoyer Auct. Co., Inc.

SAT. MAR. 21 & SAT. MAR. 28 - 2 Day Auction of 4 Tractors, Power Machinery Tools, Antiques, Livestock, Furniture, Local Collectibles. Formerly Stubbs & Evans Farm. #403 Woods Rd., Oxford, PA. By order of Donald G. Brown, Owner. Jeff E. Whiteside & Harry W. Whiteside, Aucts.

SAT. MAR. 28 - George McDonald Farm Machinery, Milk Tank & Tools Rising Sun, MD. J. Everett Kreider, Auct.

SAT. MAR. 28 - Farm Mach., Lawn & Garden, Tools, Furniture, and Miscellaneous Consignment Auction. From Exit 21 of PA Turnpike take 272 South to first light, take Church St. through Rheemstown to Red Run Rd., turn left on Red Run Rd., go 1/10 mi. turn left on Steffy Rd., approx. 1/2 mi. on left. Terms by: Arthur Nolt and Allen Martin. Roy Good, Jr., Randal V. Kline and Lloyd Kreider, Aucts.

SAT. MAR. 28 - 8:30AM Tack; 10:30AM Horses. Keister's Middleburg Auction Sales, Inc., Rt. 522, 3 mis. E. of Middleburg, 5 mis. W. of Selinsgrove, PA. Don & Walt Keister, Owners

APRIL

FRI. APR. 3 - 9AM Farm Eq. New Holland Sales Stables, Inc., New Holland, PA. Abe Diefenbach, Manager.

SAT. APR. 4 - Lions Club Sale. Wakefield area. J. Everett Kreider, Auct.

SAT. APR. 4 - The House of His Creation Benefit Sale. Steve Petersheim & Steve Jr., Aucts.

SAT. APR. 4 - Farm Eq. Near Bethel, PA, just N. of I-78. For: Gilbert Berkenbine Ralph W. Zettlemoyer Auct. Co., Inc

FRI. APR. 10 - 7PM Horse

Sale. New Holland Sales Stables, Inc., New Holland, PA. Abe Diefenbach, Manager.

SAT. APR. 11 - 9AM Wolgemuth Auct. Service Annual All Day Farm Eq. Sale. Tractors, Farm Eq., Tools, Lawn & Garden, anything sold on commission. Located 4 mis. W. of Manheim, Lanc. Co., PA. Along Valley Rd., just off Hosler Rd., 10 min. from Rt. 283 at Manheim Exit. Bob Wolgemuth Sales Manager, 717-665-6684.

FRI. APR. 17 - 6:30PM Consignment Sale of Feeder Pigs & Feeder Cattle. Keister's Middleburg Auct. Sales, Inc., Rt. 522, 3 mis. E. of Middleburg, PA, 5 mis. W. of Selinsgrove, PA. Don & Walt Keister, Owners.

SAT. APR. 18 - New Danville Mennonite School. J. Everett Kreider, Auct.

TUES. APR. 21 - 7PM Feeder Pig Show & Sale. New Holland Sales Stables, Inc., New Holland, PA. Abe Diefenbach, Manager.

FRI. APR. 24 - 9AM Farm Eq. New Holland Sales Stables, Inc., New

Holland, PA. Abe Diefenbach, Manager.

FRI. APR. 24 - 6PM Reg. and Grade Heifers, all ages. At the Belleville Livestock Mkt., Belleville, PA.

SAT. APR. 25 - 8:30AM Tack; 10:30AM Horses. Keister's Middleburg Auct. Sales, Inc., Rt. 522, 3 mis. E. of Middleburg,

PA, 5 mis. W. of Selinsgrove, PA. Don & Walt Keister, Owners.

SAT. APR. 25 - Consignment Sale of Farm Machinery & Lawn Eq. New Park, York Co. J. Everett Kreider, Auct.

SAT. APR. 25 - Geet Ministries Benefit Sale. Steve Petersheim & Steve Jr., Aucts.

DAIRY CATTLE SALE

FRIDAY, JAN. 23, 1987
11 A.M.



At Penns Valley Livestock Auction, Centre Hall, Pa.

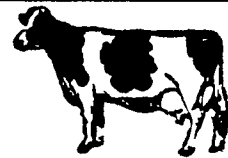
42 Head Holstein Cows 42

19 Registered, 23 Grades. Majority of cattle are first and second calf heifers.

For more information look for next week's issue.

Scott L. Yocum
814-364-9096
814-466-3150

NEW HOLLAND SALES STABLES, INC.



Located 12 Miles East of Lancaster, Pa., just off Rt. 23, New Holland.

SPECIAL DAIRY SALE CONSIGNMENTS

For WEDNESDAY, JANUARY 14th, 1987

Heifer Sale Starts At 11:00 A.M.

* HERD OF 40 HEAD HOLSTEIN COWS IN ALL STAGES OF LACTATION FROM MARYLAND.

- 1 load fresh and springer cows consigned by Norman and David Kolb.
- 1 load fresh and springer cows consigned by Merle Brenneman.
- 1 load fresh and springer cows consigned by Marvin Eshleman.
- 1 load fresh and springer cows consigned by Raymond Smucker.
- 1 load fresh and springer cows consigned by H.D. Matz.
- 1 load fresh cows consigned by Dale Hostetter.
- 1 load fresh cows consigned by Alfred Albright.

For More Information Contact:

Abe Diefenbach
717-354-4341

Norman Kolb
717-397-5538

PENNSYLVANIA ALL BREED BRED GILT SALE

Farm Show Bldg. - Harrisburg, Pa.
Small Arena
Sale Arena Phone (717) 787-4160



Catalogues Available
At Farm Show
Or By Request Only
From
Harry Bachman
138 College Ave.
Annville, Pa. 17003

SALE SCHEDULE

MONDAY, JANUARY 12, 1987

10:00 Yorkshire
11:30 Spotted
1:00 Polands
2:30 Chester Whites

TUESDAY, JANUARY 13, 1987

10:00 Berkshires
11:30 Duroc
1:00 Hampshires
2:30 Landrace

Show Sat., Jan. 10
9:00 A.M.

Auctioneer
HARRY BACHMAN

138 College Ave., Annville,
PA 17003
Tel 717-867-1809

MAY BE REMOVED
FOLLOWING SALE WHEN
SETTLEMENT MADE

PA. CO-OP
SWINE BREEDERS
ASSN.