

Greencastle Livestock

Greencastle, Pa.
Monday, Jan. 5

CATTLE 702. SLAUGHTER STEERS: Choice & Prime 57.00-60.75, few to 62.50; Good & Choice 52.00-57.50; Good & Choice —

Holstein 46.50-51.50; Standard & Good Holstein — 40.00-46.50. SLAUGHTER HEIFERS: Choice 55.00-59.50; Good & Choice 50.00-56.00; Standard & Good 44.00-50.75. COWS: Utility & Commercial 36.00-38.75, few to 40.50; Cutter & Boning Utility 34.00-38.00; Canner

& Low Cutter 34.50 & down. BULLS—ALL WEIGHTS: Yield Grade 1 47.00-51.50; Yield Grade 2 42.00-47.50. STOCKER CATTLE--ALL WEIGHTS. Steers — Medium & Good 52.00-62.00; Heifers — Medium & Good 44.00-52.50; Bulls — Medium & Good 45.00-54.00;

Steers — Holstein 38.00-43.50. CALVES 487. Good & Choice — 125 to 250 pounds 70.00-87.00, few to 90.00; Medium & Good — 125 to 250 pounds 55.00-70.00; Medium & Good — 80 to 120 pounds 48.00-70.00; Light & Cull — all weights 48.00 & down; Holstein Bulls — return to farm up to 121.00; Holstein Heifers — return to farm up to 72.00. LAMBS, SHEEP & GOATS 61. Choice Lambs 71.50; Medium & Good Lambs 60.00-70.50; Light & Cull Lambs 55.00-65.00; Sheep, Ewes & Bucks 22.00-30.00; Goats — all sizes (by head) 15.00-85.00. HOGS 148. No. 1-3 Butcher Hogs — 190-225 pounds 47.00-48.40; No. 1-3 Butcher Hogs — 225-250 pounds 47.50-48.90; No. 1-3 Butcher Hogs — 250-300 pounds 43.00-47.60; Good Butcher Sows — 400 pounds down 39.00-45.00; Good Butcher Sows — 400 pounds up 40.00-47.00; Heavy Boars — over 300 pounds 32.00-34.50; Pigs—all sizes (by head) 24.00-42.50. Sale every Monday afternoon at 3:30 p.m.; Hay & straw sale every Monday at 1:00 p.m. 43 loads. Alfalfa 130.00-161.00/ton. Mixed 90.00-135.00/ton. Straw 77.00-88.00/ton.



WESTFALIA

Let **FISHER & THOMPSON** Show You How To Maximize

Milk Production And Profits With Westfalia High Tech Dairy Equipment

- VACUUM PUMPS
- VISOTRONS
- REGULATORS
- DETACHERS
- COMPUTER FEEDERS

Stop By The Booth At The Farm Show SEE US OR A WESTFALIA REPRESENTATIVE TO EXPLAIN

THE WESTFALIA ADVANTAGES

Proudly Sold And Serviced By

FISHER AND THOMPSON INC.

Milk Equipment Sales And Service

127 Newport Rd. Leola, PA 717-656-3307

24 HR. SERVICE

Amos Fisher...717/687-8871

Rick Thompson...717/627-1162



See **BINKLEY & HURST BROS. INC.**

For Your Case IH Tractor And Equipment Parts Needs. We **STOCK, SHIP AND DELIVER** Parts Anywhere Daily For The Following Lines:

- | | |
|---------------|-------------|
| INTERNATIONAL | RHINO |
| CASE | GEHL |
| CASE IH | BETTER-BILT |
| | HUSKY |

Daily Parts Delivery Connection To Lebanon, Berks & Schuylkill Co. Areas & Others

BINKLEY & HURST BROS. INC.

SALES PARTS SERVICE

133 Rothsville Station Rd. Lititz, PA 17543

Located 1/2 Mile North of Rothsville

(717) 626-4705

Hours Mon-Fri 7 AM - 5 PM. Sat 7 AM - 11 30 AM Sun Closed - Lord's Day

For Yield, Quality, and Persistence... W-L alfalfa stands alone year after year

Today's successful growers work harder than ever before — but they also work smarter. Alfalfa farmers across the country recognize that in tough times they can't afford to gamble with anything less than W-L alfalfa seed to give them the high yields, quality forage and long stand life necessary for a profitable crop. They also know that W-L alfalfas are backed up by over 25 years of research, technical teams of experts and a reliable, service oriented distribution system. You can't buy better alfalfa seed than W-L — you can't afford to buy less.

Distributed by

REIST SEED CO.

Finest Seeds (Since 1925)

Mount Joy, PA

(717) 653-4121



Place Variety Here

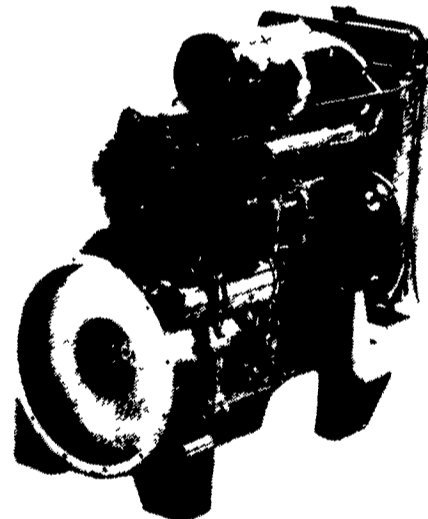
More than seed Solutions



A product of W.L. Research, Inc., 2000 Oak St. Bakersfield CA 93301 (805) 327-4491 • Telex 682460 As a condition of sale please note Statement of Limited Warranty and Liability on all W.L. orders and tags

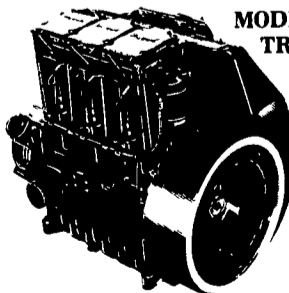
LISTER PETTER

THE FRONT LINE IN DIESEL POWER



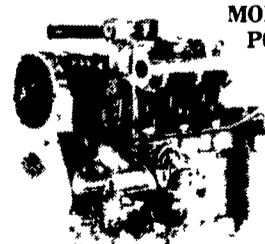
THE COMMANDERS

NEW WATER-COOLED DIESELS 34 to 132 H.P. in 3, 4 and 6 Cylinders



MODEL TR

Air Cooled 2 & 3 Cylinders



MODEL P600

GIVE US A TRY! CHECK OUR PRICES DIESELS OUR SPECIALTY Let Us Know Your Service Problems

AUTHORIZED LISTER-PETTER DISTRIBUTOR **HOOVER DIESEL SERVICE**

Main Location

(717) 656-3322

(717) 295-1729

255 Mascot Rd.

Ronks, PA 17572

Branch Location

(717) 786-2173

313 Furnace Rd.

Quarryville, PA 17566