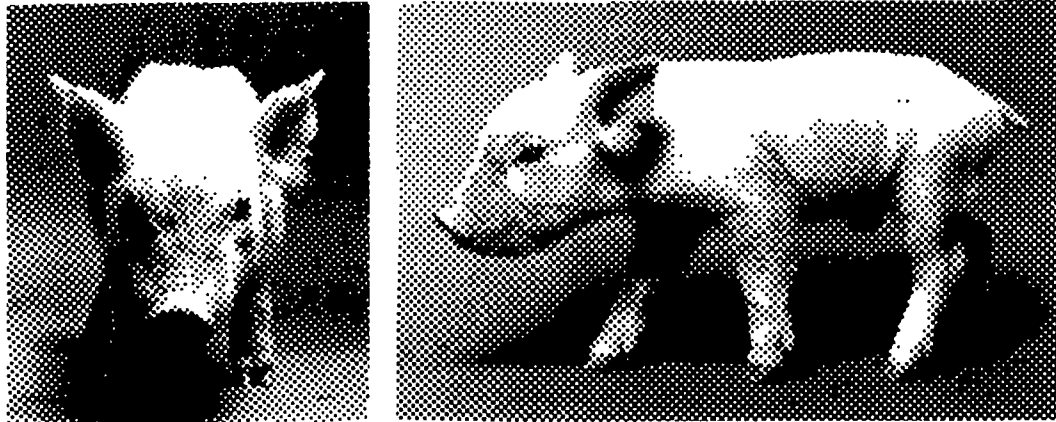


# RUNT HUNT



## WANTED:

# Your Worthless Runts!

Do you... Have runts? Wean early? Have orphaned pigs? We're aiming to hunt down profit-robbing runts and turn 'em into good-doing hogs with new CRATE-MATE, "The Sow Replacer."

CRATE-MATE is scientifically blended to promote fast

growth by actually helping the baby pig use the nutrients in the ration more efficiently. Try it for your runts and early weaned pigs. You'll see bigger, healthier pigs in your nursery faster. So you can increase production per sow unit for greater profit opportunities.

## REWARD!

Just \$3.50 worth of CRATE-MATE can turn an otherwise worthless runt into a real pig! That's not much to invest to increase the profitability of your business. So if you're in pursuit of bigger profits, join the hunt, and declare open season on scrawny runts with CRATE-MATE.

<b>CRATE-MATE FOR NURSING PIGS</b>		
<b>EXCELLENT PALATABILITY</b>		
<b>WEAN HEAVIER PIGS (0.25-1 Pound)</b>		
<b>Effects Of Crate-Mate On Pig Performance</b>		
<b>Of Pigs Weaned At Two Weeks</b>		
	<u>MEAN</u>	<u>RANGE</u>
• Initial Weight, Lbs.....	8.1	4.80-11.50
• 28-Day Weight .....	19.9	14.70-25.10
• ADF1.....	1.03	.82- 1.21
• ADG .....	.84	.71- .97
• F/G .....	1.23	1.03- 1.47

**CENTRAL SOYA FEED RESEARCH**

**CRATE-MATE**<sup>T.M.</sup> Master Mix 

### YOUR MASTER MIX DEALERS

**SPANGLER & SPRENKLE INC.**  
York, PA 17404  
(717) 843-8889

**ABBOTTSTOWN  
GRAIN & FEED**  
Abbottstown, PA 17301  
(717) 259-0609

**MAUGANSVILLE  
CUSTOM FEED SERVICE**  
Maugansville, MD 21767  
(301) 791-5288

**CUMBERLAND VALLEY  
COOPERATIVE**  
All Branches  
Shippensburg, PA 17257  
(717) 532-2197

**BIG VALLEY FEED & GRAIN**  
Belleville, PA 17004  
(717) 935-2163

**SENSENIK FEED MILL**  
New Holland, PA 17557  
(717) 354-4756

**SNIDER'S ELEVATOR**  
Williamson, PA 17270  
(717) 369-3758

**ROSS H. ROHRER & SONS, INC.**  
Quarryville, PA 17566  
(717) 786-3372

**HOLLINGER FARM & HOME SUPPLY**  
Lititz, PA 17543  
(717) 626-2330

**SERVICE FEED & SUPPLY CO.**  
Cardiff, Maryland 21024  
(301) 452-8444  
(717) 456-7433