

35

TRUCKS AND TRAILERS

1966 Ford C850 tandem flat bed, deck & drive train, in very good condition, cab needs work, \$6,000. or Reasonable Offer. 301-834-6138

1970 Fruehauf 32' aluminum dump trailer, nice condition, \$9800. or best offer. 717-532-8601.

1972 GMC tilt cab truck 401V6 5SP, 3SP 2SP, 10-20 rubber, 26' tilt bed, 33,000 gross. Jefferson Co. 814-371-6044.

1973 Chevy C-65 tank truck, 2 poly tanks, hose, reel and meter; 1974 Chevy pickup, 6' bed, 4 WD, lockout hubs, 6 cylinder, 3 speed. 717-367-2667.

1973 Fruehauf 40' dry van trailer, low mileage, excellent condition. 717-784-2061.

'70 Ford W1000, twin screw, 250 Cummins, 10 spd. on radials, good condition.

Esbenshade Turkey Farm
717-687-7631

40 foot flatbed, sliding tandems, new 5th wheel plate and tires, brakes, floor, cross members and frame all in A-1 condition. \$3,500. Call 717-524-9223 Evenings.

1974 GMC Truck w/17' grain dump, 30,000 GVW, power steering, air brakes, 5+2 speed, in very good condition. \$8,900. Lancaster Co. 717-733-4583.

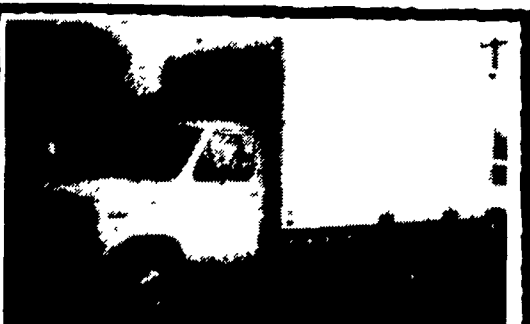
For Sale: '72 Chev pickup; '66 Ford pickup. 717-626-7747

14' flatbed w/twin cylinder hoist. \$650. 717-597-4213.

(2) ALUMINUM DUMP BODIES

For Tri-Axle Truck, 16' Long

Call Zook Molasses Co.
800-662-7464



1986 FORD 350

Econoline, 14' aluminum cube Van, 351 V8, auto. PS, PB, Michelin tires., Only 8,000 Miles.

FOUR WAY AUTO SALES
P.O. Box 444, R.D. #3
New Holland, PA 17557
(717) 354-3199

1976 KW COE
290 Cummins, 13SP, 90% radials, new batteries, \$7,500

609-259-2497 or
609-581-3747

SAVE BIG BUCKS ON OUR TRUCKS



FORD F350 Diesel or Gas
Always In Stock

EBY ALUMINUM BODIES AVAILABLE

F350 CHASSIS IMMEDIATE DELIVERY
137" OR 161" W.B. ★

NEW HOLLAND FORD

Route 23, New Holland, PA
717-354-4901 • Toll Free 1-800-642-8605
PARTS HOTLINE - 1-800-367-3232
Ford Mon-Fri 8 AM-9PM, Sat 9AM-5PM Isuzu Heavy Duty Medium Duty

36

REAL ESTATE

115 acre farm, Northern Berks Co., frame house, barn & outbuildings. For more information call: Horning Farm Agency, Inc. 215-286-5183

FREE CATALOG! Describing numerous PA farms, camps, acreage, cottages, homes and businesses. Write Dept. LF, WEST REAL ESTATE AGENCY, INC., 5528 William Flynn Highway, Gibsonia, PA 15044. 412-443-1200, IN PA 1-800-922-1235.

WANTED TO RENT: Dairy farm with room for 30 to 40 cows in Lanc. or Chester Co. Have cows and equip. Write: Lancaster Farming, P.O. Box 366, R-100, Lititz, PA 17543.

For Rent: Dairy farm, 50 cow Show-Eze tie stall barn, tile mangers, excellent barn cleaner, other barns for young stock. 100+ acres level tillable ground, large pastures, 2 BR house w/garage. Available immediately. \$1200/month. NW Montgomery Co. Prefer long lease. 215-536-8620 (weekdays) or 215-679-2065 or 215-679-6321 (nights & weekends).

If you're looking for a farm, land or have any other real estate needs, you'll find what you want in the Real Estate classifieds. 717-394-3047 or 717-626-1164.

Potter Co., Ulysses, PA. 290+ Acre dairy farm, modern 100 cow & free stall parlor complex, 3 Harvestore silos, 2 heifer barns, manure storage, large house, productive land. Buildings worth asking price. Call for details. 814-848-7478.

EASTERN SHORE FARM: Queen Anne's County, Maryland. 330 M/L acre dairy, hog or sheep farm, 265 tillable, 2 story Victorian house, implement shed, granery, livestock shed, 24 stall stanchion barn and milk house, 300 head hog finishing facility, 10,000 bu. grain storage, feed bin. Property taxes are \$1,571. Price of farm \$540,000. Call owner 301-438-3764 after 6PM.

Union Township, Snyder County, Pa., approx. 45 miles North of Harrisburg, 115+ acres, 4 BR house, dairy bank barn with large milk-house, machine shed and outbuildings. Call 717-374-1657 or 717-374-6321

Sale: 28 Acres, 5 room house, barn, pond. Snyder County, 717-539-8609.

Steuben Co., NY Farm, 93 plus acres, refurbished house, machine shed, bank barn, \$68,000. 215-367-4016 after 6 p.m.

FOR RENT
150 Acre Lebanon Co. Dairy Farm. 70 comfort stalls, pipeline milker.
717-949-3191
if no answer
717-949-2224

118 Acre, 80 tillable, gravel soils, 14x70 mobile home in excellent condition, tool, grain and storage. Owner financing. \$65,000. Call Century 21, The Lane Agency, 607-776-7682.

(130) (151) Clinton County: 10 Acres, suitable for mobile homes or cabin. Wooded, some level area. Call Joseph E. Reinecke, Realtor. 717-854-8912.

(138) Business, includes building & some equipment. Nice location, excellent income potential, inventory may be purchased. Call for details. Joseph E. Reinecke, is an equal opportunity Realtor. Phone 717-854-8912.

(144) Lycoming County: Nice weekend retreat, hunting, fishing, swimming, hiking & etc. Priced to sell at \$7500.00. Call Joseph E. Reinecke, Realtor. 717-854-8912.

(149) 26 Acre, an operating poultry & veal farm. Located in a very beautiful York County setting with a nice house & includes several buildings. Owner selling due to other interests. Call Joseph E. Reinecke, Realtor. 717-854-8912.

88 ACRE CUMBERLAND COUNTY DAIRY FARM: 100 free stalls w/ computerized feeding, double six parlor, three silos, manure storage. Three-car garage and restored stone house. John B. Niesley, R/E, 717-243-7575 (before 8, after 5).



NEW YEAR GREETINGS

The New Year dawns bringing peace, contentment and the bright promise of things to come.

Wimple Associates

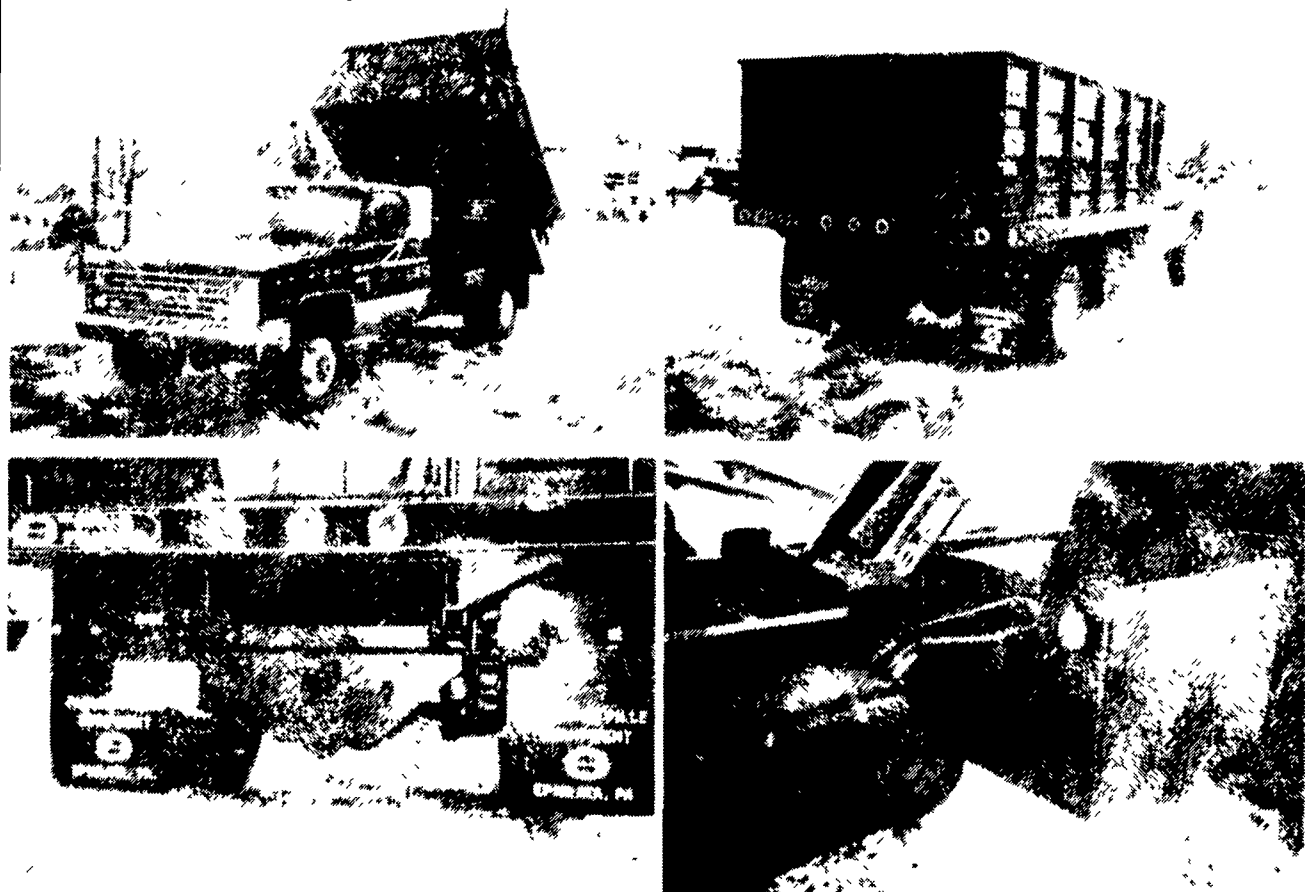
FARMERSVILLE EQUIPMENT

your Authorized



TRUCK EQUIPMENT DISTRIBUTOR

Wishes to congratulate Kurt Alstead of Chester, New Jersey on the purchase of an 11 foot x 88 inch Omaha Standard Wood Floor Platform with Heavy Duty 40 inch Solid Steel Bulkhead and 40 inch Solid Steel Grainsides, Omaha Standard Model #46 DH (Drop Hinge) Hoist, Chelsea PTO, One Model #524 Weatherguard Undermount Tool Box, Custom Heavy Duty Pintle Hook Hitch with Electric Brake Control and Trailer Connection. All installed on his New 1987 K-30 Series Chevy Chassis.



We take pride in our work. If you're looking to purchase a New Truck Body and would like a professional finished look, down to the minor details; Contact John Fry or Tom Buch for information and pricing.

FARMERSVILLE EQUIPMENT, INC. R.D. # 4, EPHRATA, PENNA. 17522
(717) 354-2150