

35 TRUCKS AND TRAILERS

'84 Nissan King Cab pickup, 4 cyl., 5 spd., PS, 1 owner, excellent condition, \$4,950. 717-733-2873

'85 Chevy C30, dual whl., 10' stake body, 350 auto., PB, PS, AM-FM, dual tanks, 10,000 GVW, excellent condition, \$9,600. 717-733-2873

'85 Ford Explorer F250 HD 3/4 ton pickup, 351 4 spd., PS, PB, dual tanks, AM-FM, 8,600 GVW, \$7,800. 717-733-2873

'85 Ford F250, 4x4, 300 6 cylinder, HD 4 spd., PS, PB, lock out hubs, \$8,700. 717-733-2873

1977 Dodge Club Cab, dual wheels, flat bed, 5th wheel hookup, 4 spd., 400 motor, excellent condition. Sells with/without 1970 Western trailer, 18', suitable for cattle or horses, in excellent condition. 703-253-5435

'78 Ford custom F150 PU, 302, 3 speed, PB, green, good condition, \$2,475. 717-626-5033.

'84 Chevy HD C20, 350 auto., PB, PS, AM-FM, 8,600 GVW, 40,000 miles, \$6,500. 717-733-2873

'83 Ford F250, 6.9 diesel, auto., PB, PS, AM-FM, dual tanks, 8,600 GVW, 18,000 miles, charcoal & silver, like new, \$7,950. 717-733-2873

FOR SALE: 1982 Ford F100 pickup, straight 6-300 engine, automatic, P. steering, PB, custom made cap, excellent condition. \$4,300. 717-733-4625 after 7PM.

'86 Chevy C30, dual whl. w/8' Contractors dump body, 350 4 spd., PS, PB, dual tanks, 10,000 GVW, 2,000 miles, like new, \$12,900. 717-733-2873

'86 Ford F350, dual whl., cab & chassis, 6.9 diesel, 4 spd., PS, PB, air, AM-FM, dual tanks, 84" CA, 11,000 GVW, 3,000 miles w/balance of factory warranty, \$12,700. 717-733-2873

\$500 each. Farm trucks. All in running condition. 1954 Chev. 12' stake body; 1959 Ford 12' stake box body; 1955 GM V-8, 14' stake box body. \$500 ea. 215-757-7646 Bill or Tom.

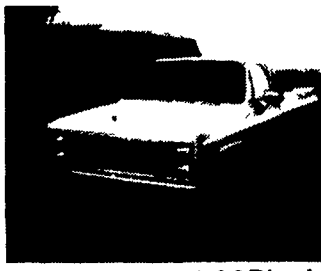
'72 GMC tree truck, 12" side chipper, dump body, \$3,800 or Best Price. 215-885-1032.

'74 Dodge 300 dual whl. w/10' cattle body, 400 4 spd., PS, PB, 80,000 original miles, 1 owner, \$2,200. 717-733-2873

'75 GMC 15 PU Sierra Grande 360, PS, PB, AT, green, white, good condition, \$2,475. 717-626-5033.

'78 Chev crew cab, 4 spd., high mileage, mechanically good, \$1,700. 717-687-0204 after 6 p.m. Sat. or Sunday before noon.

USED TRUCKS



'86 GMC 1/2 Ton 4x4, 6.2 Diesel, Auto., PS, PB, Air, Cruise, Power Windows & Locks, Tilt Wheel, Dual Tanks, AM/FM Stereo, 4,000 Miles. **\$13,900**

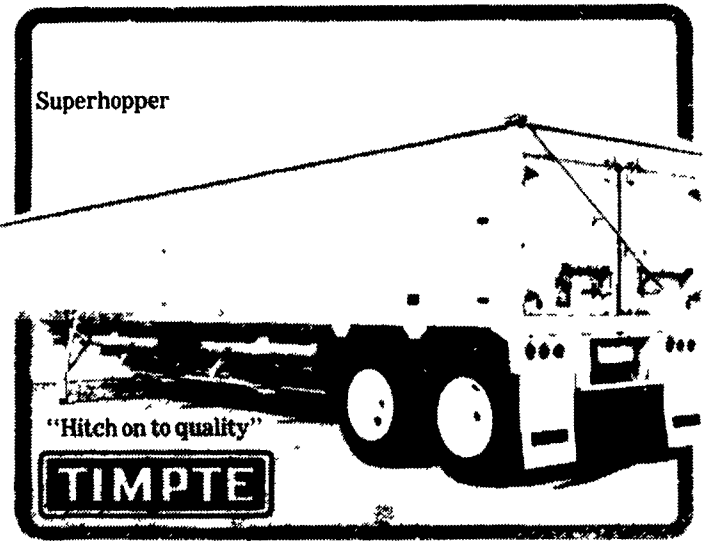


'84 Ford F-250, Heavy Duty, 6.9 Diesel, PS, PB, AC, 4 Spd., AM/FM, Dual Tanks, XLT Package, 50,000 Miles. **\$8,800**

MARTIN'S AUTO SALES
725 E. Main St., New Holland, PA 17557
(717) 354-9967

TRAILERS FOR SALE:
Six 40' flats; Fontane drop decks; 40-60' stretch flat; two 45x13'6" Strick vans; 42' Tempte insulated van, spread on air; 45' Gindy open top.
Keens, 717-626-5420.

BUY A 1987 TIMPTE LIGHTWEIGHT GRAIN HOPPER NOW



Got Grain? Then get the trailer that is TimpTE tough... the Super Hopper. It's not only built to take it...it's also built to cut fuel costs. The Super Hopper is lightweight and aero-dynamically designed to reduce wind drag. When there's grain to be hauled, TimpTE does the haulin' best and pulls a lot easier than the rest.

New TimpTE, 42'8"x65" Sides, Hopper Bottom In Stock

USED HOPPERS FOR SALE

- 1982 w/40'x65" Sides, Aluminum TimpTE Grain Hopper
- 1980 w/42'x65" Sides, Aluminum, Dorsey Level Floor
- 1965 w/40'x65" Sides, Aluminum Fruehauf Level Floor

M.H. EBY, INC.
Box 127, Blue Ball, PA 17506 (717) 354-4971

1984 Suburban, 454 V8, Auto., PS, PB, Front & Rear Air, Ready To Tow... '13,995	1976 Chevy Blazer, V8, Auto., PS, PB, Factory Air, Runs Fine - Sold "As Is" Only... '2,495	1986 AMC Jeep Cherokee Pioneer, V6, Auto., PS, PB, Air, AM-FM Stereo Cassette, Roof Rack and Much More. 8,600 Orig. Miles... '14,995	1978 Chevy K10, 4x4, Short Bed, Runs Great, V8, 4 Speed, PS, PB, Needs Paint Work - "As Is" Only... '3,995
1984 Chevy K10, 4x4, V8, Auto., PS, PB, Short Bed, Gold Beauty... '10,995	1979 GMC C-2500, 4x4, Pickup, V8, 4 Speed, Factory Air, PS, PB, AM-FM... '7,495	1985 Ford Bronco, 4x4, 2 Tone Paint, Auto., PS, PB, Air, AM-FM Stereo, Must See - Like New... '13,495	1979 Ford F250, 4x4, V8, 4 Speed, PS, PB, XL Pkg., One-Of-A-Kind, 34,000 Orig. Miles... MUST SEE!
1985 Chevy K10 Blazer, V8, Auto., Overdrive, PS, PB, Power Windows & Locks, Tilt, Cruise, Silverado, All Black... '15,295	1978 Ford F250 Trailer Special, 8 Ft. Box, V8, Auto., PS, PB, Air, One Of-A-Kind '6,495	1979 Ford F250 Super Cab, V8, 4 Speed, Air, PS, PB, Trailer Ready... '6,995	1983 AMC Eagle Wagon, 4x4, Auto., Air, PS, PB, Stereo, Power Windows & Seats, and More... '8,495
1979 Chevy K10, 4x4, Auto., PS, PB, V8, Dual Tanks, Runs on LP or Reg. Gas. Need Driving Range? - This Is It!!!!... '6,995	<ul style="list-style-type: none"> • 2x4's, 4x4's, Pickups, Vans, Suburbans, Broncos Blazers, Jeeps...From \$995! • 6 Month, 6,000 Mile Limited Warranty On All* Vehicles - Reconditioned Inspected and Ready To Go! • Many More Not Listed - We May Have What You're Looking For - Call Our "800" Number <p>* Unless Specified Otherwise</p>		1979 Dodge Adventurer Window Van, 12 Pass., V8, Auto., PS, PB, Runs Fine - Sold "As Is" Only - 2 To Choose From... '2,495

★ 100 USED TRUCKS IN STOCK AT ALL TIMES! ★
12 Month - 12,000 Mile Warranty Available

CALL TOLL FREE 1-800-362-7655
OPEN 9 to 9 Mon. to Fri., 9 to 5 Sat.

RHODES Oldsmobile



SALES - SERVICE - LEASING
Rt 663 & Swamp Pike.
GILBERTSVILLE 215-327-3000



AREA'S LARGEST NON-FRANCHISED NEW & USED TRUCK DEALER

DON'T LET THIS SMALL AD FOOL YOU! THE WHOLE SHOW IS IN OUR FREE CATALOG. CALL OR WRITE US, NOW!!!

DON'T LET OUR LOW PRICES FOOL YOU ALL PRODUCTS ARE NEW & GUARANTEED

CAR - HOME - PORTABLE STEREO - CB'S - RADAR DETECTORS

PIONEER KE8181
'28⁹⁵
DON'T BE FOOLED Even Our Basic AM-FM In Dash Cassette Players Are New. No Rebuilds and Use the Advanced Bar Type Tuner.
w/ Auto Reverse w/Built In Equalizer **'54⁹⁵**
w/ Super Tuner III w/Digital Freq Check **'74⁹⁵**
MANY MORE STYLES TO CHOOSE FROM!
New For 1986 w/ Dolby NR BC Fully illuminated Faceplate 1B Chan. Preset Super Tuner III w/Digital Freq Check Scan Feature & Much More **'229**

AUTOBODY PARTS PAINTS & SUPPLIES

CHECK OUR LOW PRICE ON "1st LINE NEW" PARTS
FENDERS 73 80 Chev Tk 73 79 Ford Tk 72 85 Datsun Tk 72 83 Toyota Tk 77 82 Courier Tk 76 82 Chevette Choice \$39 95 each
DOORS 73 85 Chev Tk Choice \$89 95 each
ALSO AVAILABLE BUMPERS, HOODS FOR ABOVE & MANY OTHER CARS & TRUCKS



6x9 300W **'16⁹⁵**
ELECTRONICALLY TUNED AN FM MPX RADIO AND AUTO REVERSE STEREO CASSETTE PLAYER WITH 5 BAND GRAPHIC EQUALIZER 6 CHANNEL PRESET & SCAN
'19⁹⁵
MUCH MORE AVAILABLE
OVER 70 DIFFERENT CAR STEREO COMPONENTS IN STOCK TO CHOOSE FROM!!
DON'T FORGET OUR LOW PRICES ON PIONEER, JENSEN & CLARION CAR STEREO
Priced Far Below Retail
• JVC TYPE 200 Watt 4 Way Each With Removable Black Cloth Face Covers and Woodgrain Cabinet Finish Cabinet Measures 26 In High x 15 In Wide x 10 In Deep Quick Connect Push Button Wire Connectors On Back PAIR \$139
• PIONEER TYPE 400 Watt 7 Way Each Otherwise Same As Above PAIR \$169



MIG WELDERS

115 Volt/220 Volt Call For Details Starting At **\$299**

TOOLS & EQUIPMENT

Mobile Crane
No. AK360 4190 LB \$349
ST6000T 6000 LB \$499
51800T 10000 LB \$1199

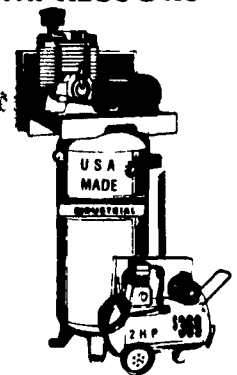
PERFORMANCE & 4x4 PARTS & ACCESSORIES

4 In LIFT
INCLUDES ALL HARDWARE & SHOCKS
• 73 80 Chev Blazer Ton Pickup Suburban 4x4
'369⁰⁰
ALL POPULAR MODELS AVAILABLE

*** SANDBLASTERS ***
MODEL 100 PICTURED
Our heavy duty Blaster model is sized to fit most larger jobs. It's larger capacity allows you the flexibility to handle all types of jobs.
THIS UNIT FEATURES 10 ft. of sandblast hose
• Holds 100 lbs. of No. 1 or No. 2 silica sand or any dry sifted abrasives • 6 ceramic tips (2 ea 3/32 1/8 5/32) • Deluxe hood and funnel • 6 in. wheels for easy mobility • Moisture separator pressure gauge and conventional gun valve
• Working pressure 40 to 150 P.S.I. using 7 cu ft. or air per minute at 180 P.S.I.
#100 \$249 #70 \$199 #40 \$139
All Models Are Pressure Type

AIR COMPRESSORS

• 5 HP 60 Gal Vert Tank Light Industrial Duty Single Stage U.S. Made **'599**
ONLY
• 5 HP 60 Gal Vert Tank Med Industrial Two Stage Pump 175 P.S.I. U.S. Made **'799**
ONLY
• The King 5 HP Full Industrial 80 Gal Vert Two Stage 775 R.P.M. Pump All Cast Iron Cyls With Magnetic Starter All Tanks A.S.M.E. Coded This Is Not A Misprint **'999**
ONLY



TOOL SHED OF AMERICA

DEPT. 002, 4294 EAST HARRISBURG PIKE
MIDDLETOWN, PA 17057
(717) 944-0318

DIRECTIONS TO OUR NEW LOCATION - Go East from Middletown Square on Main St (Rt 230) 4 miles on right or take Exit Rt 230 & 341 off of Rt 283 between Harrisburg & Lancaster & go East on 230 1 1/2 miles on right (we're about 20 minutes from Harrisburg)
HOURS Mon Thurs 9-5 Fri 9-9 Sat 9-5 Sun 11-4