

Dairy Nutrition Schools Scheduled

The Penn State Cooperative Extension Service is offering a dairy nutrition school in three different locations in southeastern Pennsylvania. The school will be held on three successive Tuesdays.

- DAY 1**
 9:45 Registration, Milk, Coffee & Pastries
 10:00 "It's What's Inside That Counts!" - Joe Hlubik, PSU Extension Dairy Scientist
 11:30 "What Is The Bottom Line?", Berks - Clyde Myers; Lancaster - Glenn Shirk; York - Shannon Neumann
 12:00 Lunch
 12:45 "Does Your Ration Include What The Cow Needs?" - Joe Hlubik
 1:45 "Have You Found The Bypass (Protein) and Energy Control (Carbohydrates)?" - Joe Hlubik
 Questions
 2:45
DAY 2
 9:45 Milk, Coffee and Pastries
 10:00 "Treating the Expecting Milker Properly" - Jud Heinrichs, PSU Extension Dairy Scientist
 11:00 "A 20,000 lb. Plus Producer Needs The Right Start!" - Jud Heinrichs
 12:00 Lunch
 12:45 "My Dry and Fresh Cow Program!" - Panel of Local Dairywomen
 1:15 "Forages - The Key To Your Feeding Program" - Jud Heinrichs
 Questions
 2:45
DAY 3
 9:45 Milk, Coffee and Pastries
 10:00 "You CAN Balance Your Rations!" - Dick Adams, PSU Extension Dairy Scientist
 12:00 Lunch
 12:45 "Quality Control Of Your Ration Yields 20,000 lb. Producers" - Dick Adams
 1:30 "Dairymen's Feeding Mistakes" - Panel of Feed Company Nutritionists
 2:15 "The Economics of Ration Formulation" - Dick Adams
 2:45 Questions

on January 20, 27 and February 3 at the Berks County Agricultural Center in Berks County; January 21, 28 and February 4 at Harvest Home Restaurant in Lancaster County, and January 22, 29 and February 5 at the York County 4-H Center in York County.

This school is designed for dairy farmers and service personnel interested in expanding and updating their knowledge in dairy nutrition.

Cost of the three-day program is \$20 which includes registration, handouts and meals. Registration deadline is Jan. 15, 1987.

For more information contact the dairy agent in your county or Shannon Neumann, York County Extension Service, 118 Pleasant Acres Road, York, PA 17402, telephone (717) 757-9657; Glenn Shirk, Lancaster County Extension Service, 1383 Arcadia Road, Room

1, Lancaster, PA 17601, telephone (717) 394-6851; or Clyde Myers, Berks County Extension Service, Berks County Ag Center, P.O. Box 520, Leesport, PA 19533, telephone (215) 378-1327.

Virginians Take Cell Counts

(Continued from Page A20)

respond to an antibiotic intermammary treatment, the dairyman will use a compatible antibiotic intravenously.

"This is where I'm different," Frye admits. "I treat a lot longer than most people - usually two to three milkings after the last clinical sign of mastitis is gone. I've found I don't get quite as many flare-backs by doing it that way. On an average I lose 10 days of milk on a cow I treat with a herd average of 65 pounds a day at \$12 a hundred plus medicine, it's expensive." But still worth it, he feels.

"Cows with lower cell counts give more milk and mastitis can cut your production considerably. He's also contagious, expensive and time consuming. It takes longer to milk them out and treat them."

Like the other dairymen, Frye will sanitize the milkers between healthy and infected cows and after milking each infected animal. He also treats all of his dry cows in each quarter and tries to reduce any stress by providing clean facilities and well balanced rations.

"It all ties in together and it's whatever you feel works best for you," he concludes.

Pennsylvania Milk

Consumption Patterns

(Continued from Page A22)

fluid milk consumption will decrease with the greatest negative effect on whole milk.

Seasonal Influence

Season of the year was thought to have an important influence on milk consumption. Other studies have found that milk consumption tends to be higher in some times of the year than in others. Certainly, one important time is when school is in season.

Time of the year was separated into three periods: January through April, May through August, and September through December. Milk consumption in the first and third period was measured against milk consumption in May through August which are typically associated with the lowest consumption levels of the year.

Editor's Note:

To be continued. The results of Jack Kirkland's study on milk consumption will be printed in next week's issue.

Vegetable Meeting Scheduled

NEW HOLLAND - Eastern Lancaster County Adult Farmer Program instructor, Don Robinson, will present an educational program on Vegetable Management at the Leola Produce Auction meeting at the Bareville Fire Hall on Tuesday, Jan. 6, 1987, beginning at 12:30 p.m. Robinson will discuss results of the tomato, pepper, and cantaloupe research plots the Adult Farmer Program conducted this past growing season. Plot results on tomatoes using trickle irrigation yielded over 55 tons of marketable tomatoes at a value of \$20,000 per acre.

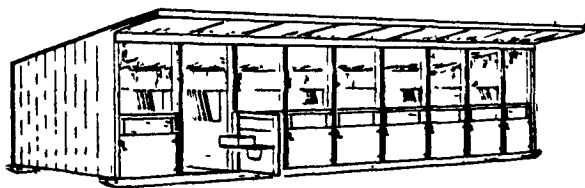
In addition to research results he will discuss packaging and displaying produce to enhance its

marketability, how to develop a marketing plan, lengthening the growing season with tunnels, row covers, and other devices, precautions growers should use with rotations, use of manure and excessive fertility, spacing of plants on the row, and an outlook on what produce will be needed at the auction next season.

The produce auction management will also update growers on the auction boxing and marketing policies for the coming season.

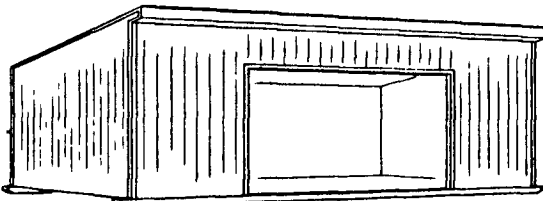
All interested growers are invited. The Bareville Fire Hall is located on route 23 between Leola and New Holland. For additional information call 656-9592 or 354-4525.

YOUR FIRST CHOICE FOR AG PRODUCTS



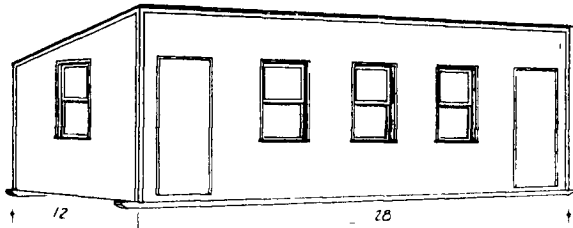
CALF CONDO

Available in 3, 4, 5, 7 and 9 stalls, fully assembled on treated skids. 3'x8' stalls each have easy access feeders. Painted.



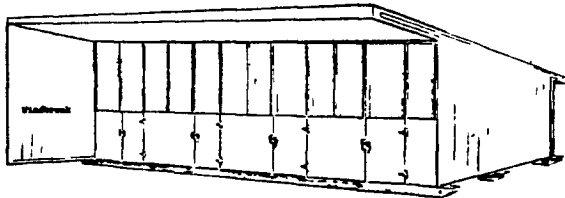
CATTLE SHELTER

Constructed of exterior rough sawn siding on treated skids. Shelter is painted and includes galvanized steel roofing and spouting.



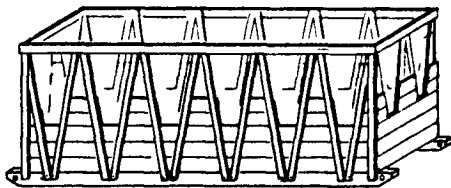
MULTI-PURPOSE BUILDING

Constructed of exterior rough sawn siding on treated skids. Galvanized steel roofing. Floor system - 2x6 floor joists & 3/4" T&G plywood.



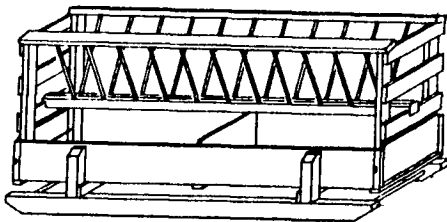
FARROWING HOUSE

Treated skids. 1-3/8" Oak floor. Removable partitions. 4 stalls. Feed panels from rear.



TREATED "V-NECK" HAY FEEDER

Completely constructed of treated yellow pine lumber. Available from 10'-20' lengths. On skids for easy movability.



WOODEN OAK FEEDER TROUGH w/HAY RACK

Available in 8' and 10' lengths. On skids for easy movement.

We Will Continue 1986 Prices Through

February 1987. Call Dave At (717) 483-6386

To Place Your Order. We Are Located In Mifflin County.



Allensville Planing Mill INC.
 True Value Hardware Store

PUSH A BUTTON - GET INSTANT HEAT

It's Cool To The Touch! **WICKLESS HEATER** **FREE**

Wickless Price Starting At \$219.00 - Reg \$349.00

KEROSENE HEATERS and FANS
 20,000 BTU SALE
\$97

COMFORT GLOW Wick Heater Reg \$189.00
 • Burns 14 Hours
 • Heats 800 sq ft

LARGE VARIETY OF WICKS IN STOCK

LEOLA FIREPLACE SHOP
 93 W Main St. Leola PA RI 23 & 72 6 mi East of Lanc
 N W & F 10 8 T & T 10 6 Sat 9 5 (717) 656 6408