

Adequate And Safe Electrical Systems For Farms

UNIVERSITY PARK - Conducting a regular maintenance program on your farm electrical system can help you detect potential problems before they happen. You don't need expensive equipment or years of training to

make many checks on your own.

Catching problems early could help you avoid the potential dangers of the improper use of electricity. Those include electric shocks, fires, stray voltage and

poor lighting leading to reduced animal and poultry production. Inspect your system on a regular basis. Repair any deficiencies before they give you trouble. Upgrade your system by installing new circuits where needed and by using the proper electric wiring and enclosures.

You can use the following items as a maintenance program checklist to determine the adequacy of your electrical system. If you mark NO to any of the questions, check the situation.

When major changes are needed in the electric system, bring in a competent electrical contractor with knowledge and experience in the desired application area to do the work. The electric utility, local electrical inspection agency or private inspection agency should be contacted for assistance in planning the changes.

Spiders: Nature's Pest Control Agents

(Continued from Page D6)

Dichlorvos strips (vapon) give good control for several months in rooms with minimal ventilation.

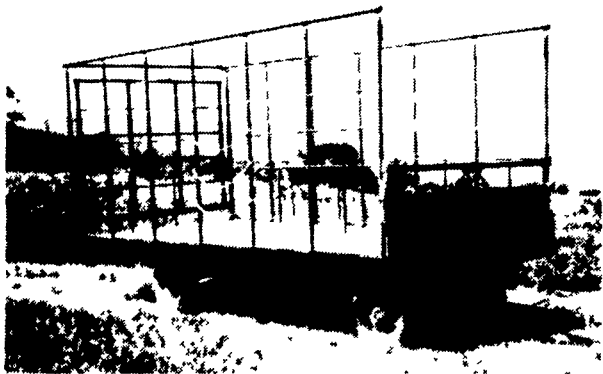
Residual sprays for crack and crevice application should contain bendiocarb, carbaryl (sevin), chlorpyrifos (Dursban), diazinon, malathion or propoxor

(Baygon).

The entomologist does not recommend extensive chemical treatment outdoors for spider control. "Spiders are an important part of the natural population," he says. "Their elimination may allow undesirable insects to multiply."



BEST BUY of the YEAR



- 6" Steel Main Beam
- 2" Vertical Tubing Drilled so that the 1" Horizontal tubing extends Full Length of Wagon
- Front-Side and Rear Loading and Unloading
- 2x8 Pressure Treated Lumber Floor
- 2x6 Oak Cross Beams
- Beds are 8' wide, available in 16, 18 or 21' lengths. Racks are 90" high.
- NEW FEATURE: 6" Channel across back for pushing wagon without damaging bed.

FOR FURTHER INFORMATION, CALL YOUR LOCAL DEALER:

LOST CREEK IMPLEMENT
Oakland Mill, PA
717-463-2161

MELROSE FARM SERVICE
Greencastle, PA
717-597-3138

KELLER BROS.
Lebanon, PA
717-949-6501

DUNKLE & GREIB
Mill Hall, PA
717-726-3115

WALTER G. COALE, INC.
Churchville, MD
301-734-7722

TOBIAS EQUIPMENT CO., INC.
Halifax, PA
717-362-3132

NORTHEAST DISTRIBUTING
West Clifford, Pa.
717-222-9020

VALLEY IMPLEMENT SALES
Harrisonburg, VA
703-434-9961

CHAMBERSBURG FARM SUPPLY
Chambersburg, PA
717-264-3533

OXFORD GREENLINE, INC.
Oxford, PA
215-932-2753

PAUL SHOVER'S, INC.
Loysville, PA
717-789-3117

A.B.C. GROFF
New Holland, PA
717-354-4731

CARLISLE FARM SERVICE
Carlisle, PA
77-243-4419

CLARK'S FARM SUPPLY
Williamsport, PA
717-494-0060

Manufactured By

CLW MANUFACTURING, INC.

R.D. #2, Box 8
Newburg, Pa. 17240
717-423-6794

ELECTRICAL SYSTEM MAINTENANCE CHECKLIST

ITEM	YES	NO	NOT APPLICABLE
------	-----	----	----------------

OVER-CURRENT PROTECTION (Fuses, circuit breakers)

- Does your system have capacity to operate all equipment?
- Do some circuits continually trip the circuit breaker or blow the fuse?
- Have you maintained the proper size fuse for the circuits?

GROUNDING

- Is your grounding electrode (rod) properly connected to the electric system?
- Are you using grounding type receptacles at convenience outlets?
- Are all pieces of electrical equipment grounded?
- Have you maintained the ground connection on portable equipment and extension cords?
- Do you connect your auxiliary generator to ground?

WIRING

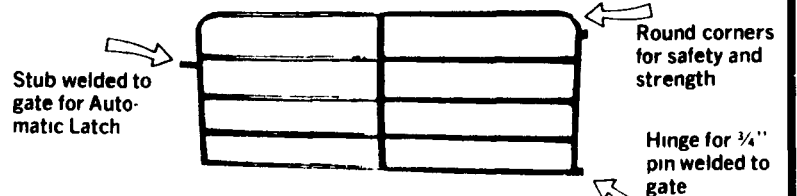
- Is all wiring and conduit well fastened and undamaged?
- Do you use extension cords only for emergencies, tool operation, and short time periods?
- Are you using moisture-resistant wiring methods in damp locations?
- Have you removed all disconnected wiring?
- Are the panelboards protected from the weather?

EQUIPMENT

- Are you using enclosed lighting fixtures in areas where protection is needed?
- Are the electric motors in your system easy to start? (They do not require spinning the pulley, etc.)
- Are the guards in place around the drive systems?
- Have you lubricated the motor bearings on a regular basis?
- Have you cleaned out electric enclosures? (Use compressed air with power off.)



GATES and FENCING



Standard Heights For Gates & Fencing:

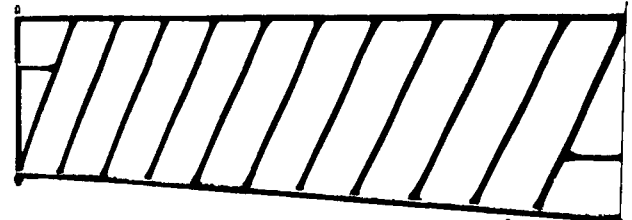
- 38" High - 4 Bar • 48" High - 5 Bar • 54" High - 6 Bar

NOTE:

- 13 Ga. steel 15% heavier than 14 Ga. steel
- 13 Ga. steel 45% heavier than 16 Ga. steel
- 13 Ga. steel 85% heavier than 18 Ga. steel

All Gates & Fencing Made Of 1.9" Outside Diameter High Yield Steel Tubing With 13 Ga. Wall

SLANT BAR FEED THRU FENCE



Custom Built To Any Length

