

# Dairy and Livestock Sales

## Public Auction Register

Closing Date Monday 5:00 P.M.  
of each week's publication

FRI FEB 13 - 9AM Farm Eq New Holland Sales Stables, Inc., New Holland, PA. Abe Diefenbach, Manager

SAT FEB 14 - Dairy Cows and Farm Eq Located along Cocalico Rd between Scheoneck and Cocalico, RD 2, Denver Edwin W and Mary Ann Zeiset, Owners Paul Martin and John D Stauffer, Auctions

SAT FEB 14 - Granville

Overly Estate Household Sale, Wakefield area J Everett Kreider, Auct

SAT FEB 14 - 9AM Horses and Horse Drawn Machinery. Located in Mifflin Co between Belleville and Milroy, PA. 1/2 mi E. of Barrville along Back Mt Rd John B Hostetler, Jr and Ner Hostetler Mark Glick, Auct

MON FEB 16 - 10:30AM Complete Liquidation of

the largest grower-packer of potatoes in New Jersey J&B Potato and Grain Farms, Inc. Hightstown, Monmouth Co., New Jersey, Owners Pirrung Auctions, Inc

TUES. FEB. 17 9:30AM Farm Mach, Mules, HH. 1 mi E of Intercourse, PA Samuel L & Rebecca Esh, Owners Steve Peterheim & Steve Jr, Auctions

WED FEB. 18 - 9:30AM Farm Mach, Horses, HH 1/2 mi S Vintage Jacob S & Rebecca H Beiler, Owners Steve Peterheim and Steve Jr, Auctions

THURS FEB 19 - Farm Eq & Tools Allen Hoover, along Rt 82, approx 5

mis. E of Hiey Brook Nevin Martin & Lewis Groff Auctions

THURS FEB 19 - 9AM Farm Equip Located between Soudersburg & Paradise at 2969 Lincoln Hwy, Rt. 30, 8 miles East of Lancaster Terms By T J Wheary & Sons Auctions Robert E & Jeffrey R Martin & Blaine Rentzel

THURS FEB 19 - 9AM PA Draft Horse & Mule Association Sale Pennsylvania State Farm Show Building, Corner of Cameron & McClay Sts, Harrisburg, PA

THURS FEB 19 - 9:30AM Longview Farms (Punk Bros), Rt 526, Imlaystown, NJ Farm Mach., used on 1000 acre potato & grain farms Sale by Col Fred R Daniel Auctions, Inc

THURS & FRI FEB 19 & 20 - Large Two Day Sale of

Farm Eq, etc., at our place of business, 1 mi E of Marion, PA, off Rt. 81 Ralph W Horst, Manager.

FRI FEB 20 - Coin Sale Winterstown Fire Hall, York Co J. Everett Kreider, Auct

FRI FEB 20 - 10AM Horse Sale New Holland Sales Stables, Inc., New Holland, PA Abe Diefenbach, Manager

SAT FEB 21 - 9AM Farm Toy Show and Auction Located at the Best Western Inn, in the Mariposa Ballroom 1245 Harrisburg Pike, Carlisle, PA Sponsored by the Cumberland Valley Tractor Pullers Mark K Keller, Auct

SAT FEB 21 - Tack 9:30AM and Horses 11AM at the Belleville Livestock Mkt, Belleville, PA Draft Horses, Mules and Driving Horses Mark Glick, Auct

SAT FEB 21 - 11:30AM

Tractors, Farm Eq, Lampeter, Earl Simmons, Located between Lancaster & Strasburg near Auct. Owner. Cloyd Wenger.

## FARM TOY AUCTION

New Year's Day - 11:00 a.m. to 5:00 p.m.

(Weather Permitting)

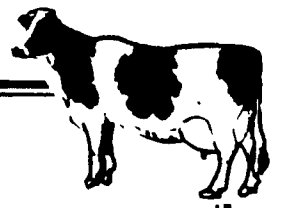
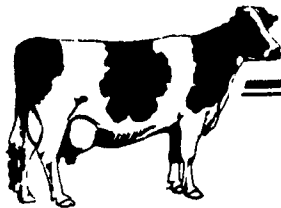
At New Holland, Pa. Fire Hall East Main Street, On Route 23

Food available. Many quality older farm toys, plus some newer collector toys. Deeres, Farmalls, Oliver, Masseys, Allis, New Idea, New Holland, Ferguson, Ford, approx. 500 items.

Auctioneer - Dale Stoltzfus AU-90GL

Auction Manager - Dave Nolt Info. (717) 768-3554

New toys, parts, and books available for private sale.



# SHORT NOTICE

## 90 HEAD TOP REG. HOLSTEIN AUCTION

### 1000 Gal. Bulk Tank - Pipeline - Elec. Feed Cart

### FRIDAY, JANUARY 2, 1987 AT 11:30 A.M.

At S&S & Sons Inc. Dairy Farm, (the former Robert Connolly Cedar Hill Farm Herd). Orams Lane Rd., off Rt. 31 in the edge of the town of Oxford, New Jersey. From Pa., use Rt. 78 to Rt. 57 to Rt. 31 north. From NY State, use Del. Water Gap to Rt. 46 to Rt. 31 south.

#### 11:30 A.M. - Barn Equipment

Mueller 1000 gal Bulk Tank; Fre Heater; DeLaval 80 Cow 2" Pipeline SS; Pump; 4 Westfalia Milkers w/Pulsators; Weaverline Electric Feed Cart, 6 mos old; XR-16 Semen Tank; Breeding Board; plus more.

#### 12 NOON - 90 Head Of High Powered Top Bred DHIA Tested Holsteins:

70 Mature Cows; 20 Heifers from calves to 9 months old! **Breeding the Best!**- 11 by Milestone; 10 by Boot Nick; 2 Tony's; 2 Pete's; 5 by Sexation; 3 by Frosty; Kingpin and others. Cows bred to top Sire Power Bulls! **Classification**- 1- 2E Ideal Leader Dtr w/25,600 M; a 86 Pt Money Maker w/19,061 lbs; a VG 19,000 lb Tradition; a 23,000 lb VG Kingpin; 2- 20,000 lb. VG Milestones; 2- VG Boot Nicks up to 22,000 lbs; a 87 pt Arlinda Commander; plus many young G+ Cattle. Many fresh and springing and bred for year around! Some top cows purchased at Globe Run Farm Dispersal selling here. (Herd is 90% calfhood vaccinated).

#### DHIA Records

Previously this herd held a 19,000 lb herd ave. for years. Current Rolling Ave a little over 16,000 lbs. Cows are presently not being pushed with protein! A Super Powerful Group of Cattle with top breeding and production! Many young with strong quality udders and tremendous size. Heifers are well bred with quality. 17 head selling from 19,000 to 25,600 lbs milk and over 800 lbs fat. In the past 3 years the Registered cows have been better buys than the grades. Selling in an area where there are very few farmers. Plan to attend this Top Reg Holstein Auction! Short Notice Sale! Catalogs at Ringside only.

#### Inspection:

Sale Day Only! Cattle all pregnancy examined and Nasalgen! 30 day TB & Blood Tested for Interstate! **Blizzard Date:** Jan. 3, 1987. Sale held in Tent! Carl Baylor- Herdsman. S&S & Sons Inc. Farm. **Terms:** Cash or Good Check Sale Day w/Proper ID.

### CO-MANAGED AND SOLD BY

COL FRED R. DANIEL AUCTIONEERS INC.  
Neshanic Sta., N.J.  
201-369-4784

MEL MANASSE  
Whitney Point, N.J.  
607-692-4540 or NY  
only 1-800-MANASSE