



HAY MARKETS

No. 2-y range 2.58; Barley No. 3 range 1.35; Oats No. 2 range 1.13; Soybeans No. 1 range 4.65; #New Ear Corn range 43.60.

Year Ago
 Corn No. 2-y average 2.49; @Wheat No. 2-y average 3.05; Barley No. 3 average 1.62; Oats No. 2 average 1.11; Soybeans No. 1 average 4.92; #New Ear Corn average 57.31.

Regional Hay

Eastern, Pa. On-Farm Sales
HAY & STRAW MARKET FOR EASTERN PA. (All Hay No. 2 and better prices paid by dealers at the farm and per ton.) - Hay and Straw steady.

Alfalfa 90.00-110.00; Mixed Hay 75.00-100.00; Timothy 75.00-100.00; Straw 65.00-90.00; Mulch 30.00-40.00.

Lancaster Co. Auctions

SUMMARY OF LANCASTER CO. HAY AUCTIONS For Week Ending 12/19. **PRICES PER TON:** LOADS: 306 Hay, 108 Straw, and 19 Ear Corn.

Alfalfa 92.00-150.00; Mixed Hay 80.00-133.00; Timothy 91.00-130.00; Straw 90.00-139.00; Ear Corn 63.00-80.00.

Central Pa. Hay Auctions

SUMMARY OF CENTRAL PA. HAY AUCTIONS For Week Ending 12/19. **PRICES PER TON:** LOADS: 122 Hay, 22 Straw, and 8 Ear Corn.

Alfalfa 90.00-153.00; Mixed Hay 65.00-125.00; Timothy 75.00-125.00; Straw 69.00-105.00; Ear Corn 50.00-71.00.

King's Hay

Kirkwood, Pa. Tuesday, Dec. 23, 1986
Report supplied by Auction
 28 loads.

Alfalfa, 112.00-152.00; Alfalfa Mix, 118.00-134.00; Mixed Hay, 96.00-134.00; Timothy and Timothy Mix, 99.00-125.00.

7 loads Straw, 107.00-120.00; 1 ld. Ear Corn, 70.00.

New Wilmington Hay

New Wilmington, PA. Friday, Dec. 19, 1986
Report Supplied by Auction

Alfalfa: 75.00-128.00; Mixed Hay: 54.00-97.00; Timothy: 66.00-84.00; Clover: 72.50-99.00; Straw: 60.00-69.00; Ear Corn: 58.00-70.00; Oats: 1.20-1.47/bu.

New Holland Hay

New Holland, PA Monday, Dec. 22
Report Supplied by Auction
 285 loads. Compared to last week's prices, Hay and Straw 5.00-10.00 lower.

Ear Corn was 5.00 higher and oats steady; Alfalfa, 10 at 125.00-150.00, 38 at 100.00-125.00, 20 at 54.00-100.00.

Mixed Hay, 7 at 120.00-132.00, 34 at 90.00-120.00, 17 at 67.00-90.00; Timothy, 27 at 100.00-134.00, 7 at 90.00-100.00.

Clover, 4 at 80.00-132.00; Mixed Grass and Stubble Hay, 87.00-110.00; Straw, 20 at 110.00-125.00, 38 at 100.00-110.00, 16 at 88.00-100.00, a few unusable at 88.00; Ear Corn, 9 at 68.00-80.00, 1 at 54.00.

Soybean Stalks, 66.00; Corn Fodder, high moisture, 35.00; Oats, 6 at 1.65-1.80 bu.; Wood, 25.00-44.00 ld.

Dewart Hay

Dewart, PA. Monday, Dec. 22, 1986
Report Supplied by Auction
 19 loads Hay, 51.00-96.00; 3 loads Straw, 75.00-76.00; 15 loads Wood, 29.00-71.00 ld.

Pa. Grain

Monday, Dec. 22
Report supplied by PDA
COMPARED WITH LAST MONDAY'S MARKET FOR SOUTHEASTERN, CENTRAL AND SOUTH CENTRAL PA.: Corn steady to .05 lower; Wheat and Soybeans unevenly steady; Barley steady; Oats steady to .20 higher; Ear Corn steady to strong.

Southeastern Pennsylvania

Corn No. 2-y range 1.65-1.95, average 1.80; @Wheat No. 2 range 2.35-3.23, average 2.79; *Contract for Harvest 2.35-2.59; Barley No. 3 range 1.30-1.50, few reported 1.65, average 1.44; *Contract for Harvest 1.30; Oats No. 2 range 1.15-1.50, few reported 1.70; average 1.39; Soybeans No. 1 range 4.60-4.77; average 4.69; *Gr. Sorghum #2 range 1.60, average 1.60; #New Ear Corn range 40.00-55.00, average 47.64.

Central Pennsylvania

Corn No. 2-y range 1.65-1.90, average 1.77; @Wheat No. 2 range 2.30-2.70, average 2.52; Barley No. 3 range 1.25-1.30, average 1.29; Oats No. 2 range 1.00-1.35, average 1.16; Soybeans No. 1 range 4.40-4.75, average 4.57; *Gr. Sorghum #2 range 1.50, average 1.50; *+Buckwheat range 8.50-9.50,

average 9.00; *Old Ear Corn range 43.00-55.00, average 48.00; #New Ear Corn range 36.00-45.00, average 39.33.

South Central Pennsylvania

Corn No. 2-y range 1.70-1.95, average 1.82; @Wheat No. 2 2.30-2.60, average 2.44; Barley No. 3 range 1.20-1.60, average 1.39; Oats No. 2 1.20-1.35, few reported 1.50, average 1.30; #New Ear Corn range 45.00-50.00, average 51.71.

Western Pennsylvania

Corn No. 2-y range 1.45-1.95, M 1.60-1.80, average 1.72; @Wheat No. 2 range 2.20-2.40, average 2.30; Oats No. 2 range .90-1.55, average 1.23; *Old Ear Corn range 50.00-55.00, average 52.50; #New Ear Corn range 35.00-49.00, average 42.00.

Southeastern, Central & South Central Summary

Corn No. 2-y range 1.65-1.95, average 1.79; @Wheat No. 2-y range 2.30-3.02, average 2.63; Barley No. 3 range 1.25-1.50, average 1.38; Oats No. 2 range 1.00-1.50, average 1.27; Soybeans No. 1 range 4.40-4.77, average 4.64; #New Ear Corn range 40.00-55.00, average 46.75.

Month Ago

Corn No. 2-y range 1.78; @Wheat

48% Soybean Meal, **\$203.80**
 Distillers Grains, **\$169.50**

Per Ton — Delivered
EVEN LOWER PRICES FOR LARGER QUANTITIES.

Buy up to 11 tons and save more! No extra charge to blend these ingredients

NOTE We can sell for less because we sell only to people who pay promptly

WALKER COMPANY

Gap, PA 17527

717-442-4169 (Collect)

York County Livestock Sales Ltd.

P.O. BOX 243 • FAWN GROVE, PA 17321
 (717) 993-2564

HAY SALE 10 A.M.
JANUARY 3, 1987

York County's Only Livestock Auction

On PA Route #24 between Stewartstown and New Park

All Kinds of Livestock Sold on Commission
 GWALTNEY OF SMITHFIELD
 Open Every Monday - Hogs - 6 00 a.m. - 12 noon
 Auction - 7 00 p.m. - 7

Buyers - Livestock Producers - Farmers
 We Need & Appreciate Your Patronage

Stan & Mary Nagle - Owners
 Home Phone: (215) 566-3239

NEW HOLLAND SALES STABLES, INC. - THE ACTION AUCTION

MONDAY



EARLY BIRD HOG SALE

7:30 AM
 For Your Protection Your Hogs Must Be Identified

10:00 AM



11:00 AM



HAY STRAW GRAIN

1:30 PM
BEEF SALE
CALF, SHEEP, GOATS



WEDNESDAY

11:00 A.M.



HEIFERS, BULLS

NOTICE

Beginning Dec. 31 Sale Starts At 11:00 AM

NEW HOLLAND SALES STABLES, Inc.

12 Miles East of Lancaster
 on Route 23, New Holland, Penna

The Action Auction
 717-354-4341

Mgr - Abe Diffenbach - 717-393-4464
 Norman Kolb - 717-397-5538
 Field Representatives
 Alan Diffenbach 717-656-9806
 Luke Eberly 215-267-6608 - 738-1865

WEDNESDAY - 1:30 P.M.
FEEDER PIG SALE



We endeavor to keep our barns cleaner than yours. State graded until 12 Noon

THURSDAY

10:00 AM

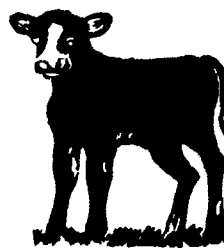


BULLS -

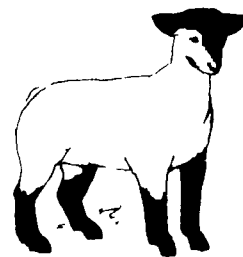
STEERS -
 BEEF COWS

2:30 P.M.

CALVES



SHEEP GOATS



Market your livestock thru New Holland Sales, your neighbor does
Pick-up your check before you leave