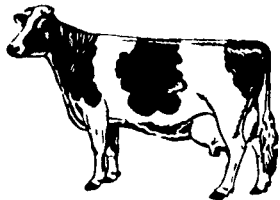


Major Dairy Sales And Dispersals Nationwide



Reports from two sales for the week of Dec. 15 to 23 showed 180 lots averaging \$1,132.50. The top prices at the sales were \$6,000 and \$4,650. Here is a brief look at the results of these sales.

HOLSTEIN
The ELKHORN NATIONAL CLASSIC SALE held in Wisconsin averaged \$1,715 on 89 head. The top price of the sale, \$4,650, came on a bred heifer by Valiant. She will freshen in April to

Walkway Chief Mark. Her maternal sister by Bootmaker classified 2E-90 GMD and produced a top record of 30,180 pounds of milk and 1,122 pounds of fat.

Her dam, sired by Rocby Ivanhoe Dina Charm, classified 4E-91 with a best effort of 20,810 pounds of milk and 967 pounds of fat for a 4.6 test. The next dam scored a VG-85 rating and produced two records over 23,000 pounds of milk and 1,040 pounds of

fat for a 4.5 test. An Excellent 5-year-old by Valiant sold for the second best price of \$4,600. She will freshen in January to Ned Boy. She registered a top record of 19,140 pounds of milk and 1,014 pounds of fat for a 5.3 test as a 3 year old. Her dam, by Hagemans Temple, classified VG-87 with a best effort of 18,110 pounds of milk and 895 pounds of fat.

Keith Stump handled the auctioning assignment and Alvin Piper Associates managed the sale.

The JOHN AND BOBETTE MAHLKUCH COMPLETE DISPERSAL held Wisconsin

averaged \$1,350 on 91 lots. Topping the sale was a 3 year old cow by Valiant. Due to freshen in March to Tradition, the unclassified cow sold for \$6,000. She is entered in the Wisconsin Futurity for 1987. She sold on her own merit with not contracts or guarantees. In her first lactation she produced a record over 18,000 pounds of milk and 650 pounds of fat. The dam, a VG-87 Elevation daughter, produced a top record of 21,110 pounds of milk and 884 pounds of fat with a 4.2 test in 365 days. A bid of \$3,500 ranked as the second best price of the sale.

Selling for this price was a 6 year old by Pawnee Farm Arlinda Chief. Classified VG-88, she is short bred to Ned Boy. She produced a best effort of 22,780 pounds of milk and 831 pounds of fat in 365 days. She is the third generation to score Very Good with over 22,000 pounds of milk. Morris and Hoskins managed and auctioneered the sale. Mahlkuch decided to disperse the herd for health reasons. Owner John Mahlkuch noted that his knees were falling and it reached the point where he couldn't milk the cows himself; he added it was time to move on.

National DHIA Annual Convention Slated

UNIVERSITY PARK — The 1987 National Dairy Herd Improvement Association Annual Meeting and Trade Show will be held in Philadelphia at the Adam's Mark Hotel on March 9 to 12.

Delegates to the meeting will address such issues as coping with the loss of herds from the buyout, dealing with a tight farm economy and new technology.

New this year to the convention is a special biotechnology conference. The conference features nationally-known speakers on the topics "Somatotropin" and "New Dairy Farm Technology." All dairymen and their families are invited to attend. The conference is slated for Monday afternoon, March 9, and Tuesday morning, March 10.

The 1987 convention will feature a trade show with a variety of innovative exhibits. These exhibits will show the latest in dairying equipment and services.

A Ladies Outing scheduled for Tuesday includes the Philadelphia Flower Show and a tour of Fairmount Park. The Thursday Ladies Tour includes Longwood Gardens

and the Brandywine River Museum. Two farm tours to either Chester County or Lancaster County farms are slated for Wednesday, March 11.

The Chester tour includes stops at Maplebound Farms. Maplebound, owned and operated by Donald Hostetter, maintains a rolling herd average of 19,550 pounds of milk and 720 pounds of fat on 87 cows. Hostetter's farm 140 acres of corn and 80 acres of hay. The herd is housed in a well-ventilated tie-stall barn.

Another stop includes Marlboro Mushrooms, owned by Charles and Jane Brosius. They ship mushrooms daily to the fresh mushroom markets of New York and Philadelphia. The operation includes 13 mushroom houses displaying all 13 weeks of the mushroom growing cycle.

The Nelson Stoltzfus farm, a 70 cow, family-owned and operated dairy, is slated for the convention tour. The dairy features a one year old, double four milking parlor with computer feeder and heat exchanger and oil reclaimer on milk pumps.

The final stop features the New Bolton Center. Convention visitors will have the opportunity to see the George Widener Hospital for large animals on the rural campus of the University of Pennsylvania Veterinary College. The recovery pool for large animals recuperating from anesthesia will be open for viewing.

The Lancaster County tour includes four stops. Oregon Dairy, a family partnership involving six brothers of the Hurst family, will display the dairy's milk processing plant, retail milk outlet, and full service grocery store and cafeteria. Hursts' farm consists of 450

acres and supports a 300-cow dairy herd and 200 heifers. The farm features a free stall barn with fence line feeding, oak plank stall beds and a ventilation system consisting of two rows of side opening panels, open ridge and circulating fans.

Their milking system consists of a 24-stall polygon parlor with automatic take-offs. A water treatment system is used for the herd's water supply.

Manure is handled with alley scrapers, a manure transfer system and earthen bank storage. A continuous feed, flow through methane digester is used. The farm generates its own electricity and excess is sold to a power supplier. Manure solids are sold and effluent is applied to the land.

A tour will be held of the New Holland Inc plant where the company assembles balers and blowers.

Way Lane Farm will welcome convention goers. This Amish farm of 100 acres features a registered herd of 50 Holstein cows averaging 18,000 pounds of milk.

The final stop will be Zimhaven Farm, owned and operated by Loren and Helen Zimmerman. This registered herd of Holsteins averages 19,000 pounds of milk on 75 cows. These cows are divided into two production groups. Both groups receive a TMR containing 60 percent haylage, 40 percent corn silage plus high moisture corn. The high group also receives a topdress mix containing roasted soybeans, whole cottonseed, shelled corn and a protein supplement.

The herd is housed in a tie-stall barn with a duct ventilation system.

For more information contact the National DHIA at 3021 East Dublin Granville Road, Columbus, OH 43229.

NATIONAL DAIRY COW SALE INDEX

© 1986 Lancaster Farming Newspaper

This sale index can help dairymen place a value on the dairy cows in their own herds. Breed organization sales and private dispersal sales reported in Lancaster Farming are included in the dollar averages.

	Ayrshire	Brown Swiss	Guernsey	Jersey
Year to date:				
Nation	889	1101	1141	960
Pennsylvania	832	950	569	1019
Four previous weeks:				
Nation	988	1436	—	1481
Four previous weeks +/- year to date:	99 higher	335 higher	—	521 higher
	Holstein	Red and White	Milking Shorthorn	
Year to date:				
Nation	2097	1825	850	
Pennsylvania	2006	2837	922	
Four previous weeks:				
Nation	2037	---	---	
Four previous weeks +/- year to date:	60 lower	---	---	

Animals Can't Drink Ice

As the cold days of winter set in upon us, it is important to remember that animals need water, even on cold days, and they can not drink ice. Be sure their water supply is not frozen.

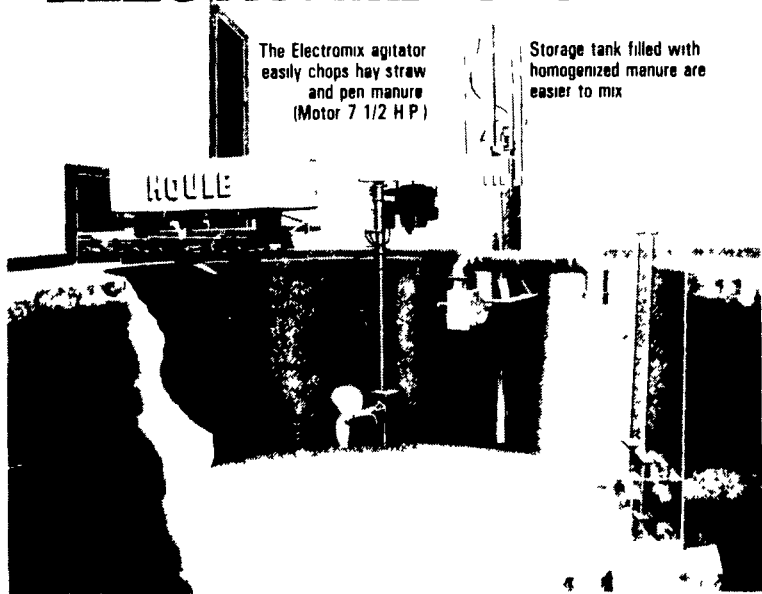
If necessary, rely upon the use of heated water bowls, or the newer insulated frost-free watering devices. Be sure water pipes are not exposed; bury them below the frost level.

HOULE

MANURE EQUIPMENT

A System For Every Need

ELECTROMIX SYSTEM



The Electromix agitator easily chops hay straw and pen manure (Motor 7 1/2 H.P.)

Storage tank filled with homogenized manure are easier to mix

Do Not Cut On Cows Comfort! The Electromix System Handles More Bedding. A Big Agitator Thoroughly Homogenizes Manure With Long Bedding And A Positive Displacement Pump Transfers Manure Great Distances Without Regard To Elevation.

CALL TODAY FOR MORE INFORMATION

US AGRI-SYSTEMS

SPECIALIZED FARM EQUIPMENT

OXFORD, PA 19363

(800) 222-2948

(301) 398-2948

AT LAST!!
A Truly Dependable
WORK WATCH!
Rugged metal case, tough lucite crystal, full numeral dial with sweep second hand and calendar

WATER RESISTANT!
SHOCK RESISTANT!
And, best of all
IT'S LORUS QUARTZ!



Send Name, Address And Check To Address Below

Add 75¢ postage and handling PA residents add 6% sales tax

HEISEY JEWELERS
5 N Meir St
Manheim Pa 17545

Real Rubber



Toplace - 3 eyelet
Ideal For Barn Use
Insulated \$39.95
Not Insulated \$26.95



AMERICAN MADE
WHY PAY RETAIL

Waterproof



Zipper Front - Extra Insulation - Suitable For The Coldest Weather \$46.95

These Boots Run Large To Fit Over Heavy Socks
Order Same As Shoe Size - Available Size 6-13

Name _____
Address _____
City _____ State _____ Zip _____

	Size	Price Each
Toplace Insulated		\$39.95
Zipper Insulated		\$46.95
Toplace Not Insulated		\$26.95
Total		
Send To		NY 6% Sales Tax
Amount Enclosed		

W-R Supply Co.
RD 4 Box 155 Norwich NY 13815
607-336-6987
We Ship In 24 Hours