

Crawford County Holstein Banquet Held

BY NANCY KUNICK
Crawford Co. Correspondent
COCHRANTON — The Crawford County Holstein breeders recently held their annual banquet here at Dante's Restaurant.

Fame came to two of Crawford County's Holstein Club members this year at the state Holstein meeting in Pittsburgh. Marion Alsdorf and Jack Rynd were recognized at the county banquet

for their induction into the Pennsylvania Holstein Association's Hall of Fame.

Alsdorf has farmed near Spartansburg since high school graduation in 1935. He is in part-

nership presently with his two sons, Joel and Jerry, and son-in-law Mark Bachman. He has bred over 30 Excellent cows. At their farm, A-Jay Farms, they milk 120 Holsteins.

Rynd is located in Cochranon with three sons and has also developed 30 Excellent Holsteins over a 30 year period. Presently, Rynd-Home Farm milks 130 registered Holsteins.

President Jeff Raney read a report from treasurer Thomas Wilson. In his report Wilson noted that the Winter Holiday Sale sponsored by the club on Nov. 15 was a success and it "net the club \$2,200 and will put the club in good financial position in 1987."

Pennsylvania Holstein Association President Arthur Baxter of Mercer County updated members on the activities at the state level.

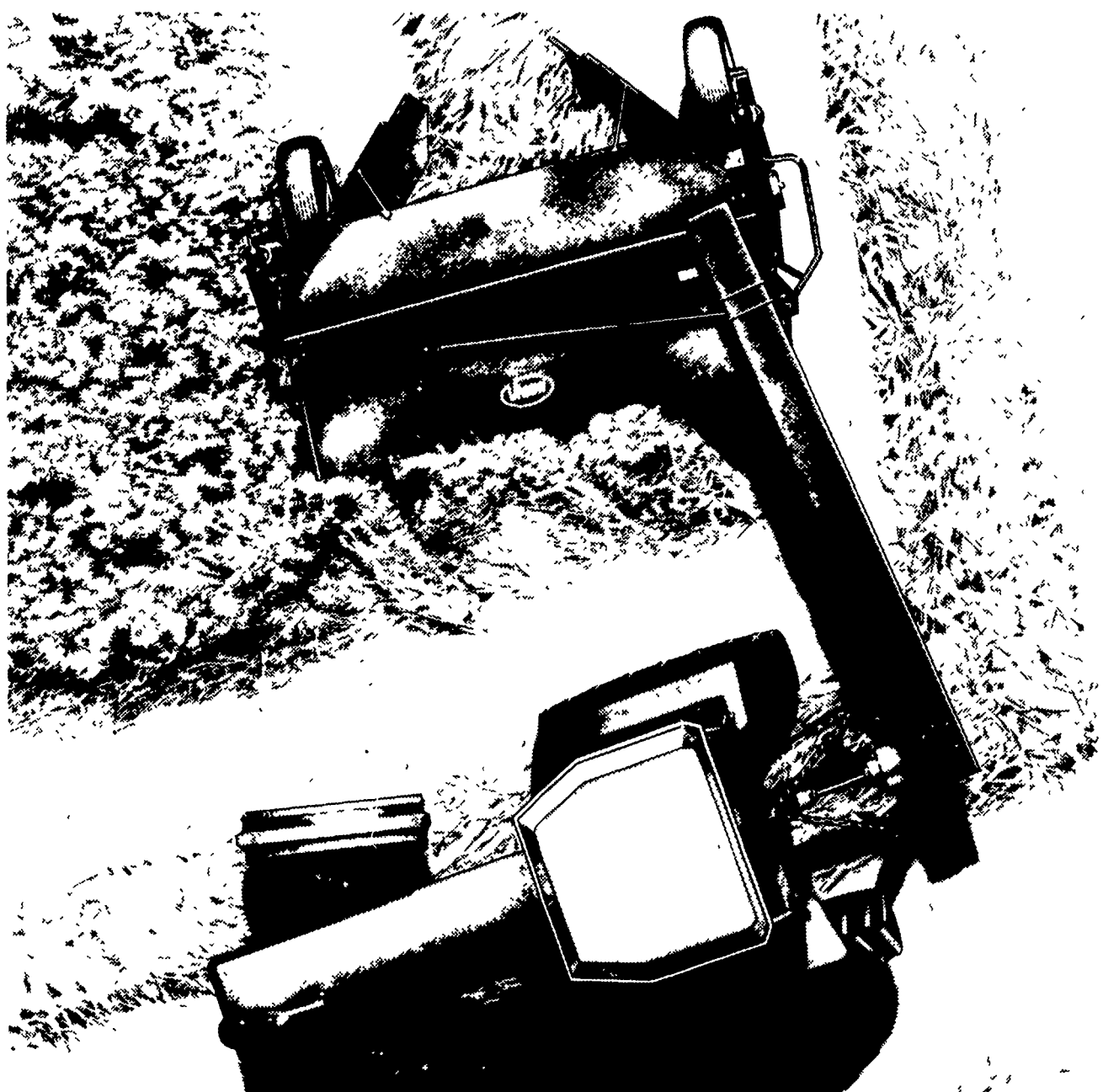
Jeff Harding from the state office reported on the upcoming state convention in February. He noted that selections will begin soon for the convention sale. The Brazil project is going to get off the ground with the next week or so, he added.

Marsha Anthony received the distinguished junior member award for 15 years and over category. Rodney Donovan won the award for the 15 years and under category.

Junior members receiving owner-breeder awards were: James Custead, junior calf; Julie Custead, senior calf; David Black, summer yearling; Jamie Holler, senior yearling; Leslie Pegan, senior yearling and dry cow; Don Closky, junior 2 year old; Kevin Field, senior 2 year old; and Lee Livingston, 5 year old.

Mark and Melanie Bachman, coaches for the county dairy judging team, recognized the team members: Jamie Holler, Jenny Dickey, Jim Oakes and Marsha Anthony. Marsha Anthony was announced as the high individual on the team. She placed in the top 25 at State Days.

Incumbent directors re-elected include: Dan Dickey, Don Closky and Richard Pegan.



WHEN THE MOWING GETS TOUGH, THE TOUGH GET MOWING.

From that first cutting day onward, even through wet, tangled hay, the Vicon mower/conditioner shows what it's made of. It gets the hay down and conditioned 30% faster than competitive models. The crop goes stalk-first through the rollers, for less leaf loss and a higher protein content. You get more hay and better nutritional quality. The world's fastest mower/conditioner also puts hay in windrows 30% faster than conventional models. The extra-tough drive unit brings you through the heaviest crop without plugging. And because it's powder-painted, the Vicon mower/conditioner can be counted on to keep its long-lasting beauty. See your Vicon dealer for a demonstration. He has the Vicon mower/conditioner to fit your farm and budget.

Vicon Your partner for the future.

Penna. Dealers

BURCHFIELDS, INC.
112 S. Railroad St.
Martinsburg, Pa.
814-793-2194

SCOTTIE SWINGLE

Rd 5
Lake Ariel, Pa.
717-698-6825

WENNER FORD

TRACTOR
Route 202
Concordville, Pa.
215-399-9615

New Jersey Dealers

BEEMERVILLE EQUIP.
Rd 3, Box 610
Sussex, NJ
201-875-5672

ERB & HENRY EQUIP. INC.

New Berlinville, Pa.
215-367-2169

STOUFFER BROS.

1066 Lincoln Way West
Chambersburg, Pa.
717-263-8424

SUMMIT SYSTEMS, INC.

Rt. 1
Breezewood, Pa.
814-735-3292
1-800-242-3240

NORMAN BRIGHT, INC.

Evergreen Rd.
New Egypt, NJ
609-758-2211

HUTTON FARM EQUIPMENT

RD 2
Mahaffey, Pa.
814-277-6647

MELVIN J. SHEFFER, INC.

121 Railroad St.
Hanover, Pa.
717-637-3808

TRIPLE H EQUIPMENT

RD 1 Box 141
Peach Bottom, Pa.
717-548-3775

SCHAPER BROS.

RD 8, Box 270
Bridgeton, NJ
609-455-1640

PETERMAN FARM

EQUIP., INC.
225 York Road
Carlisle, Pa.
717-249-2150

WATSON'S INC.

Sharon-Mercer Rd.
Sharon, Pa.
412-346-6514

WM. HOBENSACK'S

SONS
1060 Greeley Ave.
Ivlyland, Pa.
215-675-1610

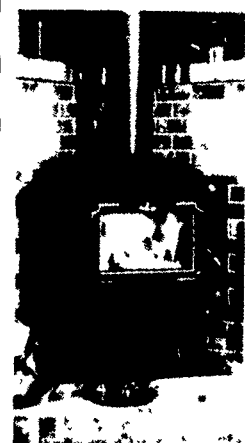
ELLIOTT EQUIP. & HARDWARE

Rt. 328 & Elliott Rd.
Easton, MD
301-822-8866

Maryland Dealers

SEASON'S TREATINGS

A FRIEND CALLED ...



OSBURN

Good name to remember when choosing a wood stove. There's more than the name that sets the Osburn Victorianaire MK II apart from competitors. High quality steel construction does too. So does double walled convection heating and the additional radiant heating from top and front surfaces. The Victorianaire MK II warms up to 2,500 square feet. Advanced design means lower clearances. FEATURES • Airtight door • Self-cleaning Neoceram glass • Fire-brick lining • Equipped with Osburn's "Double Burn" system



Meet Osburn's nice warm friends at:

BOWMAN'S STOVE SHOP

RD 3 Ephrata, PA 17522
One Mile East of Ephrata On Rt. 322
Just Off Rt. 222

Tues. & Wed. 10-6; Thurs. & Fri. 10-8;
Sat. 10-4; Closed Mondays
(717) 733-4973

Season's Greetings From Your Vicon Dealers!