

**Peoria Cattle**

Thursday, Dec. 18, 1986  
Report Supplied by USDA

Compared with last weeks close slaughter steers and heifers closed 1.00 to 2.00 lower, except holsteins steers 3.00 lower. Cows closed fully steady. Bulls generally steady. Supply mainly good to average choice slaughter steers and heifers with 17% cows. Estimated receipts this week about 2400 as compared with actual receipts of 2258 a week ago and 2253 a year ago.

**SLAUGHTER STEERS:** Choice 2-4, mostly 3 1050-1300 lbs. 58.50-60.00, part load 60.50; 975-1050 lbs. 57.50-59.00. Mixed good and choice 2-3 1000-1200 lbs. 55.50-58.00. Good 2-3 900-1100 lbs. 52.00-56.00 mixed good and choice 2-3 holsteins 1300-1600 lbs. 48.00-50.00.

**SLAUGHTER HEIFERS:** Choice 2-4, mostly 3 950-1150 lbs. 56.50-58.00, load 58.25-58.50, load 1260 lbs. exotic crossbred 59.00; 875-950 lbs. 56.00-57.50. Mixed good and choice 2-3 900-1100 lbs. 54.50-56.00 good 2-3 800-1000 lbs. 51.50-55.00.

**COWS:** Breaking utility and commercial 2-3 32.00-35.00. Cutter and boning utility 1-2 30.00-34.00, few high dressing 34.00-35.50. Canner and low cutter 28.00-32.00, few thin 25.00-30.00.

**BULLS:** YG 1-2 1500-2270 lbs. 40.00-43.00.

**Carroll Co. Hay**

Westminster, MD  
Tuesday, Dec. 16

Report supplied by Auction  
23 loads.

Alfalfa, very good, 165.00-190.00, good 119.00-130.00, fair 101.00, 1.70 bale.

Alfalfa with Orchard Grass 186.00; Timothy and Alfalfa, 115.00; Timothy, 135.00-140.00; 2nd cutting Timothy, 130.00; Timothy and Clover, 112.00; Mixed Grass, 110.00.

Mixed Hay, 111.00; Meadow Grass, 81.00; Wheat Straw, 1.05-1.10 bale, 86.00-107.00; Rye Straw, 99.00.

**Carlisle Livestock**

Graded Feeder Pig Sale  
Carlisle, Pa.

Friday, December 12

Results: TREND Compared to November's State Graded Sale pigs graded 1&2's were fully steady while pigs graded 2&3's were 5.00 to 10.00 higher. All pigs weighed on arrival and sold by the hundred weight.

Total Headage 1,055 pigs.

US No. 1 & 2's 555 hd. 13 hd. 26-29 lbs. 135.00-137.50; 81 hd. 40-49 lbs. 106.00-117.00; 199 hd. 50-59 lbs. 104.00-128.00; 146 hd. 61-69 lbs. 89.00-112.00; 111 hd. 73-92 lbs. 82.00-105.00; 5 hd. 110 lbs. 72.00.

US No. 2's 354 hd. 2 hd. 17 lbs.

137.50; 61 hd. 27-39 lbs. 110.00-135.00; 152 hd. 41-49 lbs. 102.00-127.50; 82 hd. 54-59 lbs. 86.00-104.00; 44 hd. 60-69 lbs. 84.00-97.00; 13 hd. 79-86 lbs. 83.00.

US No. 2 & 3's 33 hd. 26-37 lbs. 102.00-126.00; 40 hd. 46-49 lbs. 100.00-101.00; 38 hd. 58-75 lbs. 78.00-93.00.

Utilities: 23 hd. 27-79 lbs. 50.00-80.00.

As Is: 12 hd. 35-58 lbs. 59.00-65.00.

Next State Graded Feeder Pig Sale will be on Friday, January 9th at 1:30 PM (Grading 7:30 until 11:30 AM).

**Weekly Summary**

Harrisburg, PA  
Friday, Dec. 19

Report supplied by PDA  
14 Livestock Markets

**CATTLE:** 5976. Compared with 6149 head last week and 6465 head a year ago. Steers to 1.00 lower; heifers uneven; cows .25-.50 lower; bulls steady to weak; few High Choice & Prime steers 62.00-68.00; Choice 57.00-63.00; Good 52.00-58.00; Standard 42.00-52.00; Choice heifers 52.00-59.25; Good 48.00-54.50; few Standard 40.50-47.00; Breaking Utility & Commercial cows 35.75-40.00; Cutter & Boning 32.50-38.00; Canner & Cutter 27.50-

34.50; snells 22.00. **Choice** bullocks 50.00-53.00; few Good 44.50-49.25; few Standard 44.00-47.00; YG No. 1, 1100-2200 lb. 42.00-51.00; No. 2, 900-1400 lb. 38.50-45.00.

**FEEDER CATTLE:** Large & Med. No. 1, 325-600 lb. steers 48.50-64.00; Large & med. No. 1, 300-700 lb. heifers 43.00-53.00; few Large & Med. No. 1, 300-700 lb. bulls 44.00-58.00.

**CALVES:** 3497. Compared with 3229 head last week and 3884 head a year ago. Good & Choice mostly steady; Standard and Low Good steady to 2.00 higher; few High Choice & Prime 92.00-110.00; Choice 75.00-90.00; Good 58.00-78.00; 90-110 lb. 43.00-55.00; 70-90 lb. 35.00-48.00; hol. bulls 90-130 lb. 75.00-115.00; heifers 90-135 lb. 50.00-67.00.

**HOGS:** 5206. Compared with 5623 head last week and 5577 and head a year ago. Weak to 2.50 lower; most decline later part of week; No. 1-2, 210-250 lb. 51.00-56.50; No. 1-3, 200-260 lb. 50.00-53.00; No. 2-3, 210-265 lb. 48.00-51.00; few No. 2-4, 230-280 lb. 45.00-50.00; few No. 1-3, 160-190 lb. 40.00-51.00; sows steady to 2.00 lower; No. 1-3, 300-700 lb. sows 38.00-46.50; few No. 2-3, 400-700 lb. 35.00-42.00; boars 30.00-38.00.

**FEEDER PIGS:** 899. Compared with 1505 head last week and 879 head a year ago. Mostly steady; 20-35 lb. 20.00-40.00; 35-50 lb. 30.00-57.00.

**2 GRADED FEEDER PIG SALES:** 2463. Compared with 2390 head last week and 4214 head a year ago. Strong to 10.00 higher; No. 1-2, 15-30 lb. 135.00-184.00; 30-40 lb. 115.00-145.00; 40-50 lb. 102.00-130.00; 50-60 lb. 90.00-128.00; 60-70 lb. 84.00-110.00; 79-90 lb. 82.00-105.00; No. 2-3, 25-40 lb. 102.00-132.00; 40-50 lb. 95.00-102.00; 40-50 lb. 95.00-102.00.

**SHEEP:** 1966. Compared with 1093 head last week and 1741 head a year ago. Steady; High Choice & Prime 80-120 lb. 62.00-70.00; Choice woolled lambs 70-110 lb. 57.00-66.00; few Good & Choice 55-75 lb. feeder lambs 63.00-84.50.

**NEW CROP LAMBS:** Choice 20-45 lb. 130.00-190.00; 40-60 lb. 105.00-150.00; 60-80 lb. 80.00-120.00; ewes 11.00-35.00.



**ZIMMERMAN**

MANUFACTURING CORP.

CALL FOR PRICES  
AND YOUR  
LOCAL DEALER

HOLLANDER RD, RD3  
NEW HOLLAND, PA  
17557  
717-354-9611

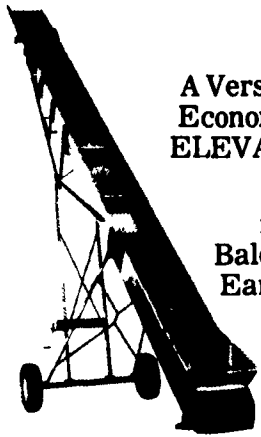
**AIR-O-MATIC  
VENTILATION  
SYSTEMS**



Wall Fan With Hood And  
Painted Galvanized Cabinets

- Rust Resistant For Long Life
- Sizes 20" Thru 48"

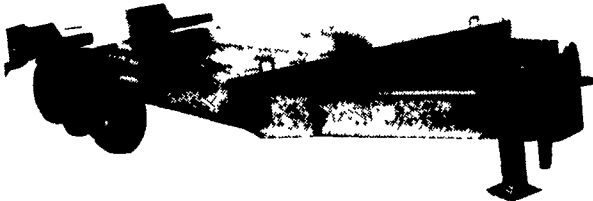
Direct Drive Variable Speed  
And Belt Drive (w/Ball Bearing  
High Efficiency Motor)  
Models Available



A Versatile,  
Economical  
ELEVATOR

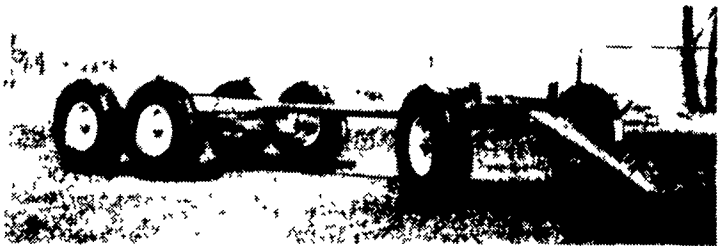
for  
Bales And  
Ear Corn

**UTILITY TRAILERS**



Gross Cap.  
3,000 to  
24,000 lbs.

Variety  
of Sizes  
Made to Order



Zimmerman Rugged  
Heavy Duty Wagon Gear

Available in 6, 8 & 10 ton sizes.  
Also 12 ton tandem axle unit.  
Options include adjustable quick hitch tongue, various size wheels and tires.

**CHRISTMAS JOY**



May the meaning and the message of the first Noel rekindle your faith in His love. Merry tidings.

**SPECIALIZING IN FLUID FERTILIZER**

(Granular Fertilizer Also Available)

OVER 35 YEARS EXPERIENCE  
USING MODERN APPLICATING EQUIPMENT FOR EVERY SIZE JOB

**AVAILABLE FERTILIZERS AND SERVICES**

- \* Liquid Pop Up Corn Starter 9-18-9 3s
- \* Granular Corn Starter In Bags
- \* Suspension Fertilizer-weed and feed with flotation equipment.
- \* Side dressing corn with Liquid N Solution

CALL 717-397-0035



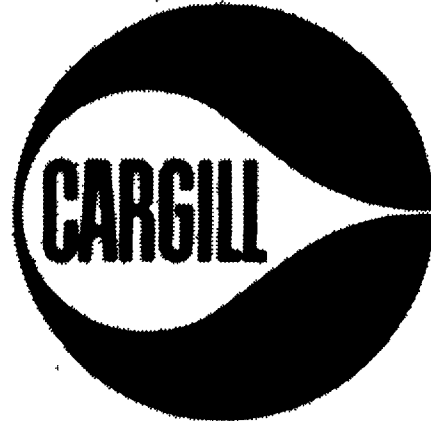
2020 Horse Shoe Rd., Lancaster, PA  
Ph. 717-397-0035

LIQUID  
FERTILIZER

**CASH**

FOR

**PIK CERTIFICATES**



Marietta, PA (717) 426-1961

Buying and Selling Certificates and Cash Grains

Serving American Agriculture For Over 100 Years.