



**Bradford
County
DHIA
Monthly
Report**

October, 1986

This reports all DHIA cows that have produced 850 pounds of fat or more in 305 days

Owner Name or No.	Brd.	Age	Days In Milk	Lbs. Milk	Lbs. Fat
Y Run Dairy Farms					
Anne	3	7	305	25,489	918
Jessie	3	5	305	23,848	929
Patience	3	4	305	22,204	867
Russell Jones					
Liane	3	4	305	19,354	870
Bride Brothers					
154	3	8	305	24,118	909
Richard Sturdevant					
Kay	3	8	305	23,753	953
Glen & Arlen Landis					
Laddie	3	8	305	23,492	854
Ben & Dean Jackson					
Talu	3	7	305	28,719	949
#Huffy	3	4	305	31,837	1221

David Berry	3	5	296	23,715	928
D 60	3	5	305	21,867	939
R 64					
Ford Ridge Farm					
Sybil	3	3	305	20,183	859
Milford Kinsman & Son					
Felicia	3	5	305	26,021	886
Gerdine	3	4	290	21,212	852
Hamper	3	3	305	22,791	872
Gerald Stethers					
55	3	3	305	22,612	961
Robert Storch					
4342	3	4	305	17,940	885
East Knoll Farm					
Velma	3	3	305	23,195	866
Robert Taylor					
Cindy	3	6	305	23,018	866
HW Russell & Sons					
141	3	7	296	23,754	907
30G	3	4	305	19,654	876
Richard Wheeler					
Prize	3	6	305	25,749	954
Tom & Diane Elliott					
Sally	3	7	280	23,717	876
Peaches	3	5	305	27,180	926
Alfred Sparling					
Dora	3	8	305	25,346	921
Taffy	3	6	305	20,346	912
Katie	3	6	305	23,587	867
Edie	3	5	305	23,409	893
Liz	3	5	305	24,297	998
Holly	3	4	305	24,828	905
Lolly	3	0	305	18,990	855
Carly	3	2	305	24,309	876
Braund Valley Farms					
Blacky	3	10	305	23,165	899
Eleanor	3	4	305	22,601	897
Allen Andrews					
Velvet	3	6	305	25,640	852
Cherish	3	3	305	23,592	1032

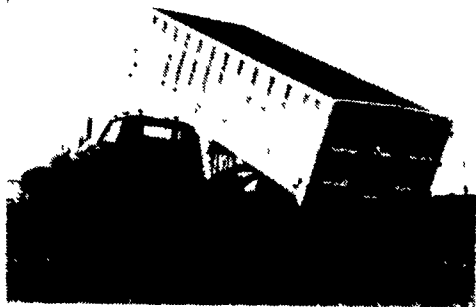
Walter Wheaton	3	5	305	22,099	914
44					
ML Case					
Jetlag	3	4	305	27,282	865
Snowcrest Farm					
Anna	3	5	305	25,946	856
Jose	3	6	305	22,370	928
W&R Vanblarcom					
84	3	6	305	26,174	1113
Calkins Farm					
Pricila	3	5	305	21,760	970
Abraham Derstine					
Abbie 42	3	6	305	27,666	898
Marshall Watkins					
Jolene	3	4	277	21,851	850
Julie	3	4	295	9,763	893
Scott & Lynn Cook					
Velma	3	4	305	24,039	859
Sugar Ridge Holsten					
T Bone	3	8	305	25,422	869
Lawrence Swartley					
54	3	4	305	23,145	923
Matt Will B&W					
Sonya	3	4	305	25,279	854
Sheena	3	3	305	21,949	862
Tom & Elaine Comstock					
Mitz	3	4	305	28,315	1047
Jan-George Page Jr					
Annamae	3	5	299	23,683	875
Bruce Wenger					
Dors 217	3	5	305	28,443	1001
Tanya 2	3	5	305	26,751	1017
Marla	3	4	305	22,362	873
Mami 29s	3	5	305	29,053	1030
Hiedi 50	3	4	305	32,257	1175
Champdale Farm					
Y 99	3	0	303	23,406	913
Perry Cooley					
39	3	3	305	23,640	868

(Turn to Page D25)

HEWEY WELDING

Box 2312, Rd 4, Lebanon, PA 17042
717-867-5222

ALUMINUM GRAIN BODIES & ALUMINUM REPAIRS



These ultra-light bodies are designed for strength through engineering, not strength with bulk. For example a 16' grain body with tailgate and 48" sides weighs only 1490 lbs. complete. We'll build you any length or any side height up to 60".

Also available

- ★ Double swinging hay hauling tailgate
- ★ Barn door type tailgate
- ★ Slide out cattle chutes
- ★ Diamond Flooring
- ★ Pull out panel tailgates
- ★ Any size grain chute

Eliminate Fencing Problems with ARC 12 Solar Fencing High Tensile Wire

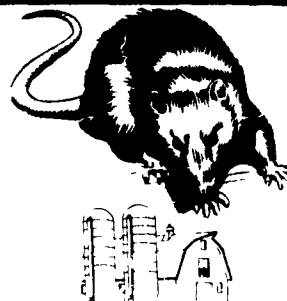


- Eliminates fence sagging
- No staples or wire clips
- Adjustable enclosed spring assembly for each wire
- Optional site rails™
- Optional Arc 110 Volt multi wire unit
- Installed by trained dealers
- Fully guaranteed by warranty

SOLAR FENCING CO.
1-800-247-8150

or
KEYSTONE SOLAR FENCE
RD 2, Box 148 Watons town, PA 17777
717-649-5321

ATTENTION FARMERS... FREE ESTIMATES ON RODENT CONTROL



RODENTS carry diseases which can endanger the health of your poultry flocks. Your business is raising them. Ours is protecting them

We Specialize In Sanitizing And Disinfecting Poultry Houses

Fhrlich

Since 1928 Pest control is too important to trust to anyone else

Lancaster, PA 397-3721
Lewistown, PA 248-0983
State College, PA 237-7607



We'd like to Thank all of our customers for your patronage during the past year and wish all of you

A VERY MERRY CHRISTMAS and A PROSPEROUS NEW YEAR

FISHER'S PAINTING

4056 A Newport Road
Kinzers, PA 17535
(Across From Pequea Valley School)
717-768-3239

**HOLIDAY
HIGHLIGHTS**



May the magic of Christmas fill your souls with wonderful things! Our thanks to one and all!

RYDER SUPPLY CO.

539 Falling Spring Road
P.O. Box 219, Chambersburg, PA 17201-0219
Phone 717-263-9111