

# Ag Arena Receives Architecture Award

STATE COLLEGE, Pa. — The ag arena at Penn State University has been hailed as one of the most modern and flexible agricultural facilities in the northeast according to Carol Chase, reporting in the Daily Collegian newspaper on Monday. The ag arena was among architectural designs published in the Fourth Annual Architectural Port Folio awards issue of American School and University. This awards program honors outstanding facilities and their design teams.

According to American School and University, the ag arena is different from other buildings because it is reminiscent of traditional farm architecture but uses modern materials in its structure, such as concrete blocks and steel trusses.

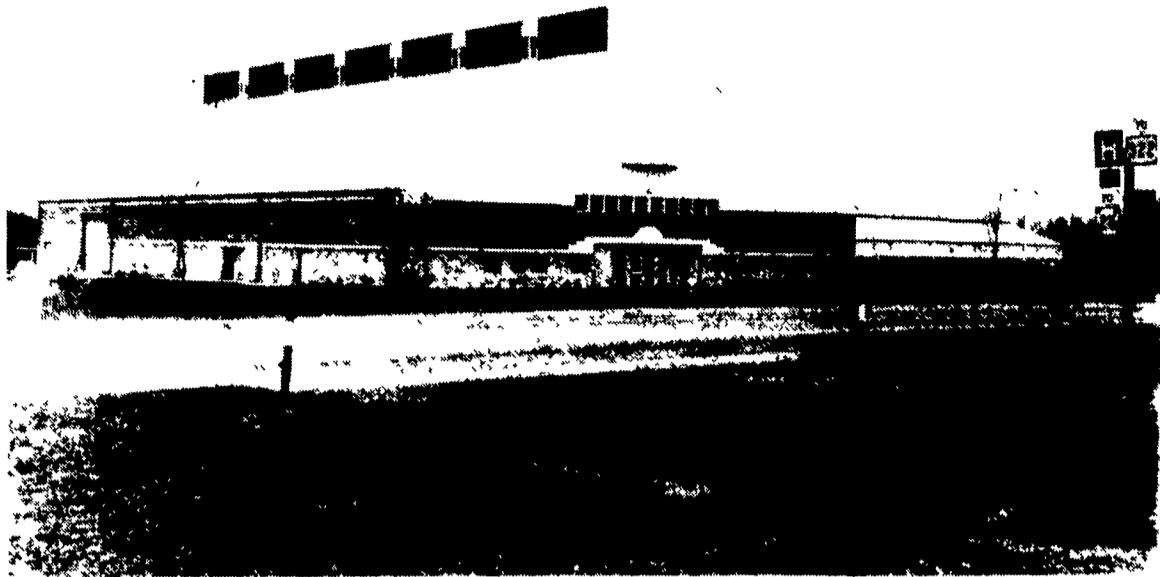
John Miller, university assistant to the vice president for business and operations, said construction on the building began in June of 1963 and ended around July 1984. "Building cost was \$1.2 million," he said.

Opened as a show place for the College of Agriculture, the big arena contains a riding ring for

horse shows for agricultural events and hosts meetings and workshops.

"The award is an honor, which reflects on the university and the university board of trustees," Miller said. "Because it was the board that approved the building plans." The ag arena also received the top award for the year for its excellent design from the Pennsylvania chapter of the American Institute of Architects and appeared in the May issue of Architecture Magazine.

Both architects involved in educational work as well as the readers of American School and University will be influenced by the designs of the winning entries.



The ag arena at Penn State University has received one of thirteen special citations for outstanding architecture among educational buildings.

**READ LANCASTER FARMING FOR COMPLETE AND UP-TO-DATE MARKET REPORTS**

## MILK AMERICA'S HEALTH KICK™

### HOW TO HANDLE PRESSURE

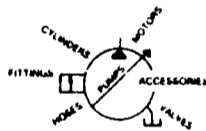
Use only Gates Hydraulic Assemblies

Authorized Distributor



Wholesale • Retail  
Sales • Service • Installations

The Leader in Hydraulics



## BEILER HYDRAULICS



Box 255A, R.D. #1, N. Shirk Rd.

New Holland, PA 17557

(717) 354-6066

## SCHLESSMAN'S

### HYBRID CORN

#### PEMIUM SINGLE CROSSES

- SX-405A    ■ SX-711 (New)    ■ SX-805 (New)
- SX-642 (New)    ■ SX-725    ■ SX-810

#### PENN STATE TRIALS, ZONE 2

- SX-625 - Highest grain yield and 2nd highest tonnage or best TDN value/acre.

**BALER TWINE**  
For The Best Fall  
Prices Call Now...  
New Prices In For '87

#### ALFALFAS

Saranac AR and others    Boyds 84 VWAP Brand  
Boyds 78AT Brand  
Boyds Wet Foot Brand

#### CHEMICALS

### WHOLESALE & RETAIL

## BOYDELL FARMS

302 Iona Rd., Lebanon, PA 17042  
Phone: 717-272-8943

### POLYVINYL P.V.C. PRODUCTS

100's Of Uses

#### P.V.C. RAW MATERIAL

- 2x4    • 2x6    • 2x8 T&G    • 4x4
- 5x5    • 7/8"x1 1/2"    • 7/8"x3"    • U-Channel
- Pipe • Accessories, Etc.

#### P.V.C. WHITE RAIL FENCE



3-Rail Fence w/Gates "Never Need Paint"  
P S Polyvinyl will not rot, splinter, chip, etc

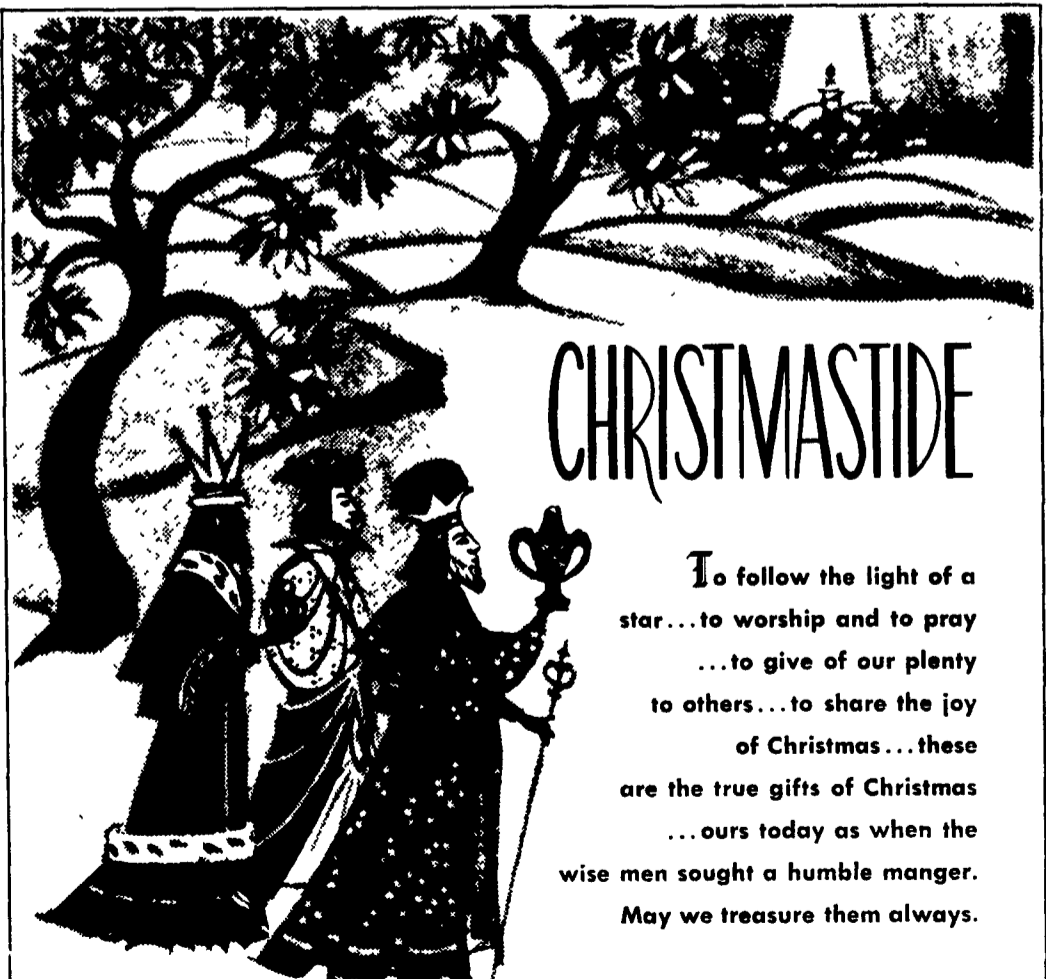
Write To

## QUALITY FENCING & SUPPLY

WHOLESALE AND RETAIL

R.D. 1, Box 428

New Holland, PA 17557



## CHRISTMASTIDE

To follow the light of a star... to worship and to pray  
...to give of our plenty to others... to share the joy of Christmas... these are the true gifts of Christmas  
...ours today as when the wise men sought a humble manger.  
May we treasure them always.

## TRI-COUNTY SWINE SYSTEMS

608 E. EVERGREEN RD., LEBANON, PA 17042  
(717) 274-3488