

Livestock market and auction news

Leesport Livestock Auction

Leesport, Pa.

Wednesday, December 17, 1986
Report Supplied by PDA

CATTLE 305...PDA... SUPPLY INCLUDED 45 FEEDER CATTLE
Compared with last Wednesday's market: Slaughter steers weak to \$2 lower; Cows steady to .50 lower. Few Choice 1000-1400 lbs. steers 57.00-61.25, one Prime 1400 lbs. 63.85, Good 51.25-56.50, Good & Choice holsteins 1250-1400 lbs. 47.50-50.75, few 52.85, Standard 42.00-46.50. Choice 900-1100 lbs. slaughter heifers 51.35-57.50, one 61.25, few Good 50.00-53.00, few Choice holsteins 1250-1550 lbs. 50-53.85, few Standard 38.50-41.00. Breaking Utility and Commercial slaughter cows 35.75-38.50, few 40.25, Cutter and Boning Utility 33.85-36.85, Canner and Low Cutter 30.60-34.00, Shells down to 27.10. Few Choice slaughter bullocks 50.75-52.85, few Good 45.00-49.25, few Standard 44.00-47.00. Yield Grade No. 1, 1200-2000 lbs. slaughter bulls 44.50-47.75, few 50.00, few No. 2, 1100-1200 lbs. 40.50-44.00. Feeder Cattle: Medium Frame No. 1, 375-600 lbs. steers 56.50-64, few Large No. 1, 1100-1150 lbs. 44.00-45. Few Medium Frame No. 1, 500-600 lbs. heifers 43.00-45. Few Large & Medium Frame No. 1, 400-850 lbs. bulls 43.75-50.50.

CALVES 189...Vealers unevenly steady. Few Good vealers 67.00-90.00, Standard and Good 70-110 lbs. 47.00-50, 70-85 lbs. 40.00-47, few Utility 90-110 lbs. 40.00-47, few 55-70 lbs. 30.00-40.00. Farm Calves: Holstein Bulls 90-130 lbs. 50.00-99.50, mostly 85.00-98.00. Few Beef cross bulls & heifers 85-95 lbs. 75.00-95.00. Few Good & Choice 250-270 lbs. slaughter calves 55.00-64.00.

HOGS 599...Barrows and gilts

\$1.25 to \$2.25 lower. US No. 1-2 200-255 lbs. 52.10-53.00, few lots 54.50, one lot 56.50, 1-3 200-255 lbs. 50.50-52.10, 2-3 210-260 lbs. 50.00-50.60, 2-4 225-295 lbs. 45.00-49.75. Sows \$3-\$3.50 lower. US No. 1-3 325-725 lbs. sows 38.75-42.50, few Medium 275-450 lbs. 35.00-38.00. Boars 34.50-35.50, light weights 38.00-40.00.

FEEDER PIGS 122...Lot US No.1-3 20 lbs. feeder pigs 32.00 per head; 25-35 lbs. 113.00-134, 50-65 lbs. 89.00-95.00 ---- all per hundredweight.

SHEEP 112...Choice 90-110 lbs. wool slaughter lambs 57.00-61, 55-85 lbs. 62.00-75, few 140 lbs. 50.00-51; Good & Choice 25-45 lbs. new crop lambs 112.50-140, 50-60 lbs. 80.00-107.50. Slaughter sheep 12.00-18.00.

GOATS 23...Medium 27.00-48.00 -- all per head.

Keister's Middleburg Livestock Auction

Middleburg, Pa.

Tuesday, December 16, 1986

Report Supplied by PDA

CATTLE 302... REPORT IS SUPPLIED BY AUCTION. High Choice & Prime slaughter steers 61.00-62.85, Choice 59.00-60.75, Good 54.00-58.85, Standard 50.00-54.00, Utility 45.00-50.00. Choice slaughter heifers 56.00-57.75, Good 52.00-56.00, Standard 45.00-52, Utility 38.00-45.00. Breaking Utility and Commercial slaughter cows 36-40.85, few 41.60, Cutter and Boning Utility 35.00-39.75, Canner and Low Cutter 30.00-35, Shells down to 28.00. Choice slaughter bullocks 51.75-54.25, Good 48.00-51.75. Yield Grade No. 1, 1200-1885 lbs. slaughter bulls 43-48.75, No. 2, 800-1200 lbs. 36.00-43.00. Feeder Cattle: No Weights Few Steers 42.00-55.00. Few Heifers 38.00-49.00. **CALVES 138...Choice vealers**

76.00-97.00, Good 60.00-76.00, Standard and Good 90-110 lbs. 45.00-55.00, 60-90 lbs. 35.00-45.00. Farm Calves: Holstein Bulls 90-125 lbs. 60.00-101.00.

HOGS 342...US No. 1, 215-255 lbs. barrows and gilts 57.00-58.25, 1-2 210-245 lbs. 56.00-57.00, 2-3 200-250 lbs. 55.00-56.00, 2-4 190-270 lbs. 49.25-55.00. US No. 1-3 280-650 lbs. sows 43.00-46.00, few 50.00, 2-3 270-550 lbs. 32.00-42.00. Boars 32.00-37.00.

FEEDER PIGS 355...US No. 1-3 20-35 lbs. feeder pigs 32.00-40.00, 35-50 lbs. 40.00-57.00 -- all per head.

SHEEP 66...High Choice & Prime 30-80 lbs. wool slaughter lambs 100.00-155, Choice 90-110 lbs. 60.00-75.00, Good 60-90 lbs. 50.00-60.00. Slaughter ewes 26.00-28.00.

GOATS 0...No market test.

Lebanon Valley Livestock Auction

Fredericksburg, Pa.

Tuesday, December 16, 1986

Report Supplied by PDA

CATTLE 242...PDA. Supply includes 66% slaughter cows. Compared with last Tuesday's market: Slaughter cows mostly steady to .50 lower. Choice slaughter steers 2-4, 960-1255 lbs. 57.25-60.00, few Good 53.50-58.75, few Good and Choice holsteins 49.75-53.00, two Standard 50.75, few Utility & Standard 40.85-44.25. Choice 3-4 slaughter heifers 53.25-56.25, Good 45.50-53.00, few Standard 40.75-44, Utility & Low Standard 33.00-38.75. Few Breaking Utility and Commercial slaughter cows 36.60-39.25, Cutter & Boning Utility 33.75-37.35, Canner and Low Cutter 30.75-33.75, Shells down to 22.50. Two Good slaughter bullocks 44.50 & 47.85, two Standard 41.50&43.50. Few Yield Grade No. 1, 1210-2160 lbs.

slaughter bulls 45.00-45.75.

CALVES 209...Vealers grading Standard and Good mostly steady to \$1 lower. High Choice, individual 87.00, one Choice 78.00, one Good 70.00, Standard and Good 90-110 lbs. 46.00-49, one 130 lbs. 55.00, 70-85 lbs. 42.00-46.00, Utility 50-85 lbs. 30.00-40.00. Farm Calves: Holstein Bulls 90-125 lbs. 62.00-100.00, few down 47.00; few Holstein Heifers 85-115 lbs. 50.00-54.00.

HOGS 199...Barrows and gilts weak to \$2 lower. US No. 1-2 210-240 lbs. 52.00-52.60, lot 53.25, 1-3 220-275 lbs. 51.60-52.25, lot 52.60, 2-3 200-250 lbs. 51.10-51.75, 1-3 190-200 lbs. 50.35-51.75. US No. 1-3 285-680 lbs. sows 40.50-45.00, fe Medium 215-465 lbs. 33.00-38.00. Boars 38.00-41, few light weights 41.50-42.50.

FEEDER PIGS 27...US No. 1-3 27 lbs. feeder pigs 85.00 -- all per hundredweight.

SHEEP 8...Few Choice 70-135 lbs. wool slaughter lambs 51.00-60.00, few Utility and Good 45-90 lbs. 52.00-59.00.

GOATS 0...No market test.

Mercer Livestock Auction

Mercer, Pa.

Tuesday, December 16, 1986

Report Supplied by PDA

CATTLE 290...PDA. Compared with last Tuesday's market: Choice slaughter steers 58.00-62.00, Good 53.00-57.00, Standard 47.00-52.00. Choice slaughter heifers 55.00-58.00, Good 50.00-54.00, Standard 42.00-47.00, Utility 38.00-41.00. Breaking Utility and Commercial slaughter cows 36.25-39.85, couple 41.85, Cutter and Boning Utility 32.50-37.00, Canner and Low Cutter 27.50-33.00, Shells down to 22.00. Yield Grade No. 1, 1200-1900 lbs. slaughter bulls 40.85-48.60, No. 2, 900-1500 lbs. 37.00-

41.00. Feeder Cattle: Few Medium No. 1, 400-600 lbs. steers 50.00-57.00, lot 780 lbs. 49.00. Medium Frame No. 1, 400-600 lbs. heifers 44.00-50.00.

CALVES 138...One Choice vealer 80.00, few Good 65.00-75.00, Standard and Good 90-120 lbs. 46.00-54.00, 60-85 lbs. 36.00-46.00, few Utility 50-80 lbs. 20.00-31.00. Farm Calves: Holstein Bulls 90-125 lbs. 80.00-129.00.

HOGS 351...Barrows and gilts \$1.50 to mostly \$2 lower. US No. 1-2 230-250 lbs. 51.00-52.00, two lots 52.35&52.85, 1-3 215-255 lbs. 50.00-51.10, 2-3 230-255 lbs. 48.00-49.50, 1-3 155-185 lbs. 40.00-44, 2-4 210-250 lbs. 45.00-47.00. Few US No. 1-3 400-550 lbs. sows 45.00-46.50, one 2-3 280 lbs. 43.00. Few Boars 34.50-38.00.

FEEDER PIGS 0...No market test.

SHEEP 6...One Choice 80 lbs. wool slaughter lamb 75.00, few Good 55 lbs. feeder lambs at 50.00.

GOATS 0...No market test.

Belknap Livestock Auction

Dayton, Pa.

Wednesday, December 17, 1986

Report Supplied by PDA

CATTLE 140...PDA. Compared with last Wednesday's market: Slaughter cows steady. Fe Standard slaughter steers 44.50-49.00. Standard slaughter heifer, individual 43.75, few Utility 37.00-38.25. Breaking Utility and Commercial slaughter cows 36.00-39, Cutter and Boning Utility 32.50-37, Canner and Low Cutter 28-32.50, Shells down to 26.00. Few Utility slaughter bullocks 36-38.75. Individual Yield Grade No. 1, 1650 lbs. slaughter bull 46.00, few No. 2, 1100-1725 lbs. 38.50-42.00. Feeder Cattle: Medium & Large Frame No. 1, 330-420 lbs. steers 49.00-59.00. Medium & Large Frame No. 1, 310-520 lbs. heifers 39.50-49.50, 525-710 lbs. 37.50-43.25, No. 2, 450-810 lbs. 30-38.50. Few Medium Frame No. 1-2, 490-825 lbs. bulls 37-47.50.

CALVES 76...Few Good vealers 55.00-65.00, Standard and Good 90-120 lbs. 45.00-54.00, 60-85 lbs. 30.00-47.50, few Utility 12.00-30.00. Farm Calves: Holstein Bulls 95-125 lbs. 60.00-100.00.

HOGS 203...Barrows and gilts \$2.50 to \$3 lower. US No. 1-2 225-245 lbs. 50.00-50.50, one small lot 51.25, 1-3 215-245 lbs. 49.40-50.30, 2-3 210-265 lbs. 48.50-49.35. US No. 1-3 360-675 lbs. sows 39.50-46.50. Few Boars 30.00-32.50.

FEEDER PIGS 63... US No. 1-3 20-35 lbs. feeder pigs 11.50-23.00, 35-50 lbs. 23.00-39.00 -- per head.

SHEEP 3...No market test.
GOATS 11...11.00-28.00 -- all per head.

NuPulse is more than just a Milking Machine

Watch our January Ad for our first special in 1987

We thank you for your business throughout 1986 and wish all of you a Happy Holiday Season and a prosperous 1987

We are looking forward to seeing you at our Farm Show Booth (N28 & N29)



Nu Pulse, Inc.

908 Stewart Street
Madison, WI 53713 USA
608/274-2722

DIST. SALES MGR.

CURT CASSADY
519 Golden Street
Lititz, PA 17543
717/626-1065



NuPulse, Inc. Welcomes Two New Dealers

Dairyland Sales & Service

RD 3, Box 43

Troy, PA 16947

(3 miles West of Troy on Rt. 6)

717/297-4128

Fancy Furrow Farms Ag Equip. Inc.

RD 1, Uhler Rd.

Easton, PA 18042

For 24 Hour Service Call

215/252-8828

Effective 1/1/87

PENN YORK REFRIGERATION
RD 1, Box 390
Knoxville, PA 16928
814/326-4496

SCHMIDT'S EQUIPMENT
RD 2, Box 122
Hawley, PA 18428
717/253-3048

FISHER & THOMPSON
127 Newport Road
Leola, PA 17540
717/656-3307

ZIMMERMAN'S SALES & SERVICE
2440 St. - Rt. 7
Columbiana, OH 44408
216/482-5190

ASHBY FARM SERVICE
RD 8 Box 1A
Harrisburg, VA 22801
703/434-9943

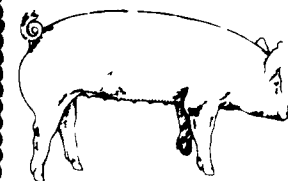
AQUILLA YODER
Box 83
Belleville, PA 17004
717/935-2481

STINER'S REFRIGERATION
25 Crooks Terrace
Canton, PA 17724
717/673-8351

LUCAS BARN EQUIPMENT
RD 2, Box 339D
Bellefonte, PA 16823
814/383-2806

CRIDER DAIRY EQUIPMENT
8933 Rowe Run Road
Shippensburg, PA 17257
717/532-2196

HENRY JAQUITH
RD 1, Box 325
Spring Creek, PA 16436
814/664-2397



EMERY'S BUYING STATION

OPEN TO RECEIVE YOUR MARKET HOGS

**AT THE GREEN DRAGON MARKET
RD 4, EPHRATA, PA 17522
1 MILE NORTH OF EPHRATA
ON NORTH STATE STREET.**

HOLIDAY HOURS

Dec. 22, 23, 29 & 30

7 a.m. to 11:30 a.m.

215-458-5677 Residence
717-733-9648 Office

YOU ARE PAID FOR YOUR HOGS IMMEDIATELY

Ken & Lois Emery, Proprietors