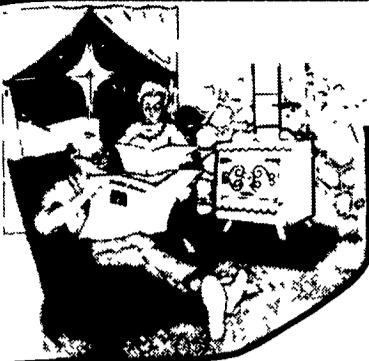


# WINTER SAVINGS WARM-UP



**ALL ERTL FARM TOYS**



**10% OFF**

**REDDY HEATER®**  
High-Output Kerosene Heaters  
5 Models To Choose From

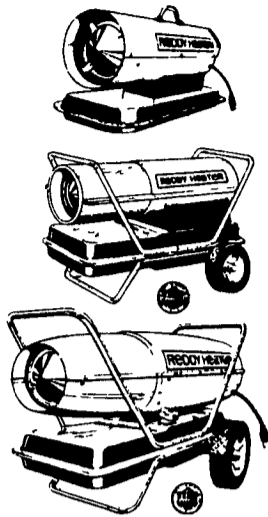
35,000 BTU  
**\$149**

50,000 BTU  
**\$179**

70,000 BTU  
**\$219**

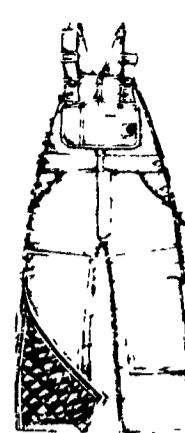
100,000 BTU  
**\$279**

150,000 BTU  
**\$329**



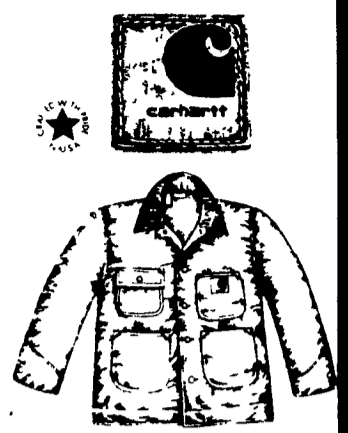
**Brown Duck Insulated Coveralls**

**\$55.99**



**Brown Duck Quilt Lined Bib Overall w/Leg Zipper**

**\$24.99**



**Brown Duck Quilt Lined Coat**

**\$29.99**



**BROODER LAMP**

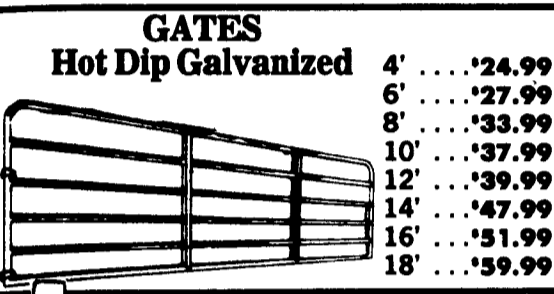
Heavy duty aluminum reflector complete with hanger & double-wire guard. High heat porcelain socket. No. 68234

**\$4.29**

**HEAT LAMP BULBS**

125 W Clear **\$1.29**

250 W Clear **\$1.29**



**GATES Hot Dip Galvanized**

4' .... \$24.99  
6' .... \$27.99  
8' .... \$33.99  
10' ... \$37.99  
12' ... \$39.99  
14' ... \$47.99  
16' ... \$51.99  
18' ... \$59.99



**WD-40**  
Stops Squeaks

9 oz. **\$1.59**    Gallon **\$7.88**



**ANTI-FREEZE**

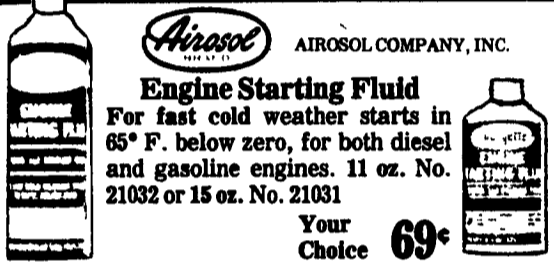
**\$2.99**  
Gal.



**FLANNEL SHIRT**

Men's yarn dyed woven flannel shirts 100% cotton. Standup collar and bottom flap pockets. Assorted colors Sizes S,M,L,XL No. 508001/2

Regular **\$6.99**    Western **\$7.99**



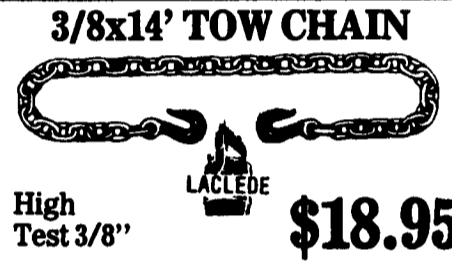
**Aerosol**

AIROSOL COMPANY, INC.

**Engine Starting Fluid**

For fast cold weather starts in 65° F. below zero, for both diesel and gasoline engines. 11 oz. No. 21032 or 15 oz. No. 21031

Your Choice **69¢**



**3/8x14' TOW CHAIN**

High Test 3/8"

**\$18.95**



**12 Pack Yellow Fleece CHORE GLOVES**

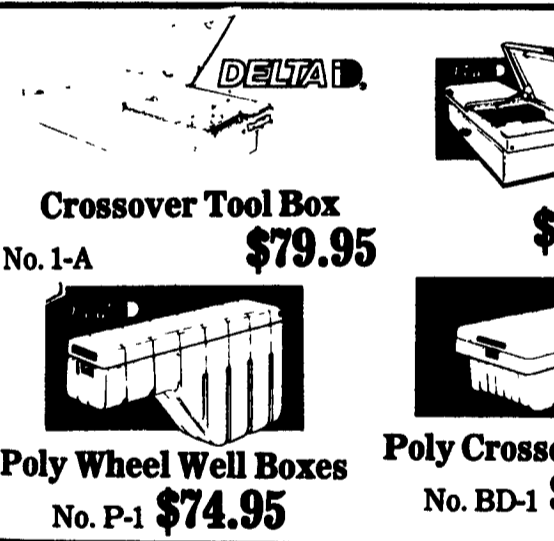
**\$11.99**



**POWER WASHER**

Corrosion-proofed high pressure cleaner with water-cooled motor features 3 cylinder axial piston pump & incorporated injector for cleaning with chemicals. No. 0901K

**\$349.95**



**DELTA**

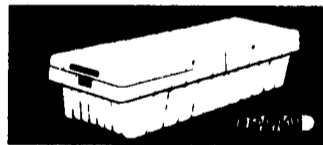
**Crossover Tool Box No. 1-A \$79.95**



**Poly Wheel Well Boxes No. P-1 \$74.95**



**\$89.95**



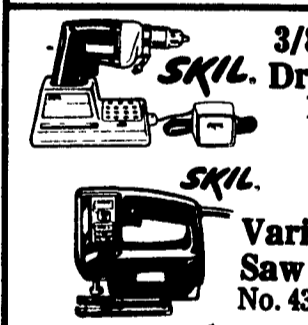
**Poly Crossover Toolbox No. BD-1 \$119.95**



**key**

**Saddle King Boot Jean No. 4874.48**

**\$8.97**



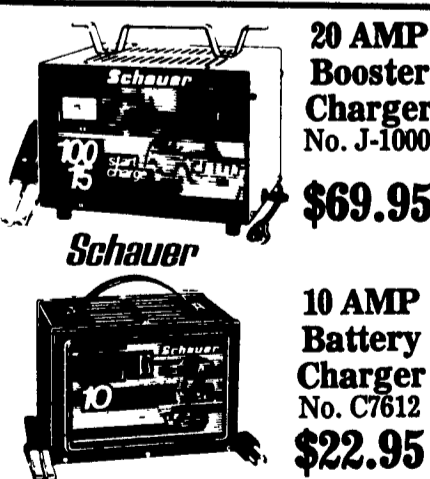
**SKIL. 3/8" Cordless Drill with Bits No. 2125-02 \$35.95**



**SKIL. Variable Speed Jig Saw With Glue Gun No. 4355-02 \$47.95**

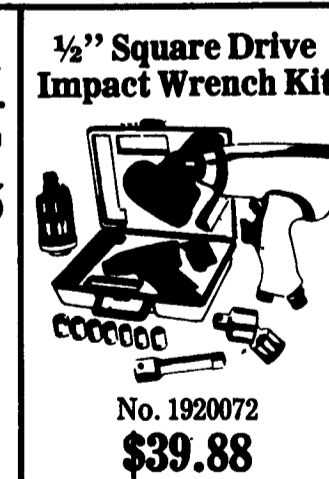


**SKILSAW. 7 1/4" Circular Saw No. 5150 \$38.99**



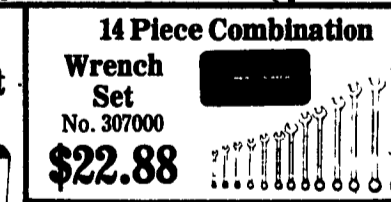
**20 AMP Booster Charger No. J-1000 \$69.95**

**10 AMP Battery Charger No. C7612 \$22.95**



**1/2" Square Drive Impact Wrench Kit**

**No. 1920072 \$39.88**



**14 Piece Combination Wrench Set No. 307000 \$22.88**

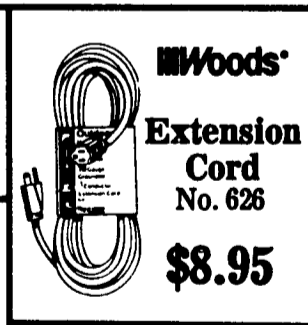


**Tread-Brite Aluminum Running Boards No. 39951 \$49.99**



**Milk House Heater No. 7760B1 \$24.99**

**Sentry Safe-3 No. 1330**  
Cost \$124.95  
Less Customer Rebate \$10.00  
Your Cost After Rebate **\$114.95**



**Woods' Extension Cord No. 626 \$8.95**

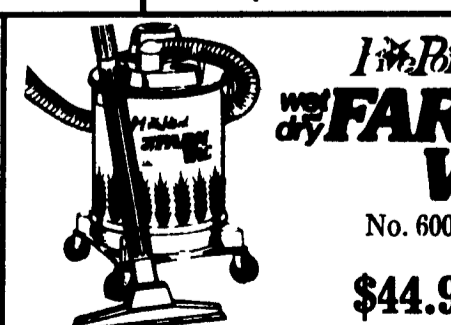


**TOOL CHEST No. 18806 \$99.95**



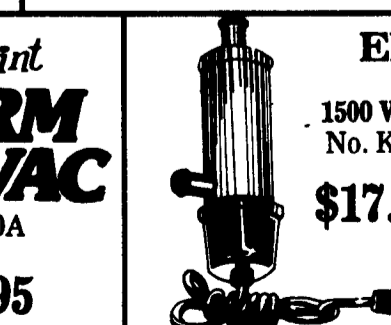
**BENCH VISE**

4" No. 1040055 **\$28.99**    6" No. 1040057 **\$39.50**



**1 Pint FARM VAC**

No. 600A **\$44.95**

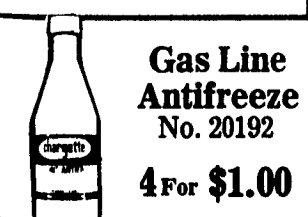


**ENGINE HEATER**

1500 Watt No. K150 **\$17.99**

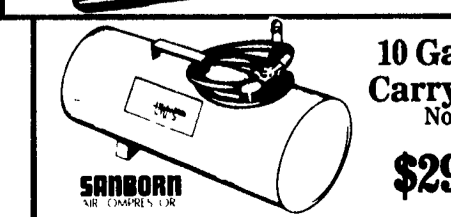
Magnetic No. KM-1 **\$12.95**

**KATS**



**Gas Line Antifreeze No. 20192**

**4 For \$1.00**



**10 Gal. Air Carry Tank No. 10**

**\$29.95**

PRICES EFFECTIVE TIL DEC. 24th

**EMHERR**

**Farm & Home**  
RD #1 Rte 272 So  
Willow Street, Pa 17584  
Ph. 717 464 3321 or 800 732 0053  
Toll Free (Area Codes 717 & 215)

**Your One Stop Hardware - Farm Supply Store**