

MAILBOX MARKET FOR SALE

4 beef heifers, 500-800 lbs., .50 cents per lb. Also 2 steers weighing 500-900 lbs., .55 cents per lb. Bucks Co. 215-257-2377

Yearling Dorset Ram or 2 yr Black Ram, \$75. or Trade; Suffolk preferred. Sussex Co. 201-786-5508

Grey Arab Gelding, coming 3, 4 whites, pretty curious, friendly, needs a job. Dorsett Farms, Columbus, NJ. 609-298-8381

Scotch Highland bull, red, yearling, registered, champion bloodline, good disposition, use for cross breeding and easy calving. Purcellville, VA. 703-338-3608

Cooking kitchen stoves. Also room heaters, 20 sorted types of stoves to check in. William Martin, RD1, Box 387, New Holland, Pa. 17557.

1976 Chev. C-20 pickup, 53,000 miles, 2 new fenders, good tires, new inspection. Berks, E. Petersheim. 215-689-5554

50 units Ace; 50 units Andy; 70 units Milnor. Purchased from Atlantic and stored by owner. Baltimore Co., MD. 301-239-7326

Alfalfa Grass Hay, no rain, 2nd & 3rd cutting, \$120. per ton. Berks Co. 717-933-4760

3 yr. old registered Sorrel mare. Isaiah S. Ebersol, 75 Hess Rd., Leola, Pa. 17540. Lanc. Co.

Acme Supreme juicer, like new, \$50.; 300' dry oak lumber; Old iron fence, 18" high. Lanc. Co. 215-484-2325

Parts from 1965 Newport Chrysler, 1963 Biscayne, 1964 Nova Chevrolet. Col Co. 717-759-1506 after 4 p.m.

Bull, Polled Hereford, Grand Son of Justa Banner, Spring Bottom Farm Cow, tall, long. Mont. Co. 215-584-6975

Woods scraper blade, 3 pt., 7', heavy duty, rating up to 100 h.p., many positions, \$375. Lanc. Co. 717-626-5438

AKC Collie puppies and 6 month old Collie male. Also Collie and Pomeranian Stud Service. Lanc. Co. 717-733-8770

4 yr. old horse, 1/2 saddle bred, 1/2 standardbred, green broke. Lanc. Co. 717-733-1032

NH 269 hayliner baler, used 1 farm, field ready, \$950. Bedford Co. 717-784-5493

1980 Olds Custom Cruiser station wagon, wreck front, no engine parts. OBO For All. Huntingdon Co 814 447-3713

40' curb forms, \$450; 6' steel shear, \$500.; 8' aluminum brake, \$500.; 2500 lb. scale, \$800 Steel desk, \$45. Dauphin Co. 717-286-5306

Girton bulk tank, 400 gallon D2, good condition, \$400. Emanuel S. Esh, 4240 Redwell Dr., Kinzer, Pa. 17535. Lanc. Co.

350 Chevy engine w/4 bolt main, \$200. 717-264-8814

AKC Labrador Retriever pups, males & females, both parents on premises, shots and wormed. Wyoming Co 717-833-4909

South Bend metal lathe, 9" swing, 28" between centers, quick change, ex. cond., \$695. Berks Co. 215-856-7856

350 diesel motor from 1980 Chevrolet; 1200 David Brown tractor Make Offer. Chester Co. 215-942-2657

1973 Ford F350 cattle truck, 11,000 GVW w/Hostetler 11' body, \$2,800. Chester Co. 215-255-4536

(15) vaccinated, Grade, well bred & grown Holstein heifers, 6-8 months old. Reasonably Priced. Dutchess Co. NY 518-789-3066 after 8 p.m.

JD 210 disc 14'-3" blades, 18" on front, 19" on rear, excellent condition, \$1,800. Lanc Co. 717-354-5092

60 acre farm, in good condition. Dauphin Co. Price Reduced. Pig & Dairy. 814-234-9069 after 6 p.m.

WD AC w/loader, \$700.; 4 ton plywood feed bin on legs; 10x48 house trailer for storage or animals, \$200. Lanc. 717-684-5352

Original 3 pt. hitch, complete w/mounting brackets, excellent shape, for Massey Harris 33, 44, 333, 444, \$250. OBO. Lanc. Co. 215-445-5252

5 front end tractor weights w/mounting bracket, for Farmall 504, \$300.; Springfield 30.06 w/scope and sling, \$200. Berks Co. 215-562-7949

Purebred German Shepherd pups, born Nov. 3. John K. Fisher, 30A. N. Hollander Rd., Gordonville, Pa. 17529. 1st farm off 340 near Intercourse.

Power units, 1 Wisconsin w/clutch, 1 JD w/clutch reduction. Berks Co 215-779-9089

Vacuum dumping station, complete w/washer dryer filters, \$300. Berks Co 215-926-4722

Brockway truck parts, 148W, 154W, 260T, Pre. 1962 excellent sheet metal, good restorable trucks. Bill Fletcher, Trumansburg, NY. 607-387-5838 Weekdays.

'80 Chevy El Camino Conquista, red/white fiberglass top, PS, PB, air, tilt wheel, no rust, no dents, no scratches, garage kept, \$4,500. or Make Offer. 717-653-1714

Heavy black standardbred horse, safe for old man, works single, double anywhere. Allen Z. Hoover, Ridge Ave., Box 879, Ephrata, Pa. 17522.

Manure spreader; Grain drill; Cultivators for Cub, IH 140, A-V. Also plow, side dressers, disk; Poultry equip., Cole planters; Milk cans; 4 1/2' mower. Salem. 609-358-8625

IH Utility 350 farm tractor, 4 cyl., dsl., good condition, 2 pt., 3 pt. hitch, live PTO, 2 dual remote hyd. Trioga Co 717-376-2264

1983 Dodge 4 door Diplomat, heavy duty, special, good condition, \$2,500. Lebanon Co. L.B. Hess 717-273-6018 after 6 p.m.

AC 1977 540 loader, 4WD, articulating, detachable backhoe, canopy, 4 cylinder gas engine, \$12,900. Will consider trades. Arkport, NY. 607-295-7333

Owners manuals: MF to 35, 65 diesel, 130, 150, 175, 180, Ferguson 40, \$10.00 each 716-554-6479

Hough 4WD loader, model HU, runs, diesel engine needs repair, \$1,000. Shen. Co., VA. 703-465-8376

Border Collie pups, reg. working parents, ready Dec. 18. Bedford Co. 814-766-3449

7 yr. old Saddlebred, anyone can drive, \$700.; Reg. 4 yr. old Belgian Stallion, broke, \$975.; 6 yr. old Belgian Gelding, \$700. Christian L. Beiler, 68 S. Weavertown Rd., Ronks, Pa. 17572.

(1) Boar Hog, Service Age, \$175. David Lantz, 416 Musser School Rd., Gordonville, Pa 17529.

Model 729A Uni Sheller, \$2,000.; 740 fast tach feeder housing, \$500.; Union Co., Pa. 717-524-9292

Oliver 2x14 trailer plow, wheel trip cover boards, coulters, new shares, shins, field ready, \$250. York Co. 717-235-2032

GMC 10 wheeler, 18' Omaha body & hoist, holds 600 bu., new 427 w/5,000 miles, 10 spd. Roadranger, excellent condition. Salem Co., NJ. 609-691-7863

IH 706 310 dis., WF, dual tires, dual hyd. Burlington Co., NJ. 609-261-3359

Spicer 4x4 w/linkage. Also IH Loadstar parts, engine, trans., rad., springs, axles. Augusta Co., VA. 703-363-5152 evenings.

Water softner, like new, electric. Make Offer Daniel Fisher, RD2, Box 2426, East Earl, Pa. 17519. Chester Co.

Tractor mounted log splitter, 24" capacity, run by PTO or hydraulics. Hunterdon Co., NJ. 201-439-2304

Ford truck, cab over, 700 series, 26,000 GVW w/16' flat bed, good condition. Cumb. Co. 717-776-5870

NI 206 ground driven manure spreader, good condition, \$895. Can Deliver. Lanc. Co 717-548-2559

Caterpillar Road Grader, model 212 pony motor start, runs & operates, \$2,100. Cecil Co., Md. 301-287-5277

Reg. 3 yr. old T.W. Filly, chestnut, Ish Suns Delight Merry Boy, some ground work, a real beauty, \$750 Fred Co. 301-695-5781

1971 Super Beetle, rebuilt engine, low mileage, semi auto. shift, dependable, cream color, excellent upholstery, \$1,500. Firm. Lanc. Co 717-394-7798.

1977 Int. diesel, 1750 series, 5+2, set up for 5th wheel trailer or would make excellent dump truck. NY State. 607-563-1994

Antique spring wagon, good condition; 6 yr. old pony, 13.2 hands, mare, pinto, quite well, broke single foots. Franklin Co. 717-328-9259 after 5 p.m.

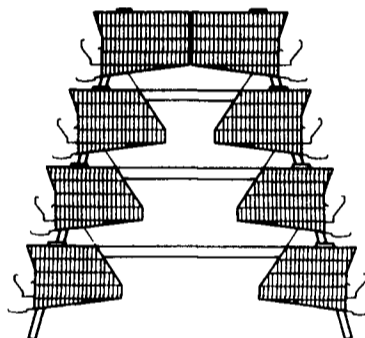
PROFIT-TIER® 20

Layer cage system

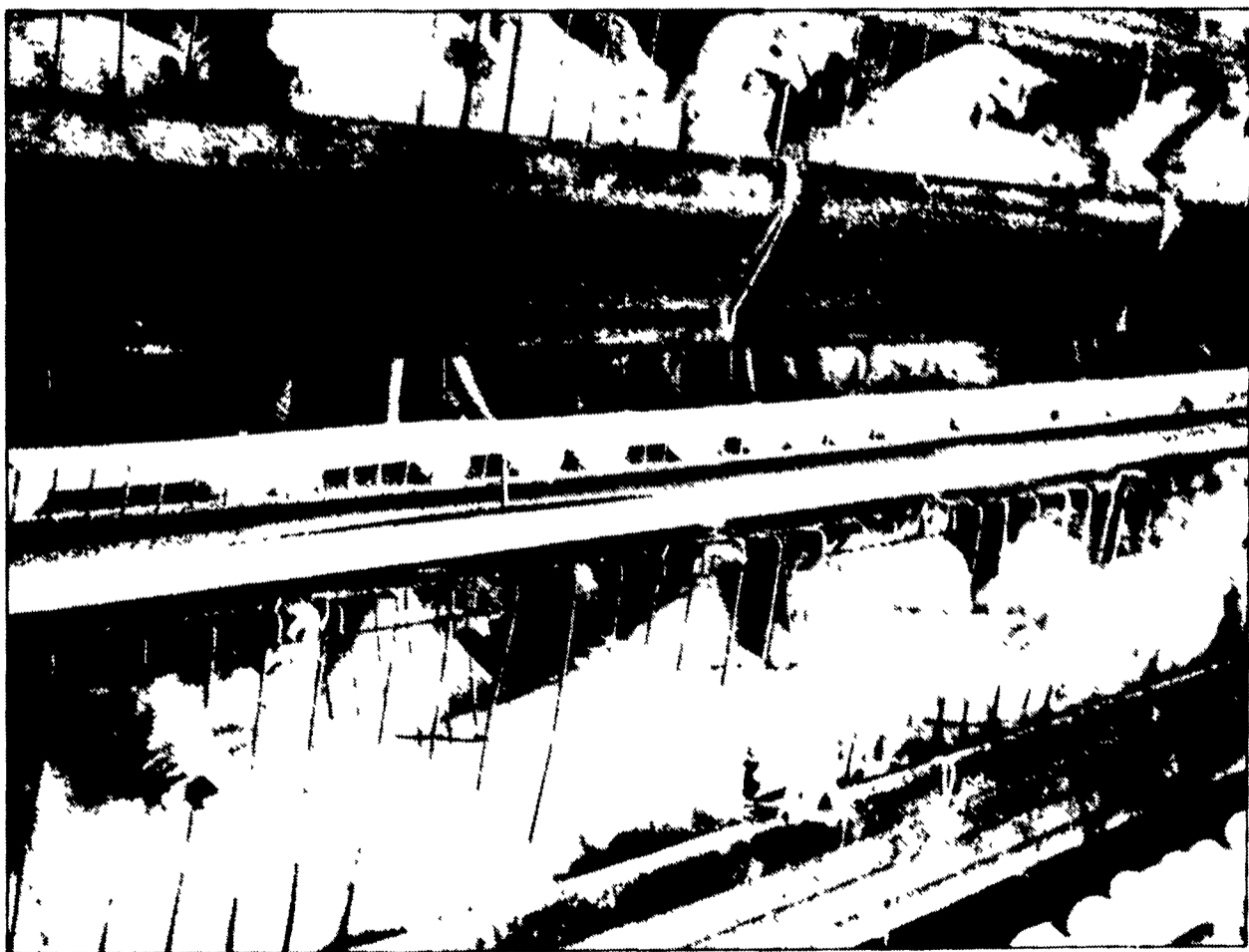
Big Dutchman has taken its low profile cage and condensed the overall section width to produce the Profit-Tier 20 system. This four tier 84 inch wide system is designed to maximize density in new or existing houses.

The Profit-tier 20 features the Champion Feeding System with in-line feed hoppers with belt or gear motor drive.

Rigid leg frames with feed trough supports provide suspension and maintain proper alignment for the system.



Big Dutchman.



H **HERSHEY EQUIPMENT COMPANY, INC.**
Designers of Quality Systems for Poultry, Swine and Grain Handling

SYCAMORE IND. PARK
255 PLANE TREE DRIVE
LANCASTER, PA 17603
(717) 393-5807

Route 30 West at the Centerville Exit.

EXPERT REPAIRS

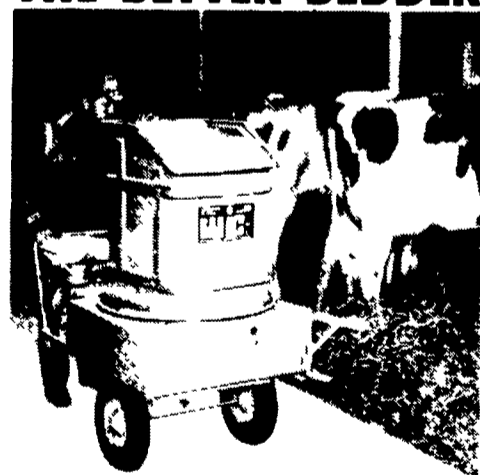
- GENERATORS
- STARTERS
- ALTERNATORS



PEQUEA BATTERIES
Ronks, PA

WIC

THE BETTER BEDDER



- QUICK CHANGE KNIVES
No Bolts
- STRING PROOF ROTOR
No Wrapping
- 3 SIDED BLADES
6 Cutting Edges

TRADES ACCEPTED - LEASING AVAILABLE

Call Today Toll Free
Or See Your Local Dealer

US AGRI-SYSTEMS

SPECIALIZED FARM EQUIPMENT

OXFORD, PA 19363

(800) 222-2948 (301) 398-2948

MANURE MANAGEMENT SPECIALISTS